

STATE OF ILLINOIS
DEPARTMENT OF TRANSPORTATION

| | | | | | |
|-----------------------|----------|------------------|--------------|-----------|-----------------------------|
| ROUTE NO. | SECTION | COUNTY | TOTAL SHEETS | SHEET NO. | SHEET SA- 4 OF 14 SHEETS |
| - | - | KANE | 545 | 291 | |
| FED. ROAD DIST. NO. 7 | ILLINOIS | FED. AID PROJECT | | | |

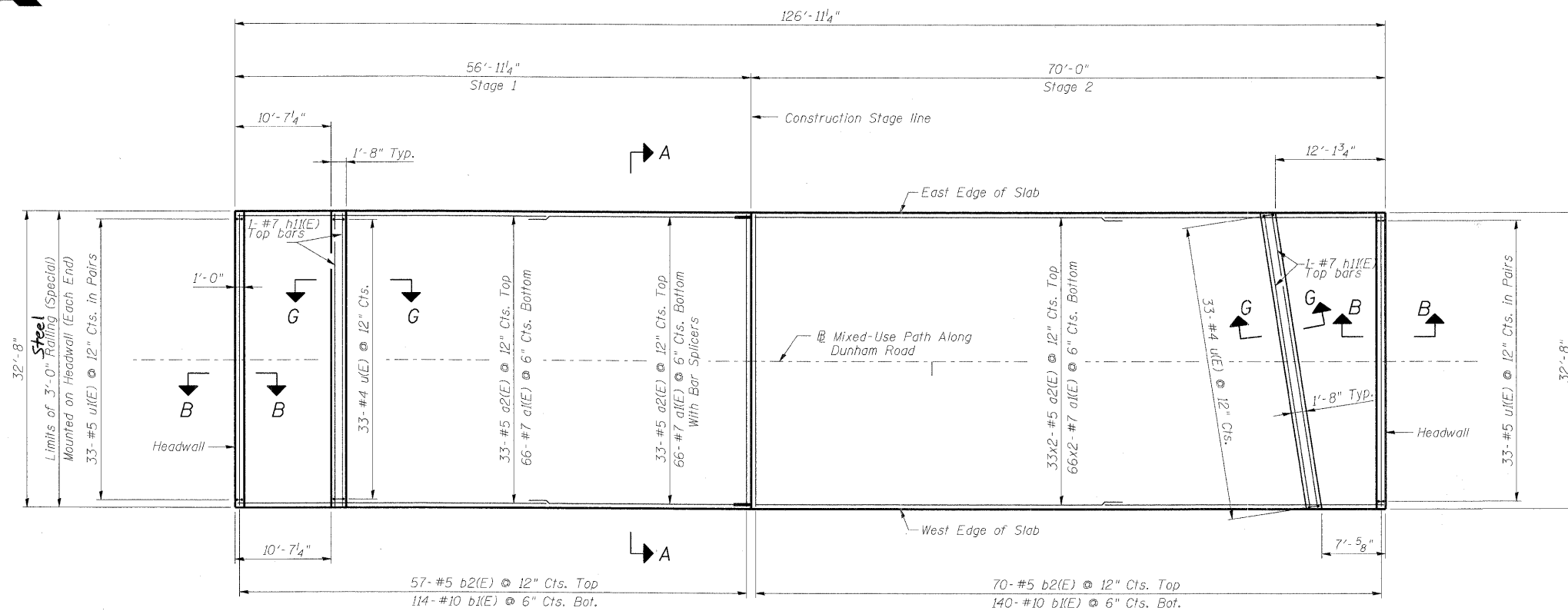
Contract #63074

BILL OF MATERIAL
(Stage 1 Construction)

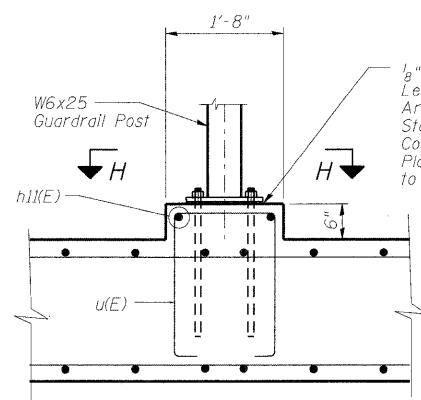
| Bar | No. | Size | Length | Shape |
|----------------------------------|-----|---------|--------|-------|
| a1(E) | 132 | #7 | 30'-3" | — |
| a2(E) | 66 | #5 | 29'-6" | — |
| b1(E) | 114 | #10 | 32'-4" | — |
| b2(E) | 57 | #5 | 32'-4" | — |
| d3(E) | 8 | #6 | 32'-4" | — |
| h1(E) | 2 | #7 | 32'-4" | — |
| u(E) | 33 | #4 | 6'-4" | □ |
| u1(E) | 66 | #5 | 8'-8" | □ |
| Concrete Structures | | Cu. Yd. | 142.1 | |
| Reinforcement Bars, Epoxy Coated | | Pound | 29,240 | |
| Bar Splicers | | Each | 99 | |

BILL OF MATERIAL
(Stage 2 Construction)

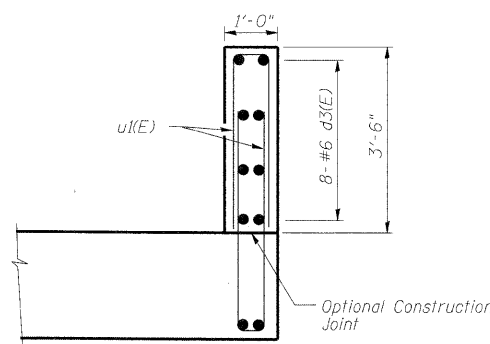
| Bar | No. | Size | Length | Shape |
|----------------------------------|-----|---------|--------|-------|
| a1(E) | 132 | #7 | 36'-9" | — |
| a2(E) | 66 | #5 | 36'-0" | — |
| b1(E) | 140 | #10 | 32'-4" | — |
| b2(E) | 70 | #5 | 32'-4" | — |
| d3(E) | 8 | #6 | 32'-4" | — |
| h1(E) | 2 | #7 | 32'-4" | — |
| u(E) | 33 | #4 | 6'-4" | □ |
| u1(E) | 66 | #5 | 8'-8" | □ |
| Concrete Structures | | Cu. Yd. | 173.7 | |
| Reinforcement Bars, Epoxy Coated | | Pound | 35,490 | |



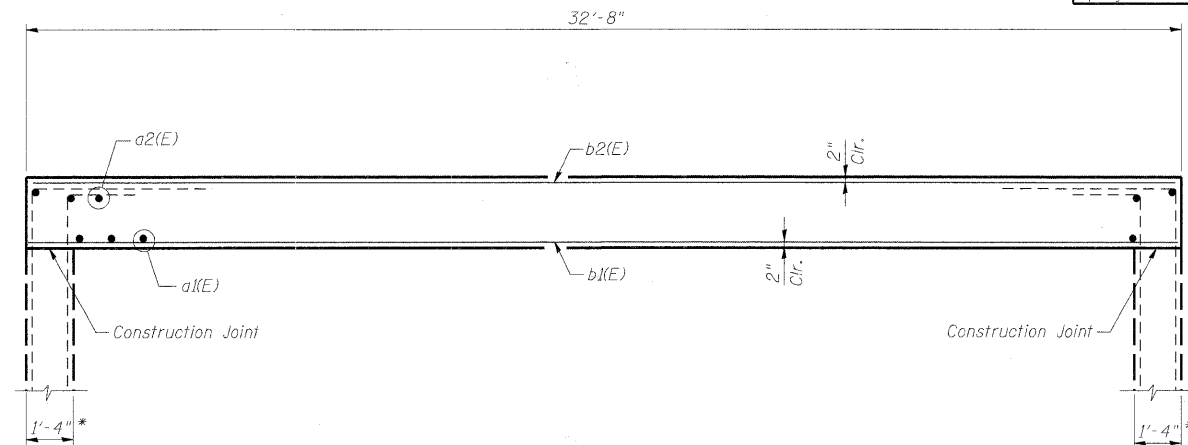
PLAN



SECTION G-G

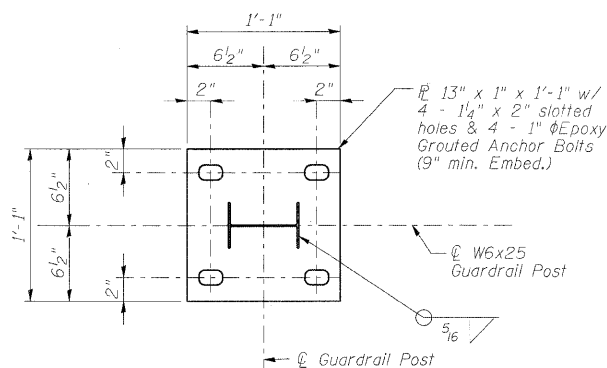


SECTION B-B



SECTION A-A

* Dimension does not include additional thickness required for architectural treatment



SECTION H-H

| | |
|----------|---------|
| DESIGNED | AAY |
| CHECKED | AJK |
| DRAWN | VH |
| CHECKED | HMA/DMC |

benesch
alfred benesch & company
Engineers • Surveyors • Planners
205 North Michigan Avenue, Suite 2400
Chicago, Illinois 60601
312-965-0450
Job # 3944

**TOP SLAB REINFORCEMENT
MULTI-USE PATH UNDER
IL 25/STEARNS ROAD
F.A.P. 360 - SEC. 06-00214-15-BR
KANE COUNTY
STATION 916+09.93
STRUCTURE NO. 045-3173**