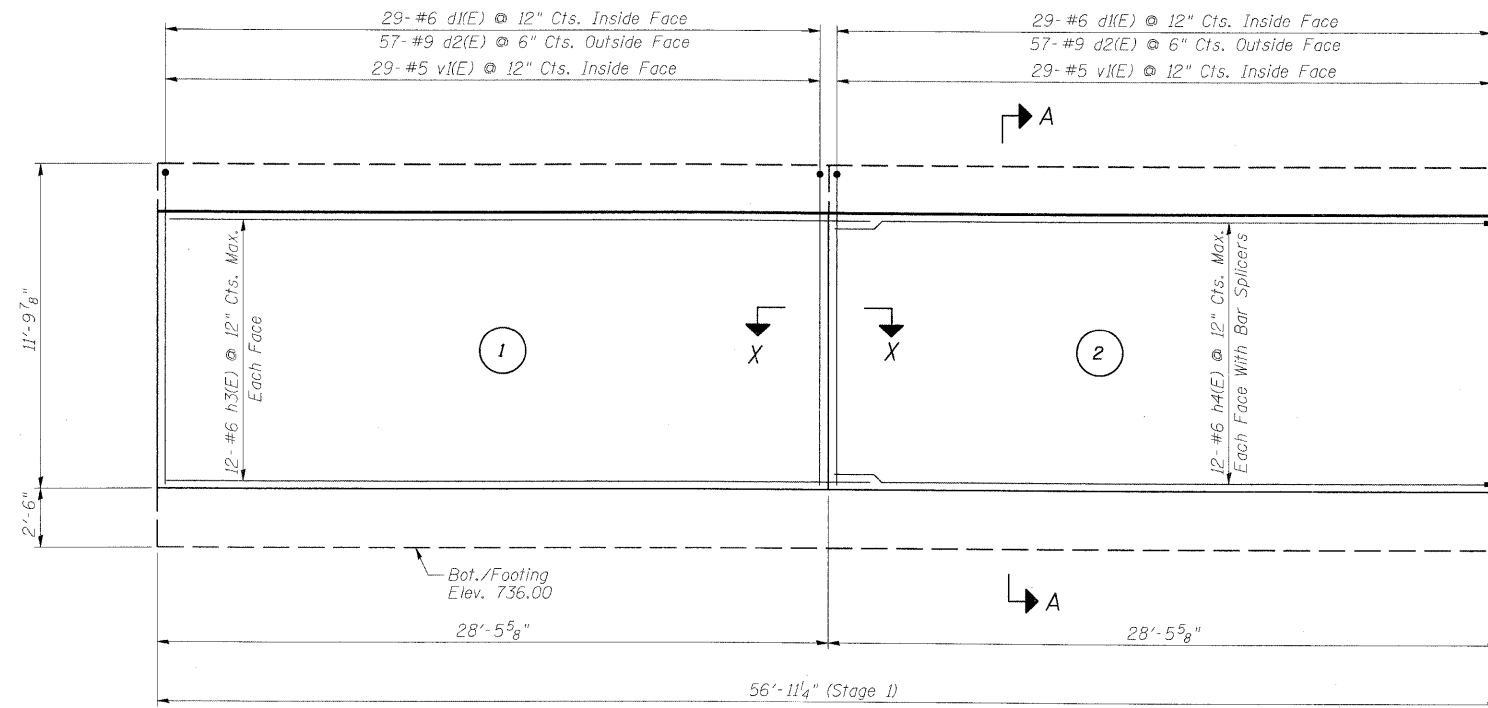


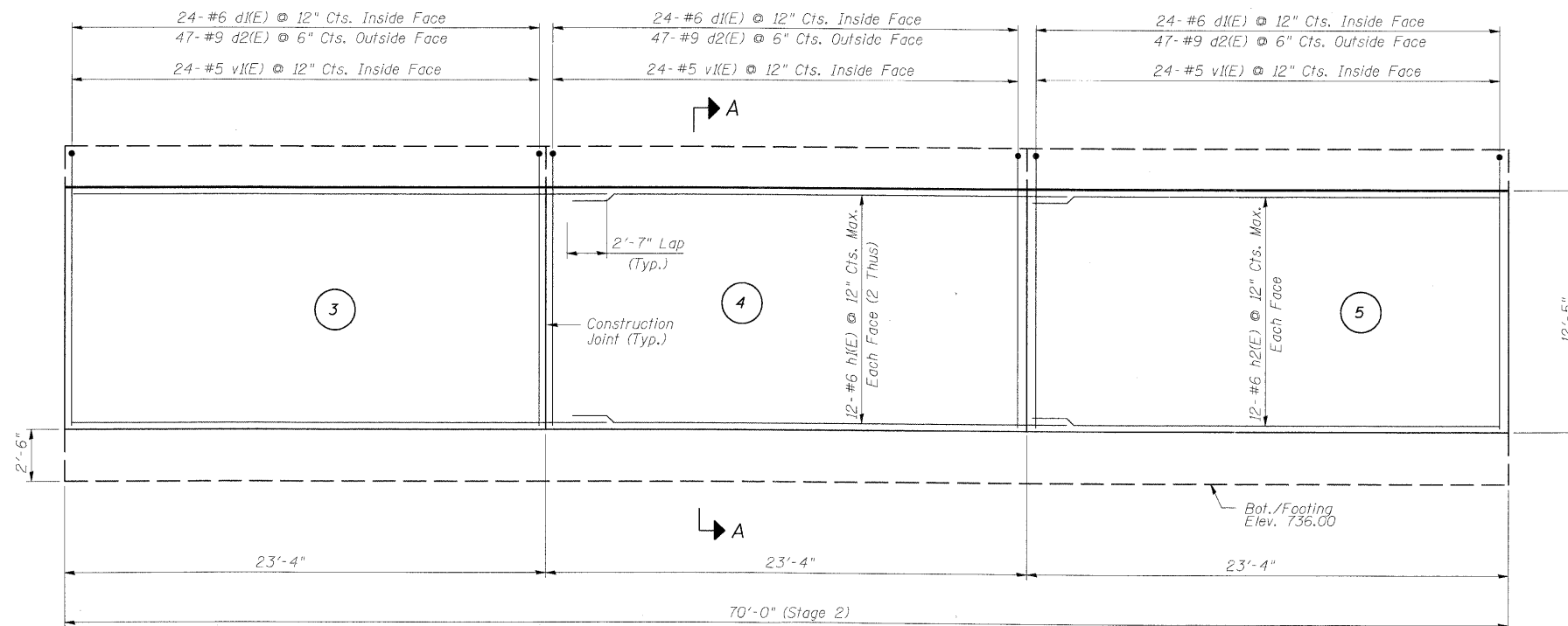
STATE OF ILLINOIS
DEPARTMENT OF TRANSPORTATION

ROUTE NO.	SECTION	COUNTY	TOTAL SHEETS	SHEET NO.	SHEET SA- 7 OF 14 SHEETS
-	-	KANE	545	294	
FED. ROAD DIST. NO. 7		ILLINOIS	FED. AID PROJECT		

Contract #63074



EAST WALL ELEVATION
(West Wall Elevation Similar)



EAST WALL ELEVATION
(West Wall Elevation Similar)

DESIGNED	AAY
CHECKED	AJK
DRAWN	VH
CHECKED	HMA/DMC

BILL OF MATERIAL

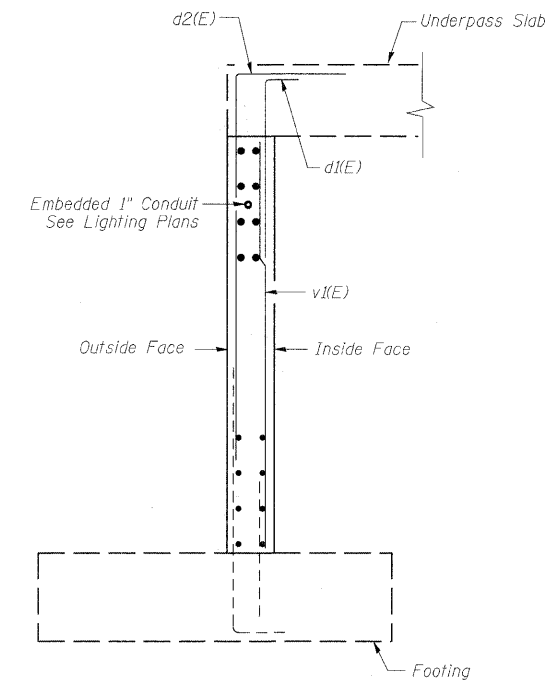
(Stage 1 Construction - East & West Walls)

Bar	No.	Size	Length	Shape
d1(E)	116	#6	7'-0"	┌
d2(E)	228	#9	18'-6"	┌
h3(E)	48	#6	31'-0"	—
h4(E)	48	#6	28'-2"	—
v1(E)	116	#5	11'-6"	—
Concrete Structures			Cu. Yd.	67.2
Reinforcement Bars, Epoxy Coated			Pound	21,220
Bar Splicers			Each	48

BILL OF MATERIAL

(Stage 2 Construction - East & West Walls)

Bar	No.	Size	Length	Shape
d1(E)	144	#6	7'-0"	┌
d2(E)	282	#9	18'-6"	┌
h1(E)	96	#6	25'-11"	—
h2(E)	48	#6	23'-0"	—
v1(E)	144	#5	11'-6"	—
Concrete Structures			Cu. Yd.	84.7
Reinforcement Bars, Epoxy Coated			Pound	26,380

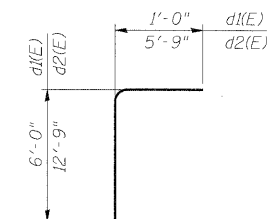


SECTION A-A

Notes:

1. Stations and offsets are measured with respect to Mixed-Use Path along IL 25/Dunham Road.
2. (1) Denotes panel number.
3. For Section X-X see sheet SA-5.

BARS d1(E) & d2(E)



WALL REINFORCEMENT
MULTI-USE PATH UNDER
IL 25/STEARNS ROAD
F.A.P. 360 - SEC. 06-00214-15-BR
KANE COUNTY
STATION 916+09.93
STRUCTURE NO. 045-3173

benesch alfred benesch & company
Engineers • Surveyors • Planners
205 North Michigan Avenue, Suite 2400
Chicago, Illinois 60601
312-566-0450
Job # 3944