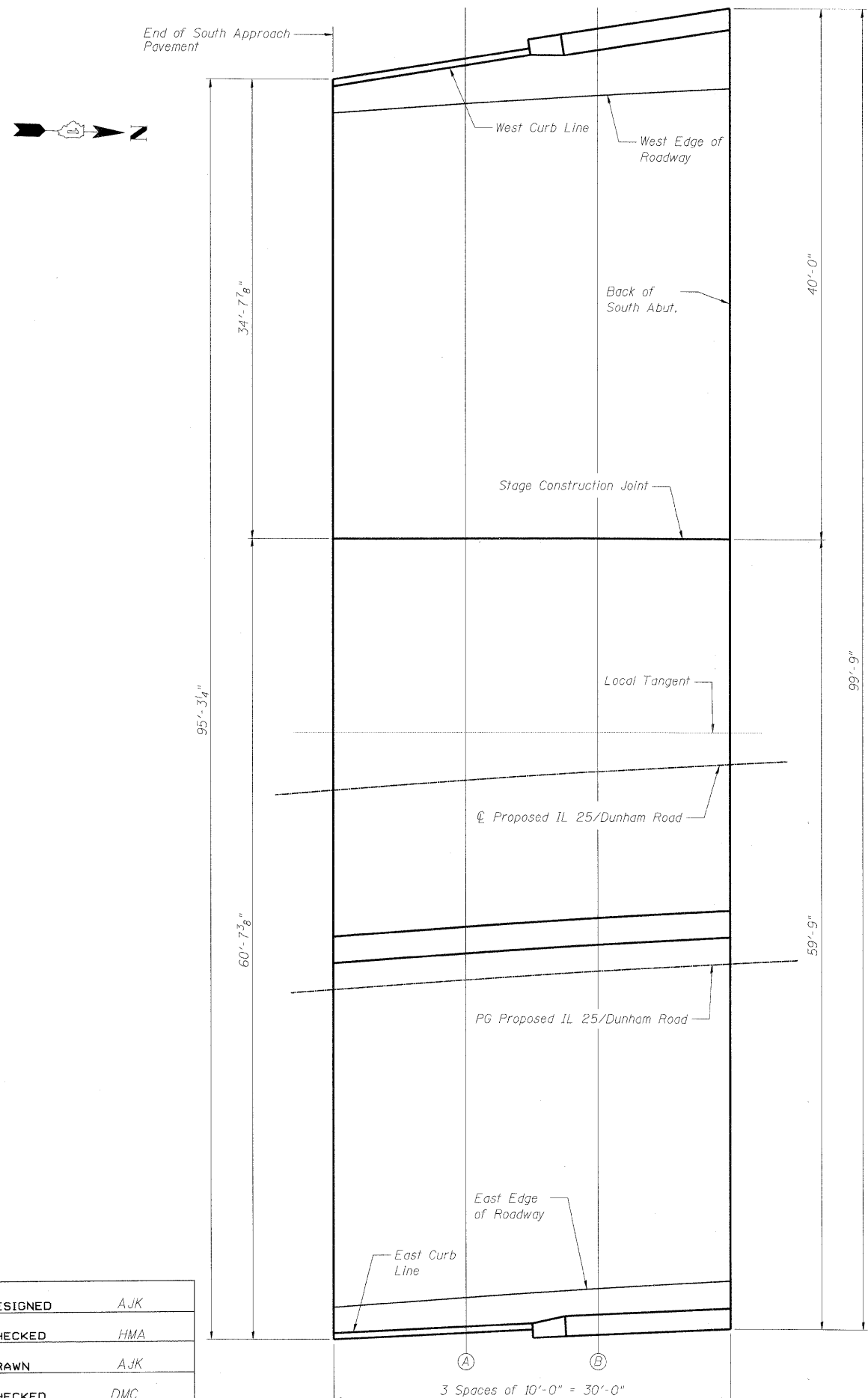


STATE OF ILLINOIS
DEPARTMENT OF TRANSPORTATION

ROUTE NO.	SECTION	COUNTY	TOTAL SHEETS	SHEET NO.
-	-	KANE	545	323
FED. ROAD DIST. NO. 7		ILLINOIS	FED. AID PROJECT	

SHEET SD- 8
OF 34 SHEETS

Contract # 63074



DESIGNED	AJK
CHECKED	HMA
DRAWN	AJK
CHECKED	DMC

PLAN

WEST CURB LINE

Location	Station	Offset	Theoretical Grade Elevations
End South Approach Pavement	275+39.71	-53.00	753.66
A	275+49.46	-53.87	753.70
B	275+59.17	-54.37	753.74
Back of South Abutment	275+68.90	-55.37	753.80

PG IL 25/DUNHAM ROAD

Location	Station	Offset	Theoretical Grade Elevations
End South Approach Pavement	275+34.73	15.00	752.29
A	275+44.85	15.00	752.31
B	275+54.97	15.00	752.34
Back of South Abutment	275+65.09	15.00	752.37

WEST EDGE OF ROADWAY

Location	Station	Offset	Theoretical Grade Elevations
End South Approach Pavement	275+39.57	-51.00	753.62
A	275+49.28	-51.00	753.64
B	275+58.98	-51.00	753.67
Back of South Abutment	275+68.67	-51.00	753.71

EAST EDGE OF ROADWAY

Location	Station	Offset	Theoretical Grade Elevations
End South Approach Pavement	275+32.86	39.00	751.81
A	275+43.15	39.00	751.83
B	275+53.43	39.00	751.85
Back of South Abutment	275+63.71	39.00	751.89

STAGE CONSTRUCTION JOINT

Location	Station	Offset	Theoretical Grade Elevations
End South Approach Pavement	275+37.27	-18.94	752.97
A	275+47.13	-18.24	752.98
B	275+56.99	-17.59	753.00
Back of South Abutment	275+66.87	-17.01	753.02

EAST CURB LINE

Location	Station	Offset	Theoretical Grade Elevations
End South Approach Pavement	275+32.71	41.00	751.77
A	275+42.99	41.23	751.78
B	275+53.30	40.97	751.81
Back of South Abutment	275+63.59	41.07	751.85

Notes:
1. For approach slab details, see sheets SD-29 and SD-30.

TOP OF SOUTH APPROACH
SLAB ELEVATIONS
IL 25/DUNHAM ROAD OVER THE
EAST BRANCH OF BREWSTER CREEK
F.A.P. 360 - SEC. 06-00214-15-BR
KANE COUNTY
STATION 276+36.96
STRUCTURE NO. 045-2032

benesch
alfred benesch & company
Engineers • Surveyors • Planners
205 North Michigan Avenue, Suite 2400
Chicago, Illinois 60601
312-565-0450
Job # 3944

x:\3900s\3944\engineer\ing_documents\1125-dunham_over_brewster_sn045-2032(nbl_sn045-2034(sb)\final\0452032-63074-008-asei.dgn 11:21:01 AM 3/30/2009