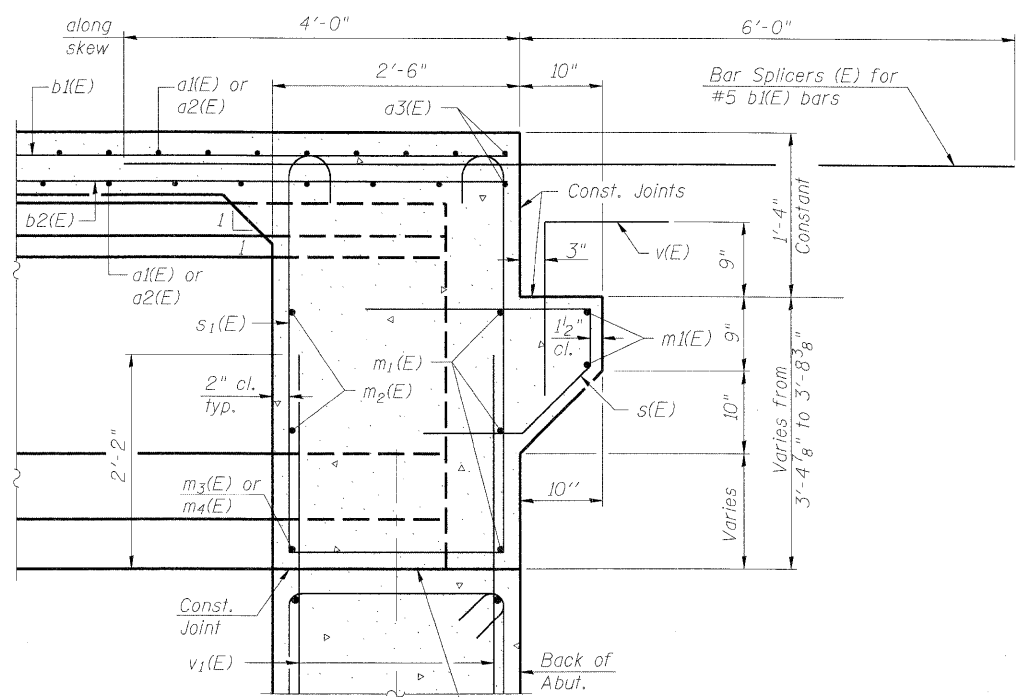


STATE OF ILLINOIS
DEPARTMENT OF TRANSPORTATION

ROUTE NO.	SECTION	COUNTY	TOTAL SHEETS	SHEET NO.
-	-	KANE	545	358
FED. RD. DIST. NO. 7	ILLINOIS	FED. AID PROJECT		

SHEET SS- 9
OF 22 SHEETS

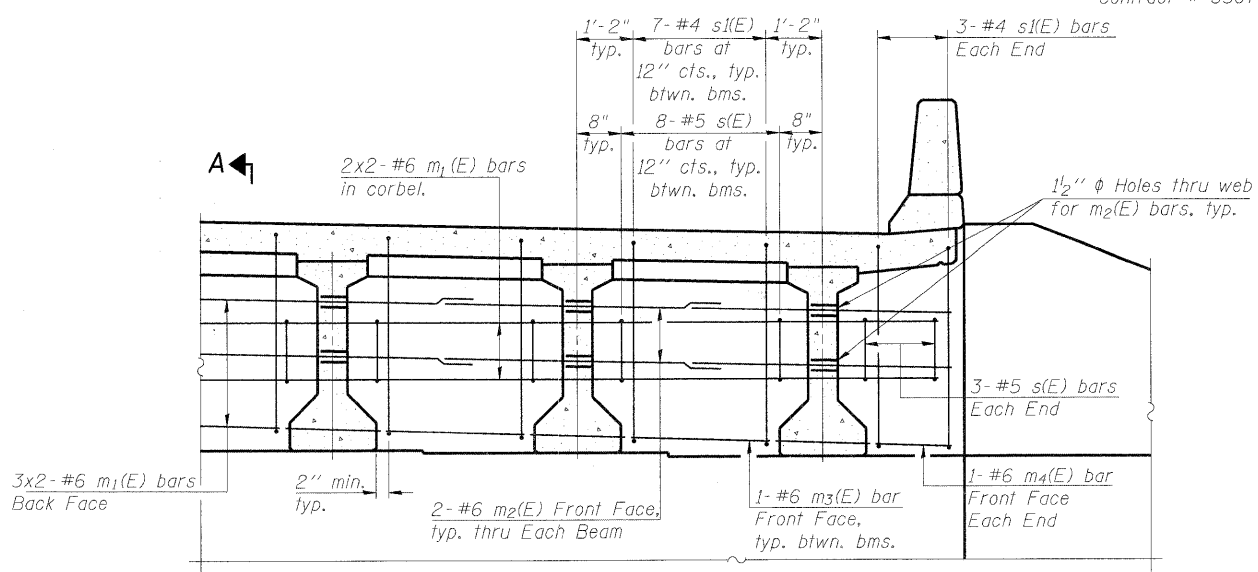
Contract # 63074



Beam ends shall be set on an initial 1/2" min. grout (2:1 sand and portland cement, very dry mix) to provide full bearing. Any excess grout squeezed out from under the beam shall be removed. Cost included with Concrete Structures.

SECTION A-A

Dimensions at right angles to abutment, except as shown.



DIAPHRAGM ELEVATION AT ABUTMENT

MIN. BAR LAP

#6 bar = 2'-9"

- Notes:
1. Reinforcement bars in diaphragm are billed with superstructure on sheet SS-10
 2. Concrete in diaphragm is included with Concrete Superstructure on sheet SS-10.
 3. For details of bars s(E) and s1(E) see sheet SS-10
 4. The s(E) and s1(E) bars shall be placed parallel to the beams. Spacing for these bars shall be at right angles to the beams.

DESIGNED	AJK
CHECKED	AAY
DRAWN	AYR
CHECKED	HMA/DMC

benesch
alfred benesch & company
Engineers • Surveyors • Planners
205 North Michigan Avenue, Suite 2400
Chicago, Illinois 60601
312-565-0450
Job # 3944

DIAPHRAGM SECTION AND ELEVATION
IL 25/STEARNS ROAD OVER THE
EAST BRANCH OF BREWSTER CREEK
F.A.P. 2503 - SEC. 06-00214-15-BR
KANE COUNTY
STATION 138+59.20
STRUCTURE NO. 045-2035

x:\3900s\3944\engineering_documents\IL25-Stearns-over-Brewster-045-2035(WB)\Find\0452035-63074-009-dkd1.dgn 3/30/2009 11:22:50 AM