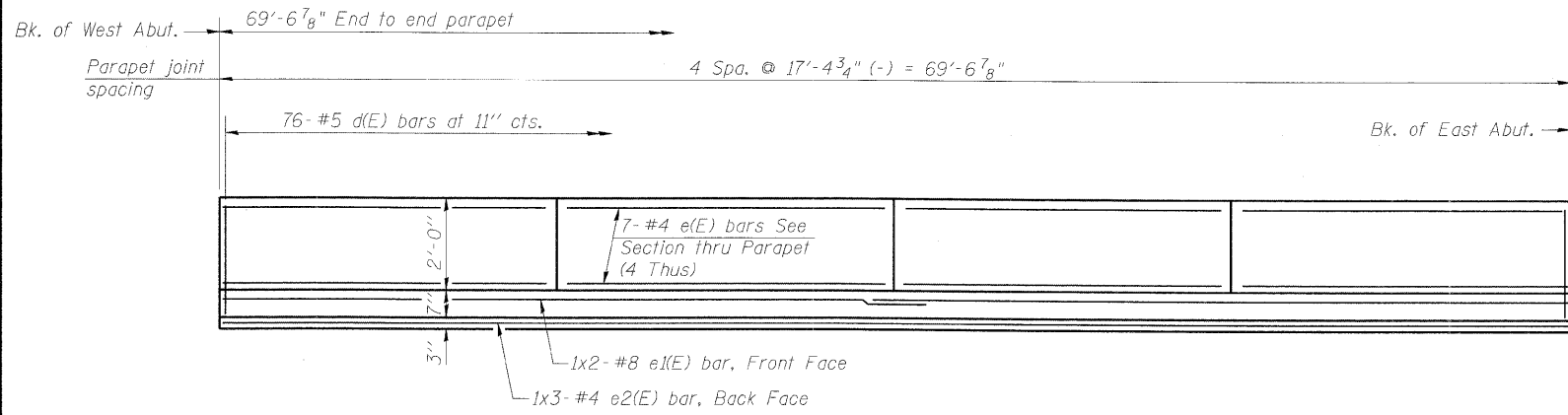


STATE OF ILLINOIS  
DEPARTMENT OF TRANSPORTATION

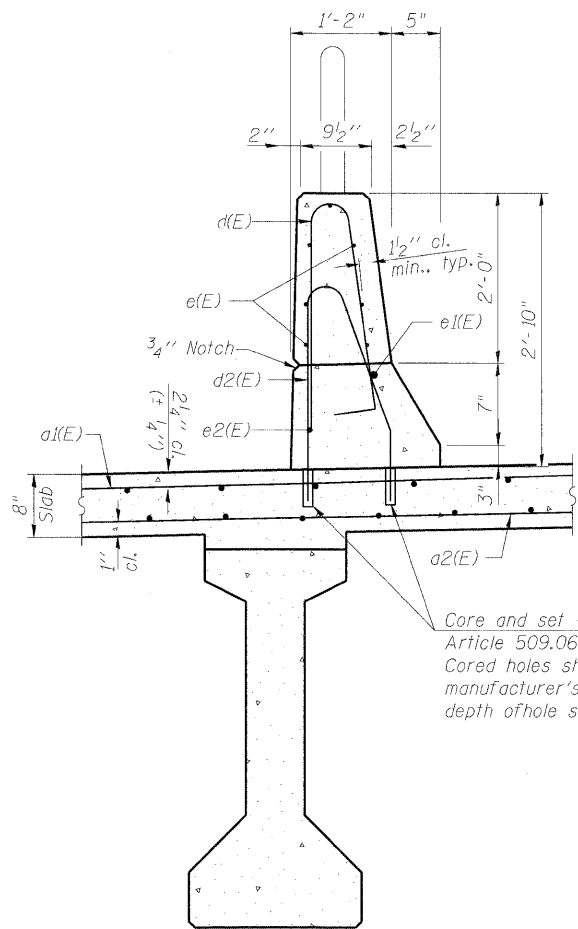
ROUTE NO.	SECTION	COUNTY	TOTAL SHEETS	SHEET NO.
		KANE	545	359
FED. ROAD DIST. NO. 7		ILLINOIS FED. AID PROJECT		

SHEET SS- 10  
OF 22 SHEETS

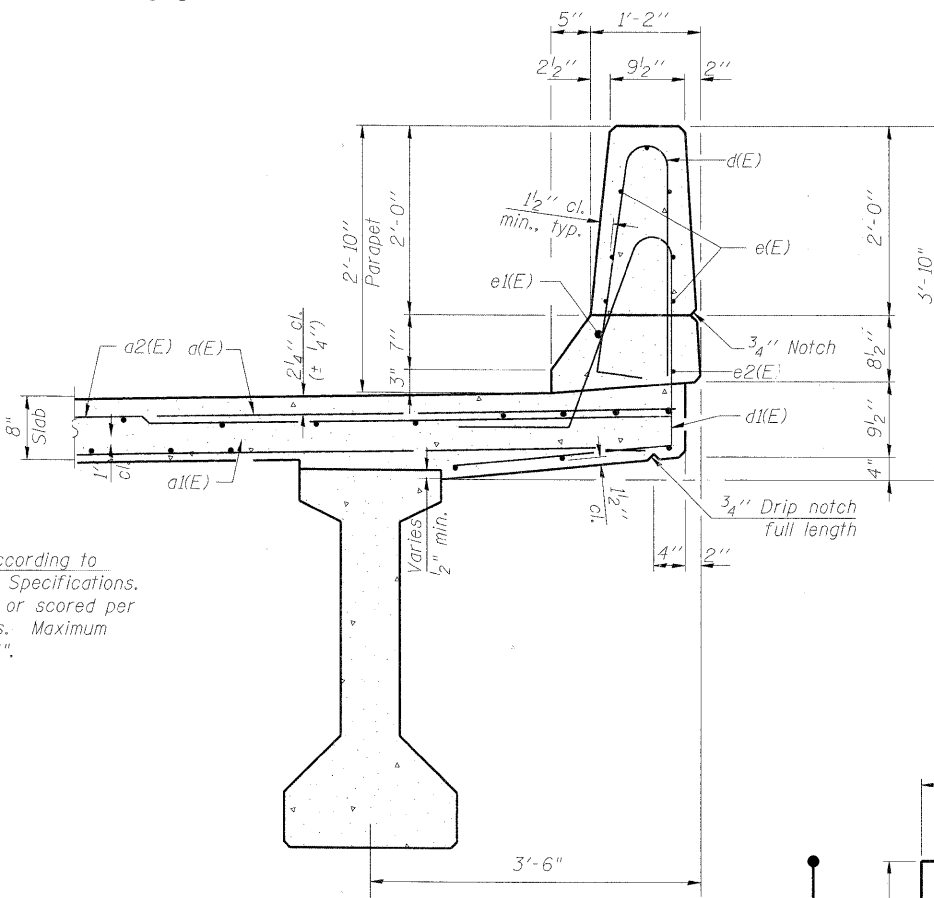


**INSIDE ELEVATION OF PARAPET**

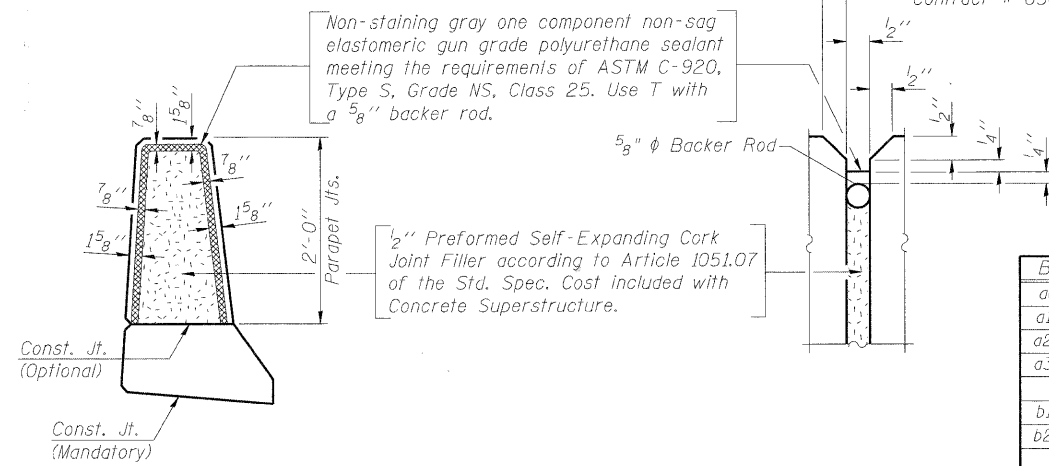
(Parapet)  
#4 bar = 1'-4"  
#8 bar = 3'-5"



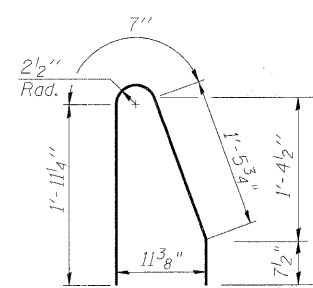
**SECTION THRU NORTH PARAPET**



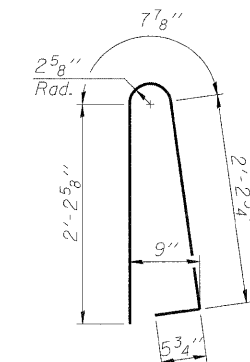
**SECTION THRU SOUTH PARAPET**



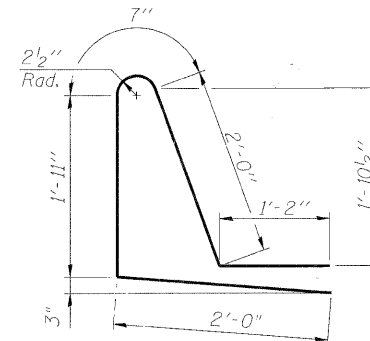
**PARAPET JOINT DETAILS**



**BAR d2(E)**

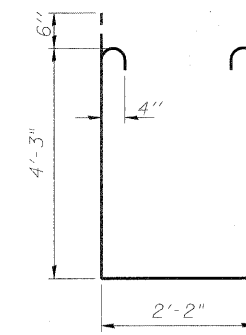


**BAR d(E)**

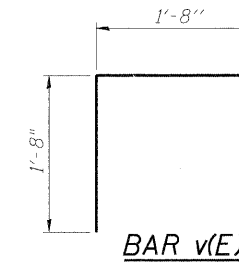


**BAR s(E)**

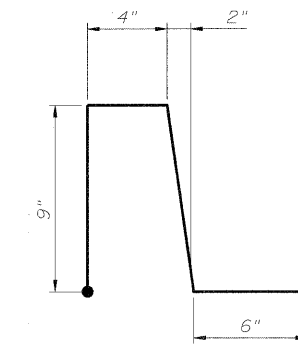
**BAR d1(E)**



**BAR s1(E)**



**BAR v(E)**



**BAR d3(E)**

**SUPERSTRUCTURE  
BILL OF MATERIAL**

Bar	No.	Size	Length	Shape
a(E)	302	#6	6'-0"	—
a1(E)	243	#5	27'-6"	—
a2(E)	243	#5	32'-0"	—
a3(E)	8	#6	31'-0"	—
b1(E)	122	#5	35'-9"	—
b2(E)	165	#5	24'-6"	—
d(E)	152	#5	5'-7"	—
d1(E)	76	#5	7'-8"	—
d2(E)	76	#5	4'-7 1/2"	—
d3(E)	70	#5	2'-10"	—
e(E)	56	#4	17'-0"	—
e1(E)	4	#8	36'-6"	—
e2(E)	6	#4	24'-0"	—
m1(E)	20	#6	30'-9"	—
m2(E)	28	#6	10'-6"	—
m3(E)	12	#6	6'-9"	—
m4(E)	4	#6	2'-6"	—
s(E)	108	#5	4'-7"	—
s1(E)	96	#4	11'-8"	—
v(E)	112	#5	3'-4"	—
Reinforcement Bars, Epoxy Coated			Lbs.	33,290
Concrete Superstructure			Cu. Yds.	164.8

Bars indicated thus 1x2-#5 etc. indicates 1 line of bars with 2 lengths per line.

Note:  
1. For conduit attached to structure details, see Traffic Signal Interconnect Plan.

**PARAPET ELEVATION AND DETAILS  
IL 25/STEARNS ROAD OVER THE  
EAST BRANCH OF BREWSTER CREEK  
F.A.P. 2503 - SEC. 06-00214-15-BR  
KANE COUNTY  
STATION 138+59.20  
STRUCTURE NO. 045-2035**

DESIGNED	AJK
CHECKED	AAY
DRAWN	AYR
CHECKED	HMA/DMC

**benesch**  
alfred benesch & company  
Engineers • Surveyors • Planners  
205 North Michigan Avenue, Suite 2400  
Chicago, Illinois 60601  
312-565-0450  
Job # 3944

x:\3900s\3944\engineering\_documents\IL25-Stearns\_road\_Brewster\_SNO45-2035(WB)\Final\045-2035-63074-010-pp1.dgn 11:22:53 AM 3/30/2009