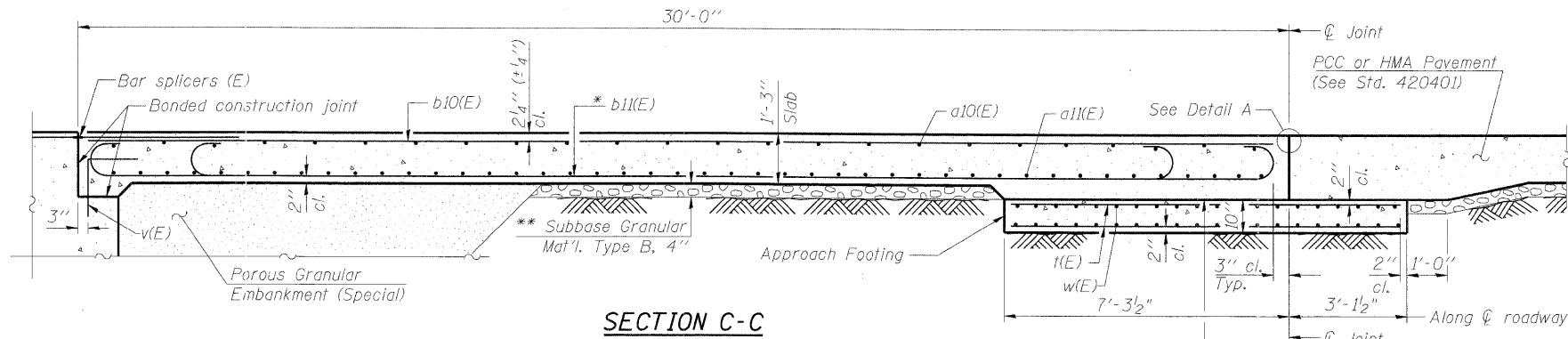


STATE OF ILLINOIS
DEPARTMENT OF TRANSPORTATION

ROUTE NO.	SECTION	COUNTY	TOTAL SHEETS	SHEET NO.
-	-	KANE	545	368
FED. ROAD DIST. NO. 7		ILLINOIS	FED. AID PROJECT-	

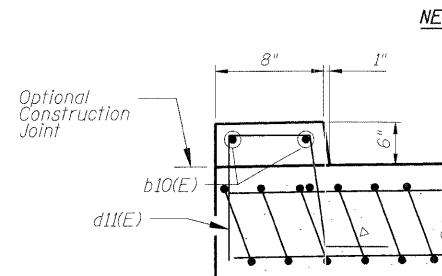
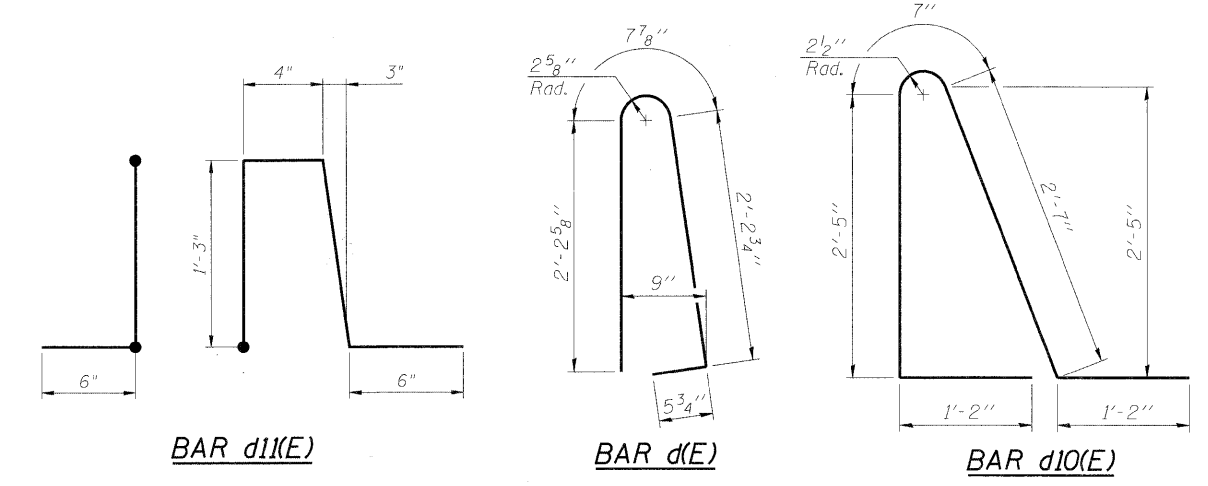
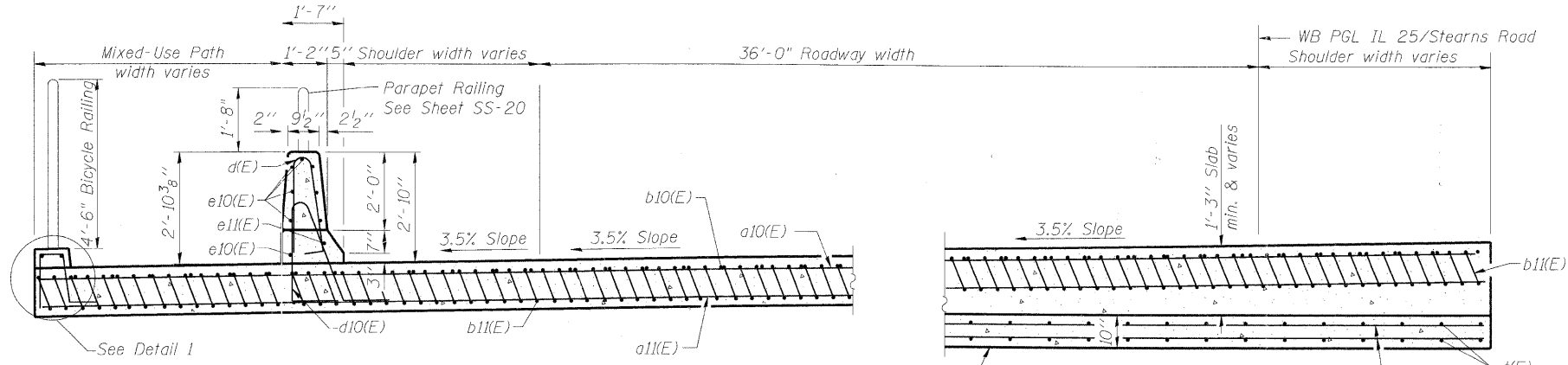
SHEET SS- 19
OF 22 SHEETS

Contract # 63074

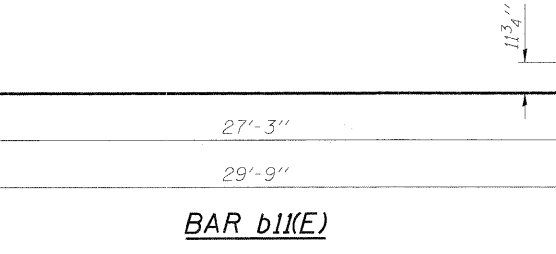
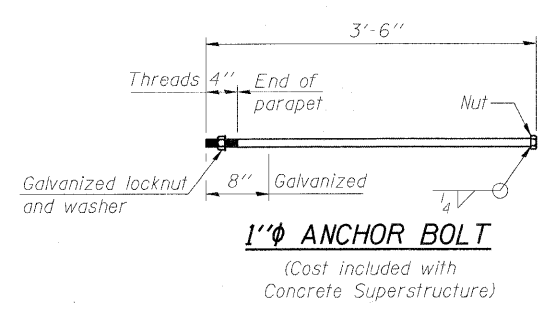
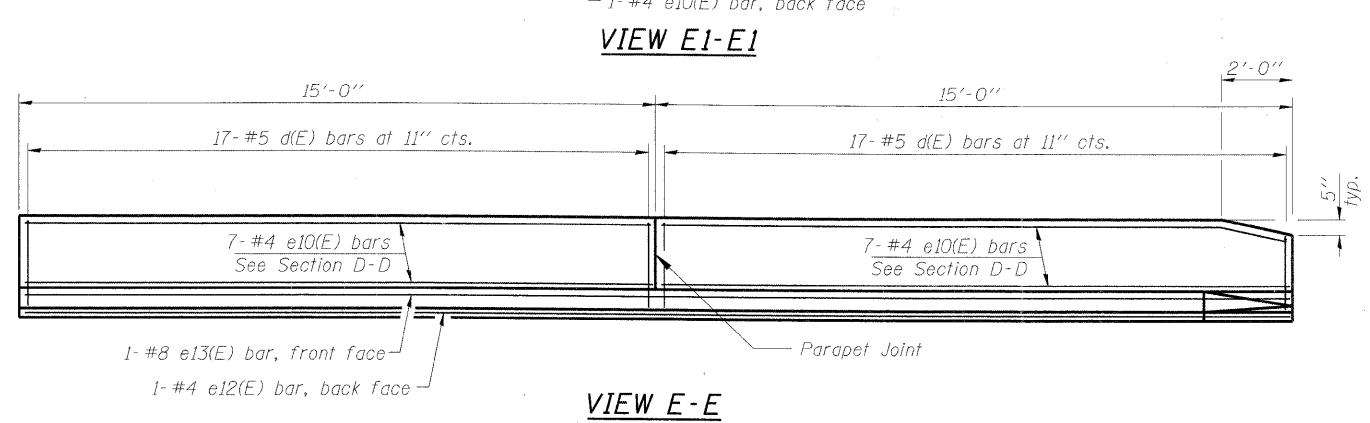
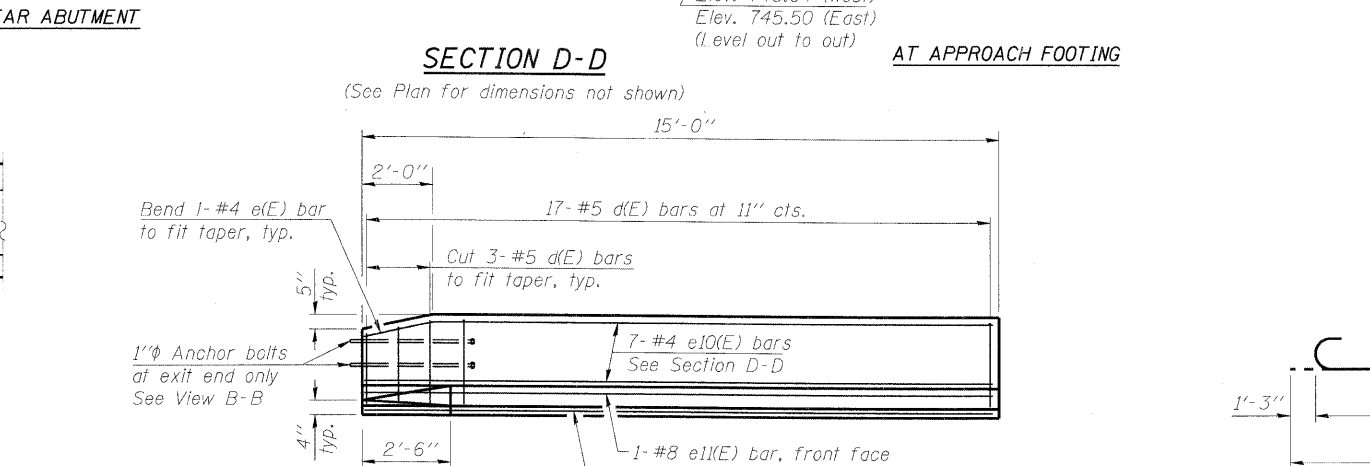


- Notes:
1. See sheet SS-18 for Detail A and View B-B.
 2. Approach slab and parapet concrete shall be paid for as Concrete Superstructure.
 3. Approach footing concrete shall be paid for as Concrete Structures.
 4. Reinforcement shall be paid for as Reinforcement Bars, Epoxy Coated.
 5. For v(E) bar details, see sheet SS-14 and SS-15.
 6. The approach footing maximum applied service bearing pressure (Qmax) = 2.0 ksf.
 7. For bar splicer details, see sheet SS-17.
 8. For Porous Granular Embankment (Special) and drainage treatment details, see sheet SS-2.
 9. For Parapet Joint details, see sheet SS-10.

* Tilt #9 b1(E) bars as required to maintain clearance.
*** Cost included with Concrete Superstructure.
*** 10 mil. Polyethylene bond breaker on steel trowel finish



DETAIL 1



TWO APPROACHES
BILL OF MATERIAL

Bar	No.	Size	Length	Shape
a10(E)	100	#4	30'-0"	—
a11(E)	184	#5	30'-3"	—
b10(E)	116	#4	29'-8"	—
b11(E)	268	#9	29'-9"	—
d(E)	102	#5	5'-7"	∧
d10(E)	102	#5	7'-11"	—
d11(E)	60	#5	3'-10"	JL
e10(E)	44	#4	14'-8"	—
e11(E)	2	#8	14'-8"	—
e12(E)	2	#4	29'-8"	—
e13(E)	2	#8	29'-8"	—
i(E)	220	#4	9'-9"	—
w(E)	160	#5	29'-9"	—
Concrete Superstructure		Cu. Yd.	200.3	
Concrete Structures		Cu. Yd.	35.0	
Reinforcement Bars, Epoxy Coated		Pound	46,000	

DESIGNED	AJK
CHECKED	AAV
DRAWN	AYR
CHECKED	HMA/DMC

BRIDGE APPROACH SLAB DETAILS (2 OF 2)
IL 25/STEARNS ROAD OVER THE
EAST BRANCH OF BREWSTER CREEK
F.A.P. 2503 - SEC. 06-00214-15-BR
KANE COUNTY
STATION 138+59.20
STRUCTURE NO. 045-2035

benesch
alfred benesch & company
Engineers • Surveyors • Planners
205 North Michigan Avenue, Suite 2400
Chicago, Illinois 60601
312-565-0450
Job # 3944

X:\39000s\3944\engineering_documents\IL25-Stearns_road\Brewster_SNO45-2035\WB\Final\0452035-63074-019-appr-2.dgn 11:23:18 AM 3/30/2009