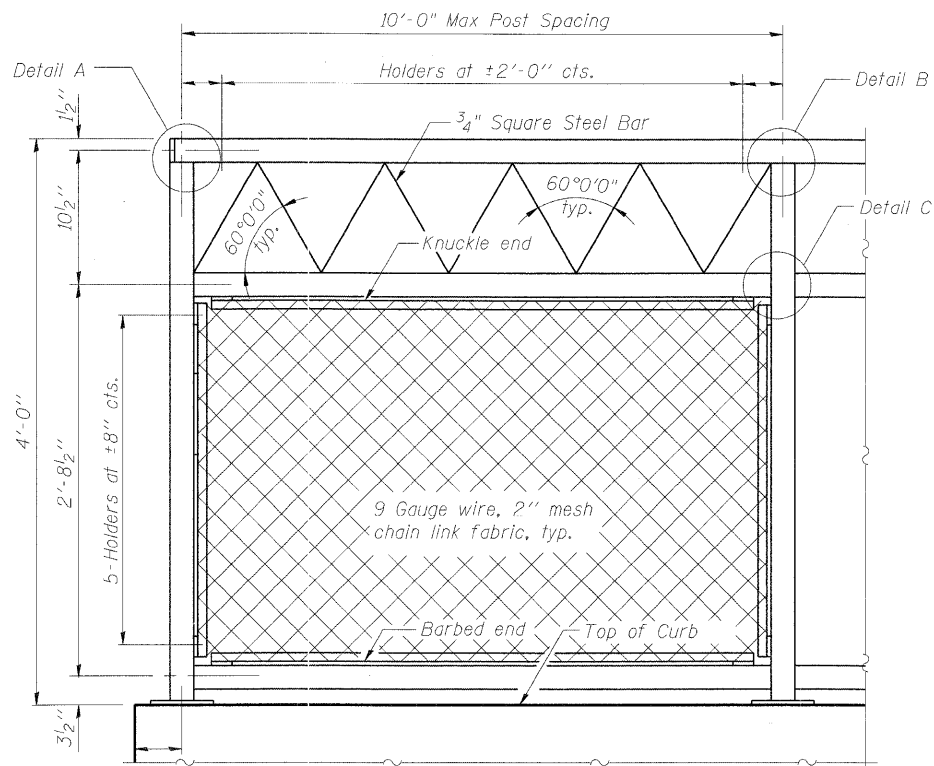


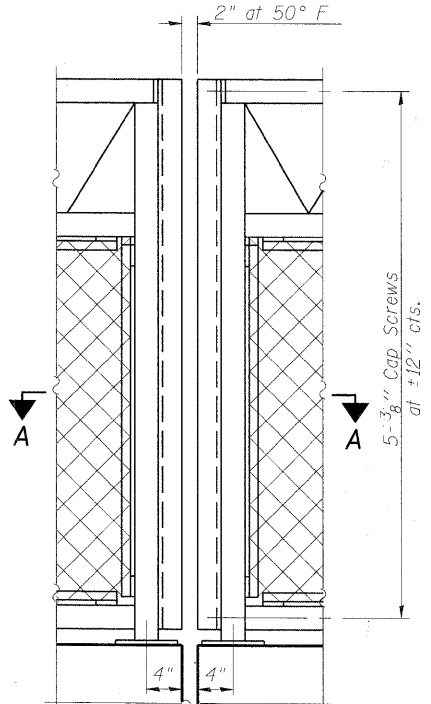
STATE OF ILLINOIS
DEPARTMENT OF TRANSPORTATION

ROUTE NO.	SECTION	COUNTY	TOTAL SHEETS	SHEET NO.
-	-	KANE	545	369
SHEET SS- 20 OF 22 SHEETS				

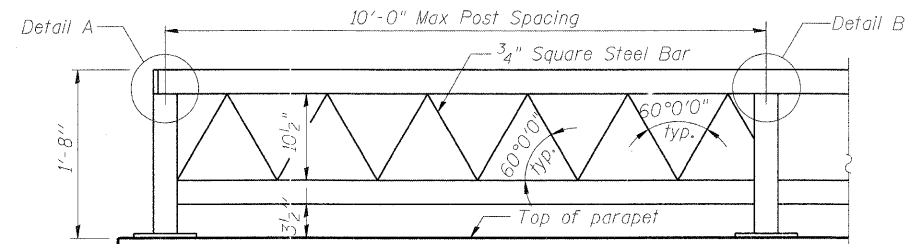
Contract # 63074



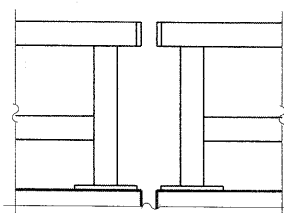
BICYCLE RAILING



BICYCLE RAILING



**PARAPET RAILING
ELEVATION**
(Inside Face of Two Element Rail)



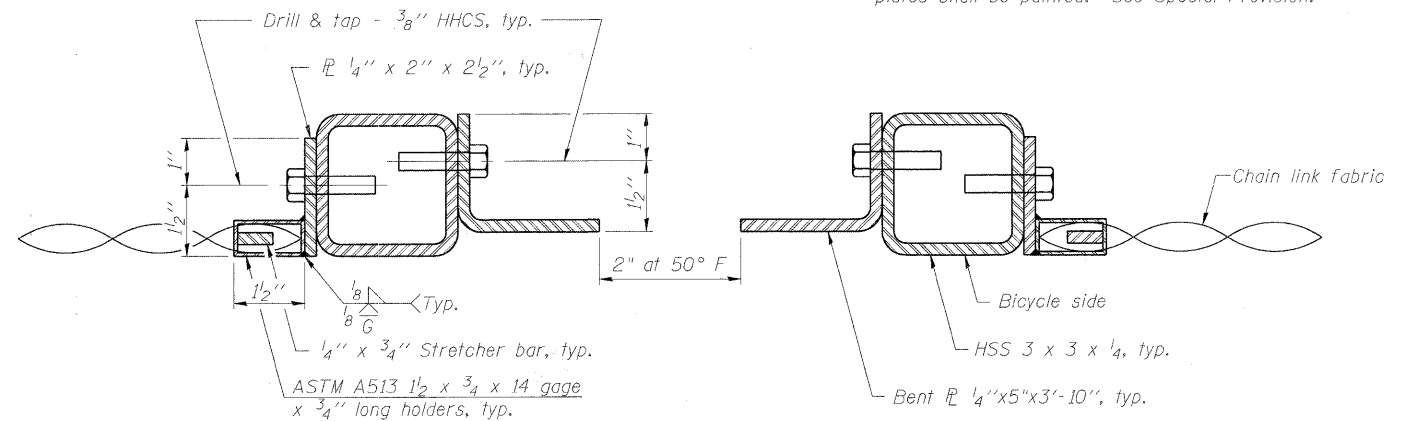
**PARAPET RAILING
ELEVATION AT EXPANSION JOINT**
(Two Element Rail Shown - Three Element Rail Similar)

ℙ 1/4" x 3" x 3"

DETAIL A

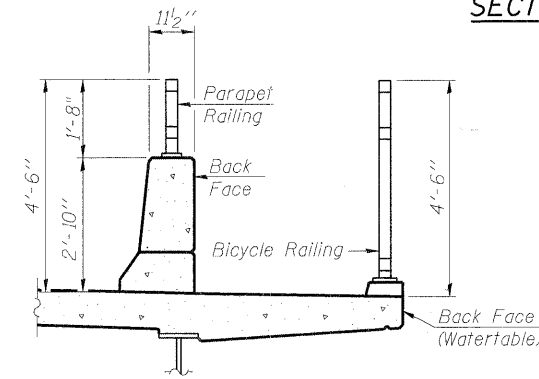
DETAIL B

DETAIL C

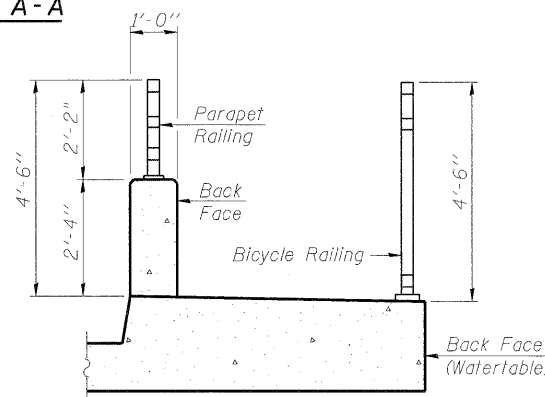


All post, railing, splices, anchor devices, and bent plates shall be painted. See Special Provision.

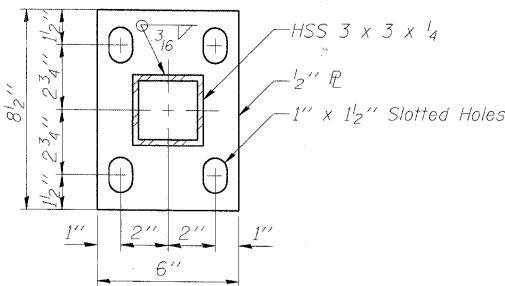
SECTION A-A



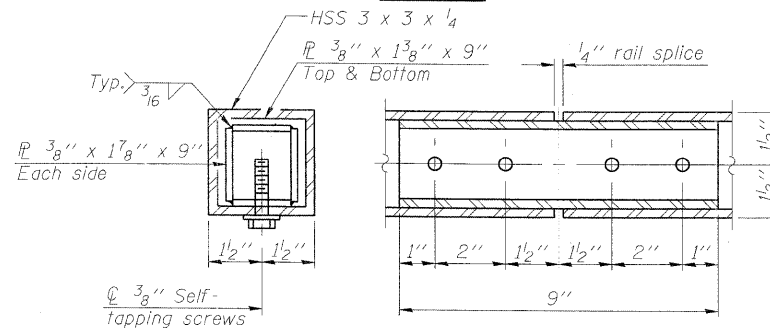
SECTION THRU DECK



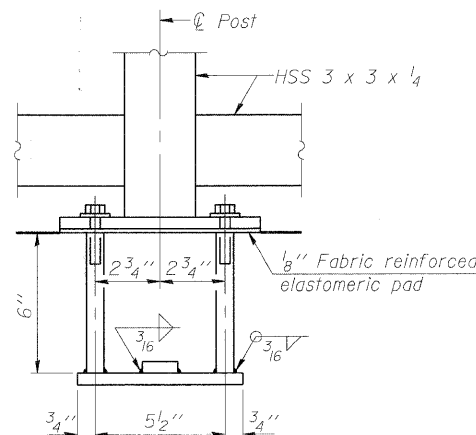
SECTION THRU SIDEWALK



BASE ℙ

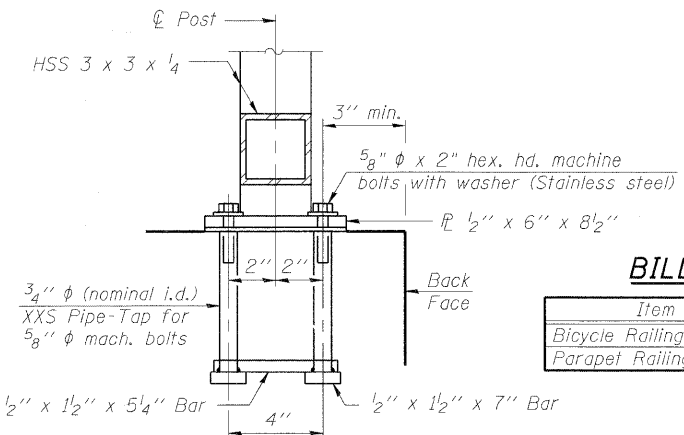


RAIL SPLICE



ANCHOR BOLT DETAILS

In lieu of the cast-in-place anchor device shown, the Contractor has the option of drilling and setting 5/8" φ anchor rods according to Article 509.06 of the Standard Specifications. Embedment shall be according to the manufacturer's specifications.



BILL OF MATERIAL

Item	Unit	Quantity
Bicycle Railing	Foot	130
Parapet Railing	Foot	130

MULTI-USE RAILING DETAILS
IL 25/STEARNS ROAD OVER THE
EAST BRANCH OF BREWSTER CREEK
F.A.P. 2503 - SEC. 06-00214-15-BR
KANE COUNTY
STATION 138+59.20
STRUCTURE NO. 045-2035

DESIGNED	AJK
CHECKED	AAV
DRAWN	AYR
CHECKED	HMA/DMC

R-29

10-1-08

(10'-0" Maximum Post Spacing)

benesch

alfred benesch & company
Engineers • Surveyors • Planners
205 North Michigan Avenue, Suite 2400
Chicago, Illinois 60601
312-565-0450
Job # 3944

x:\39000s\3944\engineering_documents\IL25-Stearns.over_Brewster_SNO45-2035(EB)_SNO45-2035(WB)_Final\0452035-63074-020-rail.dgn

11:23:23 AM

3/30/2009