

STATE OF ILLINOIS
DEPARTMENT OF TRANSPORTATION

| | | | | |
|-----------------------|---------|----------|------------------|-----------|
| ROUTE NO. | SECTION | COUNTY | TOTAL SHEETS | SHEET NO. |
| - | - | KANE | 545 | 373 |
| FED. ROAD DIST. NO. 7 | | ILLINOIS | FED. AID PROJECT | |

SHEET SC- 2
OF 4 SHEETS

Contract # 63074

GENERAL NOTES

- Design of Existing structure was checked against the design specifications as shown above to ensure adequacy as a mixed-use bridge.
- Plan dimensions and details relative to existing plans are subject to nominal construction variations. The Contractor shall field verify existing dimensions and details affecting new construction and make necessary approved adjustments prior to construction or ordering of materials. Such variations shall not be a cause for additional compensation for a change in scope of work, however, the Contractor will be paid for the quantity actually furnished at the unit price bid for the work.
- Existing Bearings at the Abutments are to be cleaned and painted in accordance with the Special Provisions. The paint color shall be Interstate Green, Munsell No. 7.5G 4/8.
- The existing structural steel coating contains lead. The Contractor shall take appropriate precautions to deal with the presence of lead on this project.

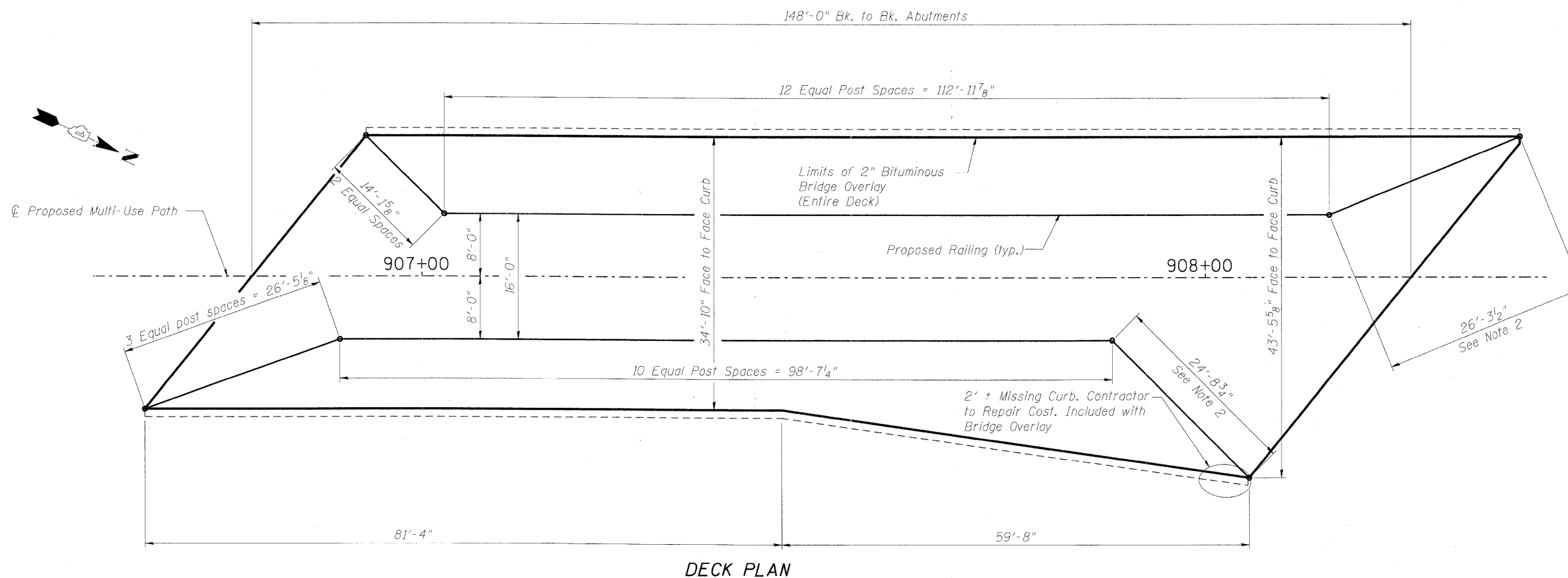
TOTAL BILL OF MATERIAL

| ITEM | UNIT | TOTAL |
|----------------------------------------------|---------|-------|
| Hot-Mix Asphalt Surface Course, Mix "C", N50 | Ton | 69 |
| Hot-Mix Asphalt Surface Removal (Deck) | Sq. Yd. | 605 |
| *Bicycle Railing | Foot | 305 |
| *Cleaning And Painting Bearings | Each | 13 |
| | | |
| | | |

* See Special Provision

INDEX OF SHEETS

- SC - 1 of 4 General Plan and Elevation
- SC - 2 of 4 Deck Plan and Bill of Material
- SC - 3 of 4 Deck Cross Sections
- SC - 4 of 4 Multi-Use Path Railing Details



DECK PLAN

Notes:

- For Deck cross sections see sheet SC-3.
- Provide a 4'-0" wide gate in this area for maintenance access. Provide 3 equal spaces for the remaining railing panels.

| | |
|----------|-----|
| DESIGNED | AJK |
| CHECKED | DMC |
| DRAWN | AJK |
| CHECKED | HMA |

**DECK PLAN AND BILL OF MATERIAL
CONVERSION OF EXISTING DUNHAM OVER
CCP RAILROAD TO MULTI USE BRIDGE
F.A.P. 360 - SEC. 06-00214-15-BR
KANE COUNTY
STATION 907+49.69
STRUCTURE NO. 045-3021**

benesch
alfred benesch & company
Engineers • Surveyors • Planners
205 North Michigan Avenue, Suite 2400
Chicago, Illinois 60601
312-565-0450
Job # 3944