

TOTAL SURVEYED	PLANNED
NOTE BOOK	AREAS CHECKED
NO.	

ORIGINAL SURVEYED	PLANNED
NOTE BOOK	AREAS CHECKED
NO.	

x:\3\2008\394\engineering\documents\Roadway\Cross Sections\stn.abc.stn.xls.dgn

FILE NAME	USER NAME = USER
FILES	DESIGNED - MAC
	DRAWN - MAC
	CHECKED - JJT
	DATE - 3/31/09

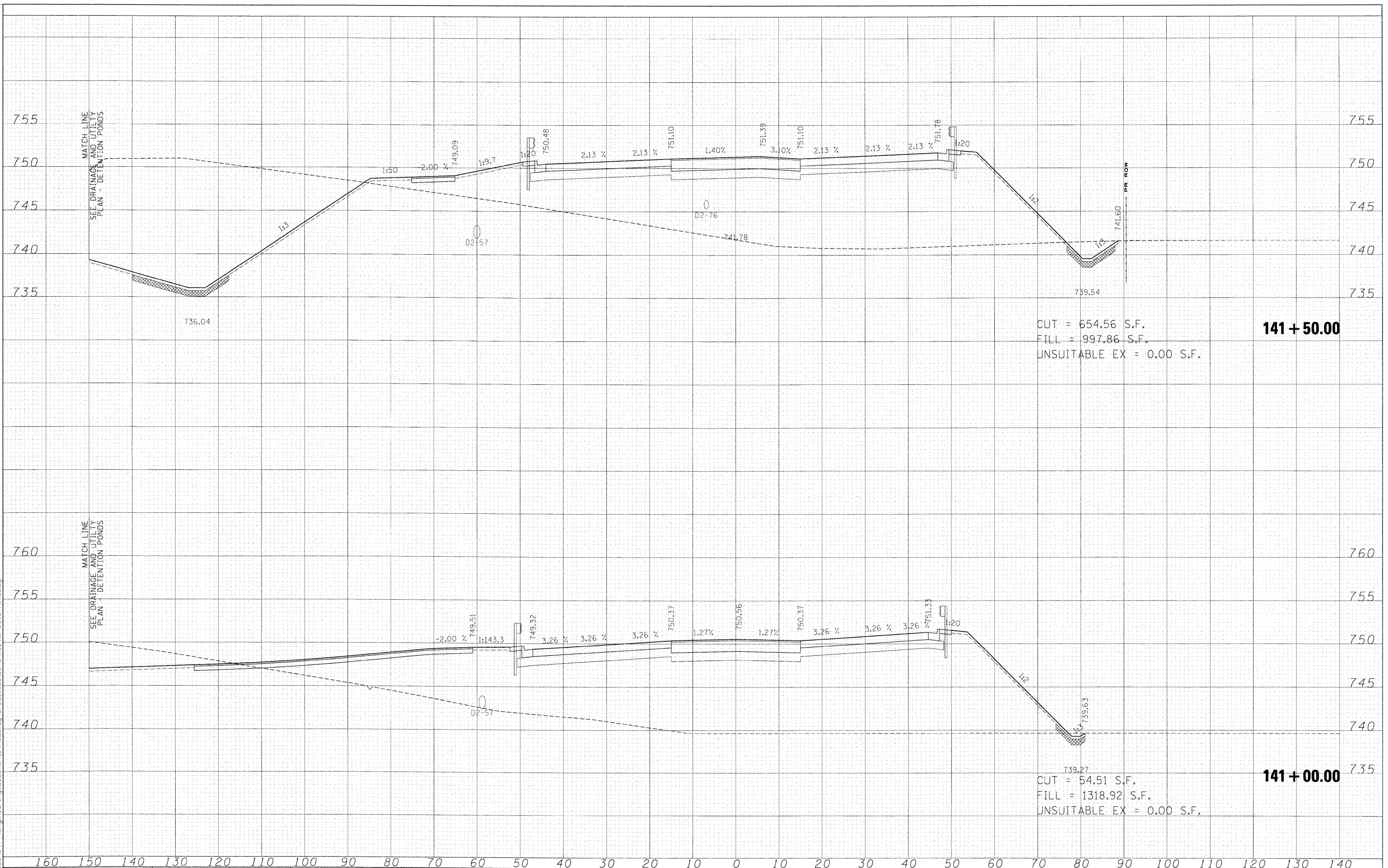
REVIS	REVIS
REVIS	REVIS
REVIS	REVIS
REVIS	REVIS

**KANE COUNTY
DIVISION OF TRANSPORTATION**

STEARNS ROAD CROSS SECTIONS

SCALE: SHEET NO. OF SHEETS STA. 141+00.00 TO STA. 141+50.00

F.A. RTE.	SECTION	COUNTY	TOTAL SHEETS	SHEET NO.
361	06-00214-15-BR	KANE/DUPAGE	545	471
FED. ROAD DIST. NO.			ILLINOIS FED. AID PROJECT	
CONTRACT NO. 63074				



CUT = 654.56 S.F.
FILL = 997.86 S.F.
UNSUITABLE EX = 0.00 S.F.

141 + 50.00

CUT = 54.51 S.F.
FILL = 1318.92 S.F.
UNSUITABLE EX = 0.00 S.F.

141 + 00.00