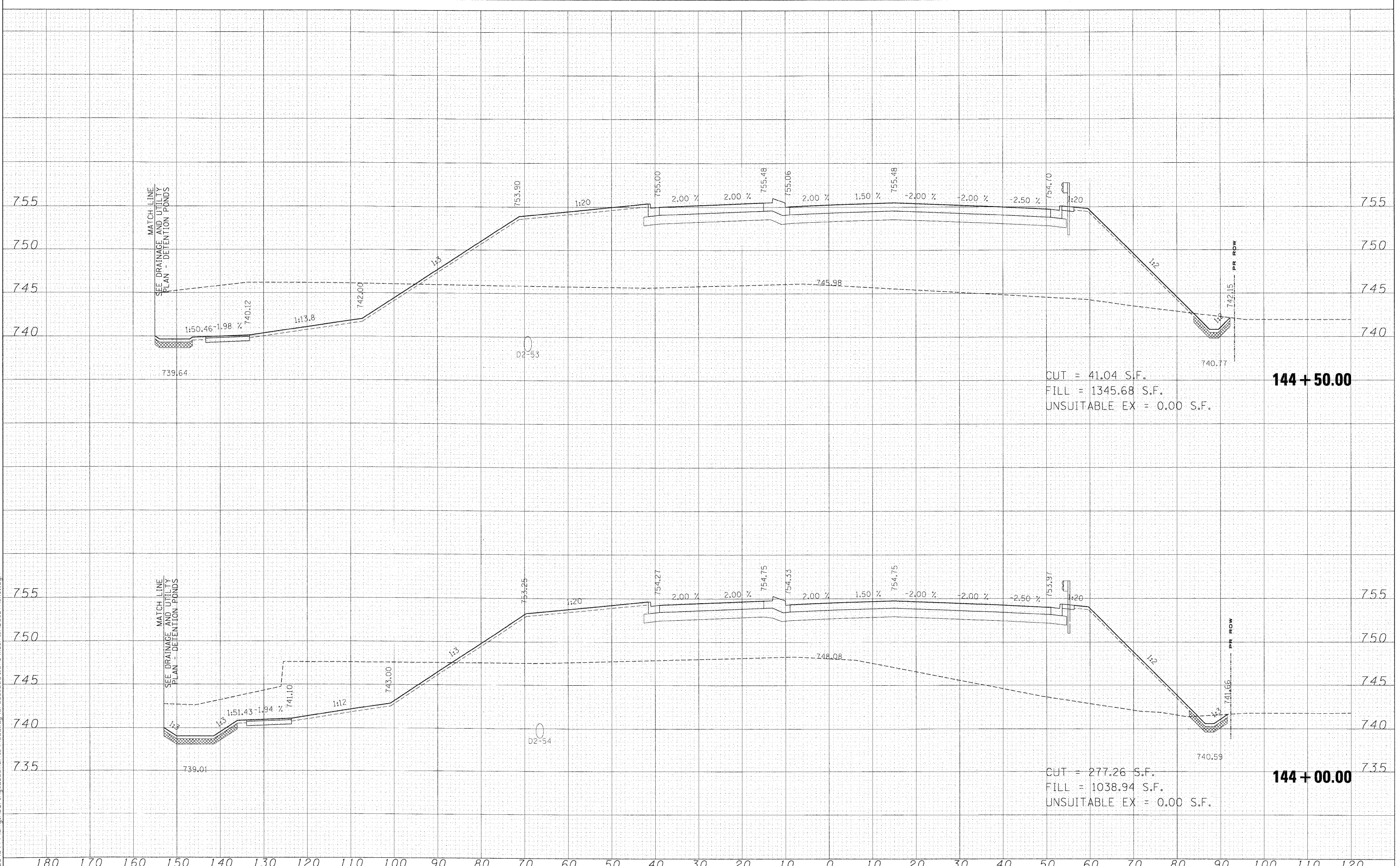


FINAL SURVEYED
 SURVEY NO. 101
 NOTE BOOK NO. 101
 AREAS CHECKED

ORIGINAL SURVEY
 SURVEY NO. 101
 NOTE BOOK NO. 101
 AREAS CHECKED



CUT = 41.04 S.F.
 FILL = 1345.68 S.F.
 UNSUITABLE EX = 0.00 S.F.

144 + 50.00

CUT = 277.26 S.F.
 FILL = 1038.94 S.F.
 UNSUITABLE EX = 0.00 S.F.

144 + 00.00

FILE NAME =	USER NAME = \$USER*	DESIGNED - MAC	REVISED -	KANE COUNTY DIVISION OF TRANSPORTATION	STEARNS ROAD CROSS SECTIONS			F.A. RTE.	SECTION	COUNTY	TOTAL SHEETS	SHEET NO.
FILES		DRAWN - MAC	REVISED -		361	06-00214-15-BR	KANE/DUPAGE	545	474			
		CHECKED - JJT	REVISED -		CONTRACT NO. 63074							
		DATE - 3/31/09	REVISED -		FED. ROAD DIST. NO. ILLINOIS FED. AID PROJECT							
SCALE: SHEET NO. OF SHEETS STA. 144+00.00 TO STA. 144+50.00												