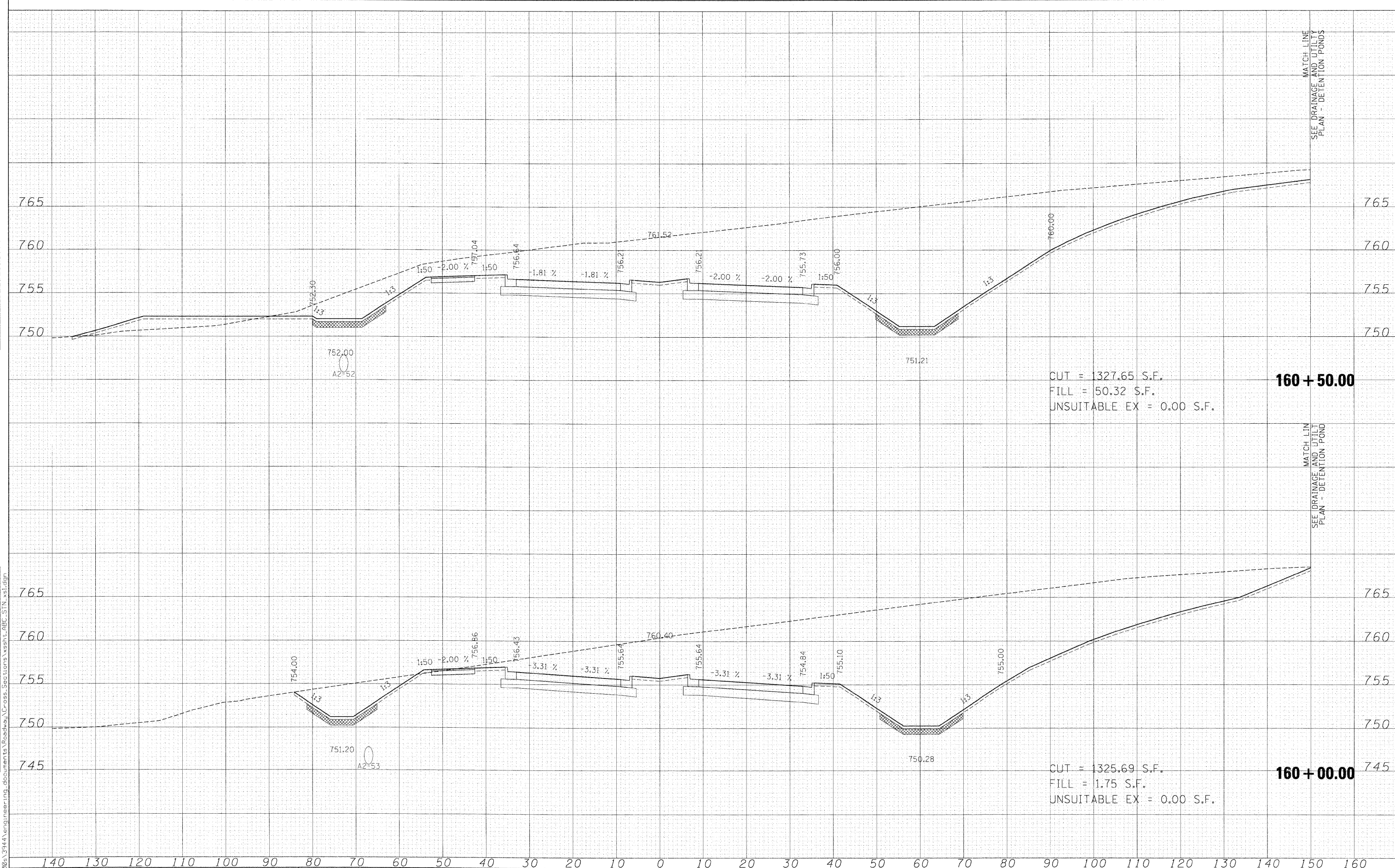


TOTAL SURVEYED	
SURVEY PLOTTED	
NOTE BOOK	
AREAS CHECKED	
NO.	

ORIGINAL SURVEYED	
SURVEY PLOTTED	
NOTE BOOK	
AREAS CHECKED	
NO.	

x:\3100a\3144\engineering\documents\Roadway\Cross Sections\ssstt.ABC.STN\_xsl.dgn



CUT = 1327.65 S.F.  
 FILL = 50.32 S.F.  
 UNSUITABLE EX = 0.00 S.F.

**160 + 50.00**

CUT = 1325.69 S.F.  
 FILL = 1.75 S.F.  
 UNSUITABLE EX = 0.00 S.F.

**160 + 00.00**

FILE NAME =	USER NAME = *USER*	DESIGNED - MAC	REVISED -	<b>KANE COUNTY</b> <b>DIVISION OF TRANSPORTATION</b>	<b>STEARNS ROAD CROSS SECTIONS</b>				F.A. RTE.	SECTION	COUNTY	TOTAL SHEETS	SHEET NO.		
*FILES*		DRAWN - MAC	REVISED -		SCALE:	SHEET NO.	OF	SHEETS	STA. 160+00.00	TO STA. 160+50.00	361	06-00214-15-BR	KANE/DUPAGE	545	490
		CHECKED - JJT	REVISED -												
		DATE - 3/31/09	REVISED -												
										CONTRACT NO. 63074					
										FED. ROAD DIST. NO. ILLINOIS FED. AID PROJECT					