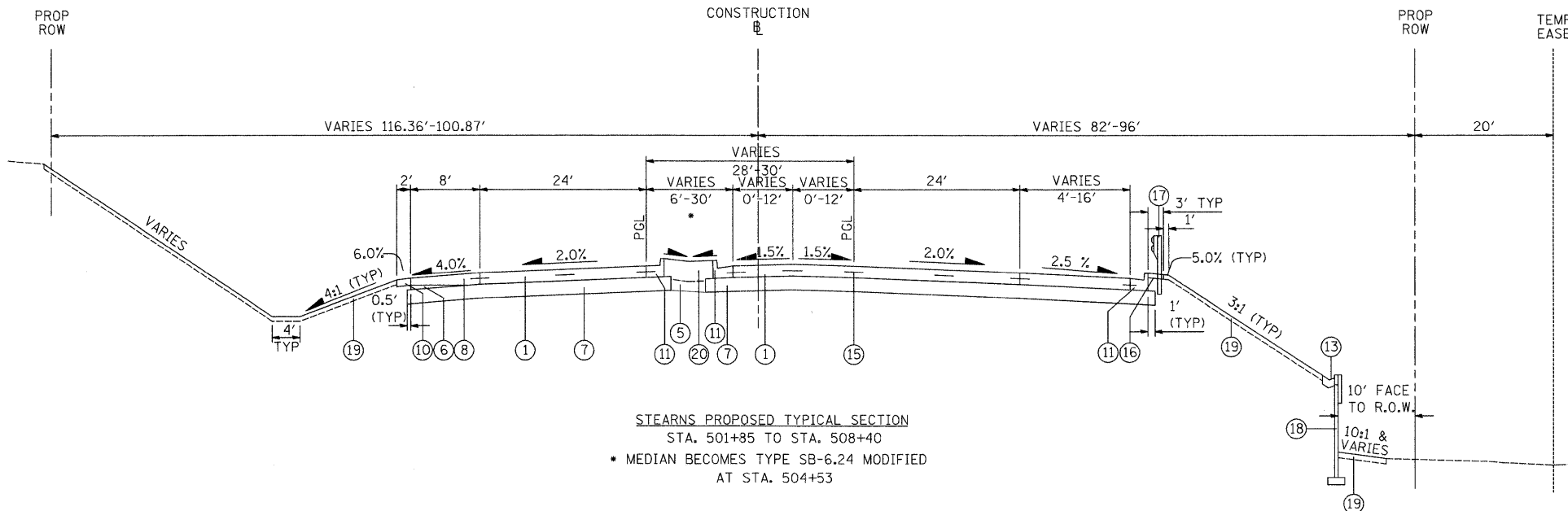
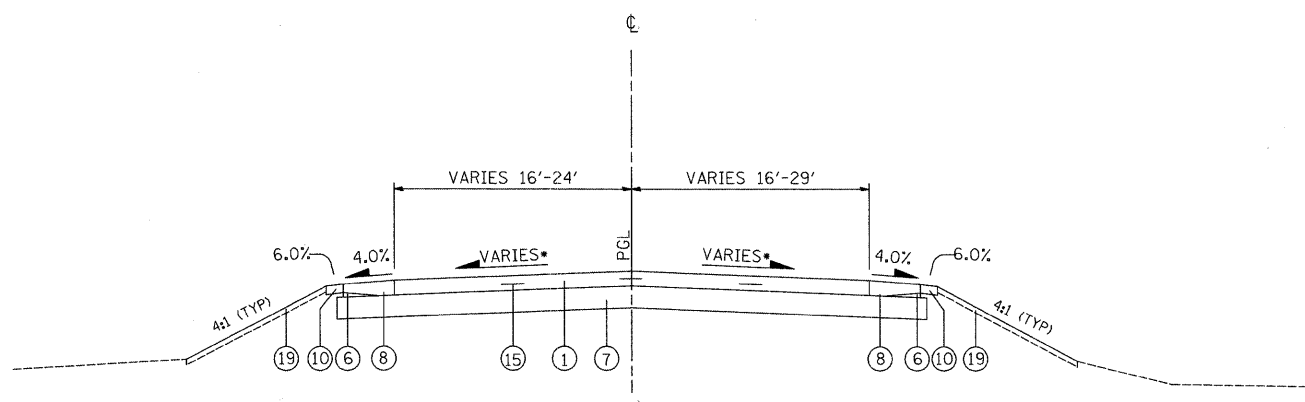


STA. 504+87 TO STA. 508+40



STEARNS PROPOSED TYPICAL SECTION  
STA. 501+85 TO STA. 508+40  
• MEDIAN BECOMES TYPE SB-6.24 MODIFIED AT STA. 504+53



UMB DENSTOCK ROAD PROPOSED TYPICAL SECTION  
STA. 700+34.67 TO STA. 702+51

• ROADWAY SUPERELEVATED, SEE SUPERELEVATION TABLE FOR RATES & LOCATIONS

LEGEND

- ① PORTLAND CEMENT CONCRETE PAVEMENT 10" (JOINTED) (42000501)
- ② POLYMERIZED HOT-MIX ASPHALT SURFACE COURSE, MIX "F", N90, 2" (40603595)
- ③ NOT USED
- ④ POLYMERIZED HOT-MIX ASPHALT BINDER COURSE, IL-19.0, N90, 8 3/4" (40701896)
- ⑤ EMBANKMENT
- ⑥ SUB-BASE GRANULAR MATERIAL, TYPE B (31101000)
- ⑦ AGGREGATE SUBGRADE 12" (Z0001050)
- ⑧ PORTLAND CEMENT CONCRETE SHOULDERS 6" (SPECIAL)
- ⑨ CONCRETE MEDIAN, TYPE SB-6.24 (MODIFIED) (60620200)
- ⑩ AGGREGATE SHOULDERS, TYPE B 6" (48101500)
- ⑪ COMBINATION CONCRETE CURB AND GUTTER, TYPE B-6.24 (60605000)
- ⑫ COMBINATION CONCRETE CURB AND GUTTER, TYPE B-6.12 (60603800)
- ⑬ CONCRETE GUTTER, TYPE A (60602500)
- ⑭ CONCRETE MEDIAN, TYPE SB-6.24 (60620000)
- ⑮ #6 BARS (EPOXY COATED) 30" LENGTH, @ 30" CENTERS AT PAVEMENT TO PAVEMENT JOINTS  
#6 BARS (EPOXY COATED) 24" LENGTH, @ 24" CENTERS AT PAVEMENT TO SHOULDER JOINTS  
#6 BARS (EPOXY COATED) 24" LENGTH, @ 24" CENTERS AT PAVEMENT TO C&G/MEDIAN JOINTS (INCIDENTAL TO P.C.C. PAVEMENT)
- ⑯ HMA SHOULDERS 6" (48203021)
- ⑰ STEEL PLATE BEAM GUARD RAIL, TYPE A, 6 FOOT POSTS (63000001)
- ⑱ MECHANICALLY STABILIZED EARTH RETAINING WALL (XX004056)
- ⑲ TOPSOIL FURNISH AND PLACE, 4" (21101615) & SEEDING CLASS 7 (25000350) (SEE LANDSCAPING SHEETS FOR LIMITS OF SEEDING)
- ⑳ TOPSOIL FURNISH AND PLACE, 24" (21101685) & SEEDING CLASS 7 (25000350)

UMB DENSTOCK ROAD - PCC

STRUCTURAL DESIGN TRAFFIC:	YEAR 2020	
PV = 11,100	SU = 60	MU = 840
ROAD/STREET CLASSIFICATION: CLASS I		
PERCENT OF STRUCTURE DESIGN TRAFFIC IN DESIGN LANE		
P = 50	S = 50	M = 50
TRAFFIC FACTOR	ACTUAL TF = 0.6	
	MINIMUM TF = N/A	
P.C.C. THICKNESS = 10.0 INCHES		
SUBGRADE SUPPORT RATING:		
SSR = POOR		



FILE NAME =	USER NAME = ead	DESIGNED - JSM	REVISED -
		DRAWN - JSM	REVISED -
	PLOT SCALE = 1/8" = 1' / IN.	CHECKED - DNM	REVISED -
	PLOT DATE = 4/16/2009	DATE - 3/30/09	REVISED -

**KANE COUNTY  
DIVISION OF TRANSPORTATION**

**PROPOSED TYPICAL SECTIONS - STEARNS ROAD &  
UMB DENSTOCK ROAD**

SCALE: N.T.S. SHEET NO. 6 OF 6 SHEETS STA. 700+34.67 TO STA. 702+51

F.A. RTE.	SECTION	COUNTY	TOTAL SHEETS	SHEET NO.
361	06-00214-25-BR	KANE	220	11
CONTRACT NO. 63076				
FED. ROAD DIST. NO. 1 [ILLINOIS] FED. AID PROJECT				