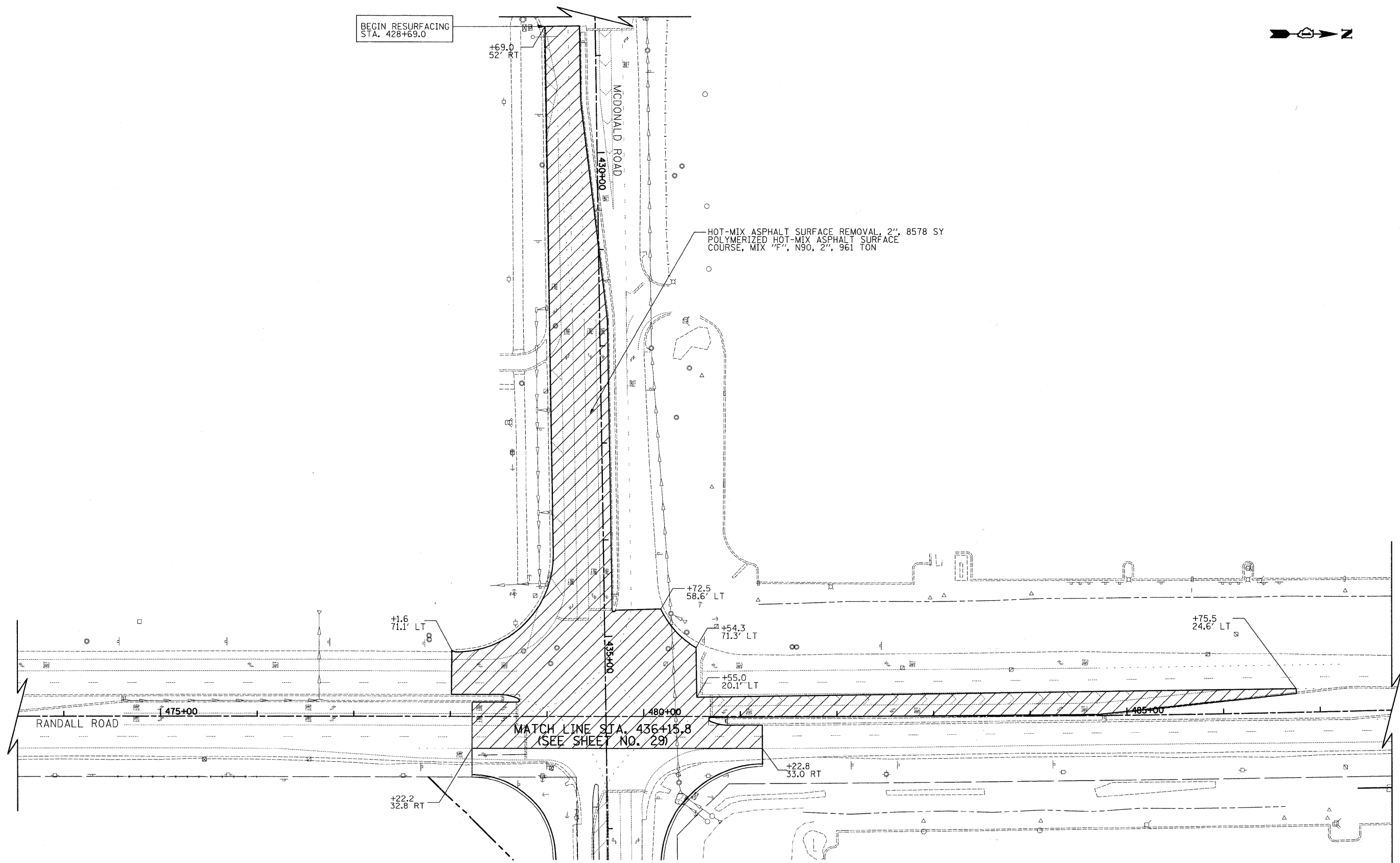





BEGIN RESURFACING
STA. 428+69.0



FILE NAME =		USER NAME = jam	DESIGNED - DNM	REVISED -	KANE COUNTY DIVISION OF TRANSPORTATION	RESURFACING PLAN MCDONALD ROAD AND RANDALL ROAD INTERSECTION			F.A. RTE.	SECTION	COUNTY	TOTAL SHEETS	SHEET NO.
		PLOT SCALE = 50,000.00' / IN.	DRAWN - EAD	REVISED -		361	06-00215-25-BR	KANE	220	28			
PLOT DATE = 3/27/2009	CHECKED - DNM	REVISED -	SCALE: 1" = 50' SHEET NO. 1 OF 1 SHEETS STA. TO STA.			CONTRACT NO. 63076							
DATE - 3/30/09	REVISOR -	REVISED -	FED. ROAD DIST. NO. 1 [ILLINOIS] FED. AID PROJECT										