

NOTES
SEE STANDARD 635006-03 FOR GUARDRAIL MARKER PLACEMENT



MATCH LINE STA. 499+00
(SEE SHEET NO. 33)

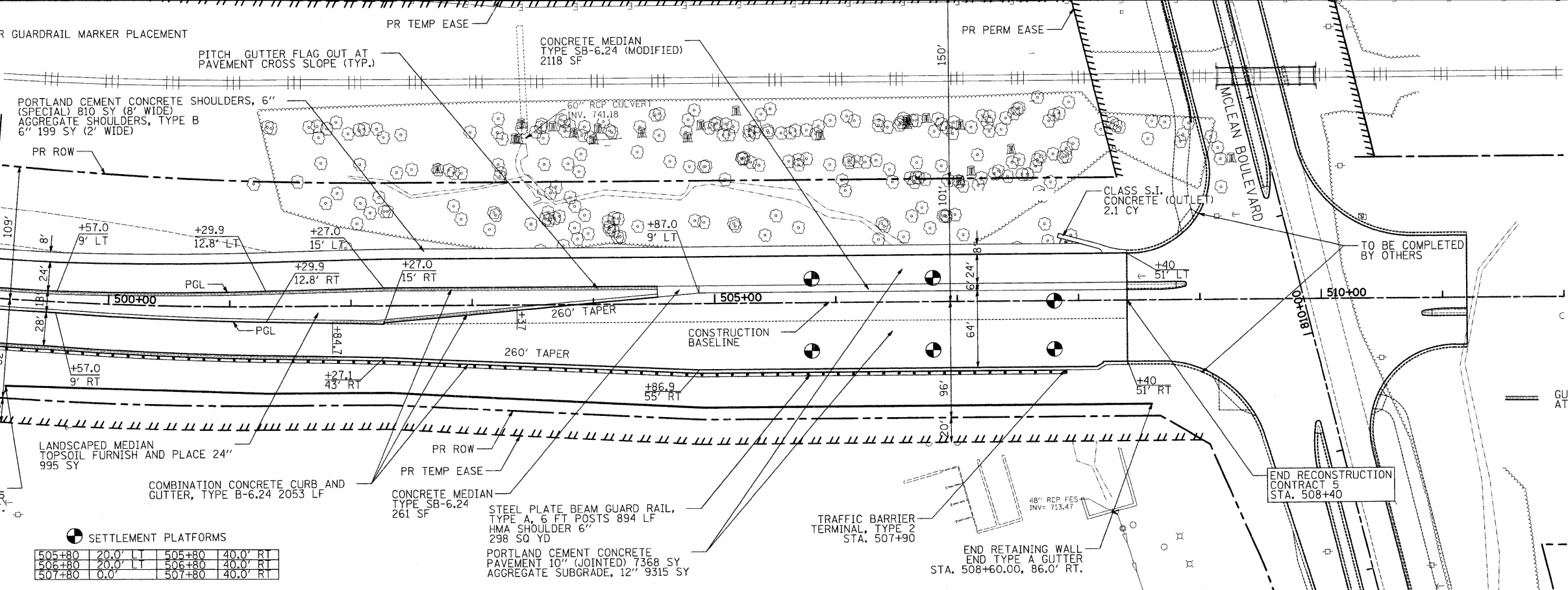
MATCH LINE STA. 499+00
(SEE SHEET NO. 34)

END RECONSTRUCTION
CONTRACT 5
STA. 508+40

STEARNS ROAD

PLAN	SURVEYED	BY	DATE
	PLOTTED		
	CHECKED		
	REVISIONS		
	NO.		

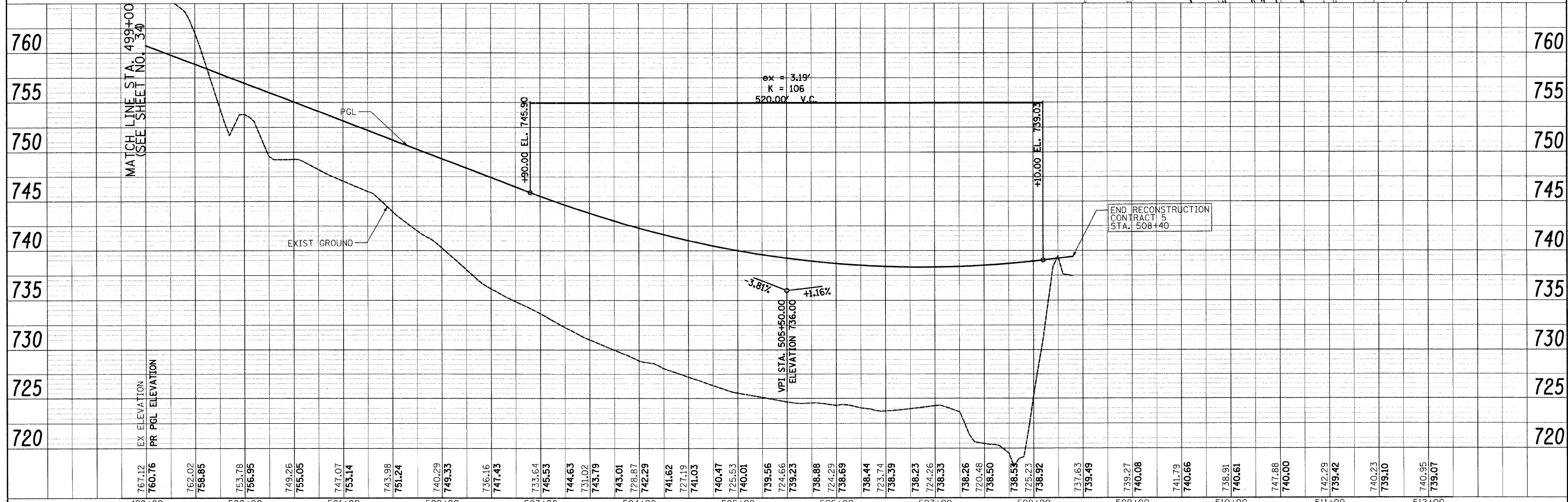
PROFILE	SURVEYED	BY	DATE
	PLOTTED		
	CHECKED		
	REVISIONS		
	NO.		



SETTLEMENT PLATFORMS

505+80	20.0' LT	505+80	40.0' RT
506+80	20.0' LT	506+80	40.0' RT
507+80	0.0'	507+80	40.0' RT

STEEL PLATE BEAM GUARD RAIL,
TYPE A, 6 FT POSTS 894 LF
HMA SHOULDER 6"
298 SQ YD
PORTLAND CEMENT CONCRETE
PAVEMENT 10" (JOINTED) 7368 SY
AGGREGATE SUBGRADE, 12" 9315 SY



FILE NAME =	USER NAME = ead	DESIGNED - JSM	REVISED -	KANE COUNTY DIVISION OF TRANSPORTATION	PLAN & PROFILE - STEARNS ROAD	F.A. R.T.E. 361	SECTION 06-00214-25-BR	COUNTY KANE	TOTAL SHEETS 220	SHEET NO. 35		
	PLLOT SCALE = 50.0000' / IN.	DRAWN - EAD	REVISED -			SCALE: 1"=50'	SHEET NO. 7 OF 7 SHEETS	STA. 499+00	TO STA. 508+40	CONTRACT NO. 63076		
	PLLOT DATE = 4/15/2009	CHECKED - EAD	REVISED -			FED. ROAD DIST. NO. 1 ILLINOIS FED. AID PROJECT						
		DATE - 3/30/09	REVISED -									