

LIMITS OF WORK ZONE FOR THIS STAGE

LEGEND

- ○ ○ TYPE I OR II BARRICADES (OR DRUMS) WITH MONO-DIRECTIONAL STEADY-BURN LIGHTS @ 50' CENTERS (25' SPACING IN TAPERS, 10' SPACING IN CORNER RADII)
- ⌌ ⌌ ⌌ TYPE III BARRICADE WITH FLASHING LIGHTS
- ↑ TEMPORARY TRAFFIC SIGN ON PERMANENT SUPPORT
- ⬇ TEMPORARY TRAFFIC SIGNAL
- ⇨ DIRECTION OF TRAFFIC
- FLASHING AMBER BEACON

NOTE:

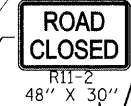
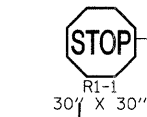
ALL PAVEMENT MARKINGS ON FINAL PAVEMENT SHALL BE TYPE III TAPE, OTHERWISE ALL PAVEMENT MARKINGS WILL BE TEMPORARY PAVEMENT MARKINGS

STATIONS DENOTED WITH • ARE OFF OF EXISTING MC DONALD ROAD ALIGNMENT

ALL DIAMOND SHAPE CONSTRUCTION WARNING SIGNS SHALL BE 48" X 48" UNLESS OTHERWISE NOTED

EXISTING W11-10 (TRUCK CROSSING) SIGNS SHALL REMAIN IN PLACE TO WARN MOTORISTS ABOUT TRUCKS ENTERING AND LEAVING HIGHWAY, IF THE EXISTING SIGNS ARE REMOVED FOR ANY REASON, TEMPORARY BARRICADE MOUNTED W11-10 SHALL BE INSTALL IN PLACE.

FOLLOW STANDARD 701316 FOR TEMPORARY SIGNAL AND SIGNING FOR TEMPORARY SIGNAL



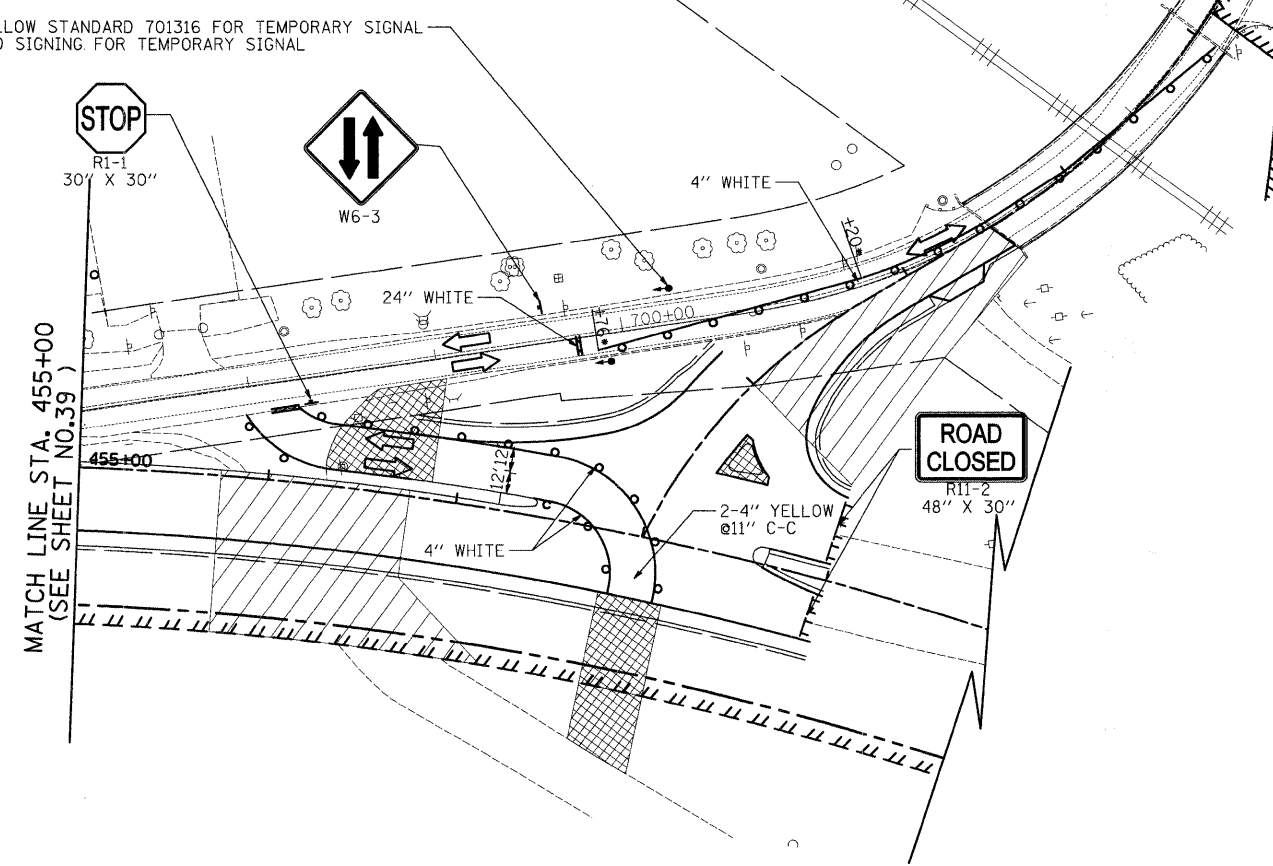
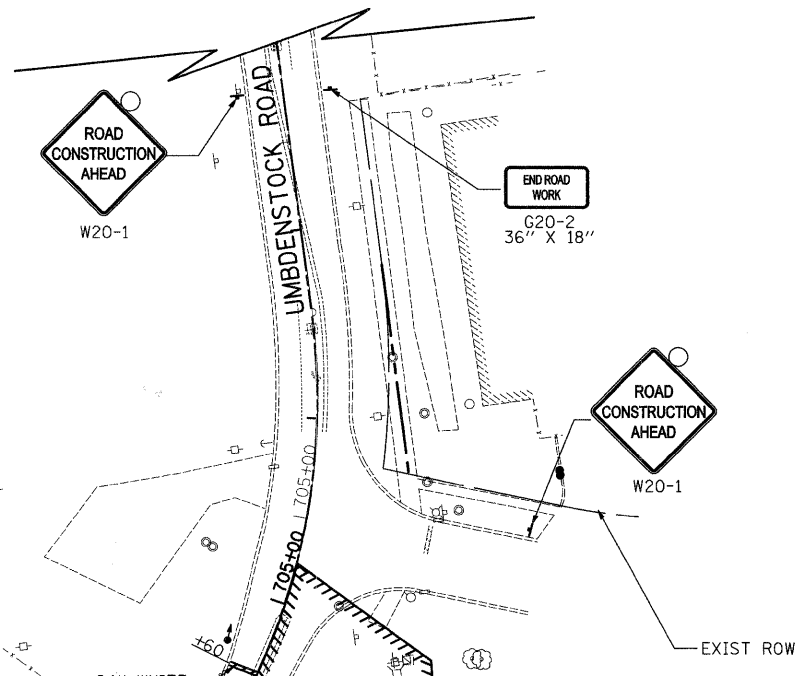
MATCH LINE STA. 455+00 (SEE SHEET NO.39)

R1-1
30' X 30'

W6-3

R11-2
48' X 30'

FOLLOW STANDARD 701316 FOR TEMPORARY SIGNAL AND SIGNING FOR ONE WAY TRAFFIC CONTROL. PLAN SHEET DOES NOT SHOW THE COMPLETE STANDARD, ALTHOUGH IT SHALL BE FOLLOWED. TEMPORARY RUMBLE STRIPS ARE NOT REQUIRED. CONTRACTOR MUST USE TEMPORARY PORTABLE BRIDGE TRAFFIC SIGNALS PER IDOT CHECK SHEET #23.



STEARNS ROAD

FILE NAME =	USER NAME = jsm	DESIGNED - JSM	REVISED -	KANE COUNTY DIVISION OF TRANSPORTATION	MAINTENANCE OF TRAFFIC - STEARNS ROAD STAGE 2B	F.A. RTE.	SECTION	COUNTY	TOTAL SHEETS	SHEET NO.
	PLOT SCALE = 50.0000' / IN.	CHECKED - DNM	REVISED -			361	06-00214-25-BR	KANE	220	41
PLOT DATE = 3/30/2009	DATE - 3/30/09	REVISED -	REVISED -	SCALE: 1" = 50'	SHEET NO. 5 OF 14 SHEETS	STA. 455+00	TO STA.	CONTRACT NO. 63076		
						FED. ROAD DIST. NO. 1 ILLINOIS FED. AID PROJECT				