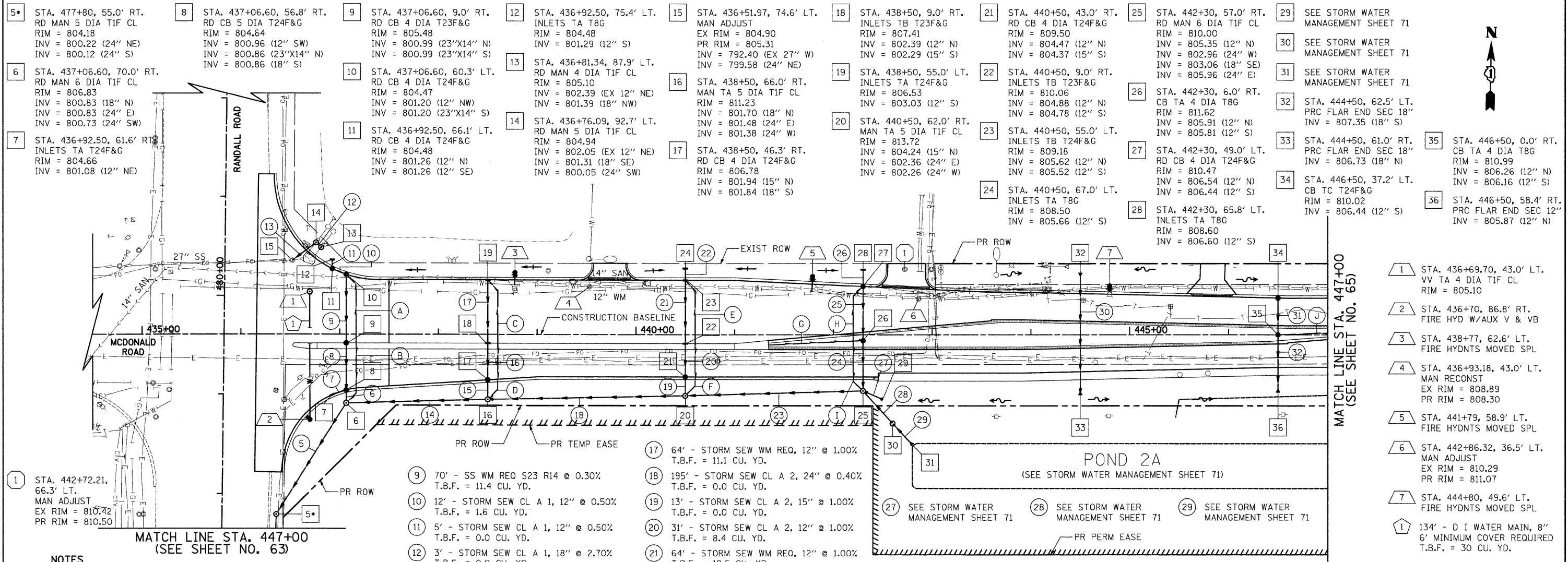
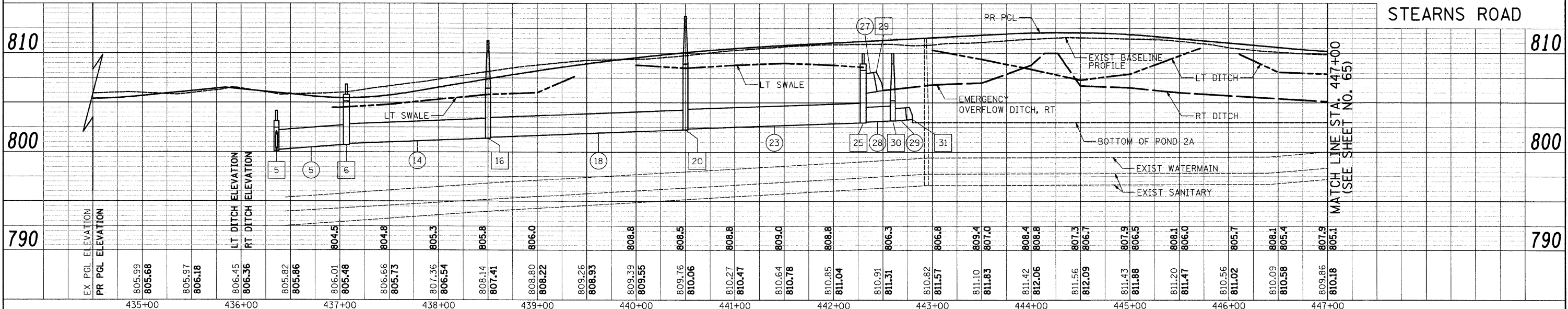


DATE	
BY	
REVIEWED	
FLOW	
ALIGNMENT	CHECKED
NOTE BOOK	CHECKED
NO.	
NO.	
NO.	

DATE	
BY	
REVIEWED	
GRADES	CHECKED
STRUCTURE	NOTED
NO.	
NO.	
NO.	



- NOTES**
- THE STATION AND OFFSET CALL-OUT FOR FLARED END SECTIONS IS MEASURED FROM THE TOE.
 - THE STATION AND OFFSET CALL-OUT FOR DRAINAGE STRUCTURE 5 IS WITH RESPECT TO THE RANDALL ROAD ALIGNMENT.
- 1 STA. 442+72.21, 66.3' LT. MAN ADJUST EX RIM = 810.42 PR RIM = 810.50
 - 2 STA. 436+70, 86.8' RT. FIRE HYD W/AUX V & VB
 - 3 STA. 438+77, 62.6' LT. FIRE HYDNTS MOVED SPL
 - 4 STA. 436+93.18, 43.0' LT. MAN RECONST EX RIM = 808.89 PR RIM = 808.30
 - 5 STA. 441+79, 58.9' LT. FIRE HYDNTS MOVED SPL
 - 6 STA. 442+86.32, 36.5' LT. MAN ADJUST EX RIM = 810.29 PR RIM = 811.07
 - 7 STA. 444+80, 49.6' LT. FIRE HYDNTS MOVED SPL
 - 1 134' - D I WATER MAIN, 8" 6' MINIMUM COVER REQUIRED T.B.F. = 30 CU. YD.
 - 5 127' - STORM SEW CL A 2, 24" @ 0.40% T.B.F. = 0.0 CU. YD.
 - 6 6' - STORM SEW CL A 2, 18" @ 0.50% T.B.F. = 0.0 CU. YD.
 - 7 12' - STORM SEW CL A 1, 12" @ 1.00% T.B.F. = 1.6 CU. YD.
 - 8 44' - SS 2 RCEP S23 R14 @ 0.30% T.B.F. = 8.4 CU. YD.
 - 9 70' - SS WM REQ S23 R14 @ 0.30% T.B.F. = 11.4 CU. YD.
 - 10 12' - STORM SEW CL A 1, 12" @ 0.50% T.B.F. = 1.6 CU. YD.
 - 11 5' - STORM SEW CL A 1, 12" @ 0.50% T.B.F. = 0.0 CU. YD.
 - 12 3' - STORM SEW CL A 1, 18" @ 2.70% T.B.F. = 0.0 CU. YD.
 - 13 25' - STORM SEW CL A 2, 24" @ 1.90% T.B.F. = 5.0 CU. YD.
 - 14 138' - STORM SEW CL A 2, 24" @ 0.40% T.B.F. = 0.0 CU. YD.
 - 15 14' - STORM SEW CL A 2, 18" @ 1.00% T.B.F. = 0.0 CU. YD.
 - 16 35' - STORM SEW CL A 2, 15" @ 1.00% T.B.F. = 8.7 CU. YD.
 - 17 64' - STORM SEW WM REQ, 12" @ 1.00% T.B.F. = 11.1 CU. YD.
 - 18 195' - STORM SEW CL A 2, 24" @ 0.40% T.B.F. = 0.0 CU. YD.
 - 19 13' - STORM SEW CL A 2, 15" @ 1.00% T.B.F. = 0.0 CU. YD.
 - 20 31' - STORM SEW CL A 2, 12" @ 1.00% T.B.F. = 8.4 CU. YD.
 - 21 64' - STORM SEW WM REQ, 12" @ 1.00% T.B.F. = 12.5 CU. YD.
 - 22 8' - STORM SEW CL A 1, 12" @ 0.50% T.B.F. = 0.2 CU. YD.
 - 23 175' - STORM SEW CL A 2, 24" @ 0.34% T.B.F. = 0.0 CU. YD.
 - 24 46' - STORM SEW CL A 2, 12" @ 1.00% T.B.F. = 11.2 CU. YD.
 - 25 53' - STORM SEW WM REQ, 12" @ 1.00% T.B.F. = 12.1 CU. YD.
 - 26 12' - STORM SEW CL A 1, 12" @ 0.50% T.B.F. = 0.0 CU. YD.
 - 30 112' - STORM SEW WM REQ, 18" @ 0.50% T.B.F. = 13.7 CU. YD.
 - 31 36' - STORM SEW CL A 2, 12" @ 0.50% T.B.F. = 5.4 CU. YD.
 - 32 52' - STORM SEW CL A 2, 12" @ 0.50% T.B.F. = 6.8 CU. YD.
 - A 58' - PIPE UNDERDRAINS, 6"
 - B 60' - PIPE UNDERDRAINS, 6"
 - C 52' - PIPE UNDERDRAINS, 6"
 - D 69' - PIPE UNDERDRAINS, 6"
 - E 52' - PIPE UNDERDRAINS, 6"
 - F 65' - PIPE UNDERDRAINS, 6"
 - G 96' - PIPE UNDERDRAINS, 6"
 - H 46' - PIPE UNDERDRAINS, 6"
 - I 60' - PIPE UNDERDRAINS, 6"
 - J 94' - PIPE UNDERDRAINS, 6"



FILE NAME =	USER NAME = jsm	DESIGNED - MJP	REVISED -	KANE COUNTY DIVISION OF TRANSPORTATION	DRAINAGE AND UTILITIES - STEARNS ROAD	F.A. RTE. 361	SECTION 06-00214-25-BR	COUNTY KANE	TOTAL SHEETS 220	SHEET NO. 64		
PLOT SCALE = 50.0000' / IN.						CHECKED - DNM	REVISED -	CONTRACT NO. 63076				
PLOT DATE = 3/27/2009						DATE - 3/30/09	REVISED -	SCALE: 1"=50' SHEET NO. 2 OF 14 SHEETS STA. 434+00 TO STA. 447+00				
FED. ROAD DIST. NO. 1 [ILLINOIS] FED. AID PROJECT												