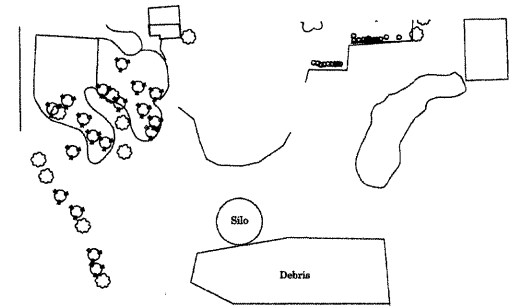
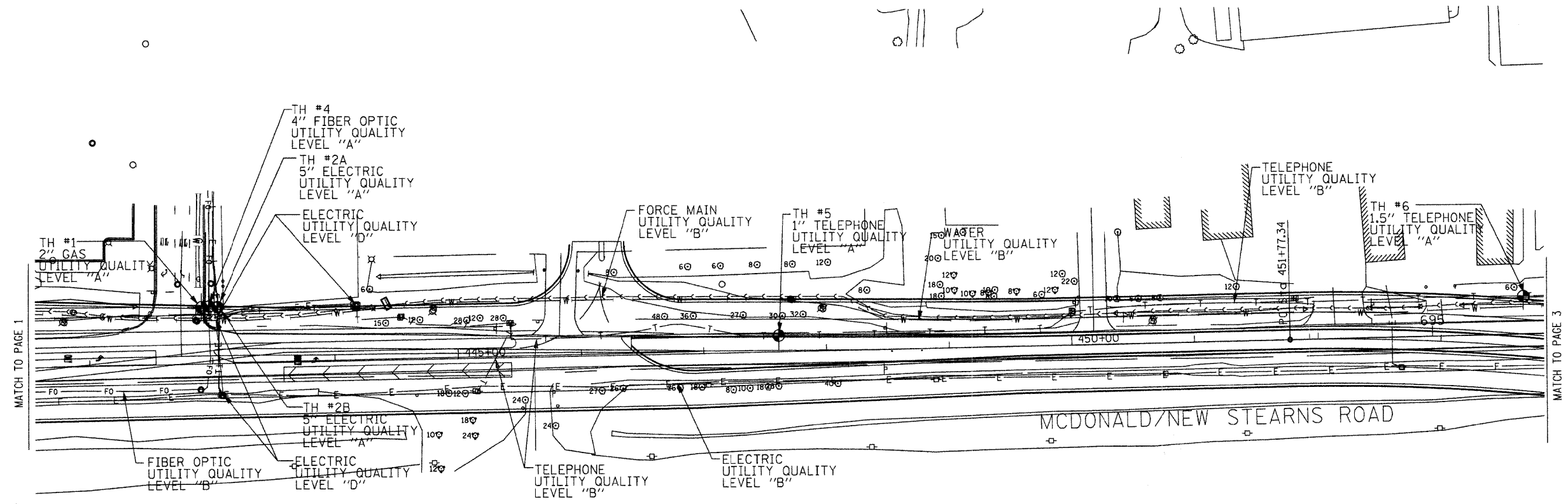
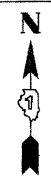
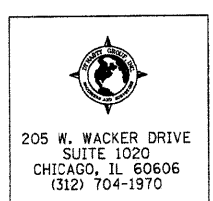


NOTE:
FOR TEST HOLE INFORMATION SEE SPECIFICATIONS, "VERIFIED UTILITY LOCATIONS."



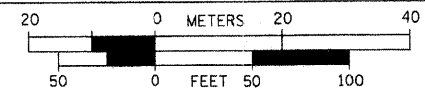
Utility Quality Level "D" electric information is based off field investigation but has not been surveyed.

The AT&T locations depicted have been obtained through the application of geophysical methods to determine the existence and approximate horizontal position of these facilities. However, AT&T will not provide TBE Group, Inc. with utility records nor allow access to their field closures (pedestals/manholes etc.), to help verify the locations of their existing underground facilities. Therefore, TBE is unable to verify the completeness of the AT&T locations depicted in accordance with the CIASCE Standard 38-02.



—●—●—●—●—●—	FORCE MAIN
—CTV—CTV—	CABLE TV
—T—T—	TELEPHONE
—G—G—	GAS
—E—E—	ELECTRIC
—W—W—	WATER
—FO—FO—	FIBER OPTIC
—○—	TBE TEST HOLE

Utilities shown in color on these plans as depicted in the legend have been investigated by TBE Group, Inc. in accordance with SUE Industry Standards. All other information shown has been provided to TBE Group, Inc. by others. TBE's SUE QL "B" field investigation was performed from 3/24/08 to 6/13/08. TBE's SUE QL "A" field investigation was performed from 11/19/08 to 1/05/09. Changes to utilities after 6/13/08 may have been made and therefore may result in variances from this plan. Consideration should be given to updating this plan if deemed advisable prior to final design and construction.



TBE GROUP, INC.
CIVIL ENGINEERING • TRANSPORTATION • ENVIRONMENTAL
PLANNING • UTILITY ENGINEERING/LOCATING

Checked By: Robert Clemens
Date: 1/26/09

TBE Job No. IL09500274,
284, 285, 286, 288, 289
SUE Plan Page: 2 of 21

FILE NAME =	USER NAME =	DESIGNED <u>EG, IP, SW</u>	REVISED
*FILE#	DRAWN <u>KLC</u>	CHECKED <u>RLC</u>	REVISIONS
PLOT SCALE =	DATE <u>1/26/09</u>		

STATE OF ILLINOIS
DEPARTMENT OF TRANSPORTATION
AND KANE COUNTY HIGHWAY DEPT.

STEARNS ROAD CORRIDOR

SCALE: SHEET NO. STA. TO STA.

F.A. RTE.	SECTION	COUNTY	TOTAL SHEETS	SHEET NO.
361	N/A	KANE/DUPAGE	220	78
CONTRACT NO. 2, 3, 4, 5				
FED. ROAD DIST. NO. ILLINOIS Job No.:				