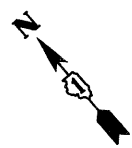
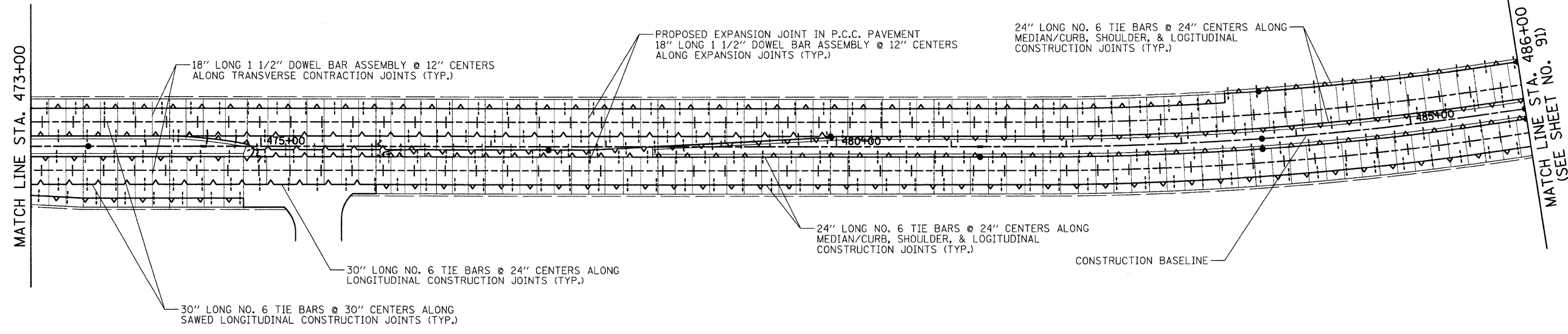


LEGEND

	CONSTRUCTION JOINT WITH TIES BARS
	CONSTRUCTION JOINT WITH DOWEL BARS
	SAWED JOINT WITH TIE BARS
	CONTRACTION JOINT WITH DOWEL BARS
	EXPANSION JOINT WITH DOWEL BARS

- LEGEND**
1. TRANSVERSE DOWELED JOINTS SHALL BE SPACED AT 15' O.C. (TYP.) IN THE PORTLAND CEMENT CONCRETE PAVEMENT, 10" (JOINTED) UNLESS OTHERWISE NOTED. JOINT LAYOUT MAY BE MODIFIED (±3' PER STANDARD 420101 & 420106) UPON APPROVAL BY THE ENGINEER TO INCORPORATE CHANGES DURING CONSTRUCTION.
 2. REINFORCING STEEL IS NOT SHOWN ALONG EVERY JOINT ON THE PLAN, BUT IS INTENDED TO BE PLACED ALONG EACH JOINT AS NOTED.
 3. REFERENCE IDOT STANDARD DETAILS 420001, 420101, 420106, & 420111.



	USER NAME = ead	DESIGNED - JSM	REVISED -	KANE COUNTY DIVISION OF TRANSPORTATION	PAVEMENT JOINTING PLAN - STEARNS ROAD	F.A. RTE. 361	SECTION 06-00214-25-BR	COUNTY KANE	TOTAL SHEETS 220	SHEET NO. 90	
	PLOT SCALE = 50.0000' / IN.	CHECKED - BJC	REVISED -			CONTRACT NO. 63076					
	PLOT DATE = 3/27/2009	DATE - 3/30/09	REVISED -			FED. ROAD DIST. NO. 1 ILLINOIS FED. AID PROJECT					
					SCALE: 1" = 50'		SHEET NO. 2 OF 3 SHEETS		STA. 460+00 TO STA. 486+00		