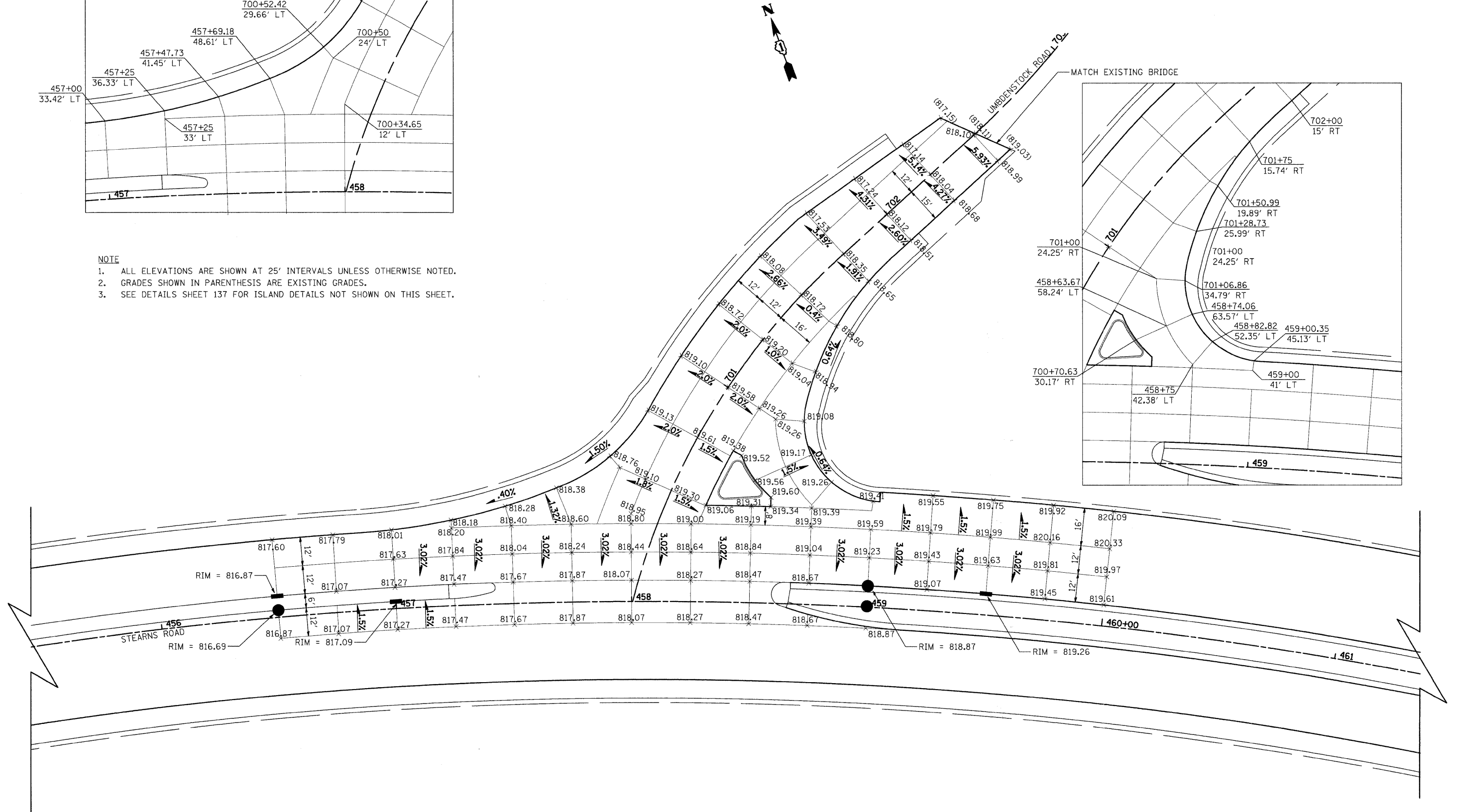


NOTE

1. ALL ELEVATIONS ARE SHOWN AT 25' INTERVALS UNLESS OTHERWISE NOTED.
2. GRADES SHOWN IN PARENTHESIS ARE EXISTING GRADES.
3. SEE DETAILS SHEET 137 FOR ISLAND DETAILS NOT SHOWN ON THIS SHEET.



FILE NAME =	USER NAME = ead	DESIGNED - EAD	REVISED -	KANE COUNTY DIVISION OF TRANSPORTATION	GRADING PLAN - UMBDENSTOCK ROAD	F.A. RTE. = 361	SECTION = 06-00214-25-BR	COUNTY = KANE	TOTAL SHEETS = 220	SHEET NO. = 92		
	PLOT SCALE = 20.0000' / IN.	DRAWN - EAD	REVISED -			SCALE: 1" = 20'	SHEET NO. 4 OF 6 SHEETS	STA. TO STA.	CONTRACT NO. 63076			
	PLOT DATE = 3/27/2009	CHECKED - DNM	REVISED -			FED. ROAD DIST. NO. 1 ILLINOIS FED. AID PROJECT						
		DATE - 3/30/09	REVISED -									