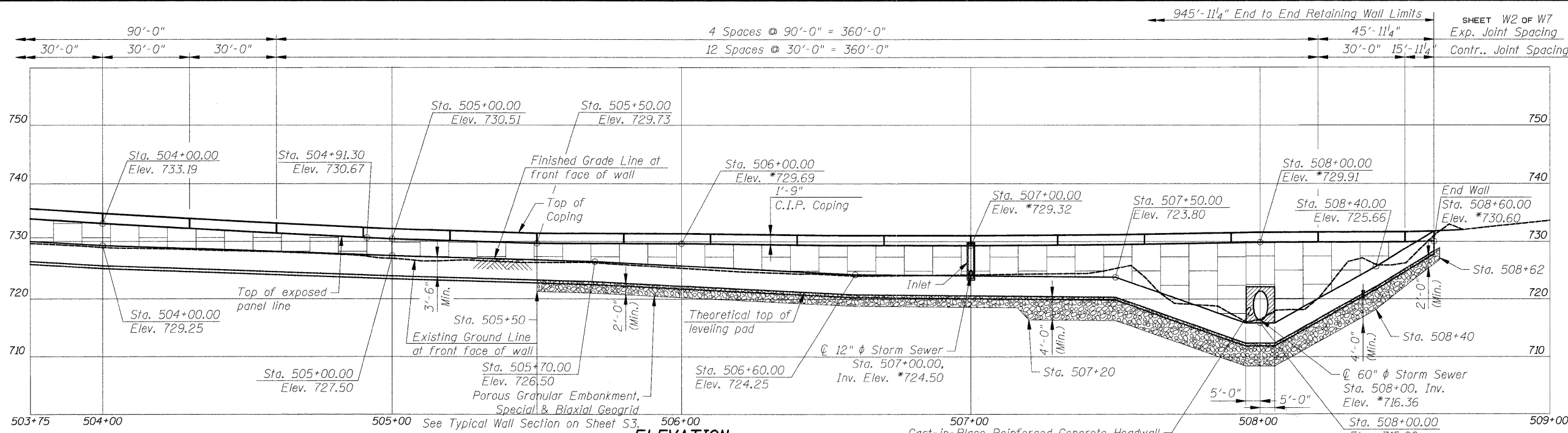
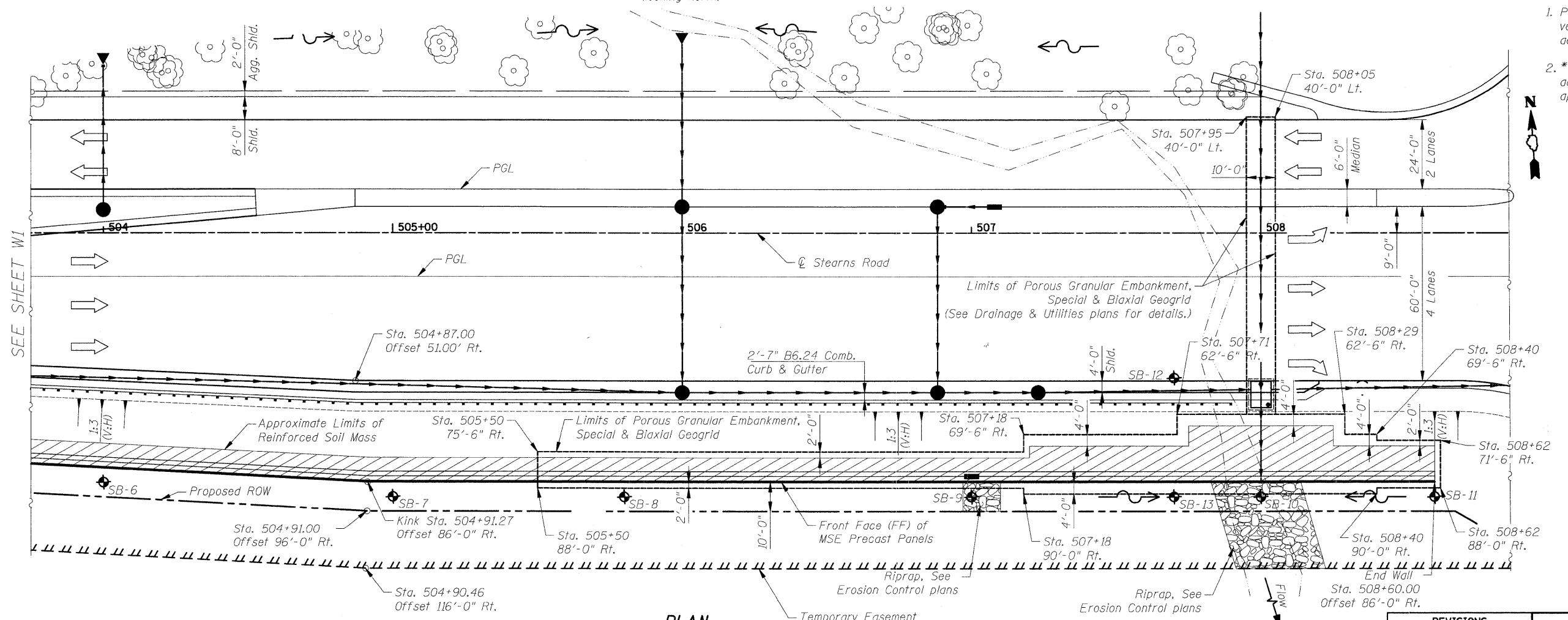


ROUTE NO.	SECTION	COUNTY	TOTAL SHEETS	SHEET NO.
F.A.P. 361	06-00214-25-BR	KANE	220	124
FED. ROAD DIST. NO. 1		ILLINOIS	FED. AID PROJECT-	

Contract # 63076



ELEVATION
(looking North)
Included in the cost of Mechanically Stabilized Earth Retaining Wall.



PLAN

LEGEND

- ◆ Soil Borings
- Proposed ROW
- /// Temporary Easement
- Prop. Storm Sewer
- ↘ Drainage Arrow

- Notes:**
1. Panels must be arranged to provide continuous vertical joints for the full height of the wall to accommodate potential differential settlement.
 2. * - indicates that the elevations have been adjusted for the anticipated settlement of approximately 6 inches.

REVISIONS	
NAME	DATE

ILLINOIS DEPARTMENT OF TRANSPORTATION
GENERAL PLAN II
STEARNS ROAD (FAP 361) RETAINING WALL
STA. 499+20 TO STA. 508+60
SECTION 06-00214-25-BR KANE COUNTY
STRUCTURE NUMBER 045-7000
SCALE: None DRAWN BY: M. Lange
DATE: March 30, 2009 CHECKED BY: G. Hatlestad

CIVILTECH
450 E Devon Ave, Suite 300
Itasca, Illinois 60143
Tel: 630.773.3900 Fax: 630.773.3975
www.civiltechinc.com

J:\2118\Road\Struct\02_gpe.dgn 16:51:51 PM 3/30/2009