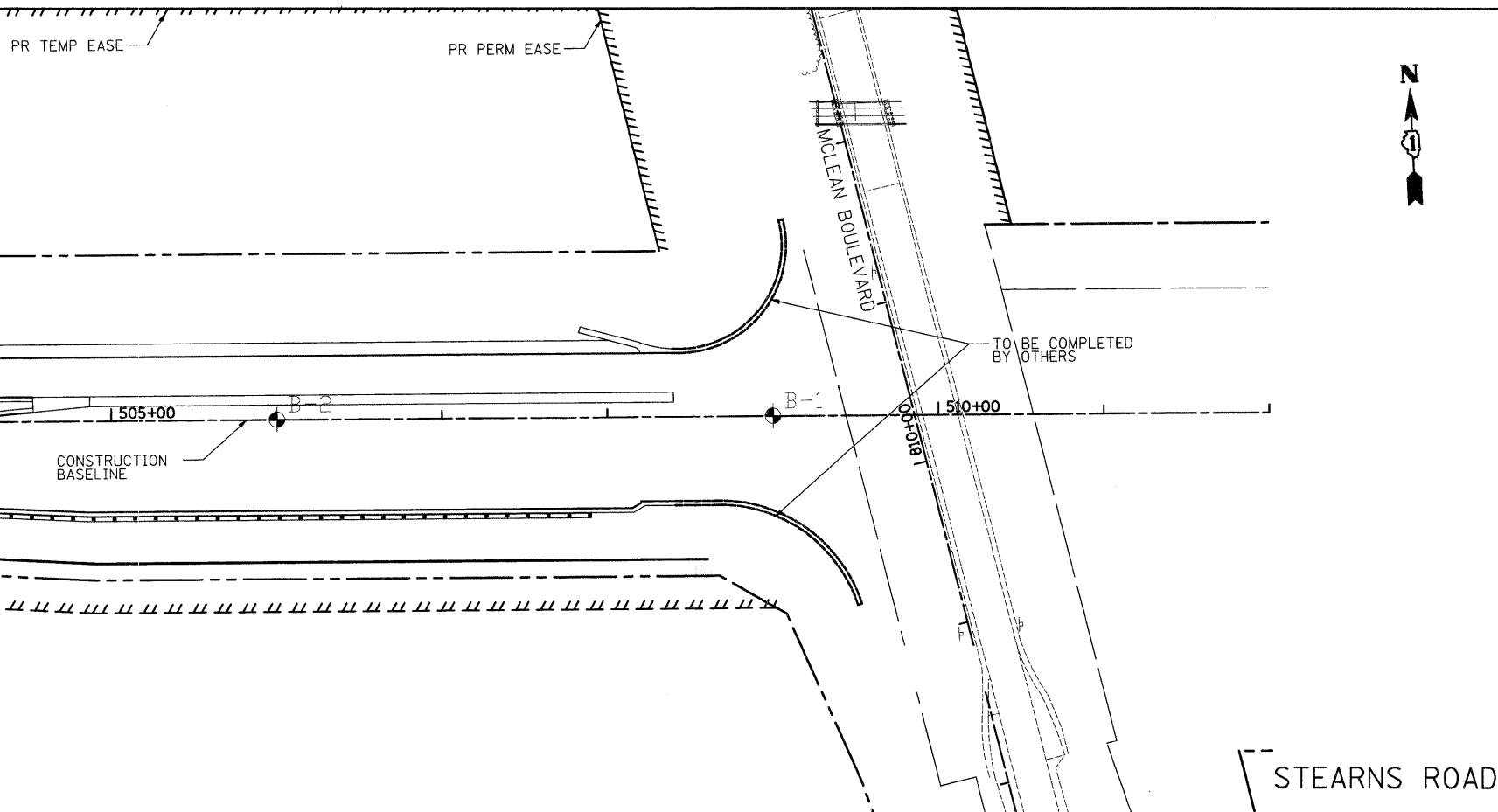


**SOIL PROFILE DRAWING**  
**MIDLAND STANDARD ENGINEERING & TESTING, INC.**  
**STEARNS ROAD BRIDGE CORRIDOR - STAGE 5**  
**SOUTH ELGIN, ILLINOIS**  
**MSET PROJECT NO. 88218**  
**JULY 2008**

**LEGEND**

◆	BORING NUMBER	BORING LOCATION
N	Standard Penetration Resistance, blows per foot	
Mc	Moisture Content	
Qu	Unconfined Compressive Strength, tons per square foot (lab)	
Qp	Unconfined Compressive Strength, tons per square foot (field)	
*	Sample tested for Classification	
▽	Water Level During Drilling	

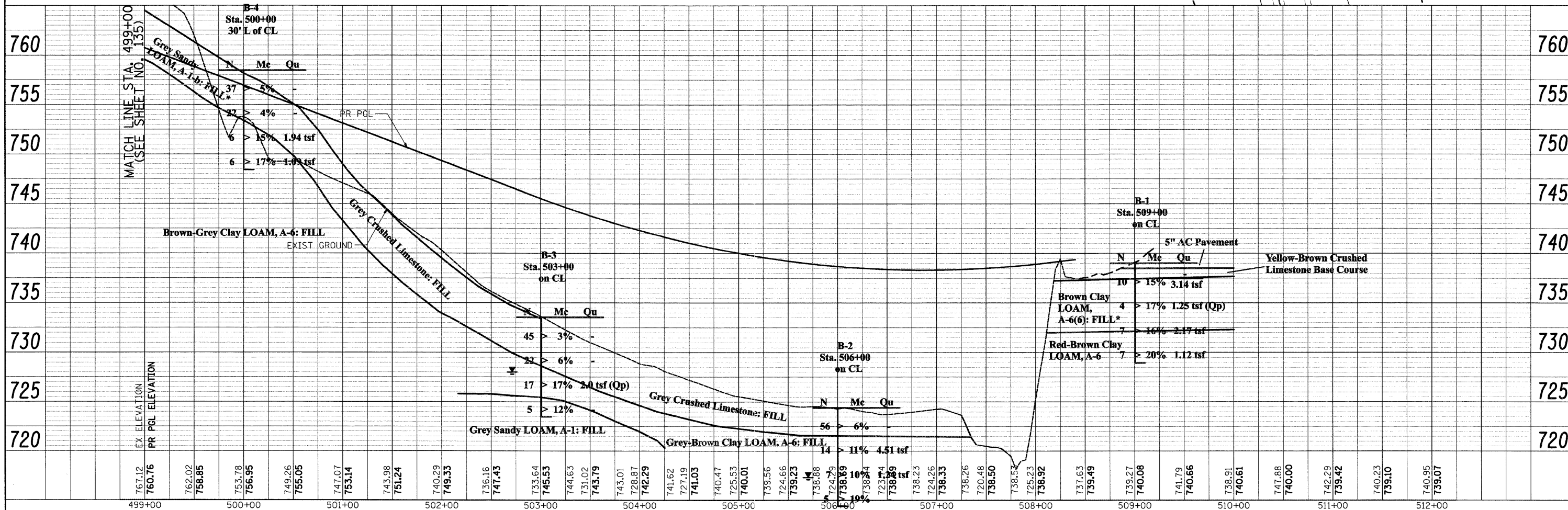


PLAN

DATE	
BY	
REVIEWED	
PLOTTED	
NOTED	
NO.	

PROFILE

DATE	
BY	
REVIEWED	
PLOTTED	
NOTED	
NO.	



FILE NAME =	USER NAME = jsm	DESIGNED - MSET	REVISED -	<b>KANE COUNTY DIVISION OF TRANSPORTATION</b>	<b>SOIL BORING LOCATION PLAN &amp; SOIL PROFILE</b>				F.A. RTE. 361	SECTION 06-00214-25-BR	COUNTY KANE	TOTAL SHEETS 220	SHEET NO. 136
		DRAWN - MSET	REVISED -		SCALE: 1"=50'				CONTRACT NO. 63076				
		CHECKED - MSET	REVISED -		SHEET NO. 7 OF 7 SHEETS				ILLINOIS FED. AID PROJECT				
		DATE - 3/30/09	REVISED -		STA. 499+00 TO STA. 508+40								