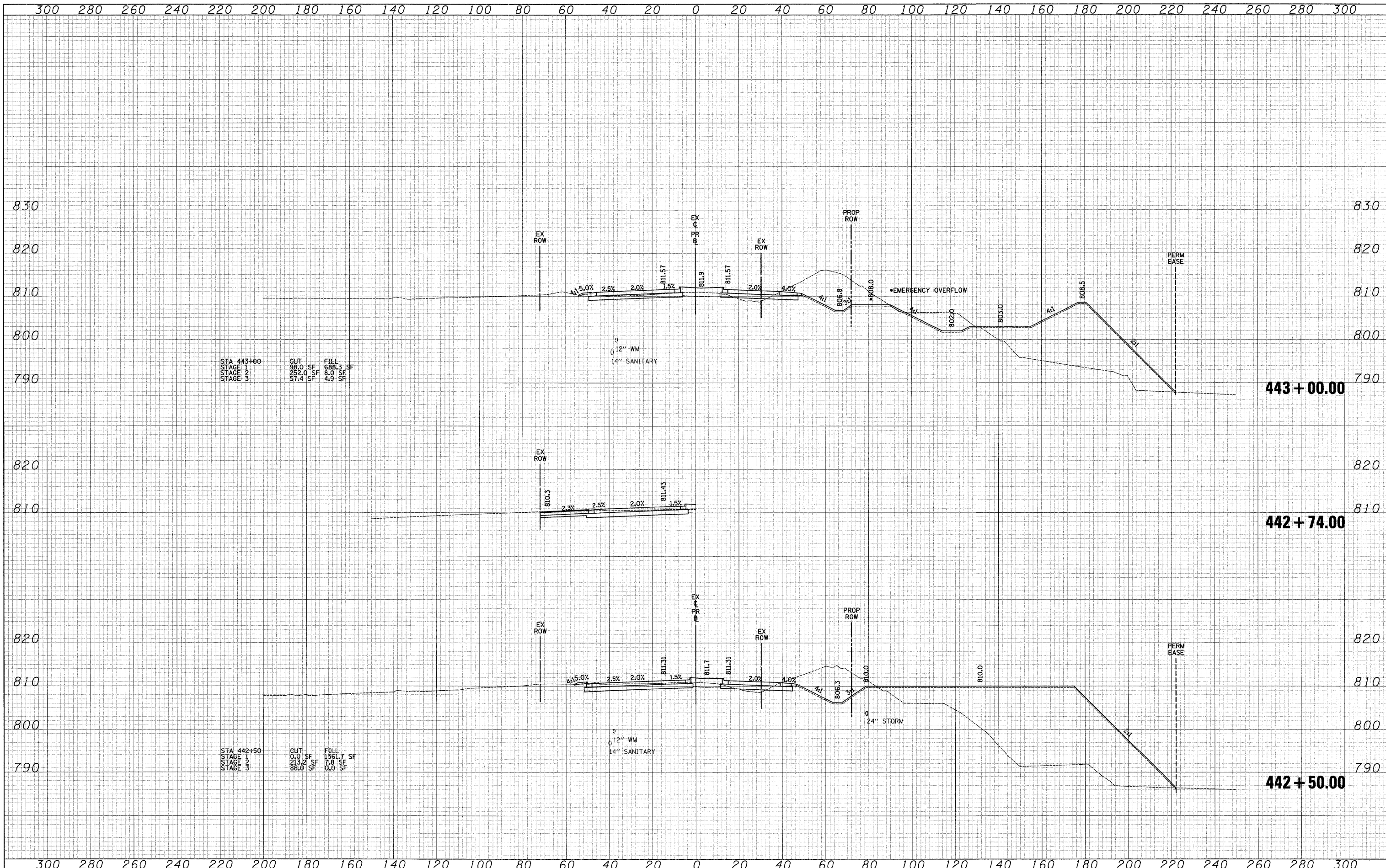


DATE	
BY	
SURVEYED	
PLOTTED	
NOTE BOOK	
AREAS CHECKED	

DATE	
BY	
SURVEYED	
PLOTTED	
NOTE BOOK	
AREAS CHECKED	



FILE NAME =

USER NAME = ead
 DESIGNED - JSM
 DRAWN - JSM
 CHECKED - DNM
 DATE - 3/30/09
 REVISED -
 REVISED -
 REVISED -
 REVISED -

**KANE COUNTY
 DEPARTMENT OF TRANSPORTATION**

CROSS SECTIONS - STEARNS ROAD
 SCALE: 1"=10'V/20'H SHEET NO. 6 OF 63 SHEETS STA. 442+50.00 TO STA. 443+00.00

F.A. RTE.	SECTION	COUNTY	TOTAL SHEETS	SHEET NO.
361	06-00214-25-BR	KANE	220	151
CONTRACT NO. 63076				

FED. ROAD DIST. NO. 1 ILLINOIS FED. AID PROJECT