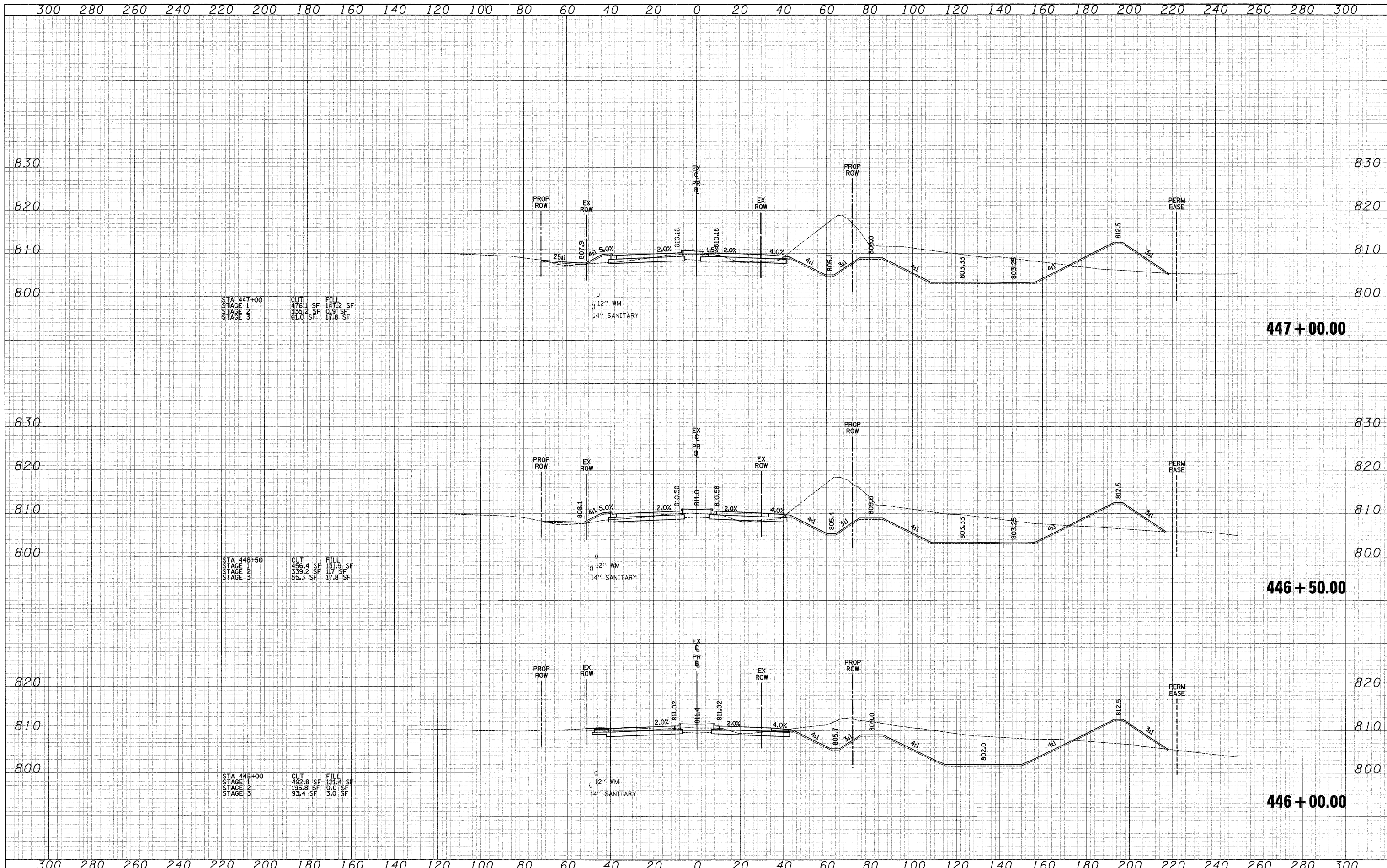


DATE	
BY	
SURVEYED	
PLOTTED	
NOTE BOOK	
AREAS CHECKED	

DATE	
BY	
ORIGINAL SURVEY	
NOTE BOOK	
AREAS CHECKED	



STA 447+00
 CUT 476.1 SF
 STAGE 1 135.2 SF
 STAGE 3 61.0 SF
 FILL 147.2 SF
 STAGE 1 0.8 SF
 STAGE 3 17.8 SF
 12" WM
 14" SANITARY

STA 446+50
 CUT 456.4 SF
 STAGE 1 139.2 SF
 STAGE 3 55.3 SF
 FILL 151.9 SF
 STAGE 1 0.0 SF
 STAGE 3 17.8 SF
 12" WM
 14" SANITARY

STA 446+00
 CUT 492.8 SF
 STAGE 1 135.8 SF
 STAGE 3 53.4 SF
 FILL 121.4 SF
 STAGE 1 0.0 SF
 STAGE 3 3.0 SF
 12" WM
 14" SANITARY

300 280 260 240 220 200 180 160 140 120 100 80 60 40 20 0 20 40 60 80 100 120 140 160 180 200 220 240 260 280 300



FILE NAME =
 USER NAME = ead
 DESIGNED - JSM
 DRAWN - JSM
 CHECKED - DNM
 DATE - 3/30/09
 REVISED -
 REVISED -
 REVISED -
 REVISED -

**KANE COUNTY
 DEPARTMENT OF TRANSPORTATION**

CROSS SECTIONS - STEARNS ROAD
 SCALE: 1"=10'V/20'H SHEET NO. 9 OF 63 SHEETS STA. 446+00.00 TO STA. 447+00.00

F.A. RTE. 361	SECTION 06-00214-25-BR	COUNTY KANE	TOTAL SHEETS 220	SHEET NO. 154
CONTRACT NO. 63076				
FED. ROAD DIST. NO. 1 ILLINOIS FED. AID PROJECT				