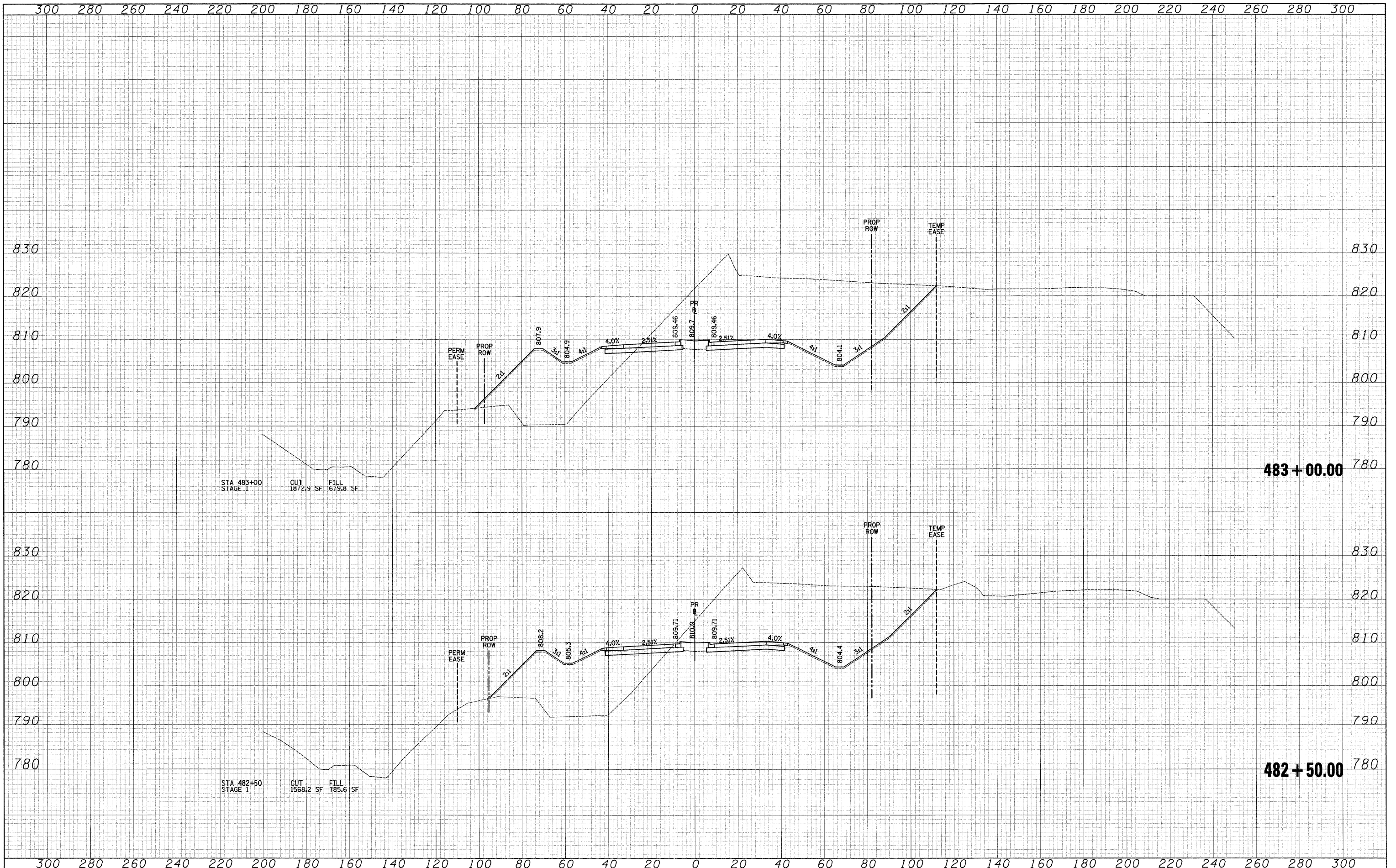


DATE	
BY	
SURVEYED	
PLOTTED	
NOTE BOOK	
AREAS CHECKED	

DATE	
BY	
SURVEYED	
PLOTTED	
NOTE BOOK	
AREAS CHECKED	



FILE NAME =

USER NAME = ead

DESIGNED - JSM

DRAWN - JSM

CHECKED - DNM

DATE - 3/30/09

REVISIONS:

REVISIONS	
REVISIONS	
REVISIONS	
REVISIONS	

KANE COUNTY DEPARTMENT OF TRANSPORTATION

CROSS SECTIONS - STEARNS ROAD

SCALE: 1"=10'V/20'H SHEET NO. 38 OF 63 SHEETS STA. 482+50.00 TO STA. 483+00.00

F.A. RTE. 361	SECTION 06-00214-25-BR	COUNTY KANE	TOTAL SHEETS 220	SHEET NO. 183
CONTRACT NO. 63076				
FED. ROAD DIST. NO. 1 ILLINOIS FED. AID PROJECT				