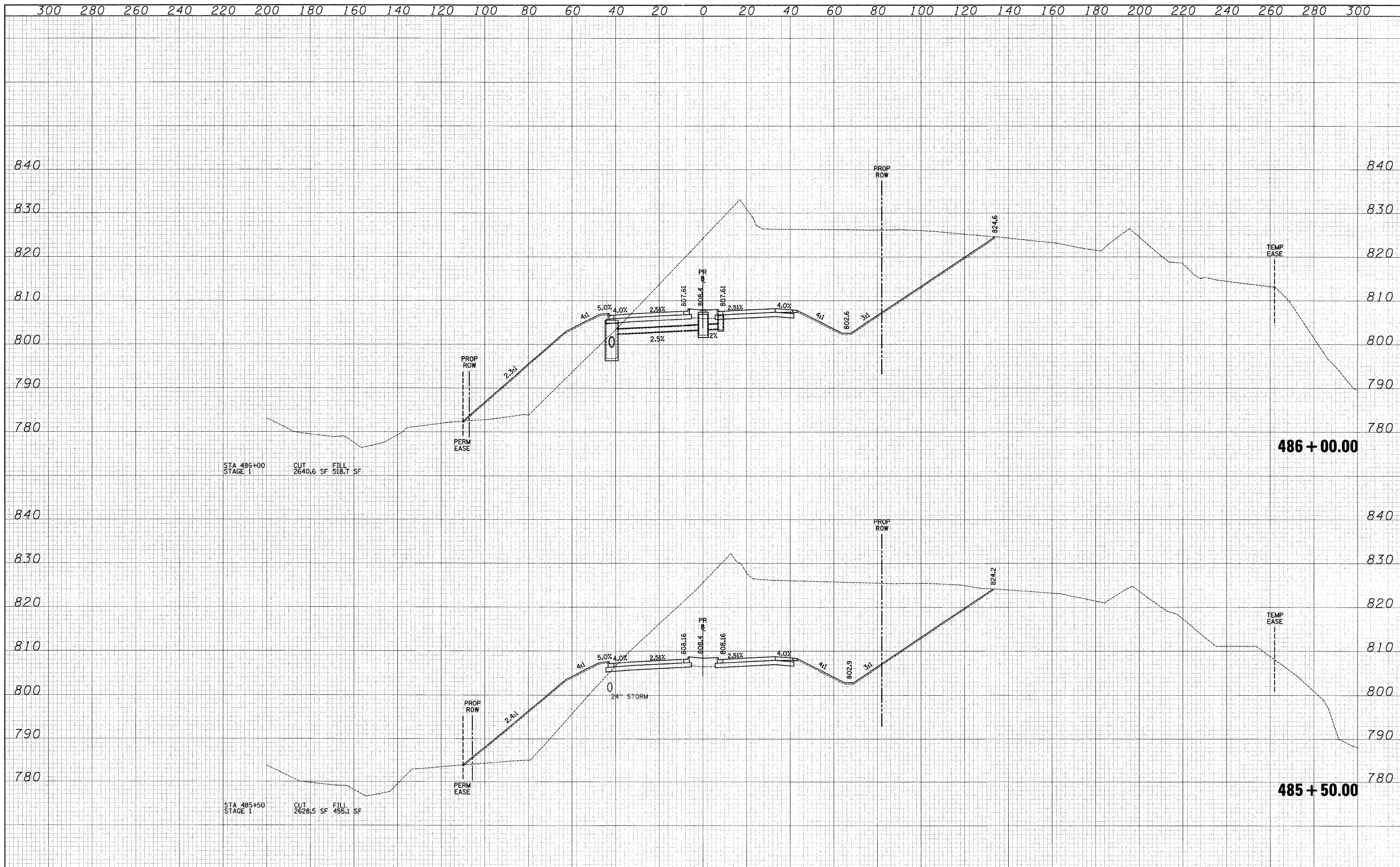


DATE	
BY	
SURVEYED	
PLOTTED	
TEMPLATE	
NOTE BOOK	
AREAS CHECKED	
NO.	

DATE	
BY	
SURVEYED	
PLOTTED	
TEMPLATE	
NOTE BOOK	
AREAS CHECKED	
NO.	



FILE NAME =	USER NAME = eed	DESIGNED - JSM	REVISED -	KANE COUNTY DEPARTMENT OF TRANSPORTATION	CROSS SECTIONS - STEARNS ROAD	F.A. RTE.	SECTION	COUNTY	TOTAL SHEETS	SHEET NO.	
		DRAWN - JSM	REVISED -			361	06-00214-25-BR	KANE	220	186	
		CHECKED - DNM	REVISED -			CONTRACT NO. 63076					
		DATE - 3/30/09	REVISED -			SCALE: 1"=10'V/20'H SHEET NO. 41 OF 63 SHEETS STA. 485+50.00 TO STA. 486+00.00 FED. ROAD DIST. NO. 1 ILLINOIS FED. AID PROJECT					