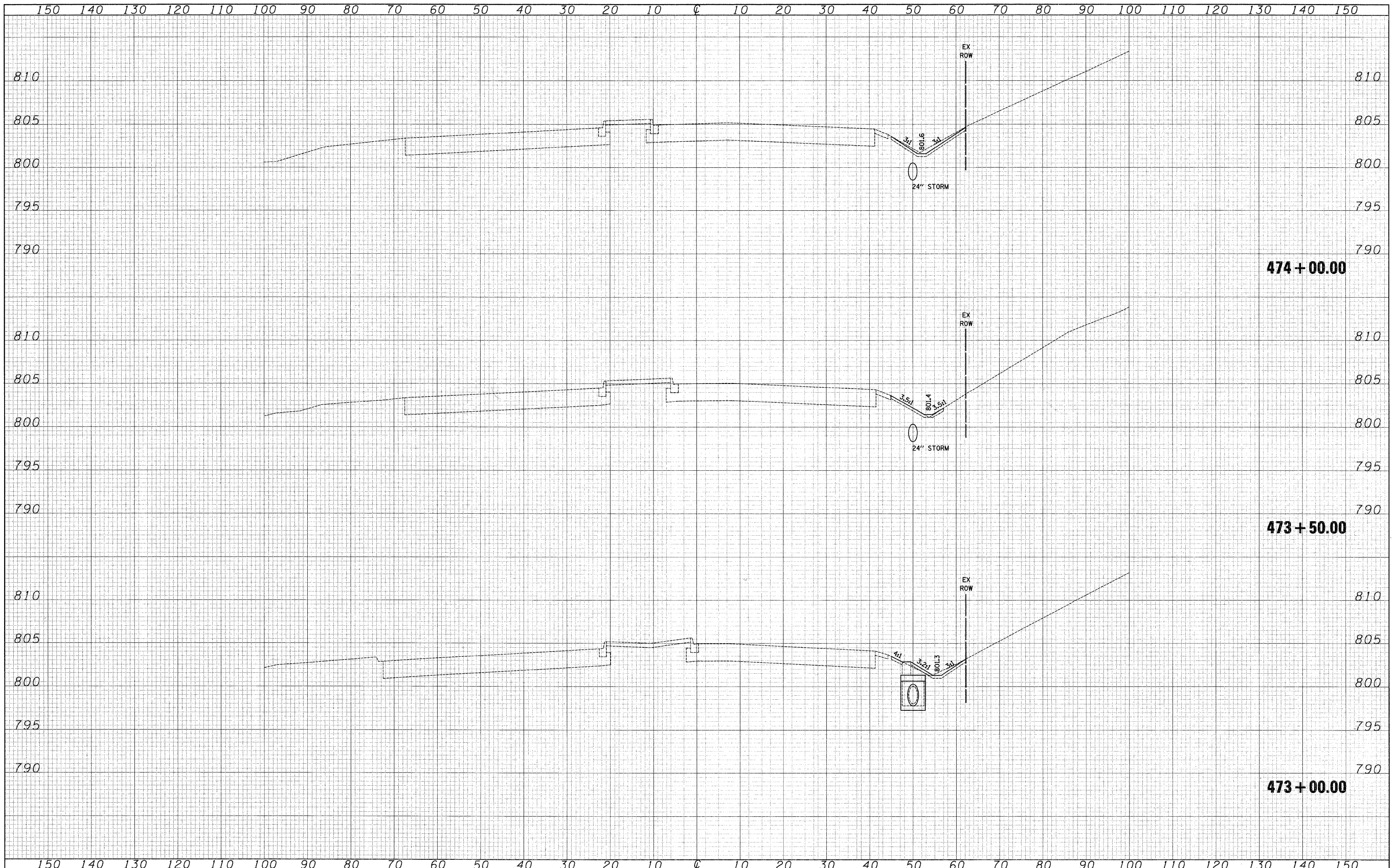


DATE	
BY	
SURVEYED	
PLOTTED	
TEMPLATE	
NOTE BOOK	
AREAS CHECKED	
NO.	

DATE	
BY	
SURVEYED	
PLOTTED	
TEMPLATE	
NOTE BOOK	
AREAS CHECKED	
NO.	



FILE NAME =	USER NAME = jsm	DESIGNED - MJP	REVISED -	KANE COUNTY DEPARTMENT OF TRANSPORTATION	CROSS SECTIONS - RANDALL ROAD	F.A. RTE. 361	SECTION 06-00214-25-BR	COUNTY KANE	TOTAL SHEETS 220	SHEET NO. 217		
	PLOT SCALE = 10.0000' / 1" IN.	DRAWN - MJP	REVISED -			SCALE: 1"=5'V/10'H SHEET NO. 4 OF 7 SHEETS STA. 473+00.00 TO STA. 474+00.00		CONTRACT NO. 63076				
	PLOT DATE = 3/27/2009	CHECKED - DNM	REVISED -			FED. ROAD DIST. NO. 1 ILLINOIS FED. AID PROJECT						
		DATE - 3/30/09	REVISED -									