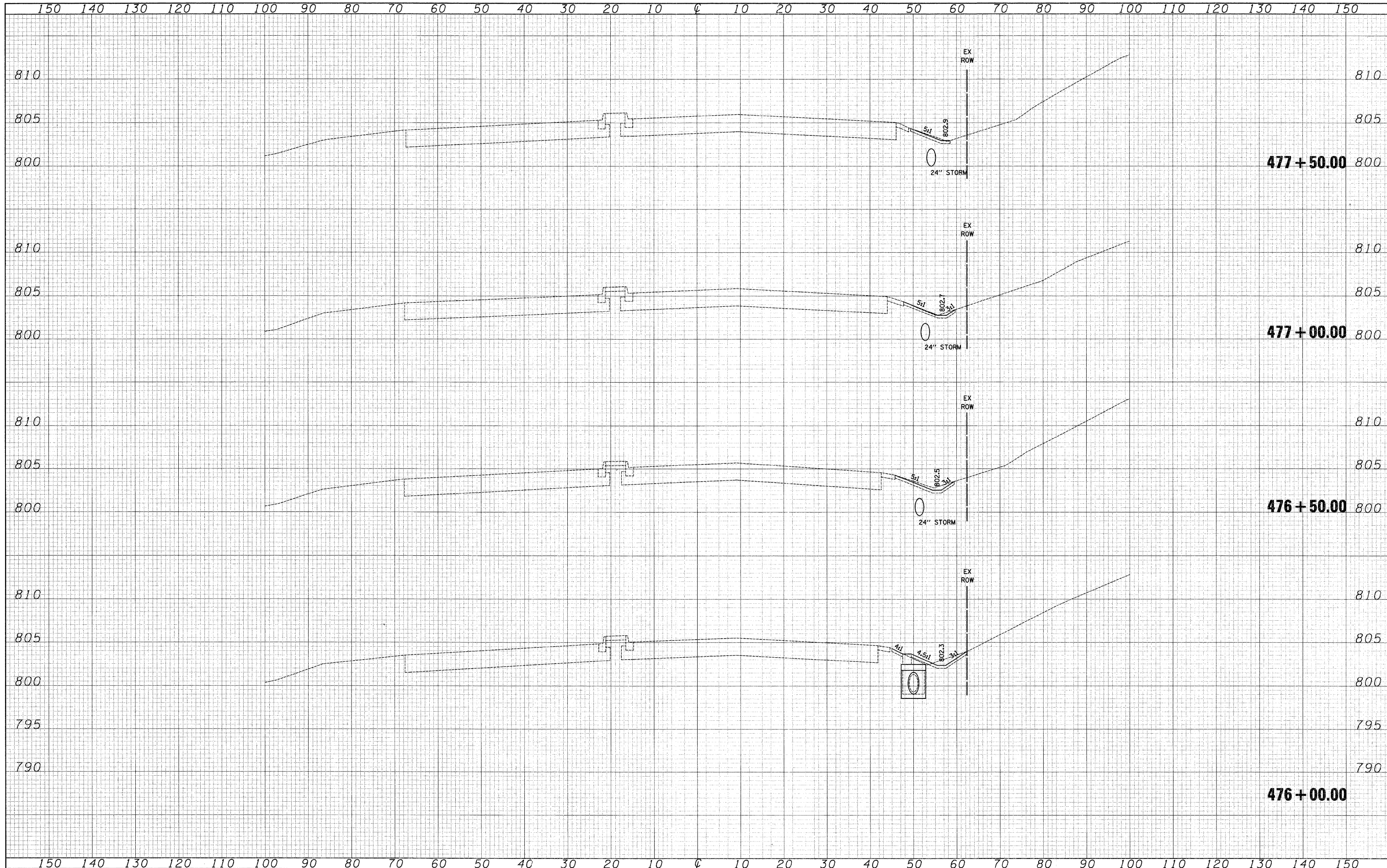


DATE	BY
SURVEYED	PLOTTED
NOTE BOOK	TEMP. AREAS
NO.	CHECKED

DATE	BY
SURVEYED	PLOTTED
NOTE BOOK	TEMP. AREAS
NO.	CHECKED



FILE NAME =

USER NAME = jsm
 DESIGNED - MJP
 DRAWN - MJP
 CHECKED - DNM
 DATE - 3/30/09

REVISED -
 REVISED -
 REVISED -
 REVISED -

**KANE COUNTY
 DEPARTMENT OF TRANSPORTATION**

CROSS SECTIONS - RANDALL ROAD
 SCALE: 1"=5'-V/10'-H SHEET NO. 6 OF 7 SHEETS STA. 476+00.00 TO STA. 477+50.00

F.A. RTE.	SECTION	COUNTY	TOTAL SHEETS	SHEET NO.
361	06-00214-25-BR	KANE	220	219
CONTRACT NO. 63076				
FED. ROAD DIST. NO. 1 ILLINOIS FED. AID PROJECT				