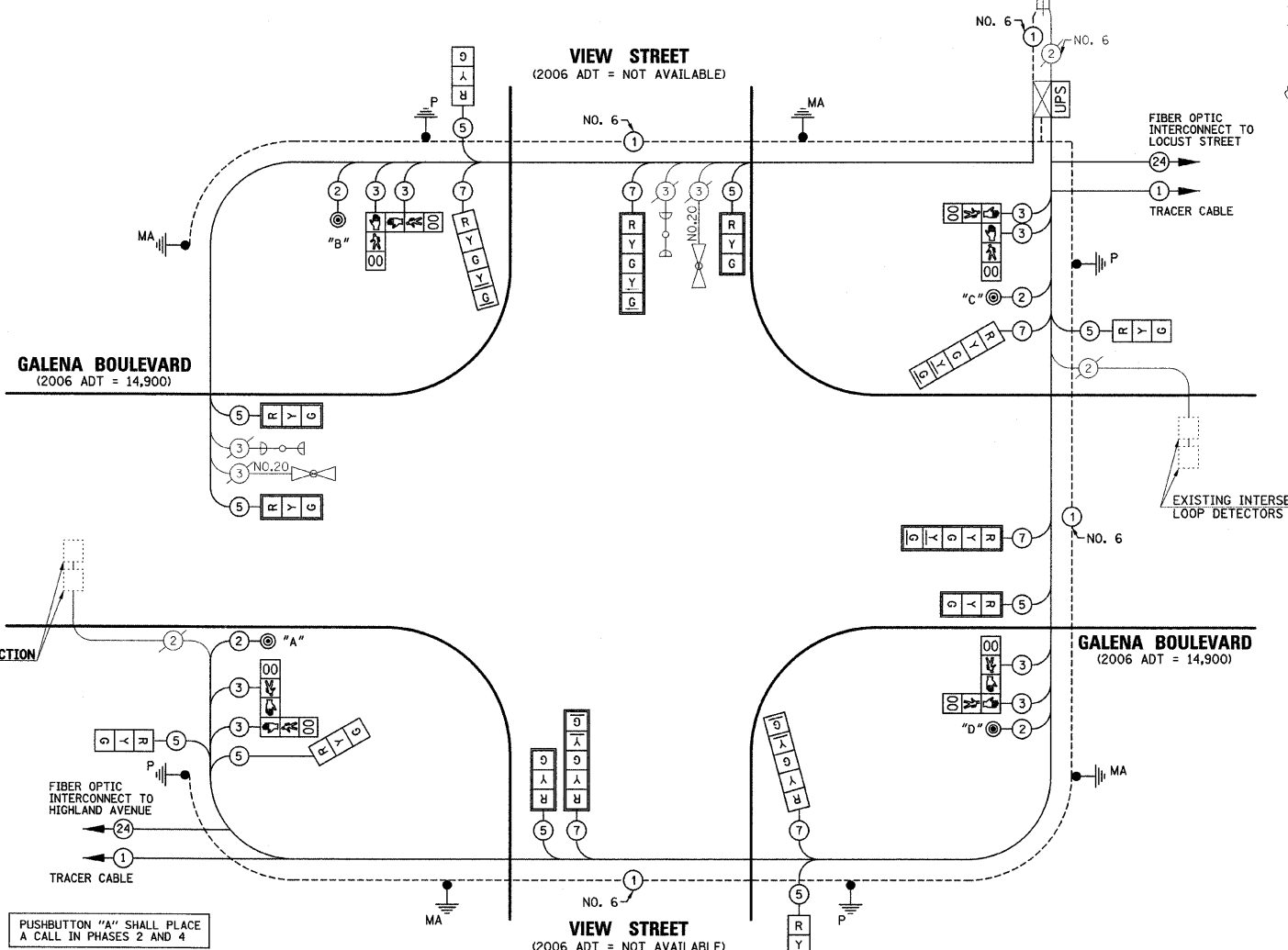
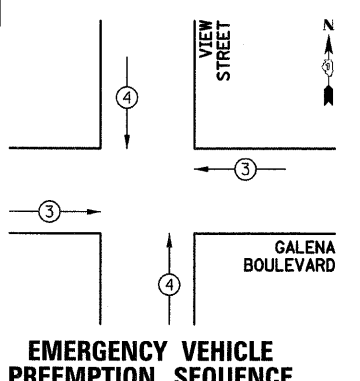


CABLE PLAN LEGEND

EXISTING	PROPOSED	DESCRIPTION
		8" (200mm) TRAFFIC SIGNAL SECTION
		12" (300mm) TRAFFIC SIGNAL SECTION
		12" (300mm) PEDESTRIAN SIGNAL SECTION
		12" (300mm) PEDESTRIAN SIGNAL SECTION
		CONTROLLER CABINET
		SERVICE INSTALLATION
		TELEPHONE INSTALLATION
		VEHICLE DETECTOR, INDUCTION LOOP
		MAGNETIC DETECTOR
		EMERGENCY VEHICLE LIGHT DETECTOR
		CONFIRMATION BEACON
		PUSHBUTTON DETECTOR
		LUMINAIRE
		DENOTES NUMBER OF CONDUCTORS. ALL CABLE NO. 14 EXCEPT AS INDICATED. ALL LOOP DETECTOR CABLE TO BE SHIELDED.
		GROUND CABLE IN CONDUIT NO. 6 SOLID COPPER (GREEN)
		FIBER OPTIC CABLE IN CONDUIT NO. 62.5/125 2-MM12F SMI2F
		SIGNAL FACE WITH BACKPLATE. "P" INDICATES PROGRAMMED HEAD.
		RAILROAD CONTROL CABINET
		ILLUMINATED SIGN "NO LEFT TURN"
		ILLUMINATED SIGN "NO RIGHT TURN"
		GROUND ROD AT HANDHOLE (H), DOUBLE HANDHOLE (H), OR CONTROLLER (C)
		GROUND ROD AT POST (P) OR MAST ARM POLE (MA)
		GROUND ROD AT ELECTRIC SERVICE INSTALLATION
		UNINTERRUPTIBLE POWER SUPPLY
		VIDEO DETECTION CAMERA



PUSHBUTTON "A" SHALL PLACE A CALL IN PHASES 2 AND 4
 PUSHBUTTON "B" SHALL PLACE A CALL IN PHASES 4 AND 6
 PUSHBUTTON "C" SHALL PLACE A CALL IN PHASES 6 AND 8
 PUSHBUTTON "D" SHALL PLACE A CALL IN PHASES 2 AND 8



PROPOSED EMERGENCY VEHICLE PREEMPTORS

PROPOSED EMERGENCY VEHICLE PREEMPTORS	3	4
MOVEMENT	←	↑

FOUNDATION (DEPTH)	FT. (m)	CABLE SLACK	FT. (m)	VERTICAL	FT. (m)
TYPE A - POST	4 (1.2)	HANDHOLE	6.5 (2.0)	ALL FOUNDATIONS	3.5 (1.0)
C - CONTROLLER	4 (1.2)	DOUBLE HANDHOLE	13 (4.0)	MAST ARM (L) POLE	20'-H-2=
D - CONTROLLER	4 (1.2)	SIGNAL POST	2 (1.0)		(6m-H-0.6m)
E - M.A. LENGTH		CONTROLLER CAB.	1 (0.5)	BRACKET MOUNTED	13 (4.0)
<30'	30" (900mm)	FIBER OPTIC	13 (4.0)	PED. PUSHBUTTON	4 (1.2)
<40'	30" (750mm)	ELECTRIC SERVICE	1 (0.5)	ELECTRIC SERVICE	13.5 (4.1)
<40'	36" (900mm)	GROUND CABLE	1 (0.5)	SERVICE TO GROUND	13.5 (4.1)
<50'	36" (900mm)			POST MOUNTED	6 (1.8)
≥50'	36" (900mm)				

I.D.O.T TRAFFIC SIGNAL INSTALLATION ELECTRICAL SERVICE REQUIREMENTS

TYPE	NO. LAMPS	WATTAGE		% OPERATION	TOTAL WATTAGE
		INCAND.	LED		
SIGNAL (RED)	16		17	0.50	136
(YELLOW)	16		25	0.25	100
(GREEN)	16		15	0.25	60
ARROW	12		12	0.10	14.4
PED. SIGNAL	8		25	1.00	200
CONTROLLER	1		100	1.00	100
UPS	1		25	1.00	25.0
TOTAL =					635.4

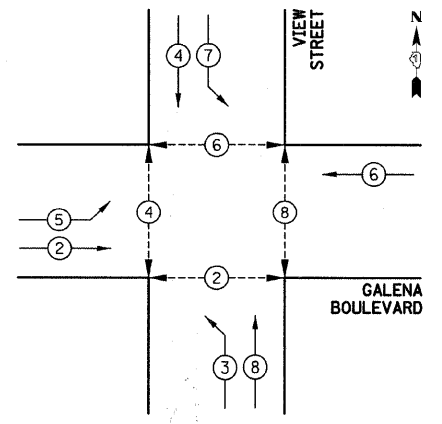
ENERGY COSTS TO: CITY OF AURORA
 44 E. DOWNER PLACE
 AURORA, ILLINOIS 60507-2067

ENERGY SUPPLY CONTACT: MARK SCHERIBEL
 PHONE: (630) 723-2128
 COMPANY: COMMONWEALTH EDISON

SCHEDULE OF QUANTITIES

PAY ITEM DESCRIPTION	UNIT	VIEW STREET
SIGN PANEL - TYPE 1	SQ FT	28.5
CONDUIT IN TRENCH, 2 1/2" DIA., GALVANIZED STEEL	FOOT	58
CONDUIT IN TRENCH, 4" DIA., GALVANIZED STEEL	FOOT	65
CONDUIT PUSHED, 4" DIA., GALVANIZED STEEL	FOOT	156
TRENCH AND BACKFILL FOR ELECTRICAL WORK	FOOT	123
MAINTENANCE OF EXISTING TRAFFIC SIGNAL INSTALLATION	EACH	1
ELECTRIC CABLE IN CONDUIT, SIGNAL NO. 14 2C	FOOT	544.5
ELECTRIC CABLE IN CONDUIT, SIGNAL NO. 14 3C	FOOT	1145
ELECTRIC CABLE IN CONDUIT, SIGNAL NO. 14 6C	FOOT	1589.5
ELECTRIC CABLE IN CONDUIT, SIGNAL NO. 14 7C	FOOT	850.5
TRAFFIC SIGNAL POST, GALVANIZED STEEL 14 FT.	EACH	1
TRAFFIC SIGNAL POST, GALVANIZED STEEL 16 FT.	EACH	3
STEEL MAST ARM ASSEMBLY AND POLE, 22 FT.	EACH	2
STEEL MAST ARM ASSEMBLY AND POLE, 26 FT.	EACH	1
STEEL MAST ARM ASSEMBLY AND POLE, 30 FT.	EACH	1
CONCRETE FOUNDATION, TYPE A	FOOT	16
CONCRETE FOUNDATION, TYPE E 30-INCH DIAMETER	FOOT	43.5
DRILL EXISTING HANDHOLE	EACH	20
SIGNAL HEAD, LED, 1-FACE, 3-SECTION, MAST ARM MOUNTED	EACH	5
SIGNAL HEAD, LED, 1-FACE, 5-SECTION, MAST ARM MOUNTED	EACH	3
SIGNAL HEAD, LED, 2-FACE, 3-SECTION, BRACKET MOUNTED	EACH	1
SIGNAL HEAD, LED, 2-FACE, 1-3 SECTION, 1-5 SECTION, BRACKET MOUNTED	EACH	3
PEDESTRIAN SIGNAL HEAD, LED, 2-FACE, BRACKET MOUNTED WITH COUNTDOWN TIMER	EACH	4
TRAFFIC SIGNAL BACKPLATE, LOUVERED, ALUMINUM	EACH	8
PEDESTRIAN PUSH-BUTTON	EACH	4
REMOVE ELECTRIC CABLE FROM CONDUIT	FOOT	1583.5
REMOVE EXISTING TRAFFIC SIGNAL EQUIPMENT	EACH	1
REMOVE EXISTING CONCRETE FOUNDATION	EACH	8
PAINT NEW MAST ARM POLE, UNDER 40 FEET	EACH	4
PAINT TRAFFIC SIGNAL POST	EACH	4
UNINTERRUPTIBLE POWER SUPPLY	EACH	1
ELECTRIC CABLE IN CONDUIT, GROUNDING, NO. 6 1C	FOOT	359
RELOCATE LIGHT DETECTOR	EACH	2
GROUND EXISTING HANDHOLE FRAME AND COVER	EACH	7

CONTROLLER SEQUENCE



PHASE DESIGNATION DIAGRAM

CONTROLLER SEQUENCE LEGEND

	DUAL ENTRY PHASE
	SINGLE ENTRY PHASE
	OVERLAP
	NUMBER REFERRING TO ASSOCIATED PHASE
	PEDESTRIAN PHASE

DATE	BY	DESCRIPTION