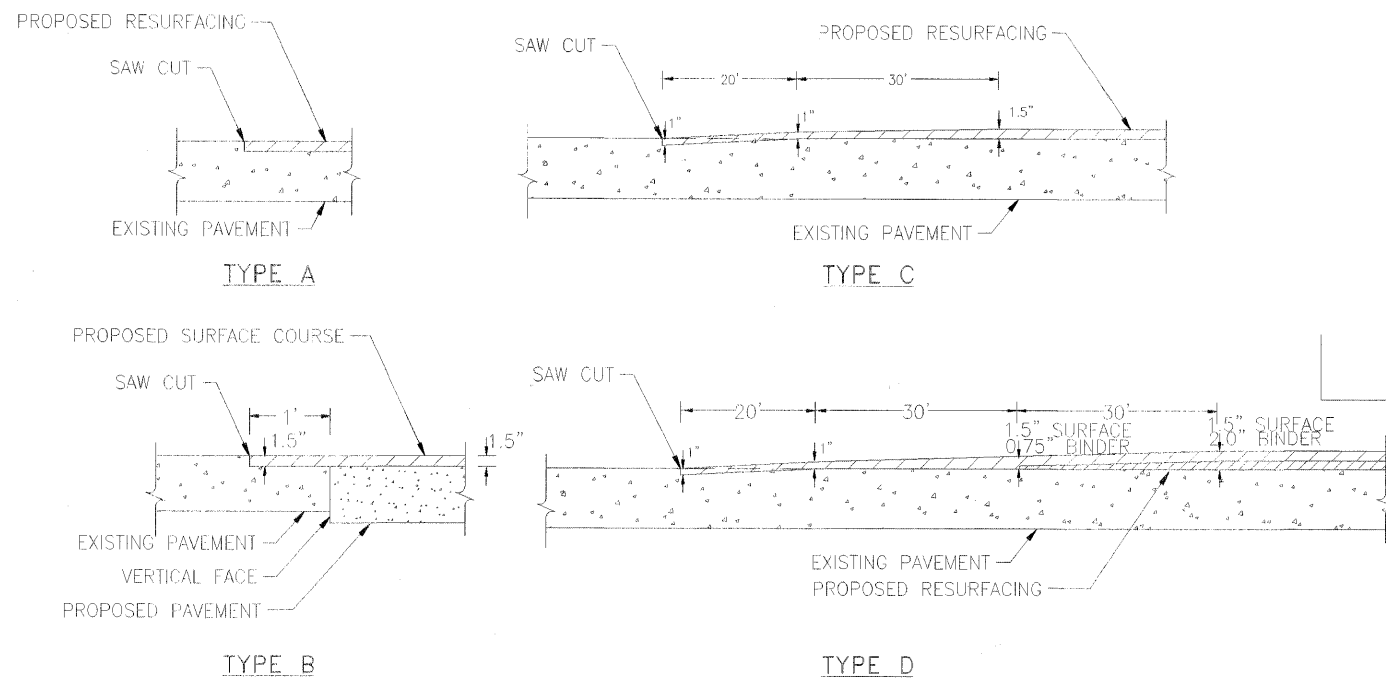


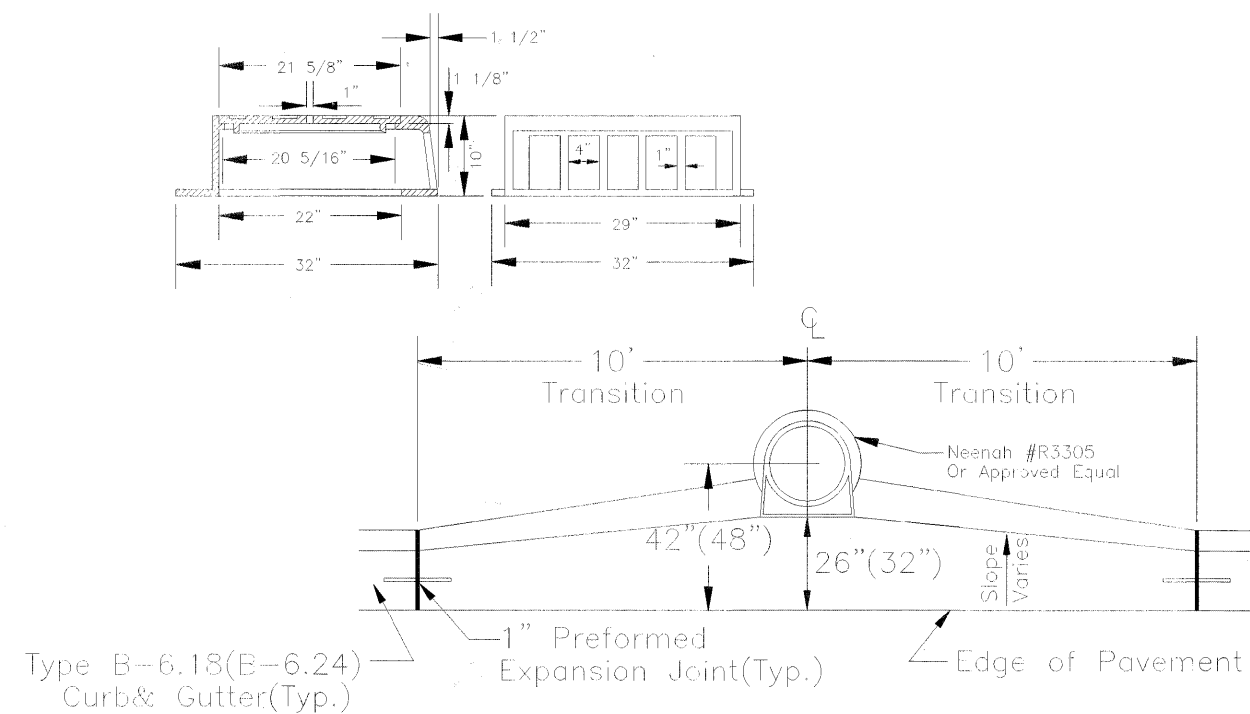
## BUTT JOINT DETAILS



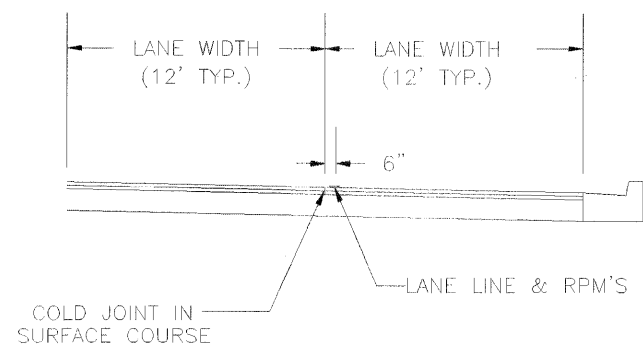
**NOTES**  
 SAW CUT SHALL NOT BE PAID FOR SEPARATELY  
 BUT SHALL BE INCLUDED IN THE COST FOR  
 BITUMINOUS SURFACE REMOVAL OR PAVEMENT REMOVAL

TOM H. 03/09/99  
 //DOTSERVER/ENGINEERING/STANDARD/DETAILS/DIV1/TRA.DWG

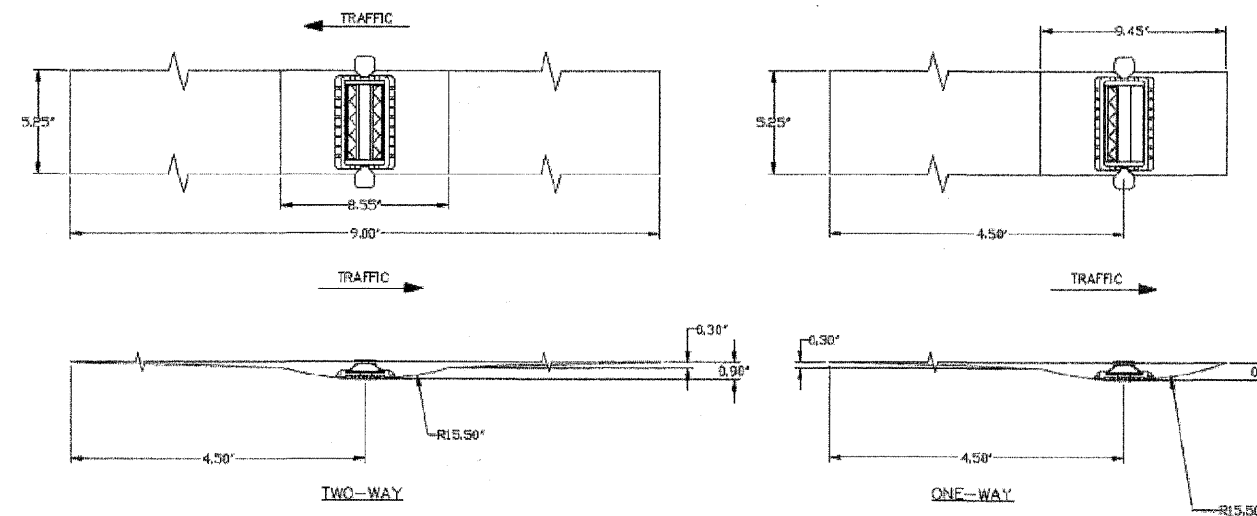
## SAG FRAME & GRATE DETAIL



## PAVEMENT MARKING LOCATION



## RECESSED REFLECTIVE PAVEMENT MARKERS



FILE NAME *	USER NAME *	DESIGNED - CRC	REVISED -	<b>STATE OF ILLINOIS DEPARTMENT OF TRANSPORTATION</b>	<b>DIEHL ROAD LAPP IMPROVEMENTS DUPAGE COUNTY DIVISION OF TRANSPORTATION DETAILS</b>	CO. HWY.	SECTION	COUNTY	TOTAL SHEETS	SHEET NO.	
#FILE#		DRAWN - CRC	REVISED -			53	08-00263-01SP	DUPAGE	16	16	
		CHECKED - JLC	REVISED -			CONTRACT NO: 63122					
		DATE - 01/02/2009	REVISED -			ILLINOIS FED. AID PROJECT					
					SCALE: 1" = 100'	STA. TO STA.					