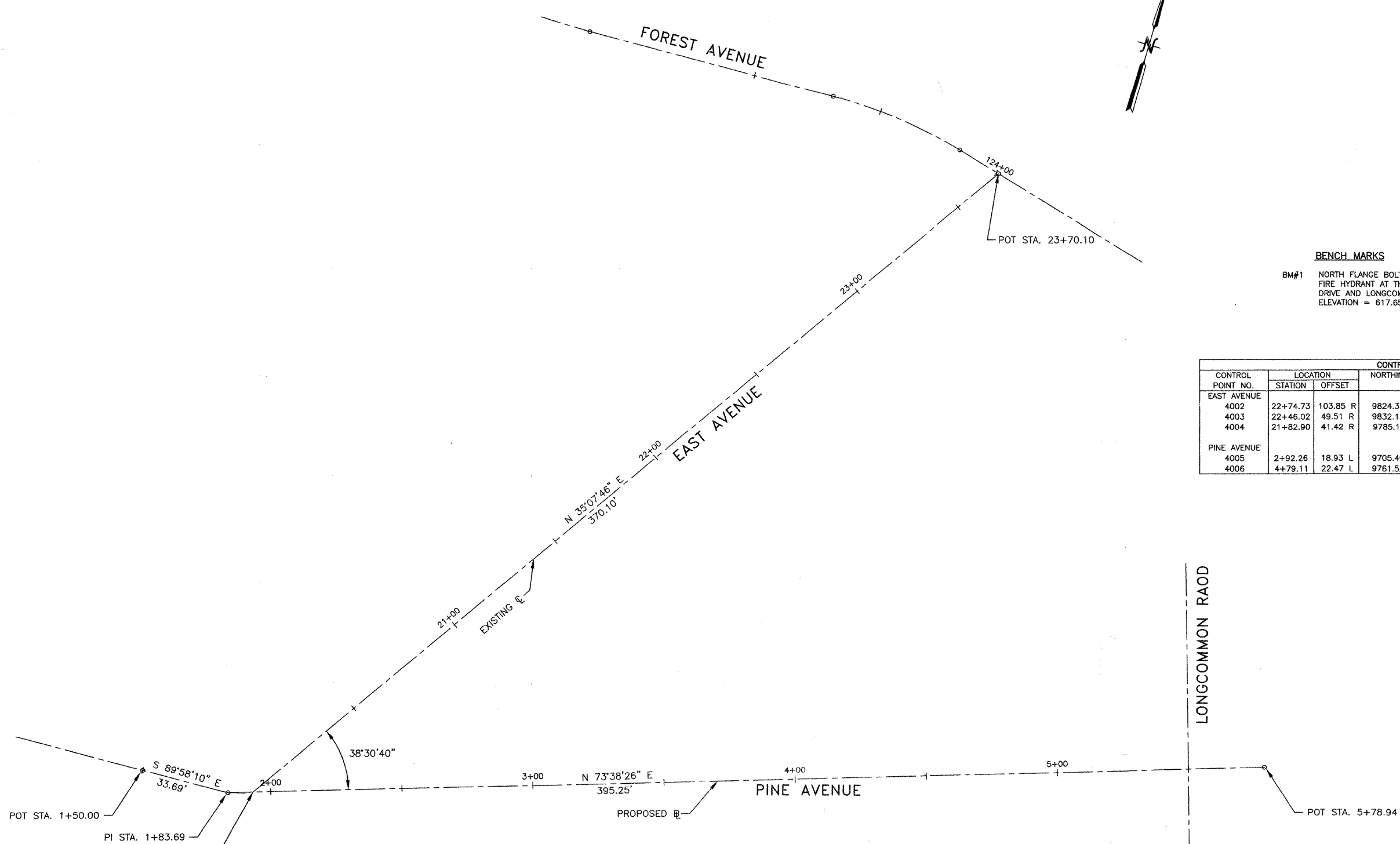


FAU. RTE.	SECTION	COUNTY	TOTAL SHEETS	SHEET NO.
1472 & 3569	06-00073-00-LS	COOK	24	7
STA.	TO STA.			
FED. ROAD DIST. NO.	ILLINOIS	FED. AID PROJECT		
CONTRACT NO. 63133				



BENCH MARKS
 BM#1 NORTH FLANGE BOLT ON FIRE HYDRANT.
 FIRE HYDRANT AT THE INTERSECTION OF WOODSIDE
 DRIVE AND LONGCOMMON ROAD.
 ELEVATION = 617.65

CONTROL POINT NO.	LOCATION		NORTHING	EASTING	ELEV	DESCRIPTION
	STATION	OFFSET				
EAST AVENUE						
4002	22+74.73	103.85 R	9824.3726	9997.6200	617.46	CUT CROSS
4003	22+46.02	49.51 R	9832.1592	9836.6554	617.10	CUT CROSS
4004	21+82.90	41.42 R	9785.1911	9893.7285	616.60	PK NAIL
PINE AVENUE						
4005	2+92.26	18.93 L	9705.4997	9844.2931	616.70	CUT CROSS
4006	4+79.11	22.47 L	9761.5254	10022.5763	616.50	CUT CROSS

STA. 1+93.23 (PINE AVE.)=
 STA. 20+00.00 (EAST AVE.)

CURVE NO.	Δ	D _a	T	R	L	E	POT/PI STATION	POT/PI COORDINATES		PC STATION	PC COORDINATES		PT STATION	PT COORDINATES	
								NORTHING	EASTING		NORTHING	EASTING		NORTHING	EASTING
PINE AVENUE															
							1+50.00	9656.7689	9711.7595						
							1+83.89	9656.7510	9745.4454						
							5+78.94	9768.0796	10124.6959						
EAST AVENUE															
							20+00.00	9659.4390	9754.6023						
							23+37.10	9962.1310	9967.5698						

REVISIONS	
NAME	DATE

ILLINOIS DEPARTMENT OF TRANSPORTATION
 FAU ROUTES 1472 & 3569
 VILLAGE OF RIVERSIDE
 RAILWAY/WATER TOWER CAMPUS RESTORATION PROJECT

ALIGNMENT AND BENCH MARKS

SCALE: 1"=20'
 DATE: 12/01/08

DRAWN BY: SMP
 CHECKED BY: BDH