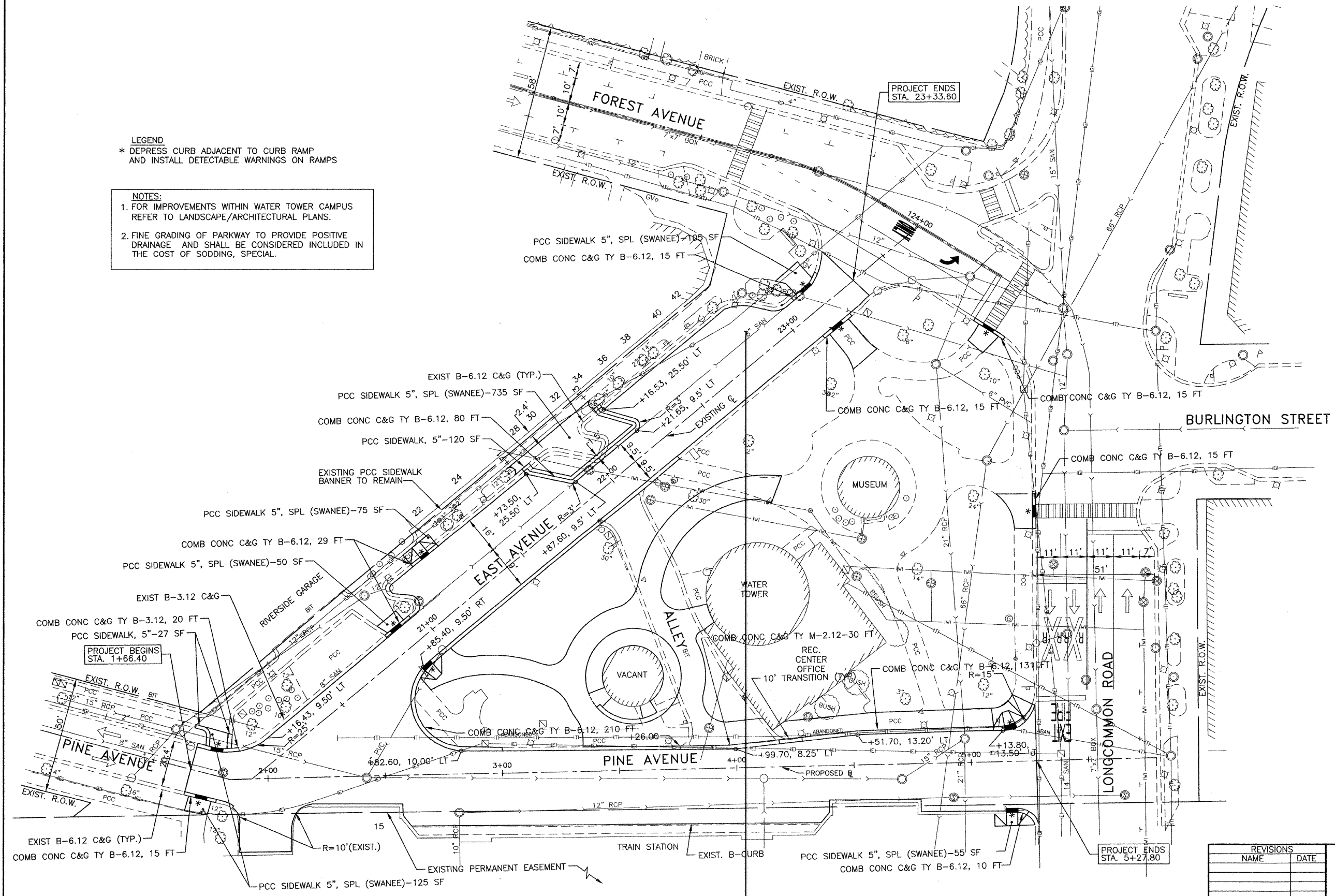


LEGEND
 * DEPRESS CURB ADJACENT TO CURB RAMP
 AND INSTALL DETECTABLE WARNINGS ON RAMPS

NOTES:
 1. FOR IMPROVEMENTS WITHIN WATER TOWER CAMPUS
 REFER TO LANDSCAPE/ARCHITECTURAL PLANS.
 2. FINE GRADING OF PARKWAY TO PROVIDE POSITIVE
 DRAINAGE AND SHALL BE CONSIDERED INCLUDED IN
 THE COST OF SODDING, SPECIAL.



HMA SC G N50 (2 1/2"), 350 TONS
 LEV BIND MM N50 (3/4"), 105 TONS

REVISIONS	
NAME	DATE

ILLINOIS DEPARTMENT OF TRANSPORTATION
 FAU ROUTES 1472 & 3569
 VILLAGE OF RIVERSIDE
 RAILWAY/WATER TOWER CAMPUS RESTORATION PROJECT

GEOMETRIC PLAN

SCALE: 1"=20'
 DATE: 12/01/08

DRAWN BY: SMP
 CHECKED BY: BDH