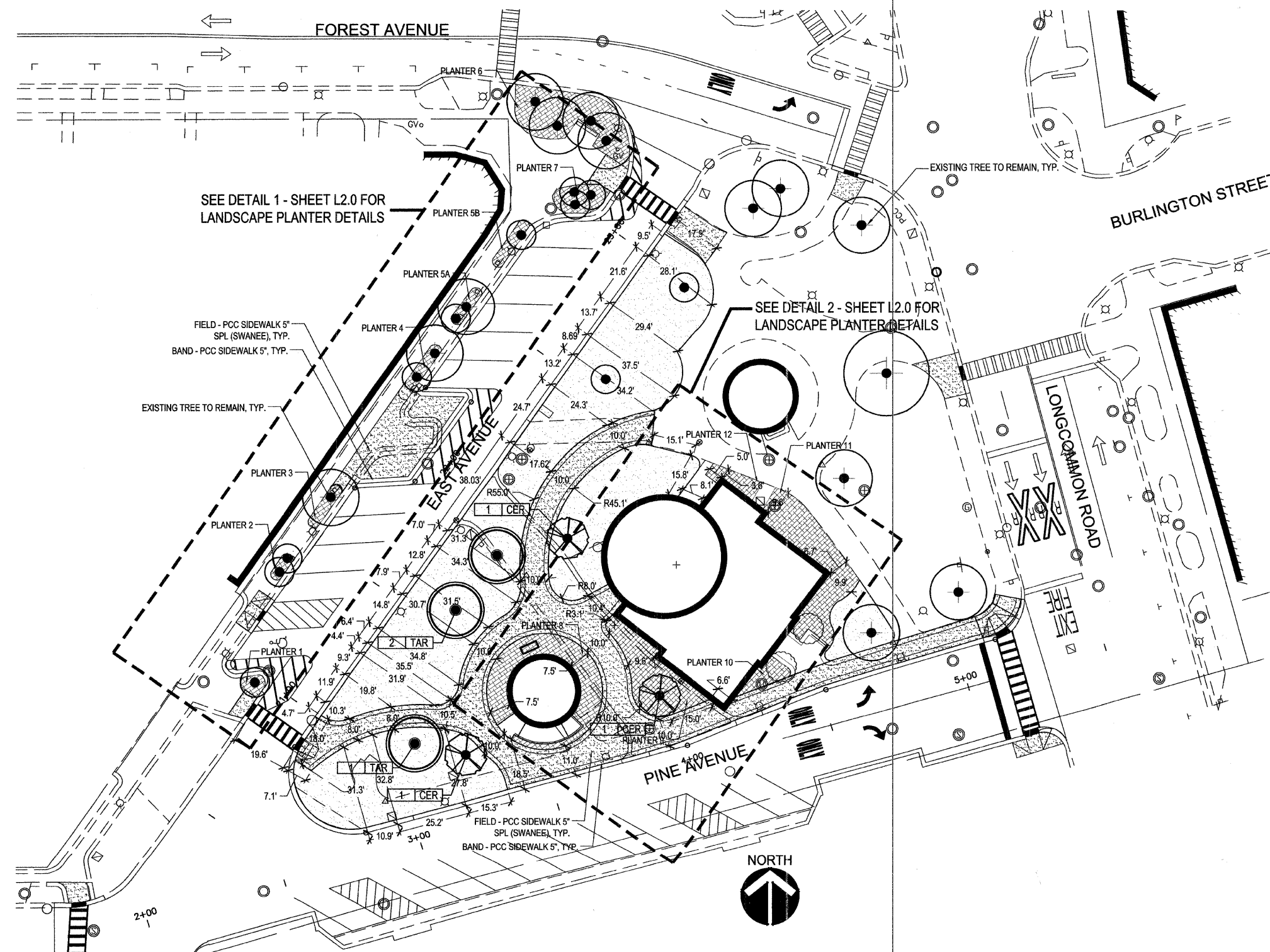


F.A.U. RTE.	SECTION	COUNTY	TOTAL SHEETS	SHEET NO.
4724 3569	06-00073-00-LS	COOK	24	18
STA.		TO STA.		
FED. ROAD DIST. NO.	ILLINOIS	FED. AID PROJECT		
CONTRACT NO. 63133				

L-1.0



SEE DETAIL 1 - SHEET L2.0 FOR LANDSCAPE PLANTER DETAILS

SEE DETAIL 2 - SHEET L2.0 FOR LANDSCAPE PLANTER DETAILS

1 WATER TOWER CAMPUS SITE PLAN

SCALE: 1" = 20'-0"

Diane Legge Kemp
 Diane Legge Kemp, Principal
 DLK Civic Design
 410 South Michigan Avenue
 Chicago, Illinois 60605
 ph: 312.322.0911

#157-006898
 001-009224
 exp. 8/31/09

DIANE LEGGE KEMP
 LICENSED ARCHITECT
 STATE OF ILLINOIS

FOR SHEETS L-1.0 THROUGH L-3.0
 AND A-1.0 THROUGH A-2.0

DLK
 Civic Design
 The Fine Arts Building
 410 South Michigan Avenue
 Chicago, Illinois 60605
 Tel. 312.322.0911
 Fax 312.322.5324
 www.dlkinc.com

REVISIONS	
NAME	DATE

ILLINOIS DEPARTMENT OF TRANSPORTATION
 FAU ROUTES 1472 & 3569
 VILLAGE OF RIVERSIDE
 RAILWAY/WATER TOWER CAMPUS RESTORATION PROJECT

LANDSCAPE SITE PLAN

SCALE: 1"=20'-0"
 DATE: 03-27-2009

DRAWN BY: SM
 CHECKED BY: JE