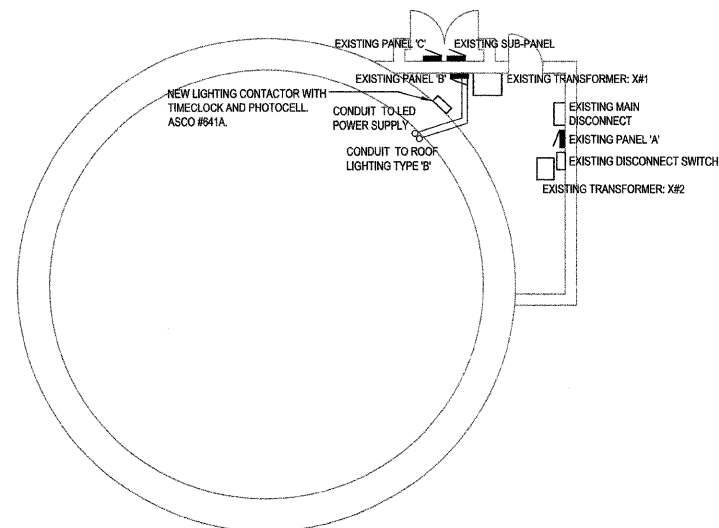
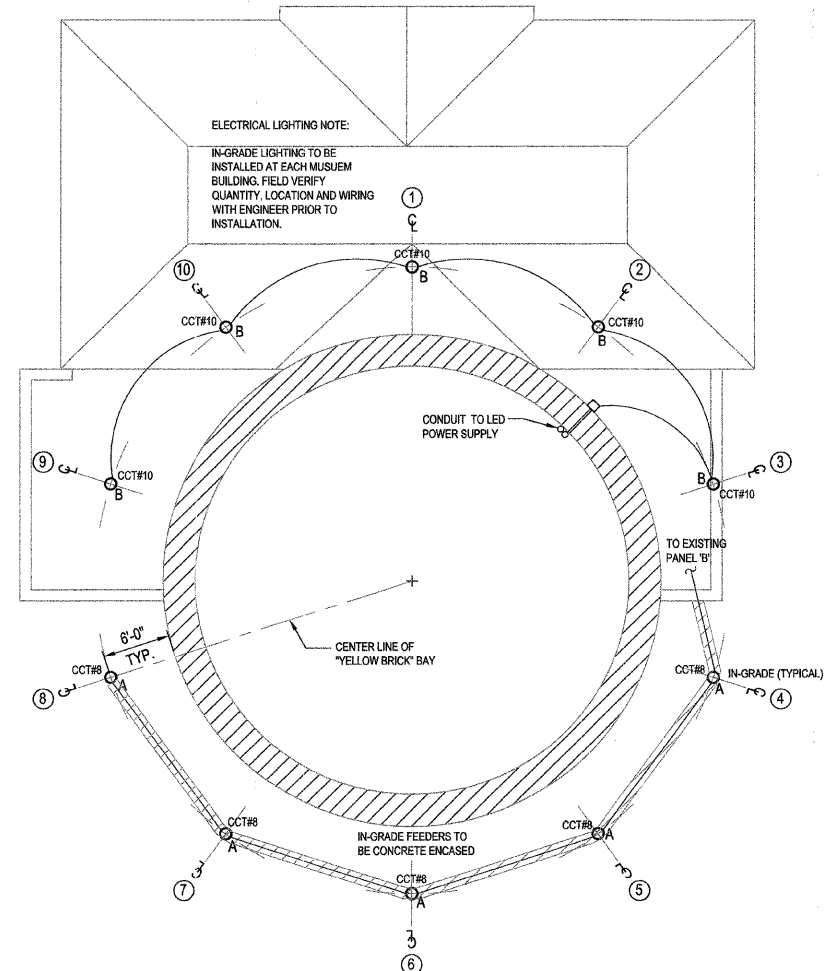


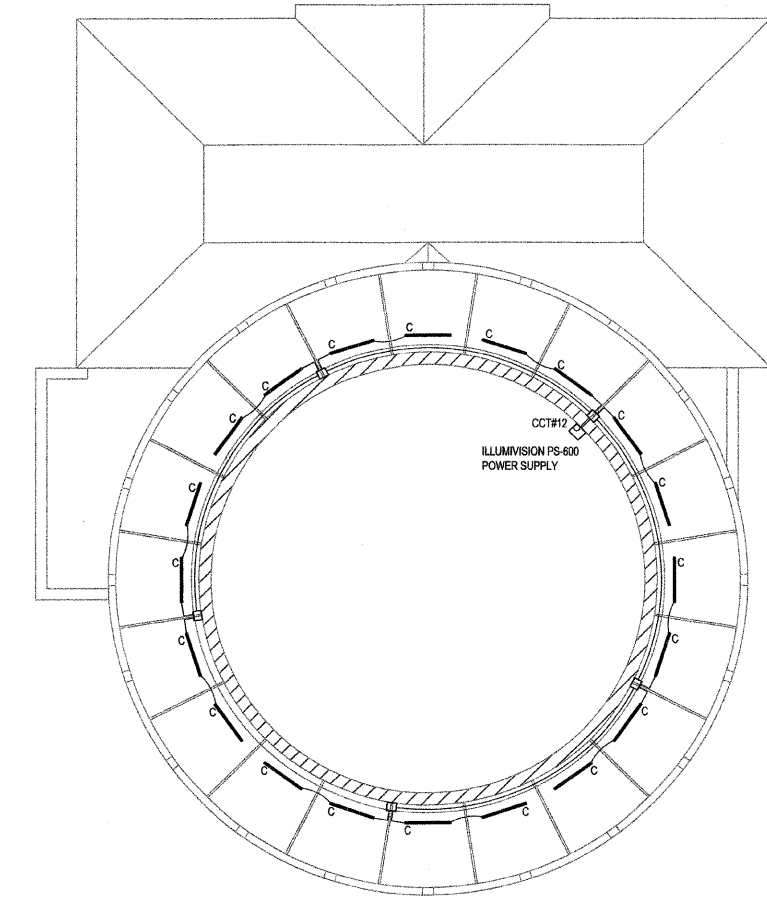
F.A.U. RTE.	SECTION	COUNTY	TOTAL SHEETS	SHEET NO.
1472 & 3569	06-00073-00-LS	COOK	24	23
STA.		TO STA.		
FED. ROAD DIST. NO.	ILLINOIS	FED. AID PROJECT		
CONTRACT NO. 63133				



**E1** ELECTRICAL CLOSET PLAN  
SCALE: 1/4" = 1'-0"



**E2** FIRST FLOOR LIGHTING PLAN  
SCALE: 1/8" = 1'-0"



**E3** BALCONY LIGHTING PLAN  
SCALE: 1/4" = 1'-0"



**BES** BUILDING ENGINEERING SYSTEMS, LLC  
MECHANICAL, ELECTRICAL, PLUMBING AND FIRE PROTECTION ENGINEERING  
444 N. WELLS STREET  
SUITE 501  
CHICAGO, IL 60654  
T (312) 836-0595  
F (312) 836-0596  
www.besengr.com

REVISIONS	
NAME	DATE
ISSUE FOR PERMIT	02.06.09

ILLINOIS DEPARTMENT OF TRANSPORTATION  
FAU ROUTES 1472 & 3569  
VILLAGE OF RIVERSIDE  
RAILWAY/WATER TOWER CAMPUS RESTORATION PROJECT

**ELECTRICAL POWER AND LIGHTING PLANS**

SCALE: AS NOTED  
DATE: FEBRUARY 6, 2009

DRAWN BY:  
CHECKED BY: