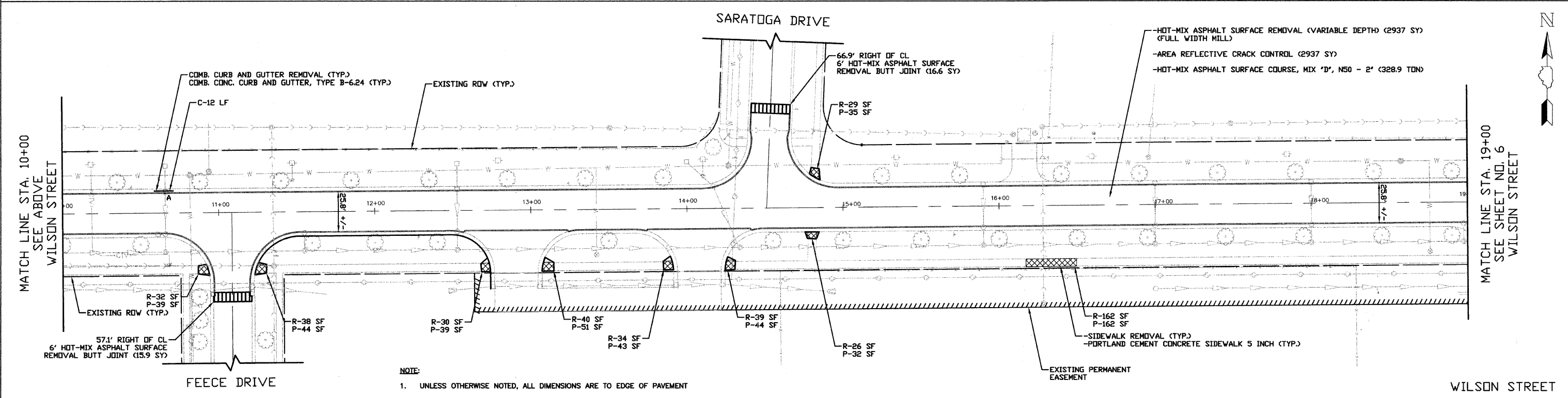
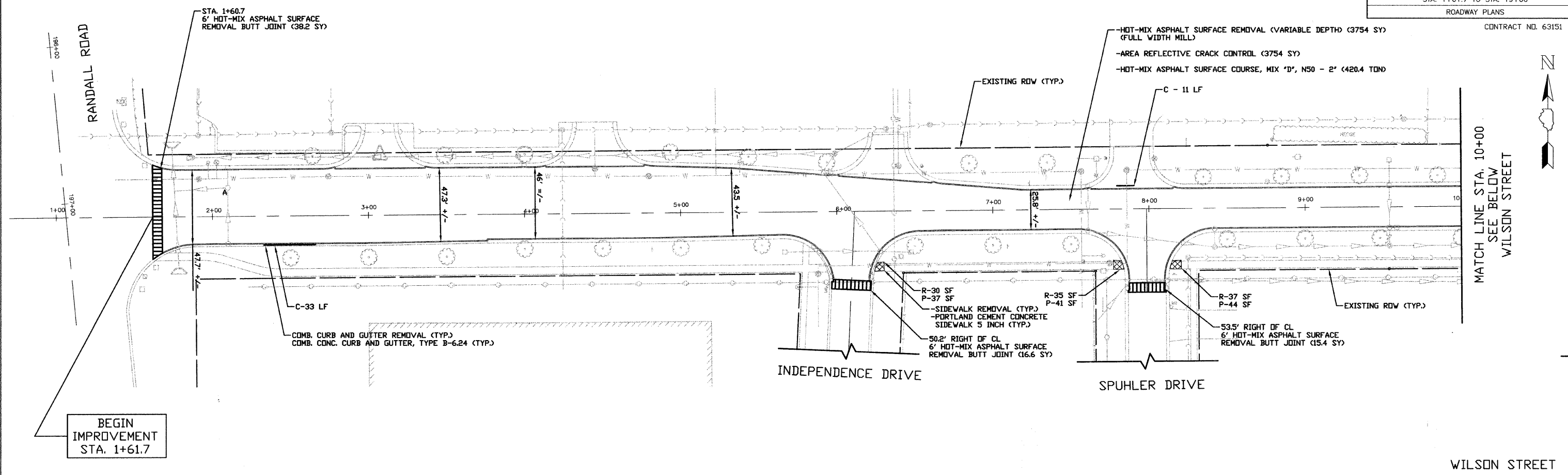


F.A.U. ROUTE	SECTION	COUNTY	TOTAL SHEETS	SHEET NO.
1441	09-00071-00-RS	KANE	20	5
STA. 1+61.7 TO STA. 19+00				
ROADWAY PLANS				

CONTRACT NO. 63151



- NOTE:**
- UNLESS OTHERWISE NOTED, ALL DIMENSIONS ARE TO EDGE OF PAVEMENT
 - HOT-MIX ASPHALT SURFACE REMOVAL SHALL CONSIST OF VARIABLE DEPTH MILLING. THE CONTRACTOR SHALL ADJUST THE MILL AS NECESSARY TO ACHIEVE A 2% PAVEMENT CROSS SLOPE.
 - R = SIDEWALK REMOVAL
 - P = PORTLAND CEMENT CONCRETE SIDEWALK 5 INCH
 - C = COMBINATION CURB AND GUTTER REMOVAL
COMBINATION CONCRETE CURB AND GUTTER, TYPE B-6.12
 - ALL LANDSCAPING RESTORATION IS INCIDENTAL TO THE ITEM BEING REMOVED OR REPLACED.

NO.	DATE	REVISIONS
1	2/6	NEW PAVEMENT MARKING PLAN
2	3/18	PER IDOT COMMENTS

CITY OF BATAVIA
WILSON STREET

ROADWAY PLANS
STA. 1+61.7 TO STA. 19+00

DATE: 4/6/09
DESIGNED BY: K.R.Y.
CHECKED BY: N.A.B.

SCALE IN FEET

I.D.O.T. FINAL SUBMITTAL

Streets\STR_09_001_Wilson_LAPP_CAD\Sheet\05_P_Wilson.dwg(Layout1)
 PLOTTED: Thursday, 09 Apr 2009 - 5:44pm
 SAVED: Thursday, 09 Apr 2009 - 5:45pm