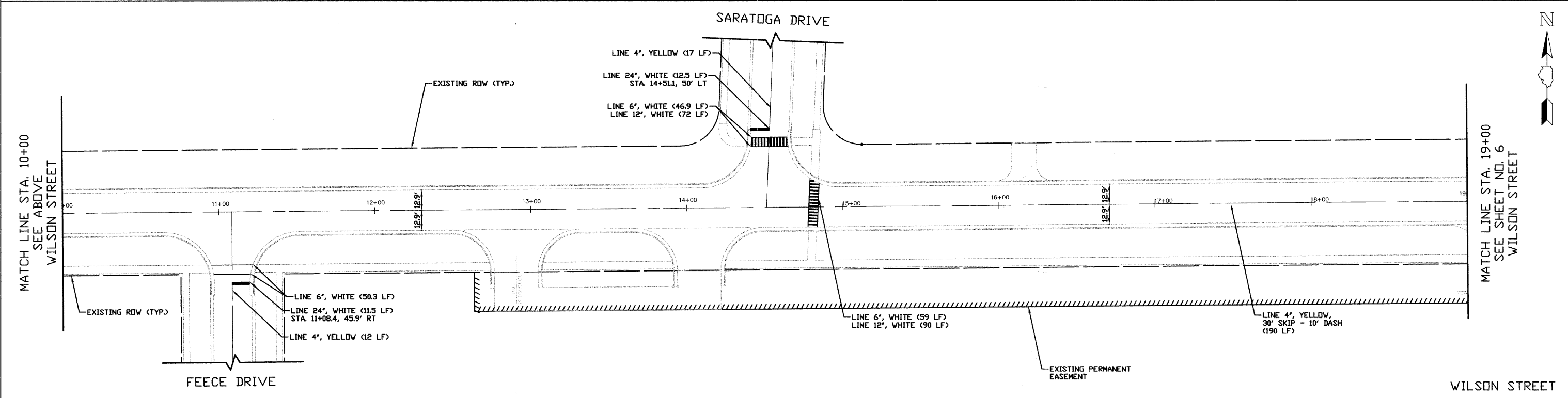
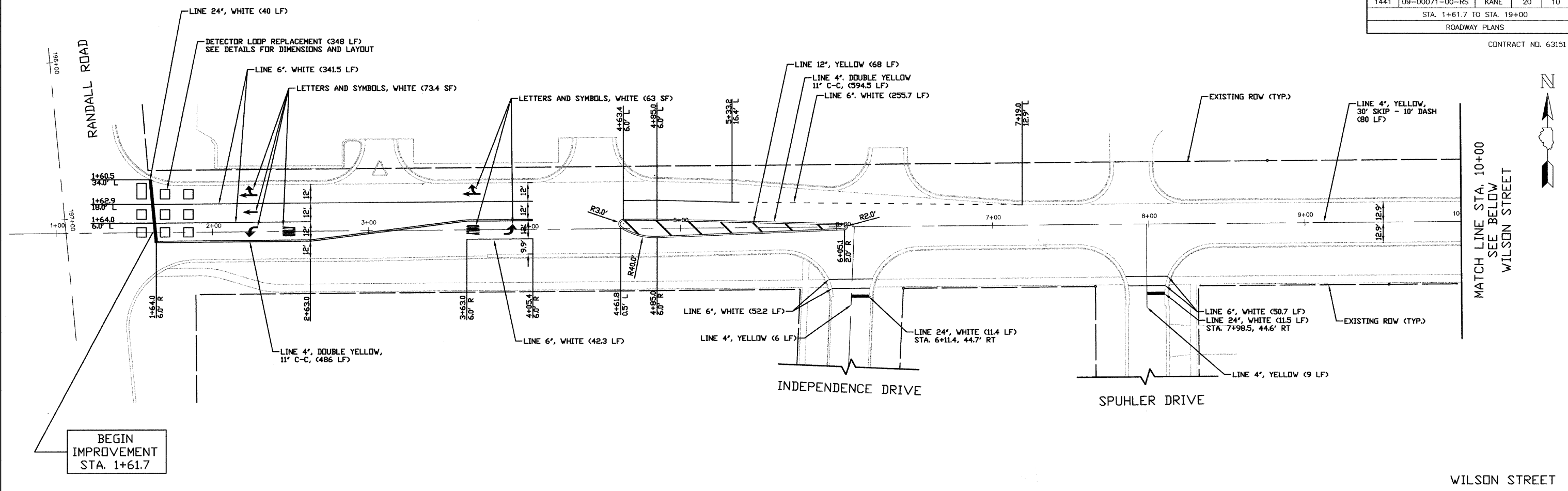


F.A.U. ROUTE	SECTION	COUNTY	TOTAL SHEETS	SHEET NO.
1441	09-00071-00-RS	KANE	20	10
STA. 1+61.7 TO STA. 19+00				
ROADWAY PLANS				

CONTRACT NO. 63151



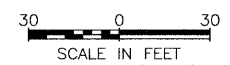
NOTE:
1. ALL PAVEMENT MARKINGS ARE TO BE THERMOPLASTIC

NO.	DATE	REVISIONS
1	2/6	NEW PAVEMENT MARKING PLAN
2	3/18	PER IDOT COMMENTS

CITY OF BATAVIA
WILSON STREET

PAVEMENT MARKING PLANS
STA. 1+61.7 TO STA. 19+00

DATE: 4/6/09
DESIGNED BY: K.R.Y.
CHECKED BY: N.A.B.



I.D.O.T. FINAL SUBMITTAL

.\\strata\STR_09_001_Wilson_LAPP\APP\sheet\10_P_MRK_Wilson.dwg[Layout1]
 PLOTTED: Thursday, 09 Apr 2009 - 6:27pm
 SAVED: Thursday, 09 Apr 2009 - 8:26pm