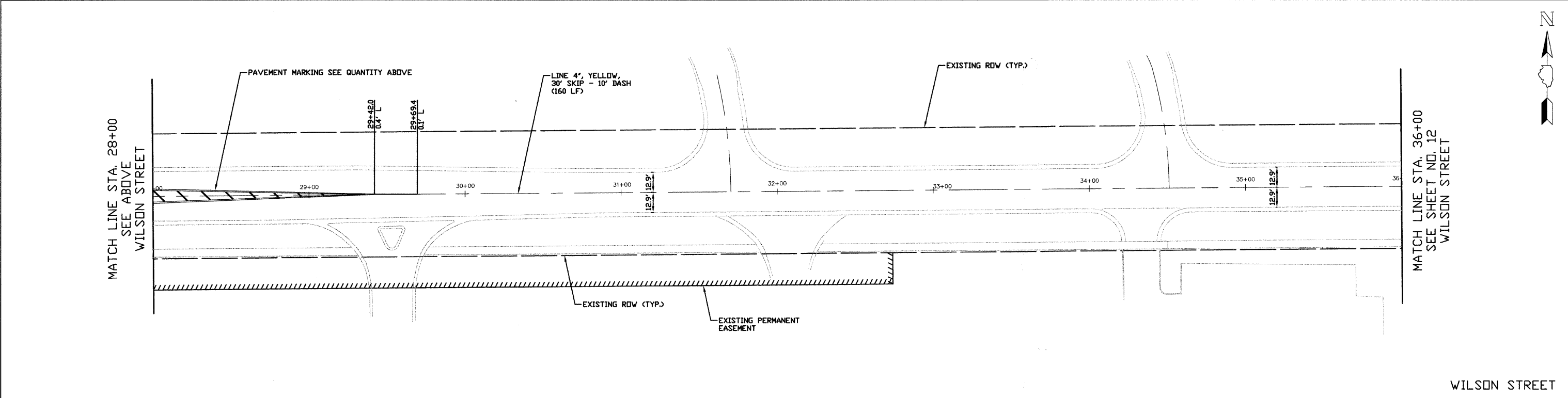
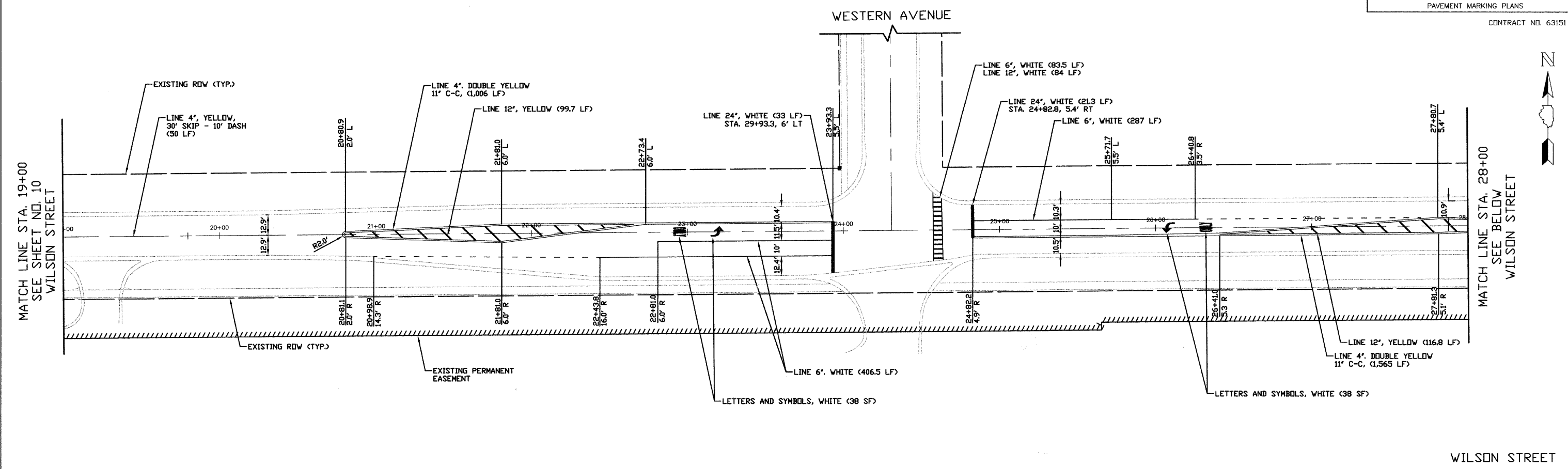


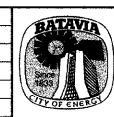
F.A.U. ROUTE	SECTION	COUNTY	TOTAL SHEETS	SHEET NO.
1441	09-00071-00-RS	KANE	20	11
STA. 19+00 TO STA. 36+00				
PAVEMENT MARKING PLANS				

CONTRACT NO. 63151



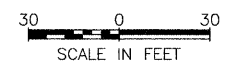
NOTE:
1. ALL PAVEMENT MARKINGS ARE TO BE THERMOPLASTIC

NO.	DATE	REVISIONS
1	2/6	NEW PAVEMENT MARKING PLAN
2	3/18	PER IDOT COMMENTS



CITY OF BATAVIA
WILSON STREET

PAVEMENT MARKING PLANS
STA. 19+00 TO STA. 36+00



DATE: 4/6/09
DESIGNED BY: K.R.Y.
CHECKED BY: N.A.B.

I.D.O.T. FINAL SUBMITTAL

.\\streets\STR_09_001_Wilson_LAPP\cadd\sheet\1_P_MRK_Wilson.dwg(Layout1)
 PLOTTED: Thursday, 09 Apr 2009 - 6:28pm
 SAVED: Monday, 06 Apr 2009 - 12:15pm