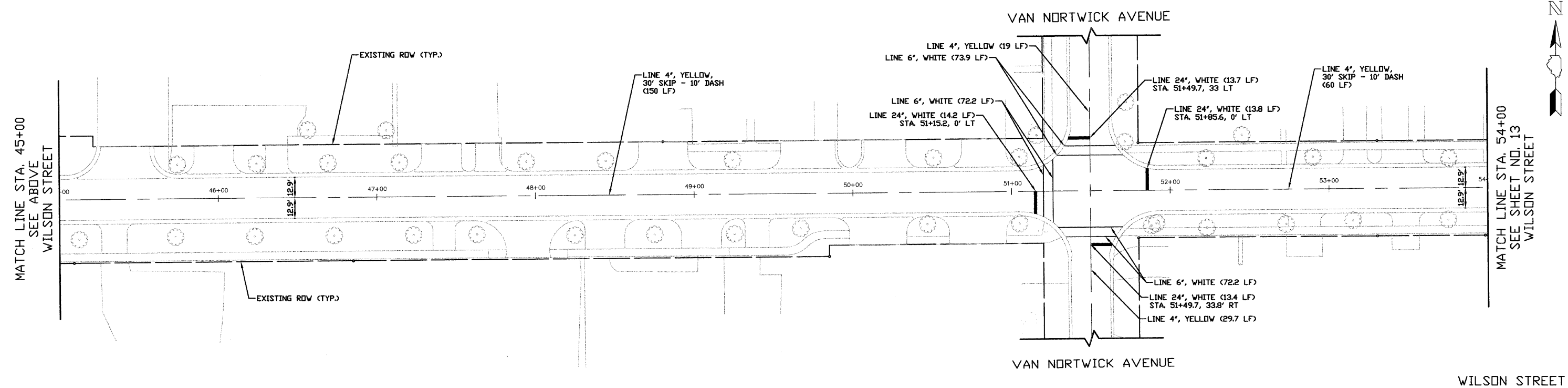
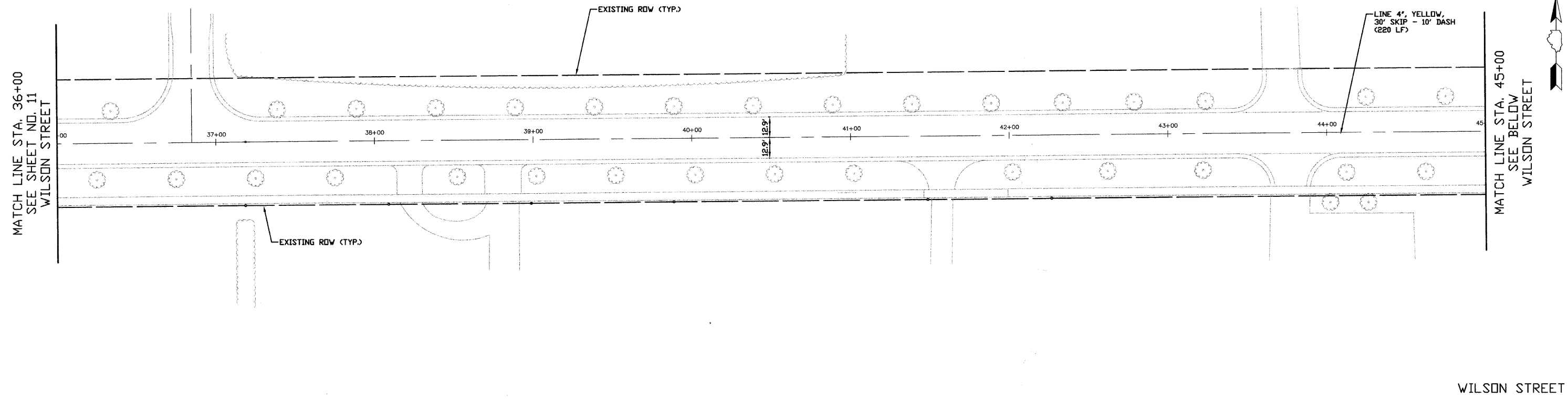


F.A.U. ROUTE	SECTION	COUNTY	TOTAL SHEETS	SHEET NO.
1441	09-00071-00-RS	KANE	20	12
STA. 36+00 TO STA. 54+00				
PAVEMENT MARKING PLANS				

CONTRACT NO. 63151

**NOTE:**  
1. ALL PAVEMENT MARKINGS ARE TO BE THERMOPLASTIC



NO.	DATE	REVISIONS
1	2/6	NEW PAVEMENT MARKING PLAN
2	3/18	PER IDOT COMMENTS

CITY OF BATAVIA  
WILSON STREET

PAVEMENT MARKING PLANS  
STA. 36+00 TO STA. 54+00

SCALE IN FEET

DATE: 4/6/09  
DESIGNED BY: K.R.Y.  
CHECKED BY: N.A.B.

.\\streda\STR\_09\_001\_Wilson\_LAPP\_Cad\sheet\12\_P\_MRK\_Wilson.dwg[Layout1]  
 PLOTTED: Thursday, 09 Apr 2009 - 6:29pm  
 SAVED: Tuesday, 07 Apr 2009 - 1:27pm