

F. A. I. D. NO.	SECTION	COUNTY	TOTAL SHEETS	SHEET NO.
0281	07-00050-00-FP	WILL.	33	1
STA.		TO STA.		
FED. ROAD DIST. NO. 1	ALINKS	FED. AID PROJECT		

CONTRACT #63157

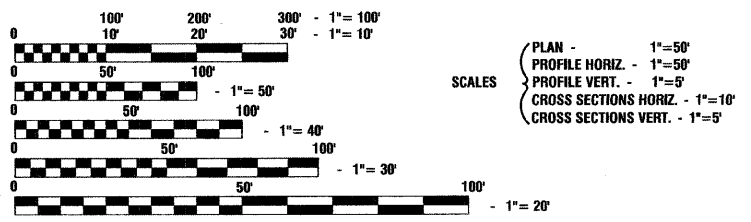
INDEX OF SHEETS

- 1. COVER SHEET
- 2.-3. SUMMARY OF QUANTITIES
- 4. GENERAL NOTES
- 5. TYPICAL CROSS SECTIONS
- 6. ALIGNMENT AND TIES
- 7. DETOUR PLAN
- 8.-9. MAINTENANCE OF TRAFFIC
- 10.-12. PLAN AND PROFILE
- 13.-15. DRAINAGE AND UTILITIES
- 16. PAVEMENT MARKING PLAN AND SIGNING PLAN
- 17. LANDSCAPING AND EROSION CONTROL PLAN
- 18.-25. IDOT DISTRICT 1 DETAILS
- 26.-27. CONSTRUCTION DETAILS
- 28.-33. CROSS SECTIONS

HIGHWAY STANDARDS

000001-05	STANDARD SYMBOLS, ABBREVIATIONS AND PATTERNS
280001-04	TEMPORARY EROSION CONTROL SYSTEMS
424001-05	CURB RAMPS FOR SIDEWALKS
602001-01	CATCH BASIN - TYPE A
602011-01	CATCH BASIN - TYPE C
602301-02	INLET - TYPE A
602401-02	MANHOLE - TYPE A
602406-03	MANHOLE - TYPE A, 6' DIAMETER
602601-02	PRECAST REINFORCED CONCRETE FLAT TOP SLAB
602701-02	CAST IRON STEPS
604001-03	FRAME AND LIDS - TYPE 1
604036-02	GRATE - TYPE 8
604051-03	FRAME AND GRATE - TYPE 11
604091-02	FRAME AND GRATE - TYPE 24
606001-04	CONC. CURB TYPE B AND COMBINATION CONC. CURB AND GUTTER
701006-03	OFF-RD OPERATIONS, 2L, 2W, 15' TO 2' FROM PAVEMENT EDGE
701301-03	LANE CLOSURE, 2L, 2W, SHORT TIME OPERATIONS
701311-03	LANE CLOSURE, 2L, 2W, MOVING OPERATIONS - DAY ONLY
701501-05	URBAN LANE CLOSURE, 2L, 2W, UNDIVIDED
701502-03	URBAN LANE CLOSURE, 2L, 2W, WITH BIDIRECTIONAL LEFT TURN LANE
701801-04	LANE CLOSURE MULTILANE 1W OR 2W CROSSWALK OR SIDEWALK CLOSURE
701901-01	TRAFFIC CONTROL DEVICES
720001-01	SIGN PANEL MOUNTING DETAILS
720006-02	SIGN PANEL ERECTION DETAILS
720011-01	METAL POSTS FOR SIGNS, MARKERS & DELINEATORS
780001-02	TYPICAL PAVEMENT MARKINGS

DESIGN DESIGNATION	- NORMANTOWN ROAD ADT 21,000 (2030) - COLLECTOR (TF=1.08) PV=20,370 SU=505 MU=125	
	- ROGERS ROAD ADT 3,000 (2030) - LOCAL (TF=0.42) PV=2,750 SU=210 MU=40	
	NORMANTOWN ROAD	ROGERS ROAD
2007 ADT	14,000	2,800
2030 ADT	21,000	3,000
EXISTING SPEED LIMIT	25 MPH	25 MPH
PROPOSED SPEED LIMIT	25 MPH	25 MPH
DESIGN PERIOD	20 YEARS	20 YEARS
DESIGN SPEED LIMIT	30 MPH	30 MPH
STREET CLASSIFICATION	CLASS II ROAD	CLASS IV ROAD



FULL SIZE PLANS HAVE BEEN PREPARED USING STANDARD ENGINEERING SCALES, REDUCED SIZED PLANS WILL NOT CONFORM TO STANDARD SCALES, IN MAKING MEASUREMENTS ON REDUCED PLANS, THE ABOVE SCALES MAY BE USED.

J. U. L. I. E.
JOINT UTILITY LOCATION INFORMATION FOR EXCAVATION
1-800-892-0123 or 811

CONTRACT NO. 63157

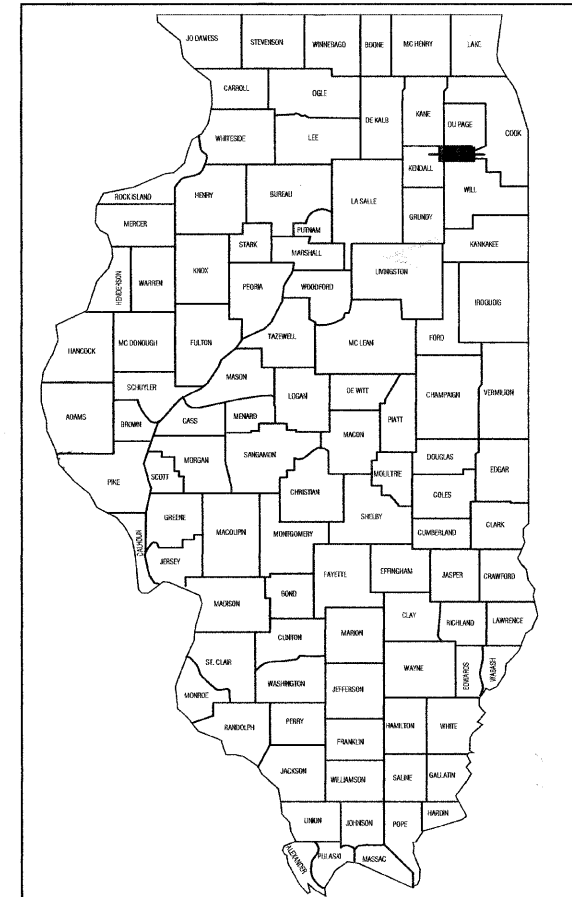
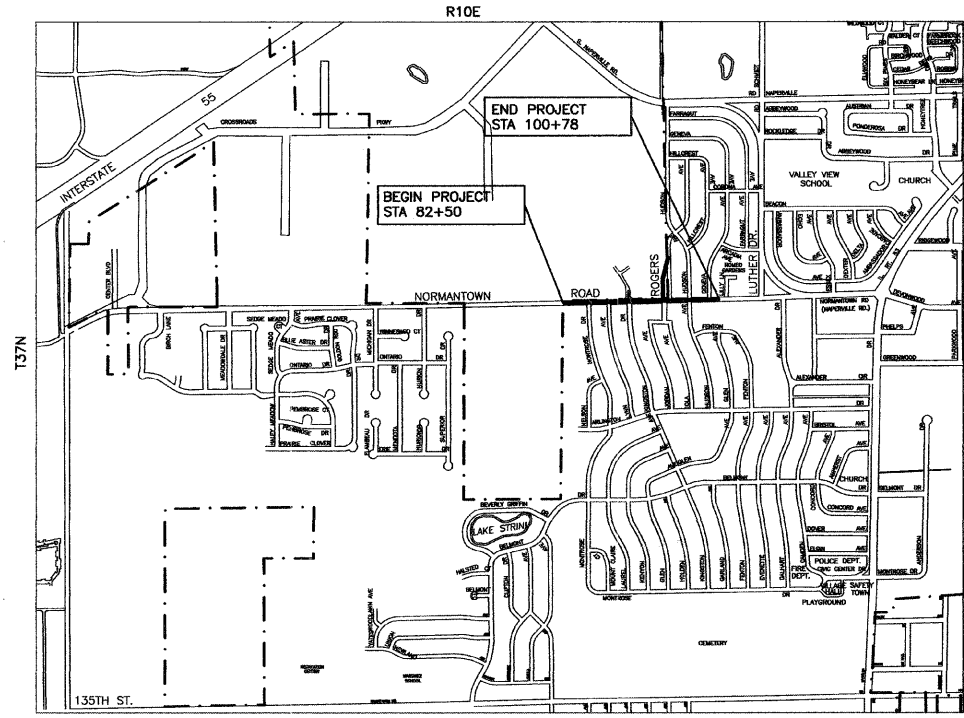
REVISIONS:

Rev. #1, 2-24-2009, (IDOT Review)

STATE OF ILLINOIS
DEPARTMENT OF TRANSPORTATION
DIVISION OF HIGHWAYS

**PLANS FOR PROPOSED
FEDERAL AID HIGHWAY**

**NORMANTOWN ROAD (FAU 0281)
MONTROSE DRIVE (FAU 0348) TO LUTHER DRIVE (FAU 0351)
ROAD RECONSTRUCTION
PROJECT: M-8003 (764)
SECTION NO.: 07-00050-00-FP
JOB NO.: C-91-162-07
VILLAGE OF ROMEOVILLE
WILL COUNTY**



LOCATION OF SECTION INDICATED THIS: - [thick black line] -

STATE OF ILLINOIS DEPARTMENT OF TRANSPORTATION
DIVISION OF HIGHWAYS

Approved: 3/20/09
John M. O'Keefe
Village of Romeoville - Mayor

Passed: 4-1-09
CHRISTOPHER HOLT
District 1 Engineer of Local Roads & Streets

Released for Bid
Based on Limited Review: APRIL 1, 2009
Diane M. O'Keefe
Deputy Director of Highways, Region 1 Engineer

DESCRIPTION OF IMPROVEMENT
THIS IMPROVEMENT CONSISTS OF EARTH EXCAVATION, PAVEMENT REMOVAL, HOT-MIX ASPHALT, CURB AND GUTTER, SIDEWALK, DRIVEWAYS, PAVEMENT MARKINGS, STORM SEWER, LANDSCAPING, AND ALL INCIDENTAL WORK AS NECESSARY TO COMPLETE THE IMPROVEMENT SHOWN HEREIN AND AS DESCRIBED IN THE SPECIFICATIONS.

PREPARED BY OR UNDER THE DIRECT SUPERVISION OF:
[Signature]
DATED THIS 19th DAY OF JANUARY, 2009

062-046137 REGISTERED PROFESSIONAL ENGINEER
STATE OF ILLINOIS
LICENSE EXPIRES: 11/30/09

PRINTED BY THE AUTHORITY OF
THE STATE OF ILLINOIS

PROJECT LOCATION

GROSS LENGTH= 2,335 FEET = 0.44 MILES
NET LENGTH= 2,335 FEET = 0.44 MILES

FIELD ENGINEER: MELCHOR MANGOBA 847-705-4408
CONSULTANTS: ROBINSON ENGINEERING, LTD. 708-331-6700