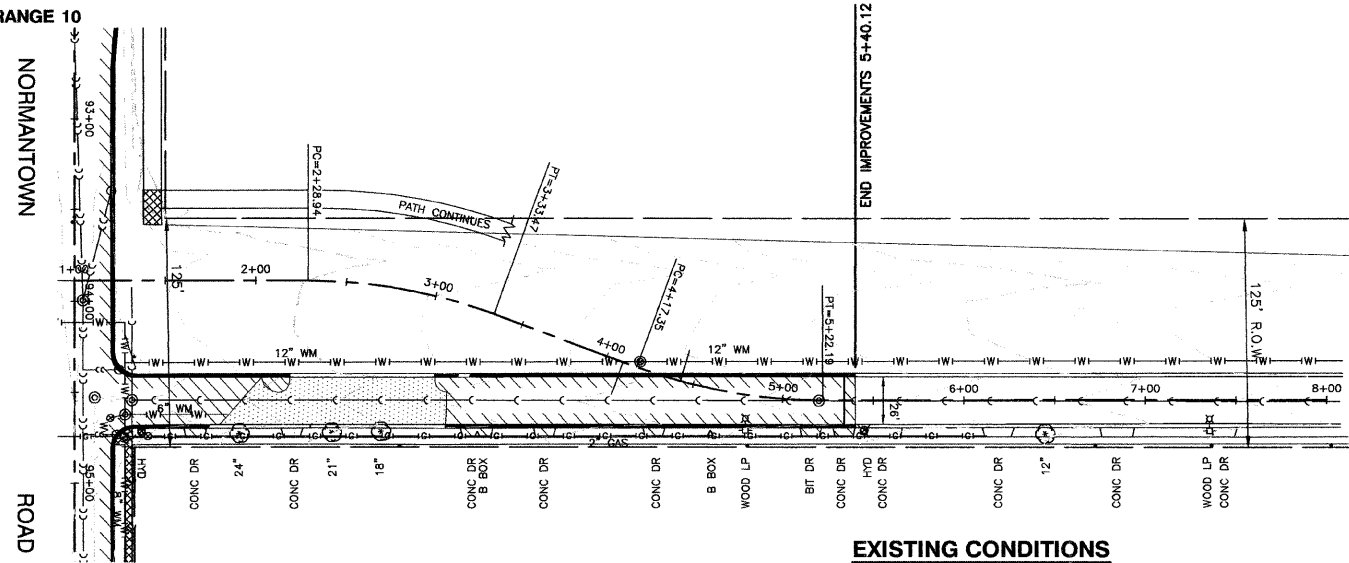


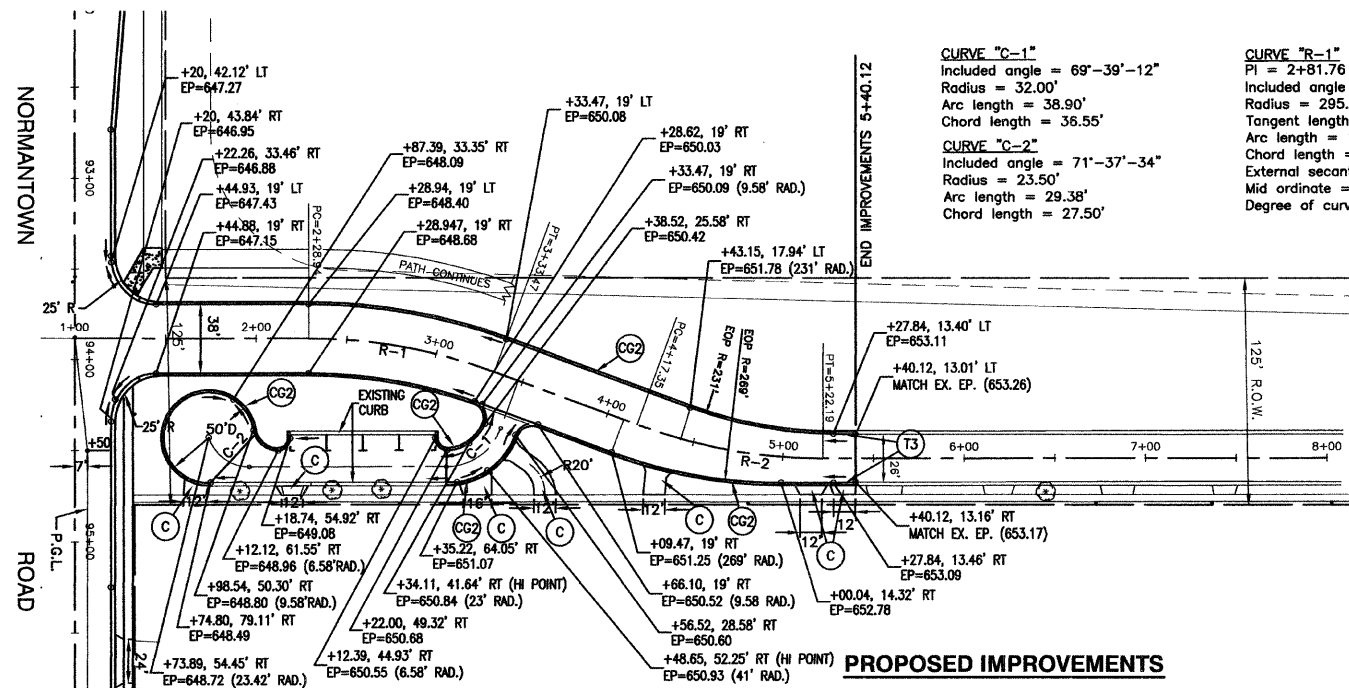
F.A.U. NO.	SECTION	COUNTY	TOTAL SHEETS	SHEET NO.
0281	07-00050-00-FP	WILL	33	12
STA.	TO STA.			
FED. ROAD DIST. NO. 1	ALLIANCE	FED. AID PROJECT		

CONTRACT #63157



ROGERS AVE.

EXISTING CONDITIONS



ROGERS AVE.

PROPOSED IMPROVEMENTS

**CURVE "C-1"**  
 Included angle = 69°-39'-12"  
 Radius = 32.00'  
 Arc length = 38.90'  
 Chord length = 36.55'

**CURVE "C-2"**  
 Included angle = 71°-37'-34"  
 Radius = 23.50'  
 Arc length = 29.38'  
 Chord length = 27.50'

**CURVE "R-1"**  
 PI = 2+81.76  
 Included angle = 20°-18'-04"  
 Radius = 295.00'  
 Tangent length = 52.82'  
 Arc length = 104.53'  
 Chord length = 103.98'  
 External secant = 4.69'  
 Mid ordinate = 4.62'  
 Degree of curve = 19°-25'-20"

**CURVE "R-2"**  
 PI = 4+70.33  
 Included angle = 20°-21'-45"  
 Radius = 295.00'  
 Tangent length = 52.98'  
 Arc length = 104.84'  
 Chord length = 104.29'  
 External secant = 4.72'  
 Mid ordinate = 4.65'  
 Degree of curve = 19°-25'-20"



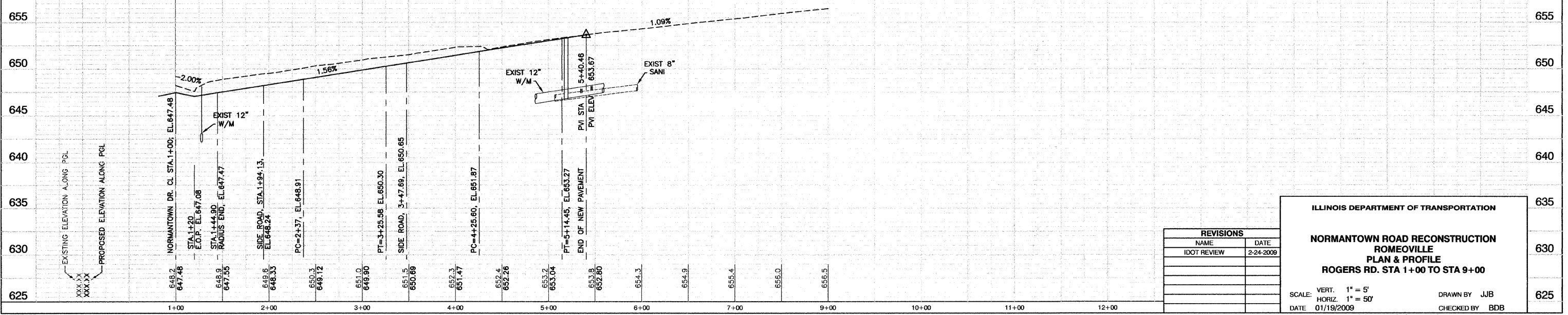
LEGEND

- ⊗ TREE TO BE REMOVED
- CONC CURB AND GUTTER REMOVAL
- ▨ PAVEMENT REMOVAL
- ▤ HMA SURFACE REMOVAL, 2"
- ⊠ CONC SIDEWALK REMOVAL
- ⊞ REMOVE
- R&R REMOVE & RELOCATE
- ⊙ P.C.C. DRIVEWAY, 6"
- ⊙ CW P.C.C. SIDEWALK, 5"
- ⊙ CW P.C.C. SIDEWALK RAMP W/ DETECTABLE WARNING
- ⊙ CG1 C & G TYPE B-6.24
- ⊙ CG2 C & G TYPE B-6.12
- ⊙ CG3 C & G TYPE B-6.18
- ⊙ T1 TRANSITION FROM C & G TYPE B-6.24 TO C & G TYPE B-6.12
- ⊙ T2 TRANSITION FROM C & G TYPE B-6.24 TO EXISTING CURB AND GUTTER
- ⊙ T3 TRANSITION FROM C & G TYPE B-6.12 TO EXISTING CURB AND GUTTER
- ⊙ T4 TRANSITION FROM C & G TYPE B-6.24 TO C & G TYPE B-6.18

BENCHMARKS:

BENCHMARK #5  
 ARROW ON HYDRANT FLANGE AT N.E. CORNER ROGERS ROAD AND NORMANTOWN ROAD  
 ELEVATION= 649.91

BENCHMARK #7  
 ARROW ON HYDRANT FLANGE OF 1ST HYDRANT EAST OF GENEVA AVENUE, NORTH SIDE OF NORMANTOWN ROAD  
 ELEVATION= 649.60



REVISIONS	
NAME	DATE
IDOT REVIEW	2-24-2009

ILLINOIS DEPARTMENT OF TRANSPORTATION

**NORMANTOWN ROAD RECONSTRUCTION  
 ROMEVILLE  
 PLAN & PROFILE  
 ROGERS RD. STA 1+00 TO STA 9+00**

SCALE: VERT. 1" = 5'  
 HORIZ. 1" = 50'

DATE: 01/19/2009

DRAWN BY: JJB  
 CHECKED BY: BDB