

SECTION 33, TOWNSHIP 37, RANGE 10

F.A.L. NO.	SECTION	COUNTY	TOTAL SHEETS	SHEET NO.
0281	07-00050-00-FP	WILL	33	13
STA.		TO STA.		
FED. ROAD DIST. NO. 1		ILLINOIS	FED. AID PROJECT	

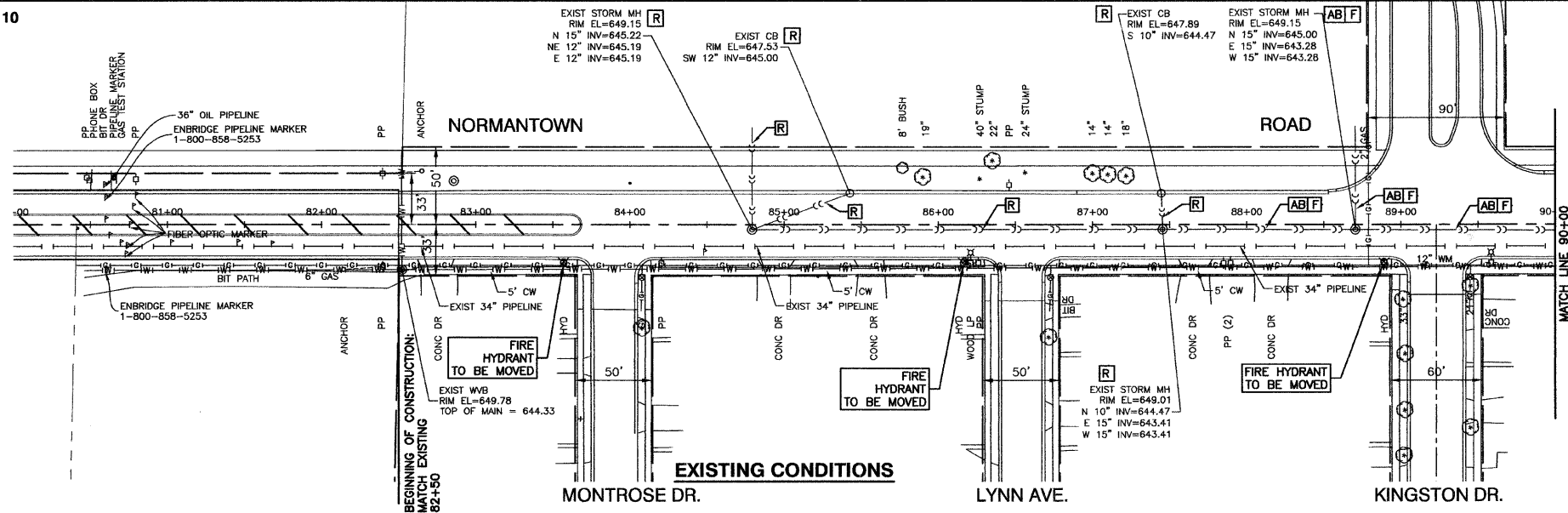
CONTRACT #63157

REMOVAL LEGEND

- [AB] ABANDON STRUCTURE OR PIPE
- [F] FILL STRUCTURE OR PIPE
- [R] REMOVE
- [ADJ] ADJUST FRAME & LID

PROPOSED STORM PIPE

- 01 12'-12" SST1 @ 1% (1.8)
- 02 179'-12" SST1 @ 0.6% (32.9)
- 03 12'-12" SST1 @ 1% (1.7)
- 03A 7'-12" SST1 @ 1% (0)
- 04 189'-12" SST1 @ 0.5% (39.7)
- 05 15'-12" SST1 @ 1% (2.1)
- 06 12'-12" SST1 @ 1% (2.1)
- 07 365'-15" SST2 @ 0.46% (124.1)



PROPOSED STRUCTURES

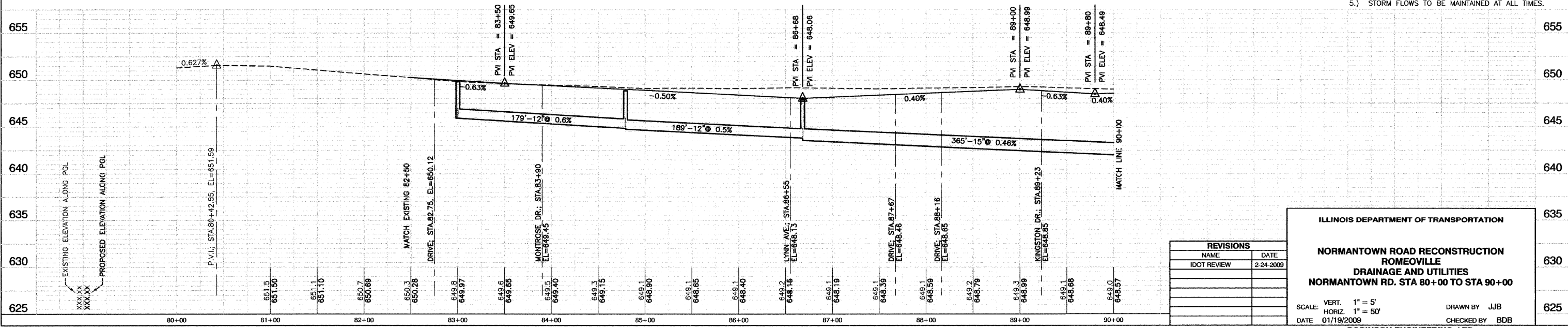
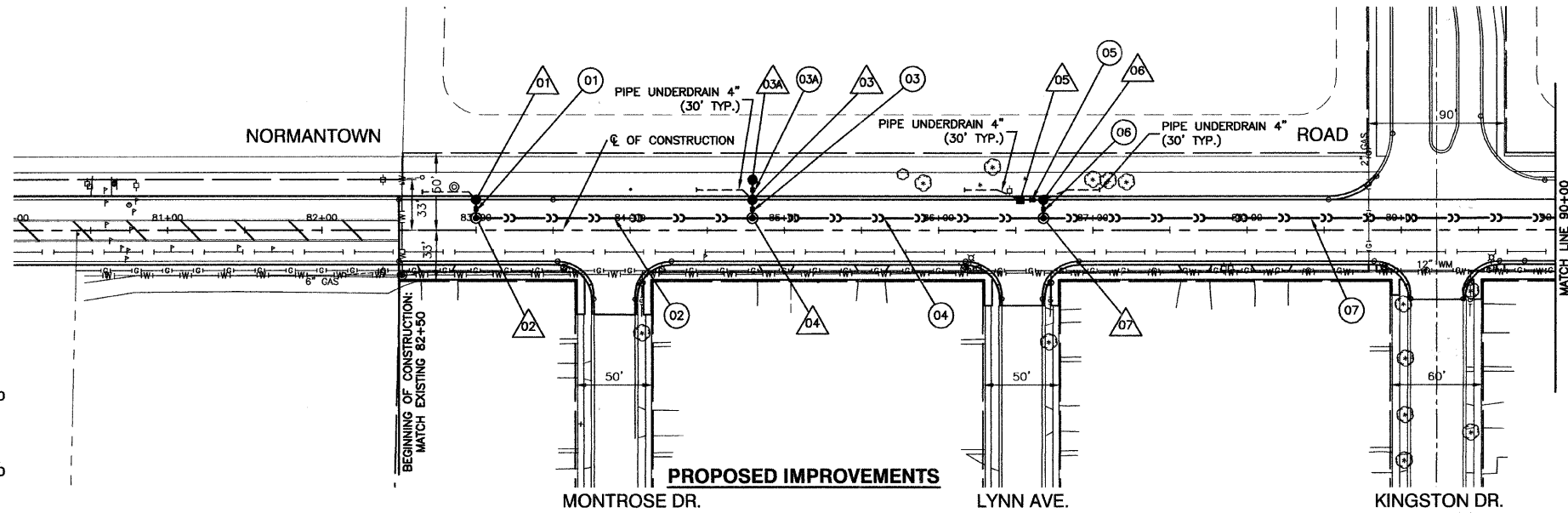
- 01 STA. 83+00 (20' LT.)
CB TA 2'DIA. T8 F&G
RIM EL=649.57
12" FL=646.15
- 02 STA. 83+00 (8' LT.)
MH TA 4'DIA. T1F CL
RIM EL=649.81
N. 12" FL=646.03
E. 12" FL=645.93
- 03 STA. 84+79 (20' LT.)
INL TA T24 F&G
RIM EL=647.74
12" FL=644.28
- 03A STA. 84+79 (8' LT.)
MH TA 4'DIA. T1F CL
RIM EL=648.84
N. 12" FL=644.96
W. 12" FL=644.86
E. 12" FL=644.76
- 04 STA. 84+79 (33' LT.)
CB TA 2'DIA. T8 GRATE
RIM EL=647.64
S. 12" FL=645.25
- 05 STA. 86+53 (20' LT.)
INL TA T24 F&G
RIM EL=647.74
12" FL=644.28
- 06 STA. 86+68 (20' LT.)
CB TA 4'DIA. T24 F&G
RIM EL=647.66
W. 12" FL=644.13
S. 12" FL=644.03
- 07 STA. 86+68 (8' LT.)
MH TA 4'DIA. T1F CL
RIM EL=647.90
N. 12" FL=643.91
W. 12" FL=643.81
E. 15" FL=643.71

- NOTE:
- 1.) OFFSETS ARE FROM ϕ R.O.W.
 - 2.) QUANTITIES IN () ARE TRENCH BACKFILL
 - 3.) ALL RIM ELEVATIONS OF STRUCTURES IN THE PROPOSED CURB LINE ARE GIVEN TO THE EDGE OF PAVEMENT. ALL OTHER RIM ELEVATIONS ARE GIVEN TO THE CENTER OF STRUCTURES
 - 4.) W.M.Q.P. = WATER MAIN QUALITY PIPE
 - 5.) STORM FLOWS TO BE MAINTAINED AT ALL TIMES.

BENCHMARKS:

BENCHMARK #1
SOUTH SOUTHWEST FLANGE BOLT ON THE FIRST HYDRANT WEST OF MICHIGAN DRIVE ON THE SOUTH SIDE OF NORMANTOWN ROAD
ELEVATION= 641.51

BENCHMARK #2
SOUTH SOUTHWEST FLANGE BOLT ON THE SECOND HYDRANT WEST OF MICHIGAN DRIVE ON THE SOUTH SIDE OF NORMANTOWN ROAD
ELEVATION= 639.73



REVISIONS		
NAME	DATE	
IDOT REVIEW	2-24-2009	

ILLINOIS DEPARTMENT OF TRANSPORTATION

**NORMANTOWN ROAD RECONSTRUCTION
ROMEORVILLE
DRAINAGE AND UTILITIES
NORMANTOWN RD. STA 80+00 TO STA 90+00**

SCALE: VERT. 1" = 5'
HORIZ. 1" = 50'

DATE: 01/19/2009

DRAWN BY: JJB
CHECKED BY: RDB