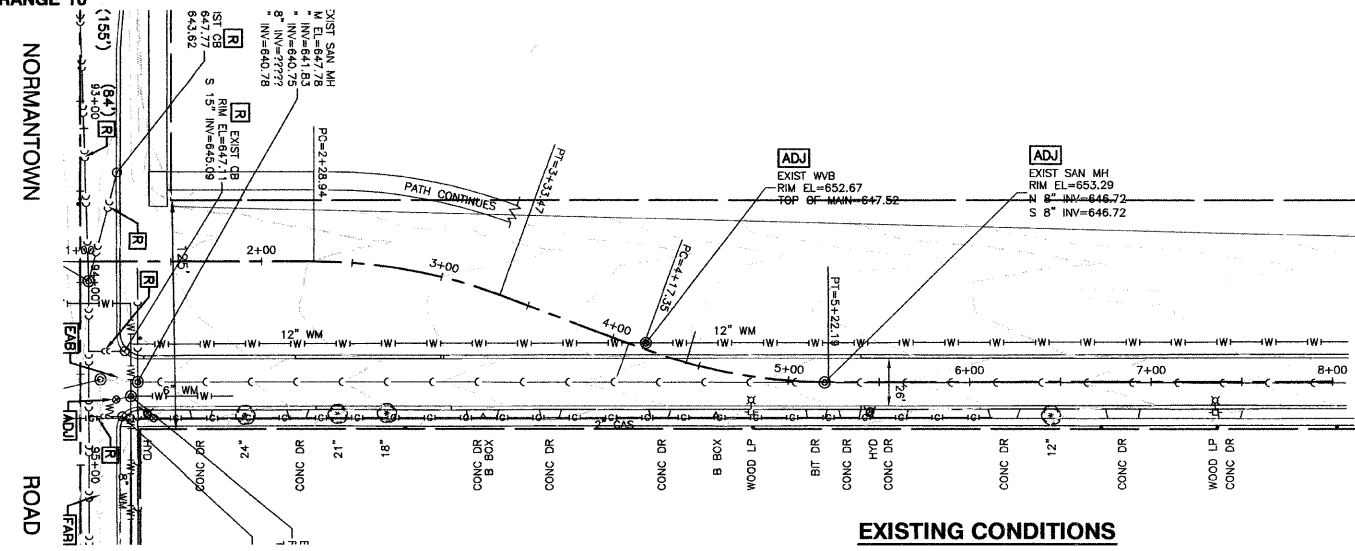


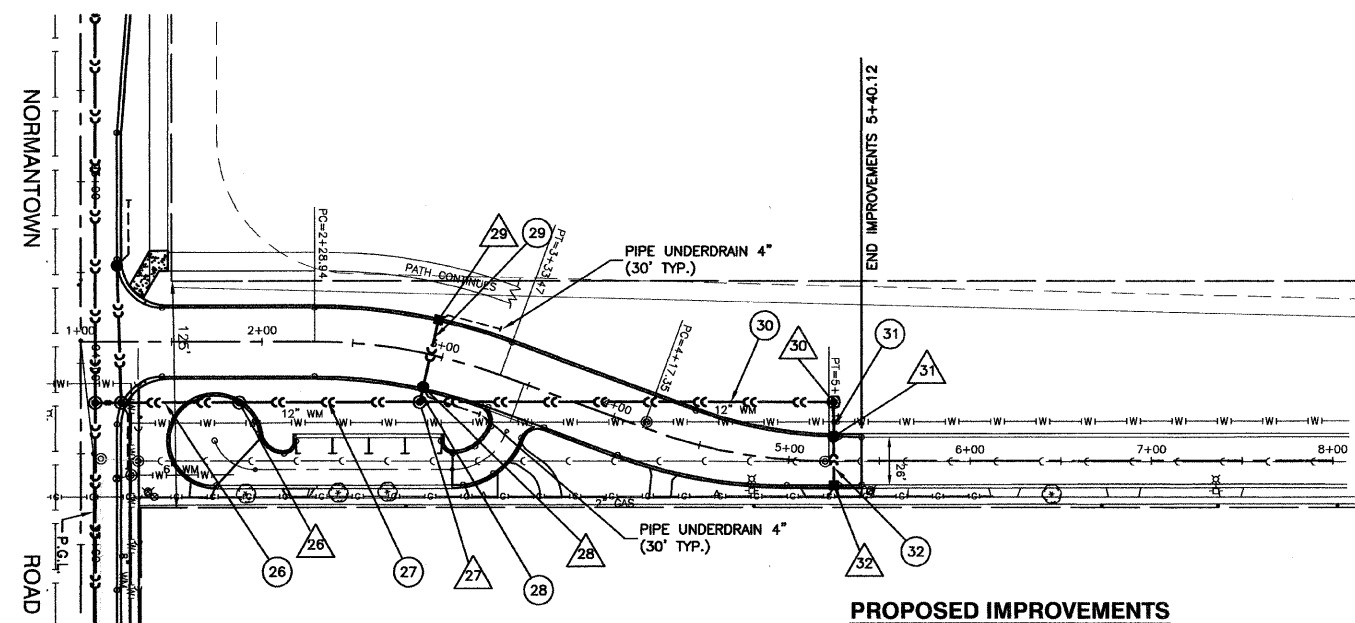
F. A. U. REL.	SECTION	COUNTY	TOTAL SHEETS	SHEET NO.
0281	07-00050-00-FP	WILL	33	15
STA.		TO STA.		
FED. ROAD DIST. NO. 1		FED. AID PROJECT		

CONTRACT #63157



ROGERS AVE.

EXISTING CONDITIONS



ROGERS AVE.

PROPOSED IMPROVEMENTS

PROPOSED STRUCTURES

- 26 STA. 1+87 (33' RT.)
MH TA 4'DIA. T11 F&G
RIM EL.=648.09
N. 15" FL=641.54
S. 15" FL=641.44
- 27 STA. 2+94 (28' RT.)
MH TA 4'DIA. T1F CL
RIM EL.=650.10
W. 12" FL=644.74
N. 15" FL=642.59
S. 15" FL=642.49
- 28 STA. 2+94 (19' RT.)
CB TA 4'DIA. T11 F&G
RIM EL.=649.43
W. 12" FL=645.02
E. 12" FL=644.92
- 29 STA. 2+94 (19' LT.)
INL TA T11 F&G
RIM EL.=649.43
12" FL=645.78
- 30 STA. 5+25 (33' LT.)
MH TA 4'DIA. T1F CL
RIM EL.=654.00
E. 12" FL=644.87
S. 15" FL=644.76
- 31 STA. 5+25 (13' LT.)
MH TA 4'DIA. T11 F&G
RIM EL.=653.07
S. 12" FL=648.86
N. 12" FL=645.25
- 32 STA. 5+25 (13' RT.)
INL TA T11 F&G
RIM EL.=653.07
12" FL=649.40



PROPOSED STORM PIPE

- 26 64'-15" SST2-WMQP @ 2% (50.5)
- 27 100'-15" SST2 @ 0.95% (0)
- 28 9'-12" SST2 @ 2% (2.6)
- 29 38'-12" SST1 @ 2% (7.4)
- 30 228'-15" SST2 @ 0.95% (168.5)
- 31 19'-12" SST2 @ 2% (6.1)
- 32 27'-12" SST2 @ 2% (4.9)

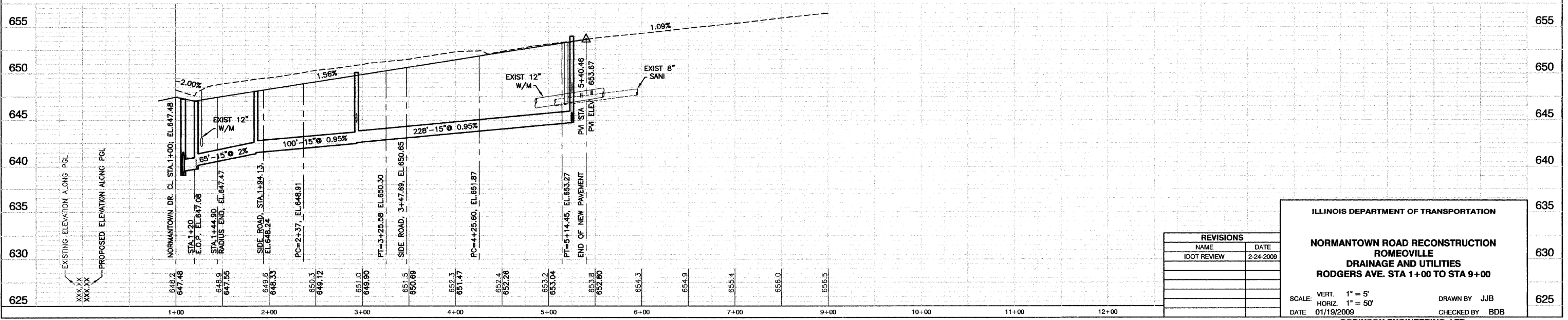
REMOVAL LEGEND

- AB ABANDON STRUCTURE OR PIPE
- F FILL STRUCTURE OR PIPE
- R REMOVE
- ADJ ADJUST FRAME & LID

- NOTE:
- OFFSETS ARE FROM C.R.O.W.
 - QUANTITIES IN () ARE TRENCH BACKFILL
 - ALL RIM ELEVATIONS OF STRUCTURES IN THE PROPOSED CURB LINE ARE GIVEN TO THE EDGE OF PAVEMENT. ALL OTHER RIM ELEVATIONS ARE GIVEN TO THE CENTER OF STRUCTURES.
 - W.M.Q.P. = WATER MAIN QUALITY PIPE
 - STORM FLOWS TO BE MAINTAINED AT ALL TIMES.

BENCHMARKS:

- BENCHMARK #5
ARROW ON HYDRANT FLANGE AT N.E. CORNER ROGERS ROAD AND NORMANTOWN ROAD
ELEVATION= 649.91
- BENCHMARK #7
ARROW ON HYDRANT FLANGE OF 1ST HYDRANT EAST OF GENEVA AVENUE, NORTH SIDE OF NORMANTOWN ROAD
ELEVATION= 649.60



REVISIONS		
NAME	DATE	
IDOT REVIEW	2-24-2009	

ILLINOIS DEPARTMENT OF TRANSPORTATION

**NORMANTOWN ROAD RECONSTRUCTION
ROMEIOVILLE
DRAINAGE AND UTILITIES
RODGERS AVE. STA 1+00 TO STA 9+00**

SCALE: VERT. 1" = 5'
HORIZ. 1" = 50'

DATE: 01/19/2009

DRAWN BY: JJB
CHECKED BY: BDB