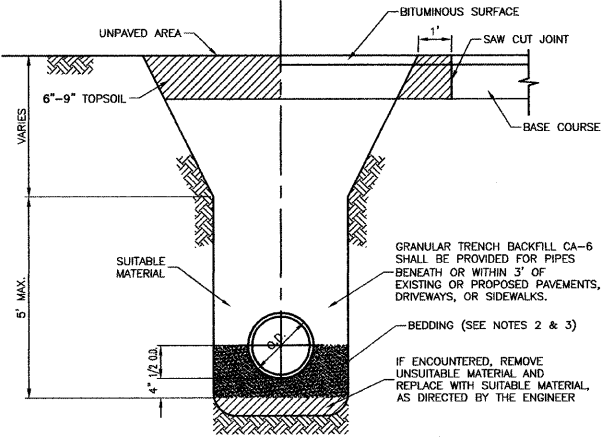
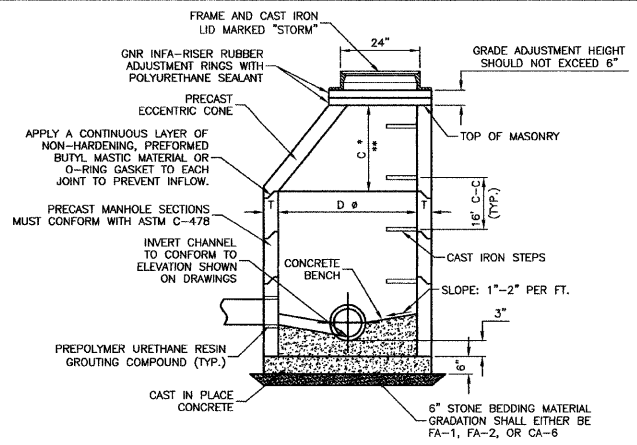


CONTRACT #63157



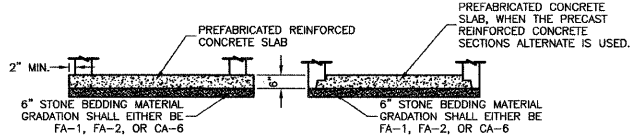
- NOTES:**
- TRENCH SHALL BE IN ACCORDANCE WITH OSHA SAFETY STANDARDS.
 - BEDDING SHALL BE REQUIRED TO BE A MINIMUM THICKNESS EQUAL TO 1/4 OF THE OUTSIDE DIAMETER OF THE PIPE BUT SHALL NOT BE LESS THAN 4". AS A MINIMUM, BEDDING AND HAUNCHING MATERIAL SHALL CONFORM TO THE REQUIREMENTS OF THE "STANDARD SPECIFICATIONS FOR ROAD AND BRIDGE CONSTRUCTION." THE GRADATIONS SHALL EITHER BE FA-1 OR FA-2.
 - WHEN STORM SEWER CONSTRUCTION OCCURS IN COMBINED SEWER AREAS, BEDDING AND HAUNCHING MATERIAL SHALL CONFORM TO THE REQUIREMENTS OF THE "METROPOLITAN WATER RECLAMATION DISTRICT OF GREATER CHICAGO." THE GRADATIONS SHALL EITHER BE CA-11 OR CA-13.

TRENCH BACKFILL DETAIL FOR STORM SEWER



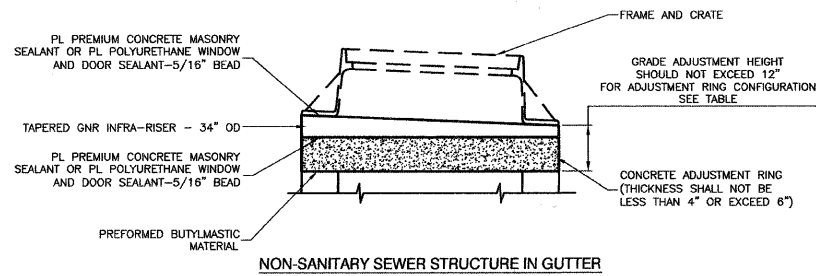
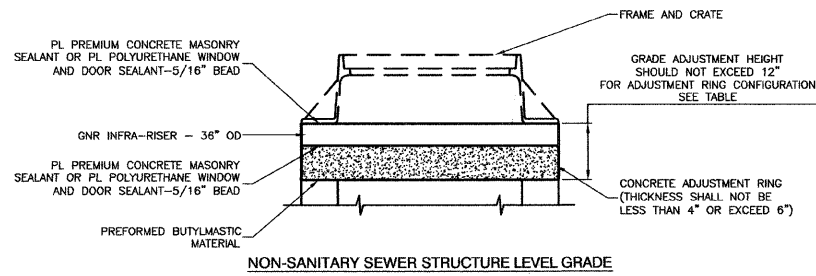
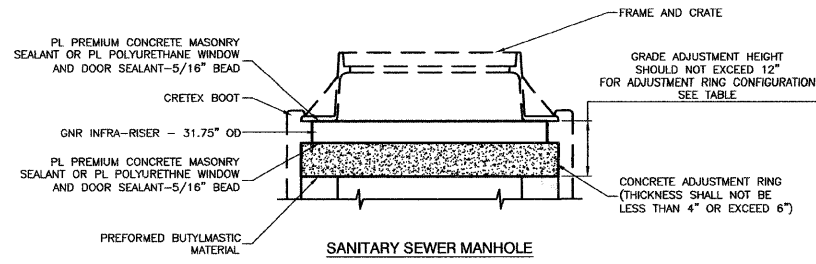
ALTERNATE MATERIALS FOR WALLS	D	C	T
PRECAST REINFORCED CONCRETE SECTION	4'-0"	2'-6"	4'
CAST-IN-PLACE CONCRETE	5'-0"	3'-9"	5'
	4'-0"	2'-6"	6'
	5'-0"	3'-9"	6'

* DIMENSION "C" FOR PRECAST REINFORCED CONCRETE SECTION MAY VARY FROM THE DIMENSION GIVEN $\pm 6"$
 ** SEE DETAIL FOR PRECAST REINFORCED CONCRETE FLAT SLAB TOP.



- NOTES:**
- ECCENTRIC CONES REQUIRED, UNLESS OTHERWISE INDICATED ON DRAWINGS. FLAT SLAB TOPS PERMITTED ONLY FOR MANHOLES TOO SHALLOW FOR CONES.
 - USE 4'-0" FOR SEWER SIZES 8" THRU 21", 5'-0" FOR SEWER SIZES 24" THRU 33" UNLESS OTHERWISE NOTED.

STORM MANHOLE

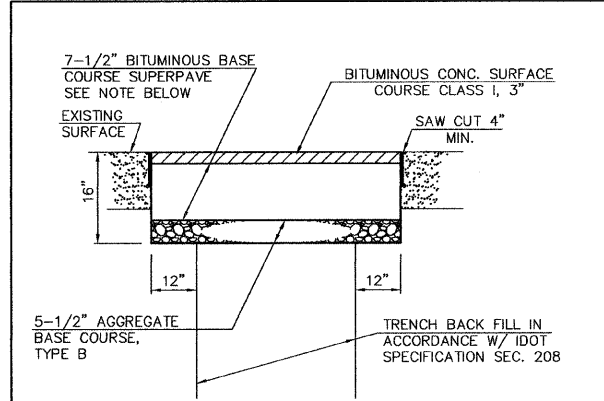


ADJUSTMENT RING DETAIL

ADJUSTMENT RING TABLE

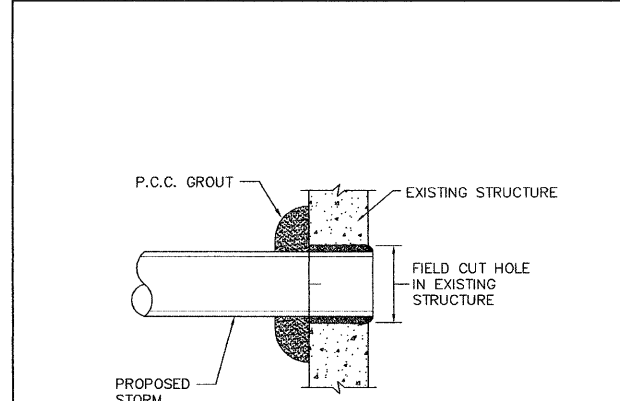
ADJUSTMENT HEIGHT	CONCRETE	RUBBER
0"	-	-
1"	-	1"
2"	-	2"
3"	-	3"
4"	4"	-
5"	4"	1"
6"	4"	2"
7"	4"	3"
8"	4", 4"	-
9"	6"	3"
10"	4", 4"	2"
11"	4", 4"	3"
12"	6", 4"	2"

NOTE: GRADE ADJUSTMENT HEIGHT SHOULD NOT EXCEED 12"



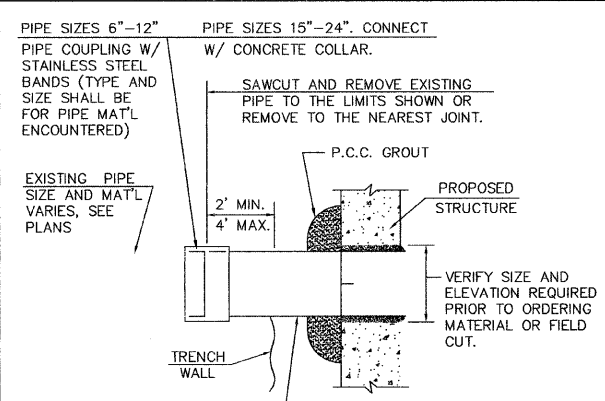
NOTE:
 CONTRACTOR TO PLACE BASE COURSE, 16" THICK TO TOP SURFACE OF EXISTING PAVEMENT TO BE REMOVED AT LOCATIONS SHOWN ON PLANS TO PROVIDE TEMPORARY SURFACING UNTIL PLACEMENT OF PAVEMENT SURFACE. CONTRACTOR TO REMOVE TOP 10-1/2" OF AGGREGATE PRIOR TO PLACEMENT OF BITUMINOUS SURFACE. PAYMENT TO BE AT THE CONTRACT PRICE PER SQUARE YARD AND WORK SHALL INCLUDE ALL LABOR AND MATERIALS REQUIRED TO RESTORE PAVEMENT AS DETAILED, INCLUDING PLACING AND REMOVING THE ADDITIONAL AGGREGATE REQUIRED FOR TEMPORARY SURFACE. BITUMINOUS CONCRETE SURFACE COURSE SHALL BE PLACED IN 2 LIFTS, AND BITUMINOUS BASE COURSE SHALL BE PLACED IN 3 LIFTS.

BITUMINOUS PAVEMENT REPLACEMENT DETAIL
 NOT TO SCALE



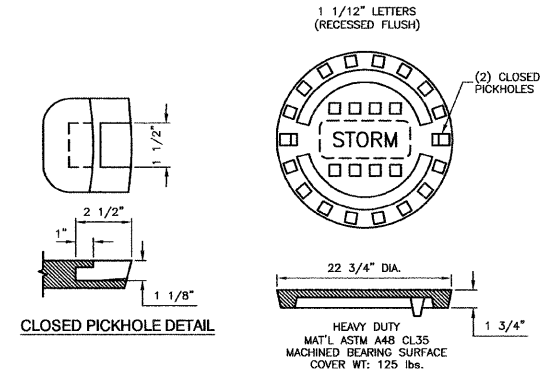
NOTE:
 THE COST OF ALL LABOR, MATERIALS, TOOLS AND EQUIPMENT NECESSARY TO PLACE PIPE INTO EXISTING STRUCTURE AS SHOWN SHALL BE INCLUDED IN THE CONTRACT UNIT PRICE FOR STORM SEWER BEING INSTALLED.

NEW PIPE CONNECTION TO EXISTING STRUCTURE
 NOT TO SCALE



NOTE:
 THE COST OF ALL LABOR, MATERIALS, TOOLS AND EQUIPMENT NECESSARY TO INCORPORATE EXISTING PIPE INTO PROPOSED STRUCTURE, INCLUDING THE PIPE EXTENSION, PIPE REMOVAL, GROUT AND COUPLING OR COLLAR AS DETAILED SHALL BE INCLUDED IN THE CONTRACT UNIT PRICE PER EACH OF THE SIZE ENCOUNTERED.

EXISTING PIPE CONNECTION TO PROPOSED STRUCTURE
 NOT TO SCALE



SPECIAL LETTERED STORM MANHOLE LID*

REVISIONS	
NAME	DATE

ILLINOIS DEPARTMENT OF TRANSPORTATION
 NORMANTOWN ROAD RECONSTRUCTION
 ROMEVILLE
 CONSTRUCTION DETAILS

SCALE: VERT. N/A
 HORIZ. N/A
 DATE: 01/19/2009
 DRAWN BY: JJB
 CHECKED BY: BDB