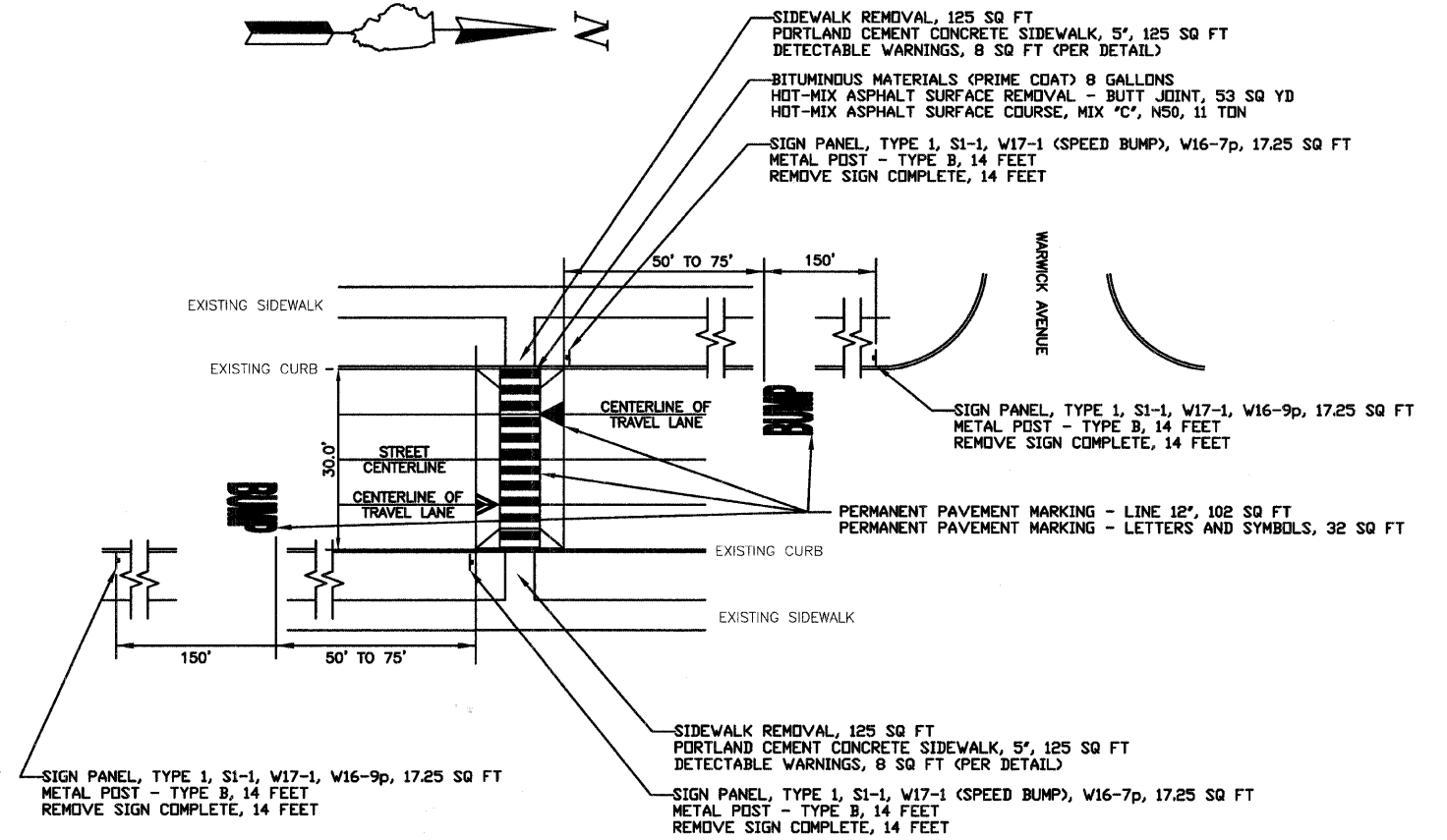
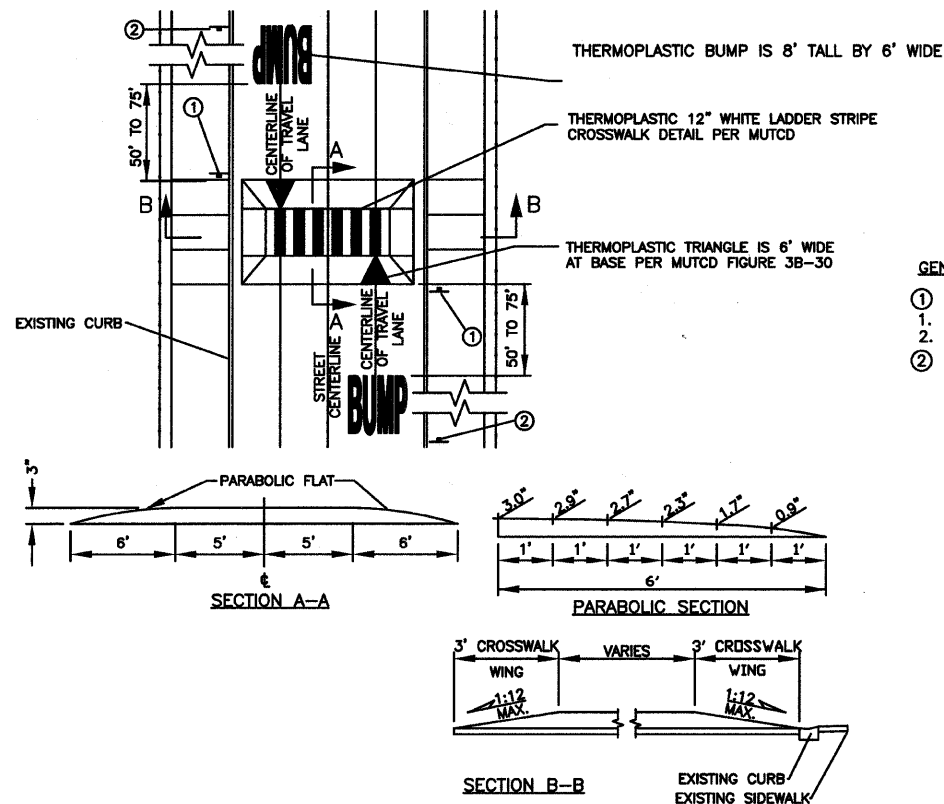


GROVE AVENUE PLAN, 25 MPH
SCALE: 1":30'



EASTERN AVENUE PLAN, 25 MPH
SCALE: 1":30'



GENERAL NOTES:

1. RAISED CROSSWALK SHALL BE CONSTRUCTED OF HOT MIX ASPHALT PER IDOT HMA MIX SELECTION TABLE.
 2. DETECTABLE WARNINGS ARE TO BE SAGE GREEN FROM DETECTILE, 312-213-1507.
- ② SIGNS:
- INSTALL MUTCD STANDARD SIGNS ON EXISTING SIGN POLES. USE S1-1 (36" X 36"), W17-1 ("SPEED BUMP", 30" X 30") AND W16-7p (24" X 12").
- INSTALL MUTCD STANDARD SIGNS ON EXISTING SIGN POLES. USE S1-1 (36" X 36"), W17-1 ("SPEED BUMP", 30" X 30") AND W16-9p (24" X 12").

RAISED CROSSWALK DETAIL

N.T.S.



VILLAGE OF BARRINGTON
200 S. HOUGH ST.
PHONE: 847-304-3460
FAX: 847-381-1056

DESIGNED: DTM
DRAWN: DTM
CHECKED: GS
DATE: 11/21/09

REVISED: 2/6/09
REVISED: 3/26/09
REVISED:
FILE:

VILLAGE OF BARRINGTON, ILLINOIS
SAFE ROUTES TO SCHOOL

PLAN AND DETAIL SHEET

SCALE: 1":30' WHEN PRINTED AT 11"x17" STA. TO STA.

F.A.U. RTE.	SECTION	COUNTY	TOTAL SHEETS	SHEET NO.
	08-00083-00-SP	COOK	5	3
FED. ROAD DIST. NO.	ILLINOIS	CONTRACT NO. 63161		