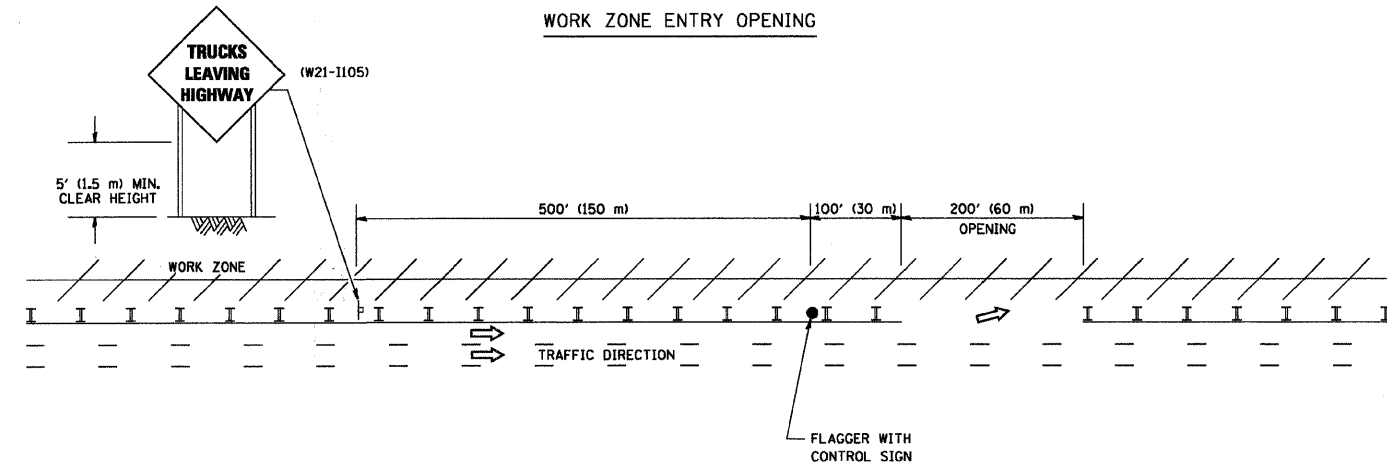
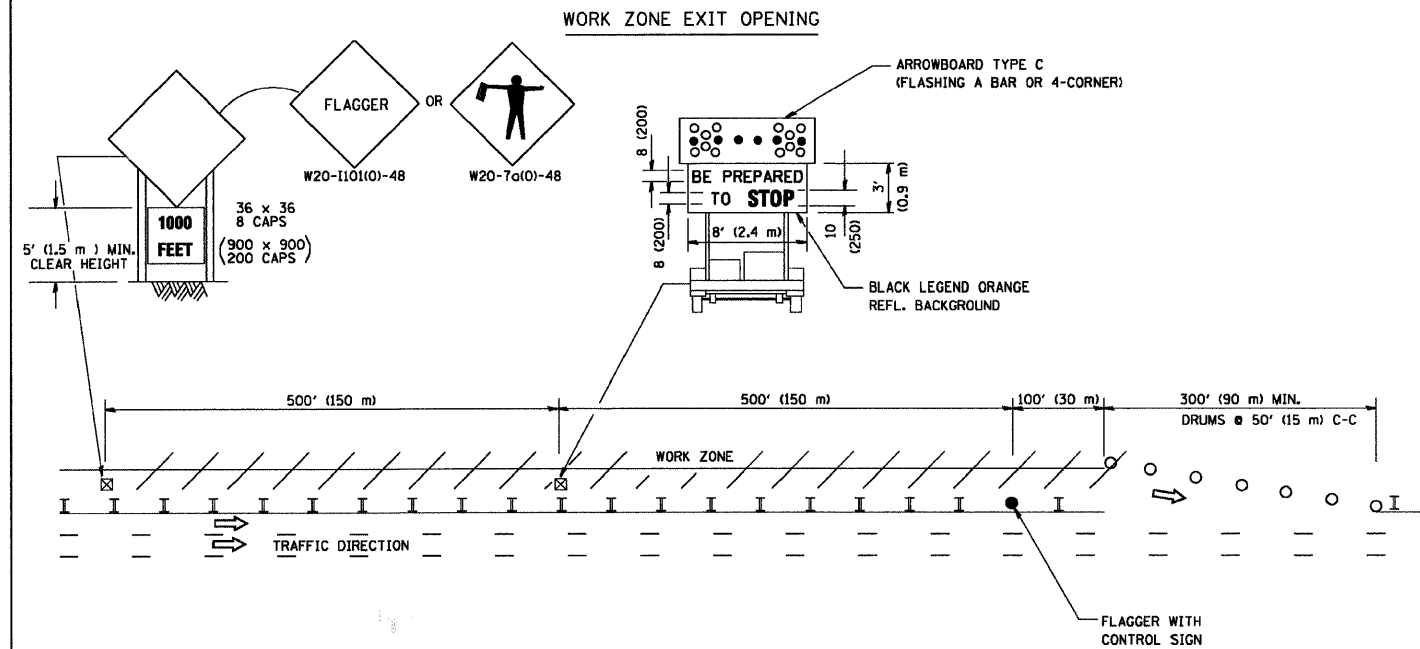


SIGNING FOR FLAGGING OPERATIONS AT WORK ZONE OPENINGS

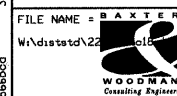


NOTES:

1. The Arrowboard, the Flagger Ahead trailer mounted sign, and the Trucks Leaving Highway sign shall be removed or turned away from traffic and the exit and entry openings shall be closed when the flagging operation ceases.
2. Work Zone Exit Openings should be a minimum of one half mile apart.
3. Exiting the work zone at any place other than at a Work Zone Exit Opening will be prohibited.
4. All vehicles shall enter the work zone at entry openings, using their turn signals to warn motorists

\*F.A.U. 0012 WEST WEGNER ROAD/SOUTH DRIVE  
ALL DIMENSIONS ARE IN INCHES (MILLIMETERS)  
UNLESS OTHERWISE SHOWN

COPYRIGHT © 2008 BY BAXTER & WOODMAN, INC.  
 STATE OF ILLINOIS - PROFESSIONAL DESIGN FIRM  
 5850 S. WILSON AVENUE, SUITE 100  
 CHICAGO, ILLINOIS 60632  
 TEL: 773.291.1000 FAX: 773.291.1001  
 WWW.BAXTERANDWOODMAN.COM



FILE NAME = BAXTER	USER NAME = gaglianob	DESIGNED -	REVISED - D.W.S. 08-98
W:\dsistat\22		DRAWN -	REVISED - J.A.F. 04-03
		CHECKED -	REVISED - J.A.F. 02-06
		DATE -	REVISED - S.P.B. 01-07

STATE OF ILLINOIS  
DEPARTMENT OF TRANSPORTATION

SIGNING FOR FLAGGING OPERATIONS  
AT WORK ZONE OPENINGS

SCALE: NONE SHEET NO. 1 OF 1 SHEETS STA. TO STA.

F.A.U. RTE.	SECTION	COUNTY	TOTAL SHEETS	SHEET NO.
	08-0008-00-RS	MCHENRY	15	14
	TC-18	CONTRACT NO.	63165	
FED. ROAD DIST. NO. 1 ILLINOIS FED. AID PROJECT				