

FOR INDEX OF SHEETS, SEE SHEET NO. 2

FOR INDEX OF HIGHWAY STANDARDS, SEE SHEET NO. 2

PROJECT LOCATED IN THE VILLAGE OF LAKEMOOR

STATE OF ILLINOIS  
DEPARTMENT OF TRANSPORTATION  
DIVISION OF HIGHWAYS

PLANS FOR PROPOSED  
FEDERAL AID HIGHWAY

FAU ROUTE 0012 WEST WEGNER ROAD / SOUTH DRIVE  
WEST WEGNER ROAD / SOUTH DRIVE FROM LILY LAKE ROAD  
TO DARRELL ROAD (COUNTY HIGHWAY 44)

RESURFACING

PROJECT No.: M-9003 (170)

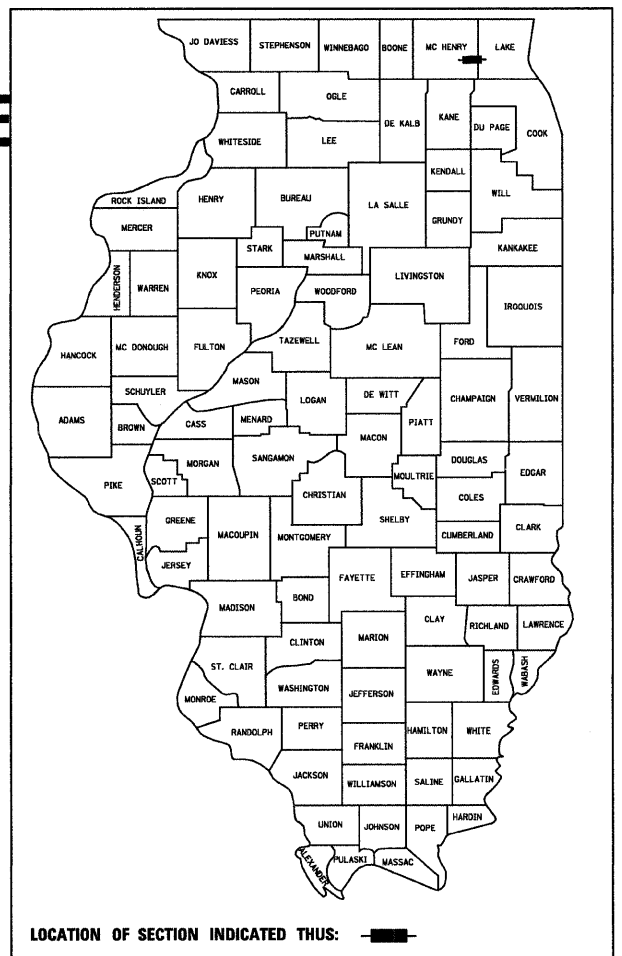
SECTION No.: 08-00008-00-RS

JOB No: C-91-204-09

VILLAGE OF LAKEMOOR

McHENRY/LAKE COUNTY

F.A.U. RTE.	SECTION	COUNTY	TOTAL SHEETS	SHEET NO.
08-00008-00-RS		MCHENRY	15	1
STA.	TO STA.			
FED. ROAD DIST. NO C-91-204-09	ILLINOIS	FED AID PROJECT M-9003 (170)		
* FAU 0012 WEST WEGNER ROAD/SOUTH DRIVE				
CONTRACT NO. 63165				



PROJECT NO.: M-9003 (170)  
FAU 0012 SOUTH DRIVE  
PROJECT ENDS STA. 47+57

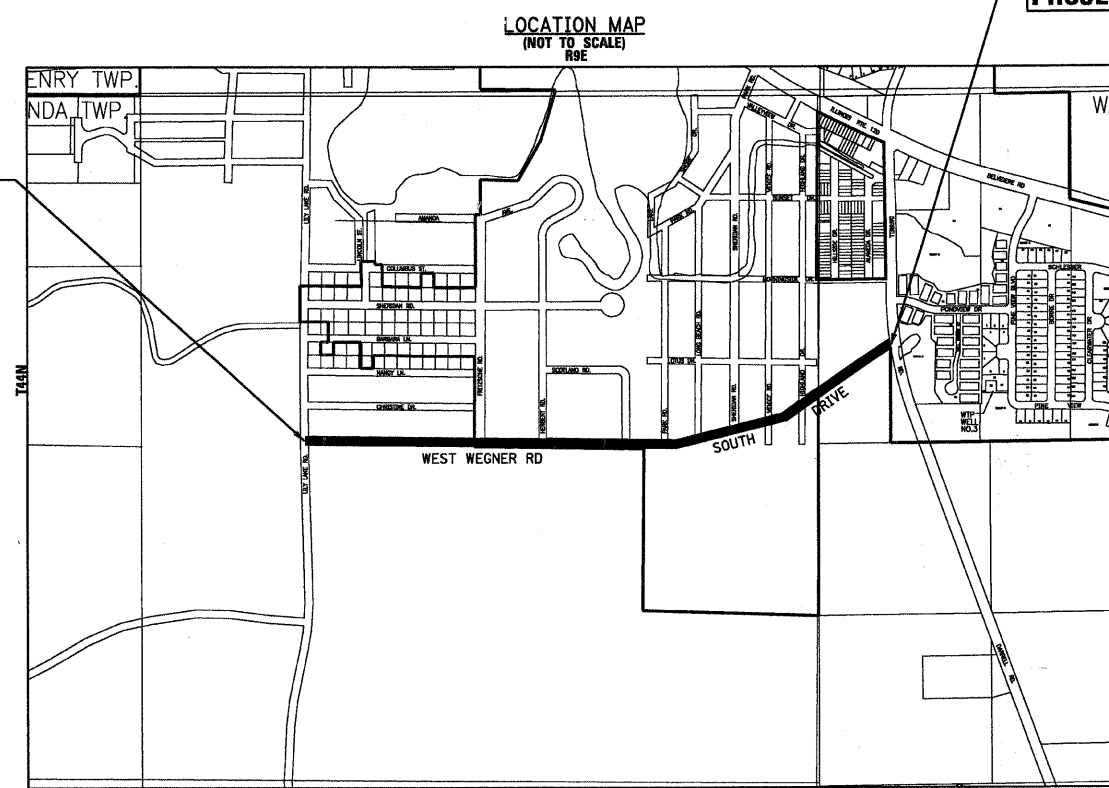
TRAFFIC DATA

WEST WEGNER ROAD

POSTED & DESIGN SPEED LIMIT = 30 MPH

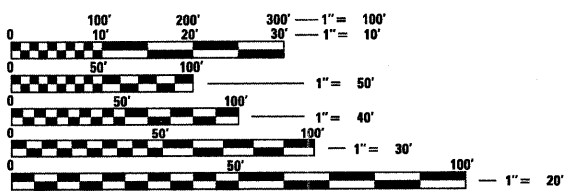
2008 ADT = 1,575

PROJECT NO.: M-9003 (170)  
FAU 0012 WEST WEGNER RD  
PROJECT BEGINS STA. 0+08



NUNDA / WAUCONDA TOWNSHIP  
GROSS LENGTH OF IMPROVEMENT = 4,749 LF OR 0.90 MILES  
NET LENGTH OF IMPROVEMENT = 4,749 LF OR 0.90 MILES

BAXTER & WOODMAN, INC.  
STATE OF ILLINOIS - PROFESSIONAL DESIGN FIRM  
LICENSE NO. - 184-001121 - EXPIRES 4/30/2009



FULL SIZE PLANS HAVE BEEN PREPARED USING STANDARD  
ENGINEERING SCALES. REDUCED SIZED PLANS WILL NOT  
CONFORM TO STANDARD SCALES. IN MAKING MEASUREMENTS  
ON REDUCED PLANS, THE ABOVE SCALES MAY BE USED.

J.U.L.I.E.  
JOINT UTILITY LOCATION INFORMATION FOR EXCAVATION  
1-800-892-0123



TARA A. ORBON  
062-058036  
REGISTERED  
PROFESSIONAL  
ENGINEER  
OF  
STATE OF ILLINOIS  
PROJECT MANAGER  
"LICENSE EXPIRES 11-30-09"

[Signature]  
PROJECT ENGINEER

STATE OF ILLINOIS  
DEPARTMENT OF TRANSPORTATION  
DIVISION OF HIGHWAYS

APPROVED MARCH 12, 2009  
Charles A. Schmitt  
LOCAL AGENCY REPRESENTATIVE

PASSED MARCH 31, 2009  
Chris Holm  
LOCAL ROADS ENGINEER

RELEASING FOR BID  
BASED ON LIMITED  
REVIEW APRIL 2, 2009  
Debra M. O'Keefe  
DEPUTY DIRECTOR OF  
HIGHWAYS, REGION 1 ENGINEER

PRINTED BY THE AUTHORITY  
OF THE STATE OF ILLINOIS

CONTRACT NO. 63165

Burlington, Wisconsin 262.763.7834    Crystal Lake, Illinois 815.459.1260    DeKalb, Illinois 815.787.3111    Itasca, Illinois (Mokena, Illinois) 630.773.1870    Grayslake, Illinois 708.478.2090    Plainfield, Illinois 847.223.5088    Madison, Wisconsin 815.609.7425    Chicago, Illinois 608.347.1542    312.578.0050

(OFFICE WHICH PREPARED PLANS)

B&W PROJECT NO.: 080851    DATE: 3-13-09

COPYRIGHT © 2008 BY BAXTER & WOODMAN, INC.  
 LICENSE NO. 184-001121 - EXPIRES 4/30/2009  
 BUREAU OF LOCAL ROADS AND STREETS: (ALEX HOUSSER, P.E./KEVIN STALLWORTH, P.E.) 847-705-4169 SCHAUMBURG, IL

## GENERAL NOTES

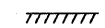

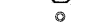
1. ALL CONSTRUCTION SHALL BE DONE IN ACCORDANCE WITH THE DETAILS IN THE PLANS, THE SPECIAL PROVISIONS INCLUDED IN THE CONTRACT DOCUMENTS, AND THE LATEST EDITION OF THE FOLLOWING STATE OF ILLINOIS SPECIFICATIONS: "THE STANDARD SPECIFICATIONS FOR ROAD AND BRIDGE CONSTRUCTION" (REFERRED TO AS THE "STANDARD SPECIFICATIONS"), THE "SUPPLEMENTAL SPECIFICATIONS AND RECURRING SPECIAL PROVISIONS", THE "MANUAL ON UNIFORM TRAFFIC CONTROL DEVICES FOR STREETS AND HIGHWAYS" AND THE "MANUAL OF TEST PROCEDURES FOR MATERIALS".
2. THE CONTRACTOR SHALL HAVE THE RESPECTIVE UTILITY COMPANIES FIELD LOCATE ALL THEIR FACILITIES PRIOR TO BEGINNING CONSTRUCTION. THE CONTRACTOR SHALL ALSO VERIFY THE DEPTHS OF THE EXISTING UTILITIES IF NECESSARY. ALL RELOCATION OR LOWERING OF UTILITIES SHALL BE COORDINATED BY THE CONTRACTOR.
3. THE CONTRACTOR SHALL BE RESPONSIBLE FOR THE PROTECTION OF ALL UNDERGROUND OR SURFACE UTILITIES EVEN THOUGH THEY MAY NOT BE SHOWN ON THE PLANS. ANY UTILITY THAT IS DAMAGED DURING CONSTRUCTION SHALL BE REPAIRED OR REPLACED AT THE CONTRACTOR'S EXPENSE TO THE SATISFACTION OF THE ENGINEER OR VILLAGE.
4. THE CONTRACTOR SHALL NOTIFY THE ENGINEER AT LEAST 48 HOURS IN ADVANCE OF BEGINNING WORK TO OBTAIN VILLAGE UTILITY LOCATIONS AND SHALL COORDINATE ALL CONSTRUCTION OPERATIONS WITH THE ENGINEER.
5. MATERIALS RESULTING FROM THE REMOVAL OF PAVEMENT, DRIVEWAYS, CURB AND GUTTER, HOT-MIX ASPHALT SURFACES, SIDEWALKS AND EXCAVATION FOR NEW SIDEWALKS ETC. SHALL BE REMOVED AT THE END OF EACH DAY TO AN APPROVED SITE. IN THE JUDGMENT OF THE VILLAGE, SHOULD IT BE NECESSARY TO REMOVE SUCH MATERIALS, THE VILLAGE WILL HAVE THE MATERIAL REMOVED AND THE CONTRACTOR WILL BE BILLED (CHARGED) ACCORDINGLY.
6. THE CONTRACTOR IS RESPONSIBLE FOR OBTAINING ALL WATER REQUIRED FOR THIS PROJECT FROM AN OFFSITE LOCATION.
7. IT WILL BE THE CONTRACTOR'S RESPONSIBILITY TO NOTIFY RESIDENTS AND THE VILLAGE WHEN ACCESS TO THEIR DRIVEWAYS WILL BE TEMPORARILY CLOSED DUE TO DRIVEWAY REPLACEMENT. THE CONTRACTOR SHALL DISTRIBUTE NOTICES PROVIDED BY THE VILLAGE TO RESIDENTS. EVERY EFFORT SHALL BE MADE TO ACCOMMODATE ACCESS TO THESE PROPERTIES INCLUDING KNOCKING ON DOORS WHEN DRIVEWAYS ARE ABOUT TO BE CLOSED.
8. THE CONTRACTOR SHALL PROTECT AND CAREFULLY PRESERVE ALL SECTION OR SUBSECTION MONUMENTS OR PROPERTY OR REFERENCE MARKERS UNTIL THE OWNERS, HIS AGENT OR AN AUTHORIZED SURVEYOR HAS WITNESSED OR OTHERWISE REFERENCED THEIR LOCATIONS.
9. THE CONTRACTOR SHALL NOTIFY IDOT BUREAU OF MATERIALS (PHONE 847-705-4337) AT LEAST 24 HOURS PRIOR TO THE PLACEMENT OF HMA OR CONCRETE.
10. ANY SIGNS OR MAILBOXES THAT ARE IN CONFLICT WITH THE PROPOSED CONSTRUCTION SHALL BE REMOVED AND REPLACED IN ACCORDANCE WITH VILLAGE STANDARDS AND INCLUDED IN THE COST OF THE CONTRACT. MAIL SERVICE SHALL BE MAINTAINED AT ALL TIMES.
11. EXISTING PAVEMENT, DRIVEWAY PAVEMENT, CURB AND GUTTER AND SIDEWALK TO REMAIN IN PLACE SHALL BE SAW CUT FULL DEPTH TO PROVIDE A NEAT VERTICAL FACE BETWEEN THE PROPOSED AND EXISTING AND SHALL BE INCLUDED IN THE PRICE OF THE APPROPRIATE REMOVAL PAY ITEM.
12. THE CONTRACTOR SHALL PROVIDE AND INSTALL TWO (2) WEIGHTED SANDBAGS ON EACH TYPE I OR TYPE II BARRICADE USED. ONE (1) WEIGHTED SANDBAG SHALL BE PLACED ACROSS EACH BOTTOM RAIL.
13. THE PRIME COAT APPLICATION RATE SHALL BE 0.1 GAL/SY. THE MC-30 PRIME COAT APPLICATION RATE SHALL BE 0.3 GAL/SY.
14. THE LOCATIONS OF THE CLASS D PATCHES SHALL BE DETERMINED BY THE ENGINEER IN THE FIELD.
15. ALL AGGREGATE USED ON THIS PROJECT SHALL BE CRUSHED MATERIAL.
16. THE QUANTITIES FOR PATCHING WILL NOT EXCEED THE AMOUNT LISTED IN THE SUMMARY OF QUANTITIES.
17. THE DAYS PAVING OPERATION SHALL RESULT IN A SINGLE TRANSVERSE JOINT. ANY COLD LONGITUDINAL JOINTS WILL NOT BE ACCEPTED. PROVIDING A SINGLE TRANSVERSE JOINT SHALL BE ACCOMPLISHED BY PAVING ONE LANE OF SUFFICIENT LENGTH THAT WILL ALLOW FOR THE PAVING OF THE ADJACENT LANE IN THE SAME DAY.

18. ON STREETS TO BE FULL WIDTH MILLED (2" OR MORE), THE STRUCTURES IN THE PAVEMENT SHALL BE ADJUSTED IN ACCORDANCE WITH THE IDOT DETAIL "DETAILS FOR FRAMES AND LIDS ADJUSTMENT WITH MILLING". THIS WORK SHALL BE PAID FOR AT THE CONTRACT UNIT PRICE FOR FRAME AND LIDS TO BE ADJUSTED (SPECIAL).
19. THE CONTRACTOR SHALL UTILIZE A MECHANICAL SWEEPER TO CLEAN STREETS AFFECTED BY CONTRACTORS OPERATIONS, INCLUDING HAUL ROUTES, AT LEAST TWICE PER WEEK AND ADDITIONALLY AS DIRECTED BY THE ENGINEER. THIS WORK SHALL BE INCLUDED IN THE COST OF CONSTRUCTION.
20. NO DAMAGE TO PARKWAYS IS PLANNED AS PART OF THESE IMPROVEMENTS. ANY AND ALL RESTORATION OF DAMAGED PARKWAYS SHALL CONSIST OF NECESSARY SUB-GRADE MATERIAL AS APPROVED BY THE ENGINEER, TOPSOIL 4-INCH AND NATIVE SOD IN ACCORDANCE WITH SECTION 1081.03. RESTORATION SHALL BE INCLUDED IN THE PAY ITEM WHICH CAUSED THE DISTURBANCE.
21. AREA REFLECTIVE CRACK CONTROL TREATMENT SHALL BE SYSTEM A. WHILE PLACING THE AREA REFLECTIVE CRACK CONTROL TREATMENT, FINE AGGREGATE SHALL BE READILY AVAILABLE FOR USE OVER THE PAVEMENT FABRIC WHEN EXCESSIVE BLEEDING OF THE ASPHALT IS IMMINENT. THE FINE AGGREGATE SHALL BE INCLUDED IN THE PAY ITEM FOR AREA REFLECTIVE CRACK CONTROL TREATMENT.
22. IN THE AREAS WHERE SIDEWALK IS TO BE REMOVED AND REPLACED, THE REMOVAL AND DISPOSAL OF ANY ADDITIONAL MATERIAL REQUIRED TO ESTABLISH THE PROPOSED SIDEWALK SUBGRADE ELEVATION SHALL BE INCLUDED IN THE PAY ITEM FOR SIDEWALK REMOVAL.

## INDEX OF SHEETS

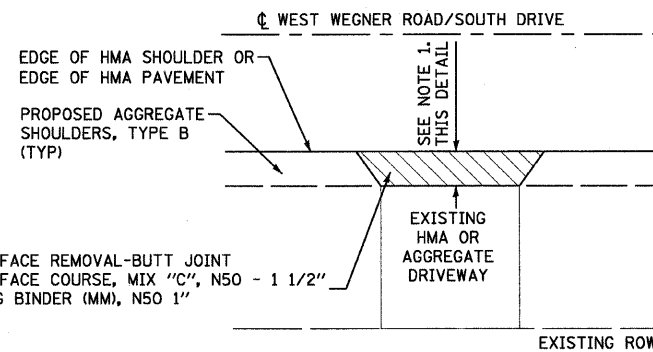
SHEET NO.	TITLE
1	COVER SHEET
2	INDEX OF SHEETS, HIGHWAY STANDARDS, AND GENERAL NOTES
3	SUMMARY OF QUANTITIES AND SCHEDULE OF QUANTITIES
4	TYPICAL SECTIONS AND HMA MIXTURE REQUIREMENTS
5 - 9	PLAN - WEST WEGNER ROAD/SOUTH DRIVE
10	DISTRICT 1 DETAIL - BD-08 DETAILS FOR FRAMES AND LIDS ADJUSTMENT WITH MILLING
11	DISTRICT 1 DETAIL - BD-32 BUTT JOINTS AND HMA TAPER DETAILS
12	DISTRICT 1 DETAIL - TC-10 TRAFFIC CONTROL AND PROTECTION FOR SIDE ROADS, INTERSECTIONS, AND DRIVEWAYS
13	DISTRICT 1 DETAIL - TC-13 DISTRICT ONE TYPICAL PAVEMENT MARKINGS
14	DISTRICT 1 DETAIL - TC-18 SIGNING FOR FLAGGING OPERATIONS AT WORK ZONE OPENINGS
15	DISTRICT 1 DETAIL - TC-22 ARTERIAL ROAD INFORMATION SIGN

## LEGEND

	BUTT JOINT OR DRIVEWAY BUTT JOINT
	FRAME AND LID TO BE ADJUSTED (SPECIAL)
	MANHOLE

## HIGHWAY STANDARDS

000001-05	STANDARD SYMBOLS, ABBREVIATIONS, AND PATTERNS
424001-05	CURB RAMPS FOR SIDEWALKS
442201-03	CLASS C AND D PATCHES
482011-03	HMA SHLD. STRIPS/SHLDS. WITH RESURFACING OR WIDENING AND RESURFACING PROJECTS
701011-02	OFF-RD MOVING OPERATIONS, 2L, 2W DAY ONLY
701311-03	LANE CLOSURE, 2L 2W, MOVING OPERATIONS-DAY ONLY
701501-05	URBAN LANE CLOSURE, 2L, 2W, UNDIVIDED
701901-01	TRAFFIC CONTROL DEVICES
780001-02	TYPICAL PAVEMENT MARKINGS



HMA SURFACE REMOVAL-BUTT JOINT  
HMA SURFACE COURSE, MIX "C", N50 - 1 1/2"  
LEVELING BINDER (MM), N50 1"

- NOTES: 1. 5' MIN WHEN MATCHING EXISTING HMA DRIVEWAY  
3' MIN. WHEN MATCHING EXISTING AGGREGATE DRIVEWAY

### HMA DRIVEWAY DETAIL

NO SCALE

\*F.A.U. 0012 WEST WEGNER ROAD/SOUTH DRIVE

COPYRIGHT © 2008 BY BAXTER & WOODMAN, INC.  
 STATE OF ILLINOIS - PROFESSIONAL DESIGN FIRM  
 LICENSE NO. 08-00008-00-RS  
 3/2/2009  
 11:41:08 AM  
 I:\Users\WOODMAN\Documents\080008-00-RS\080008-00-RS.dwg  
 3/2/2009 11:41:08 AM



USER NAME = 566bad	DESIGNED - JGH	REVISED -
FILE NAME = 080008-00-RS.dwg	DRAWN - BCD	REVISED -
PLOT DATE = 3/2/2009	CHECKED - TAO	REVISED -
	DATE - 3-13-09	REVISED -

**VILLAGE OF LAKEMOOR, ILLINOIS**  
**FAU 0012 WEST WEGNER ROAD/SOUTH DRIVE**  
**STP (LAPP)IMPROVEMENTS**

**INDEX OF SHEETS, HIGHWAY STANDARDS, LEGEND,**  
**DETAILS AND GENERAL NOTES**

SCALE: NONE

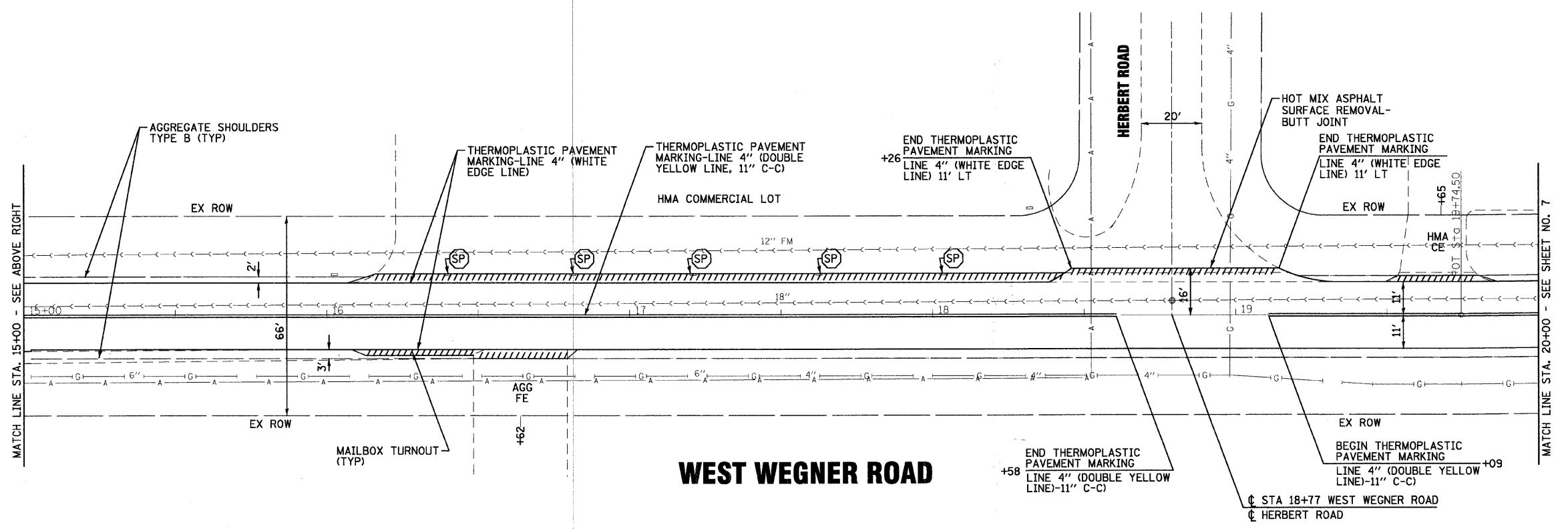
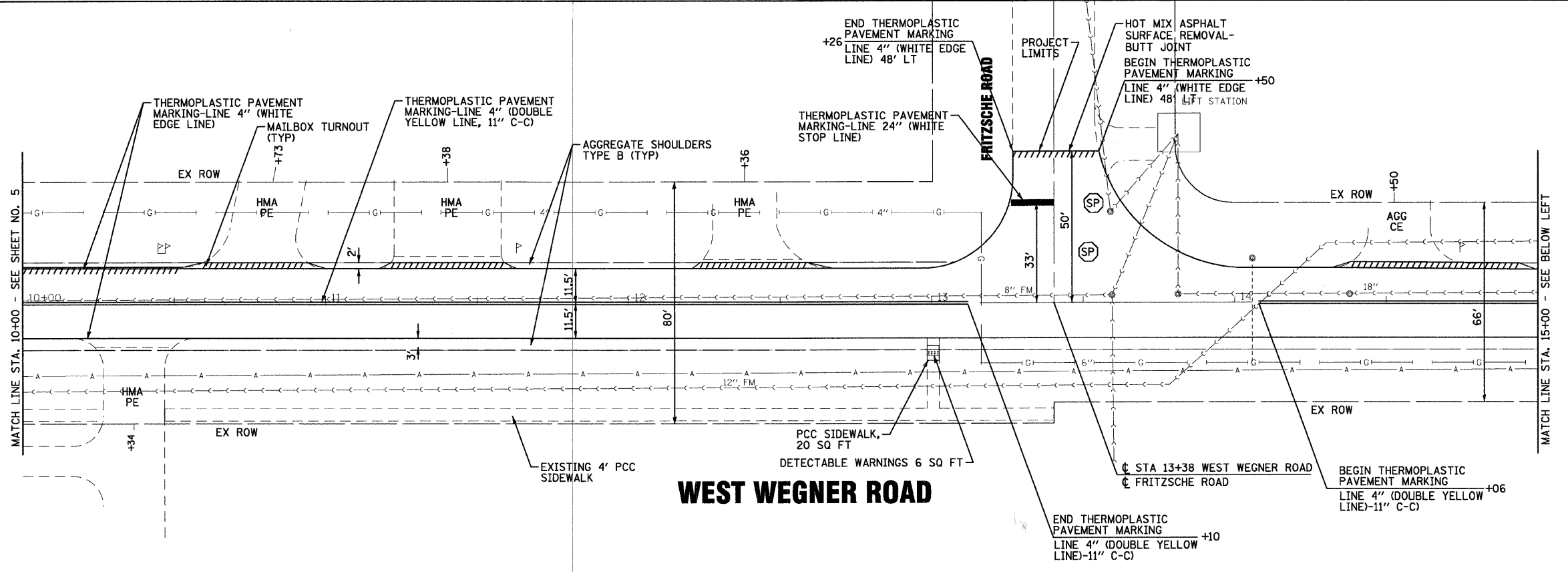
STA. TO STA.

F.A. RTE.	SECTION	COUNTY	TOTAL SHEETS	SHEET NO.
08-00008-00-RS		MCHENRY	15	2
FED. ROAD DIST. NO.			CONTRACT NO. 63165	
C-91-204-09			ILLINOIS	
			FED. AID PROJECT M-9003(170)	









COPYRIGHT © 2008 BY BAXTER & WOODMAN, INC.  
 STATE OF ILLINOIS - PROFESSIONAL DESIGN FIRM  
 LICENSE NO. 08-00008-00-RS  
 PROJECT NO. 08-00008-00-RS  
 DATE: 3/2/2009



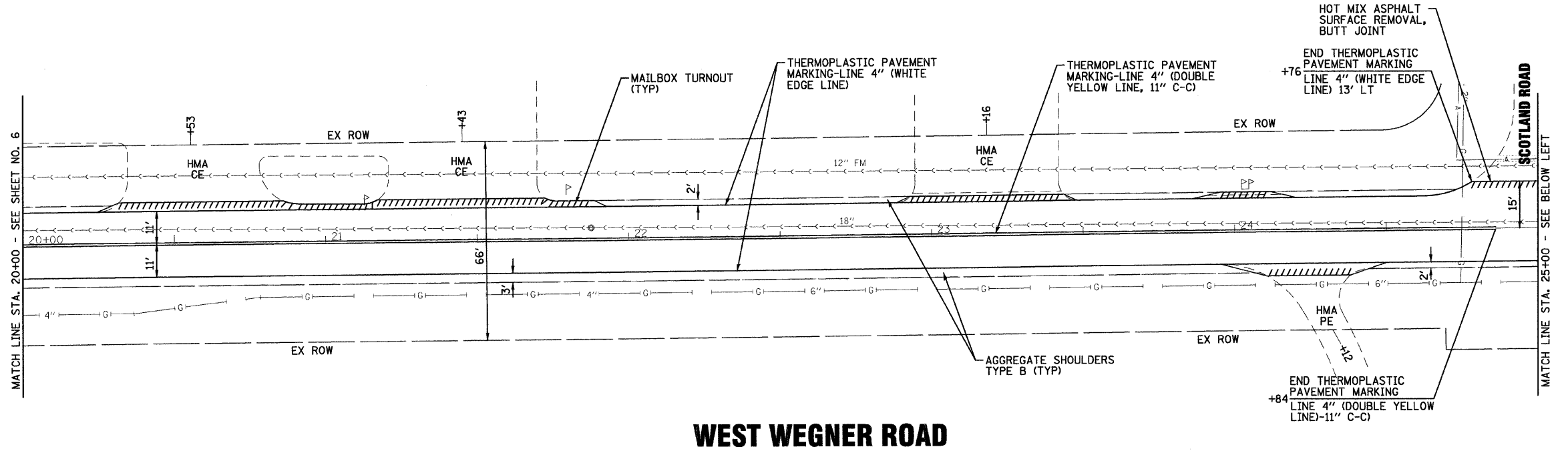
USER NAME = 566bod	DESIGNED - JGH	REVISED -
FILE NAME = 080851-Plan02.sht	DRAWN - BCD	REVISED -
PLOT DATE = 3/2/2009	CHECKED - TAO	REVISED -
	DATE - 3-13-09	REVISED -

**VILLAGE OF LAKEMOOR, ILLINOIS**  
**FAU 0012 WEST WEGNER ROAD/SOUTH DRIVE**  
**STP (LAPP) IMPROVEMENTS**

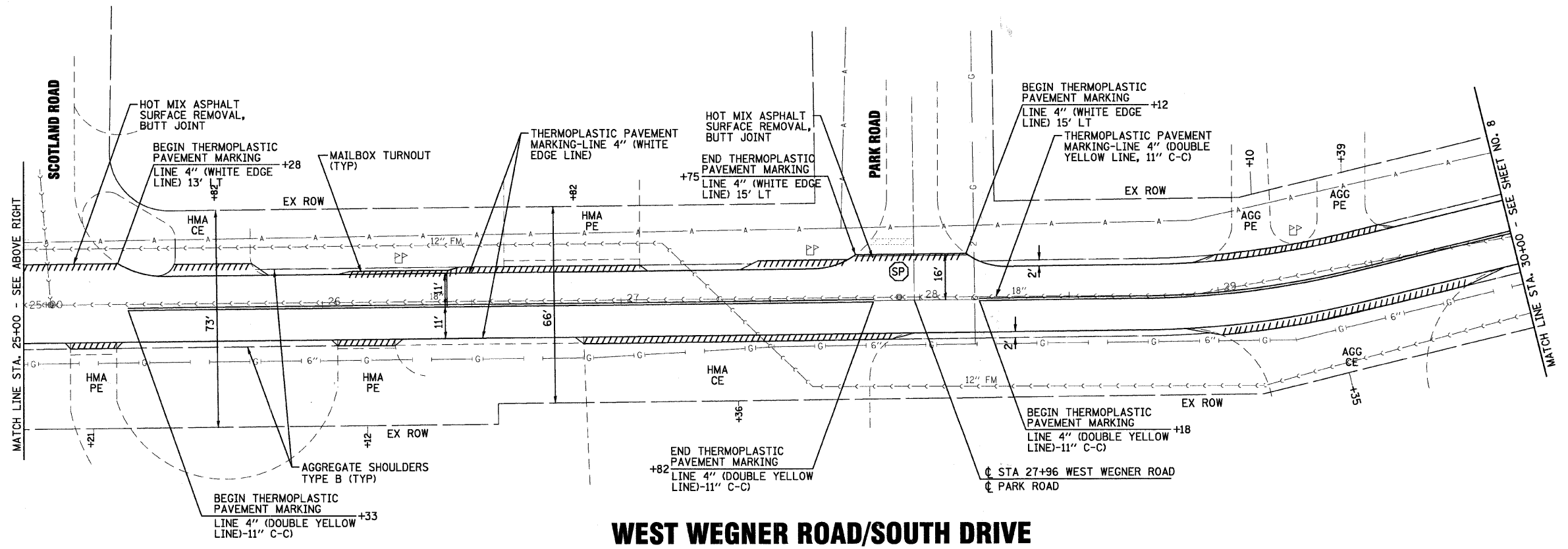
**PLAN - WEST WEGNER ROAD/SOUTH DRIVE**  
 SCALE: 1"=20'  
 STA. 10+00 TO STA. 20+00

F.A. RTE.	SECTION	COUNTY	TOTAL SHEETS	SHEET NO.
C-91-204-09	08-00008-00-RS	MCHENRY	15	6
FED. ROAD DIST. NO.		CONTRACT NO.		
ILLINOIS		63165		
FED. AID PROJECT M-9003(10)				

\*F.A.U. 0012 WEST WEGNER ROAD/SOUTH DRIVE



**WEST WEGNER ROAD**



**WEST WEGNER ROAD/SOUTH DRIVE**

COPYRIGHT © 2008 BY BAXTER & WOODMAN, INC.  
 STATE OF ILLINOIS - PROFESSIONAL DESIGN FIRM  
 LICENSE NO. 08-00008-00-RS  
 11. WILSON COURT, BLOOMINGTON, ILLINOIS 61710  
 312.328.2000



USER NAME = 566bod	DESIGNED - JGH	REVISED -
FILE NAME = 080851-Plan03.sht	DRAWN - BCD	REVISED -
PLOT DATE = 3/2/2009	CHECKED - TAO	REVISED -
	DATE - 3-13-09	REVISED -

**VILLAGE OF LAKEMOOR, ILLINOIS**  
**FAU 0012 WEST WEGNER ROAD/SOUTH DRIVE**  
**STP (LAPP) IMPROVEMENTS**

**PLAN - WEST WEGNER ROAD/SOUTH DRIVE**

SCALE: 1"=20'      STA. 20+00      TO STA. 30+00

F.A. RTE.	SECTION	COUNTY	TOTAL SHEETS	SHEET NO.
C-91-204-09	08-00008-00-RS	McHENRY	15	7
FED. ROAD DIST. NO.		CONTRACT NO.		63165
C-91-204-09		ILLINOIS		FED. AID PROJECT M-9003(170)

\*F.A.U. 0012 WEST WEGNER ROAD/SOUTH DRIVE

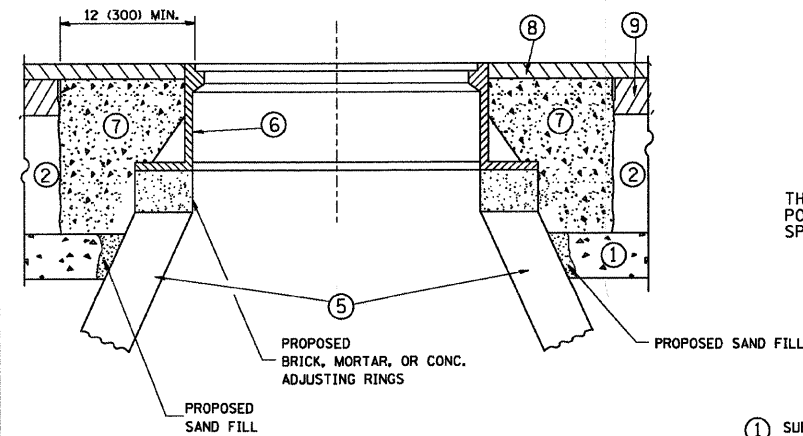
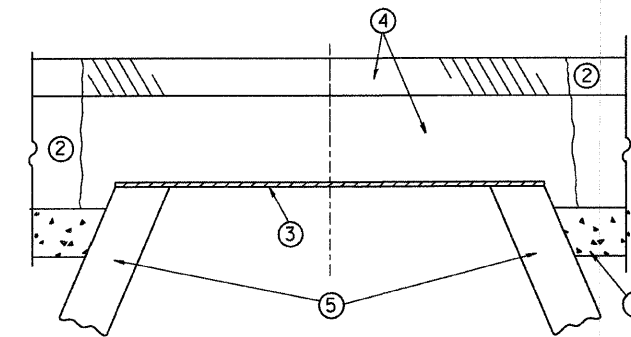












**CONSTRUCTION PROCEDURES**

**STAGE 1 (BEFORE PAVEMENT MILLING)**

- A) REMOVE A MINIMUM OF 12 (300) OF THE PAVEMENT FROM AROUND THE STRUCTURE.
- B) REMOVE THE EXISTING FRAME AND LID FROM THE STRUCTURE.
- C) COVER THE STRUCTURE OPENING WITH A 36 (900) DIAMETER METAL PLATE.
- D) BACKFILL WITH CRUSHED STONE AND A MINIMUM 1/2 (40) THICK HMA SURFACE MIX APPROVED BY THE ENGINEER.

**STAGE 2 (AFTER PAVEMENT MILLING)**

- A) REMOVE THE HMA SURFACE MIX AND CRUSHED STONE.
- B) INSTALL THE FRAME AND LID; ADJUST THE FRAME TO ITS FINAL SURFACE ELEVATION.
- C) THE SURROUNDING SPACE SHALL BE FILLED WITH CLASS SI CONCRETE, OR HMA SURFACE COURSE OR HMA BINDER COURSE TO THE ELEVATION OF THE SURFACE OF THE EXISTING BASE COURSE OR THE BINDER COURSE.

THE PROCEDURE EXPLAINED ABOVE SHALL CONFORM TO THE APPLICABLE PORTIONS OF SECTIONS 353, 406, 602, AND 603 OF THE STANDARD SPECIFICATIONS.

**LEGEND**

- ① SUB-BASE GRANULAR MATERIAL
- ② EXISTING PAVEMENT
- ③ 36 (900) DIAMETER METAL PLATE
- ④ PROPOSED CRUSHED STONE AND HMA SURFACE MIX
- ⑤ EXISTING STRUCTURE
- ⑥ FRAME AND LID (SEE NOTES)
- ⑦ CLASS SI CONCRETE, HMA SURFACE COURSE OR HMA BINDER COURSE
- ⑧ PROPOSED HMA SURFACE COURSE
- ⑨ PROPOSED HMA BINDER COURSE

**LOCATION OF STRUCTURES:**

THE CONTRACTOR WILL BE REQUIRED TO KEEP A RECORD OF THE LOCATIONS OF THE BURIED STRUCTURES ACCORDING TO THE STATION AND DISTANCE LEFT OR RIGHT OF THE CENTERLINE OF PAVEMENT. UPON COMPLETION OF THE WORK, THE CONTRACTOR WILL DELIVER THE RECORD TO THE ENGINEER.

**BASIS OF PAYMENT:** THIS WORK WILL BE PAID FOR AT THE CONTRACT UNIT PRICE PER EACH FOR "FRAMES AND LIDS TO BE ADJUSTED, SPECIAL"  
NEW FRAMES AND LIDS, WHEN SPECIFIED, WILL BE PAID FOR SEPARATELY.

**NOTES:**

EXISTING BROKEN FRAMES AND LIDS SHALL BE REMOVED AND DISPOSED OF BY THE CONTRACTOR AND SHALL BE REPLACED AS DIRECTED BY THE ENGINEER. REPLACEMENT FRAMES AND LIDS WILL BE PAID FOR IN ACCORDANCE WITH ARTICLE 109.04 OF THE STANDARD SPECIFICATIONS UNLESS A SEPARATE PAY ITEM HAS BEEN PROVIDED.

IF THE EXISTING LIDS ARE OPEN, THE FRAME WILL BE ADJUSTED TO THE ELEVATION OF THE MILLED PAVEMENT SURFACE PRIOR TO THE MILLING OPERATION. THE FRAME WILL NOT BE REMOVED AND COVERED BY THE METAL PLATE.

CITY OF CHICAGO CASTINGS ARE THE PROPERTY OF THE CITY AND THE CONTRACTOR SHALL NOTIFY THE CITY FOR REMOVAL AND DISPOSITION OF THE CASTINGS.

THE METAL PLATE USED TO COVER THE STRUCTURE SHALL REMAIN THE PROPERTY OF THE CONTRACTOR.

WHEN STRUCTURES ARE TO BE ADJUSTED OR RECONSTRUCTED, THE LOWERING AND RAISING OF THE FRAMES AND LIDS WILL NOT BE PAID FOR SEPARATELY BUT WILL BE INCLUDED IN THE COST OF THE CORRESPONDING PAY ITEM.

**DETAILS FOR FRAMES AND LIDS ADJUSTMENT WITH MILLING**

\*F.A.U. 0012 WEST WEGNER ROAD/SOUTH DRIVE  
ALL DIMENSIONS ARE IN INCHES (MILLIMETERS) UNLESS OTHERWISE SHOWN

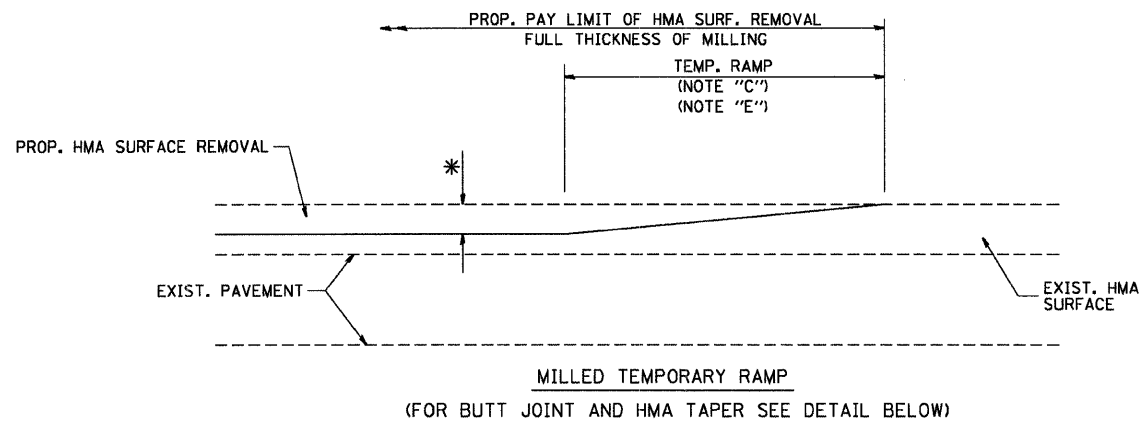
FILE NAME = W:\d\stata\22x34\bd88.dgn	USER NAME = gaglionobt	DESIGNED - R. SHAH	REVISED - R. SHAH 03-10-95
		DRAWN -	REVISED - A. ABBAS 03-21-97
		CHECKED -	REVISED - R. WIEDEMAN 05-14-04
		DATE - 10-25-94	REVISED - R. BORO 01-01-07

**STATE OF ILLINOIS  
DEPARTMENT OF TRANSPORTATION**

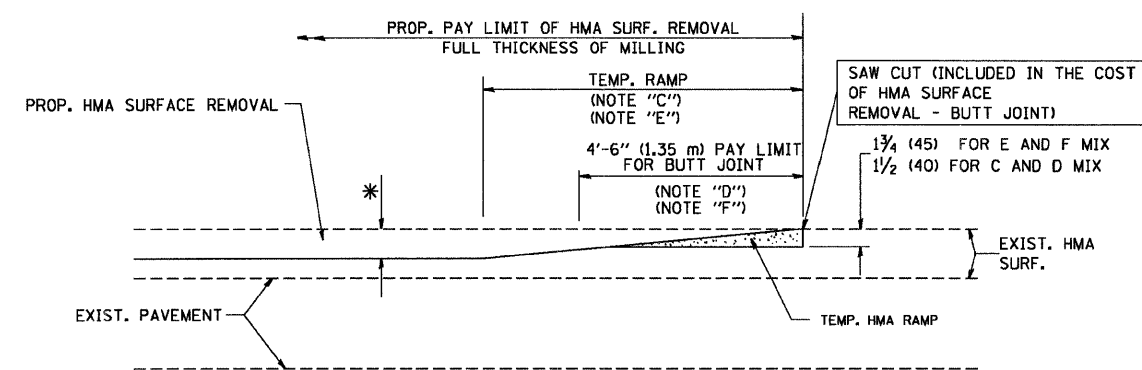
**DETAILS FOR  
FRAMES AND LIDS ADJUSTMENT WITH MILLING**

SCALE: NONE SHEET NO. 1 OF 1 SHEETS STA. TO STA.

F.A.U. RTE.	SECTION	COUNTY	TOTAL SHEETS	SHEET NO.
•	08-0008-00-RS	MCHENRY	15	10
BD600-03 (BD-8)			CONTRACT NO. 63165	
FED. ROAD DIST. NO. 1   ILLINOIS   FED. AID PROJECT				

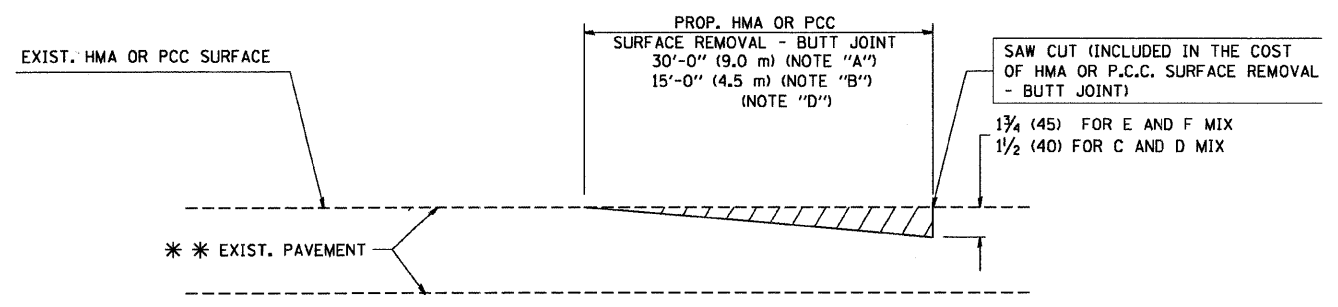


**OPTION 1**

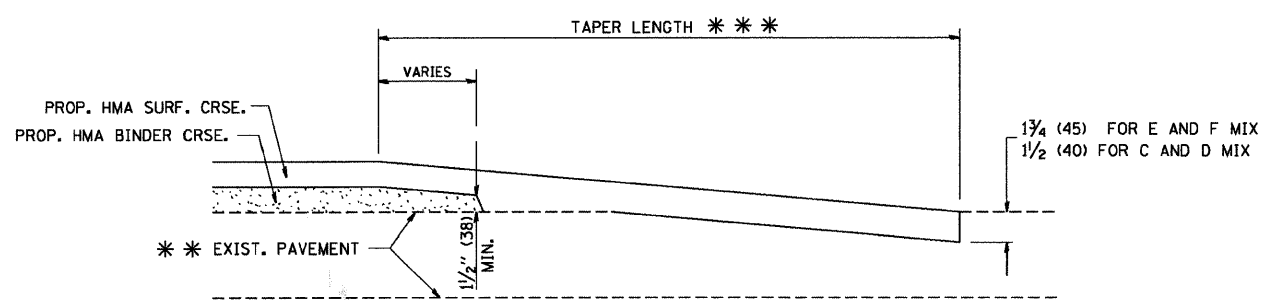


**OPTION 2**

**TYPICAL TEMPORARY RAMP**



**BUTT JOINT DETAIL**



**HMA TAPER DETAIL**

**TYPICAL BUTT JOINT AND HMA TAPER FOR RESURFACING ONLY**

\*\*\* PC CONCRETE, HMA OR HMA RESURFACED PAVEMENT.

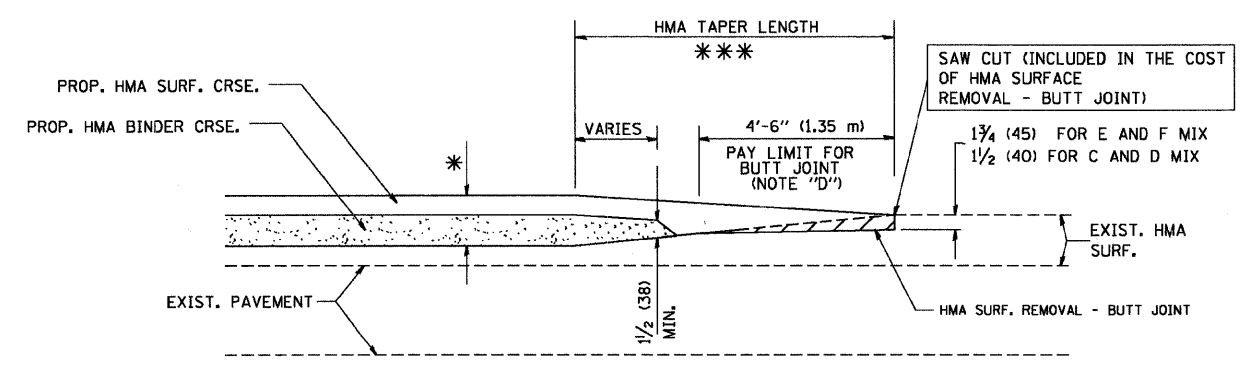
**NOTES**

- A: MAINLINE ROADWAYS AND MAJOR SIDE ROADS.
  - B: MINOR SIDE ROADS.
  - C: THE TEMP. RAMP SHALL BE CONSTRUCTED IMMEDIATELY UPON REMOVAL OF THE EXISTING HMA SURFACE.
  - D: THE BUTT JOINT SHALL BE CONSTRUCTED IMMEDIATELY PRIOR TO PLACING THE PROPOSED HMA COURSES.
  - E: TAPER THE TEMP. RAMP AT A RATE OF 3'-0" (900 mm) PER 1 INCH (25 mm) OF MILLING THICKNESS.
  - F: INSTALLATION AND REMOVAL OF THE 4'-6" (1.35 m) TEMP. RAMP IS INCLUDED IN COST OF HMA SURFACE REMOVAL - BUTT JOINT
  - G: SEE ARTICLE 406.08 AND 406.14 OF THE STANDARD SPECIFICATIONS FOR "HMA AND/OR PCC SURFACE REMOVAL, BUTT JOINT".
- \* SEE TYPICAL SECTIONS FOR MILLING THICKNESS.
- \*\*\* 20'-0" (6.1 m) PER 1 (25) RESURFACING (NOTE "A")  
 10'-0" (3.0 m) PER 1 (25) RESURFACING (NOTE "B")

**BASIS OF PAYMENT:**

THE BUTT JOINT WILL BE PAID FOR AT THE CONTRACT UNIT PRICE PER SQUARE YARD (SQUARE METER) FOR "HOT-MIX ASPHALT SURFACE REMOVAL - BUTT JOINT" OR FOR "PORTLAND CEMENT CONCRETE SURFACE REMOVAL - BUTT JOINT".

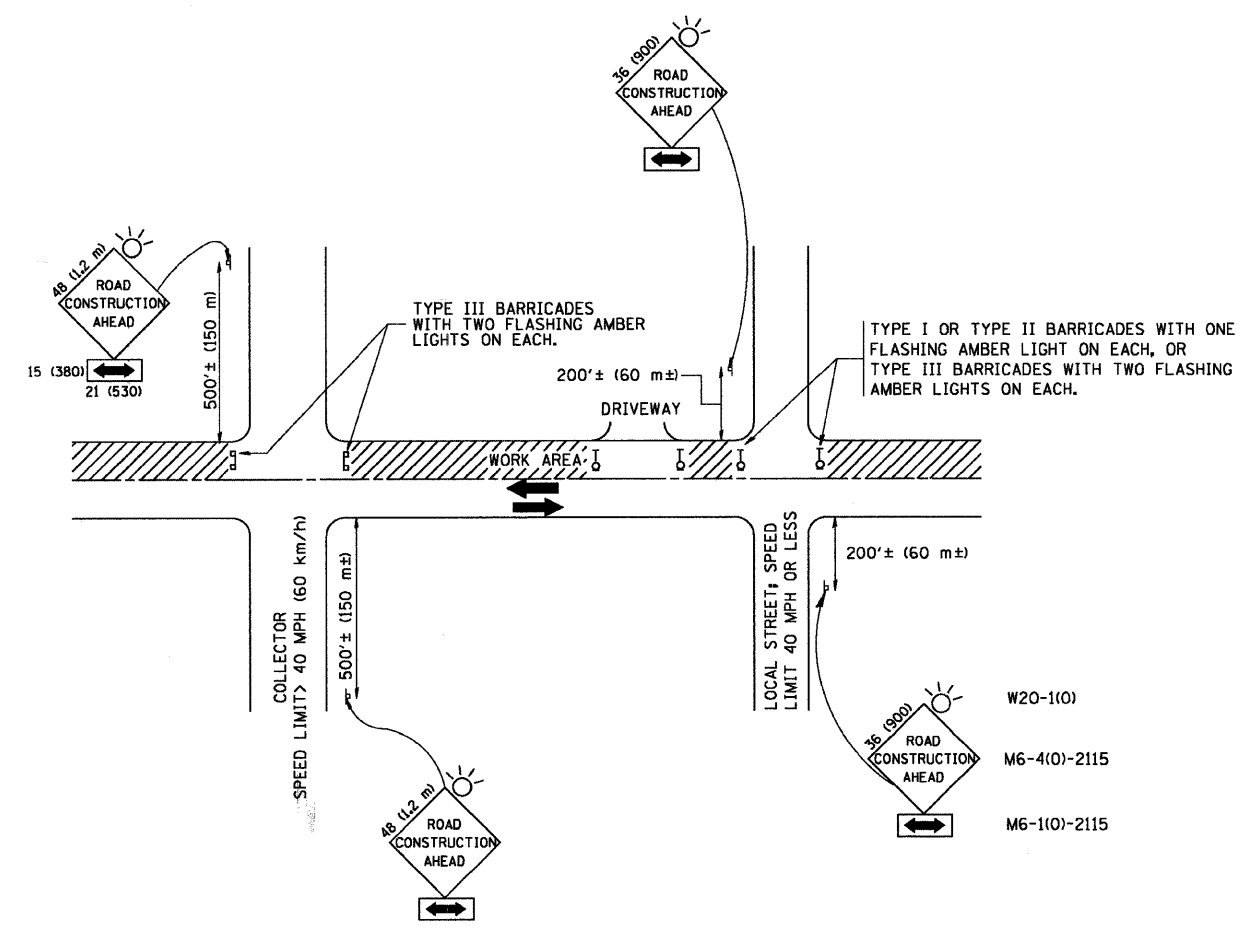
\*F.A.U. 0012 WEST WEGNER ROAD/SOUTH DRIVE  
 ALL DIMENSIONS ARE IN INCHES (MILLIMETERS) UNLESS OTHERWISE SHOWN.



**BUTT JOINT AND HMA TAPER**

**TYPICAL BUTT JOINT AND HMA TAPER FOR MILLING AND RESURFACING**

FILE NAME = W:\d\state\22x34\bd32.dgn	USER NAME = geglianobt	DESIGNED - M. DE YONG	REVISED - R. SHAH 10-25-94	<b>STATE OF ILLINOIS DEPARTMENT OF TRANSPORTATION</b>	<b>BUTT JOINT AND HMA TAPER DETAILS</b>		F.A. -	SECTION	COUNTY	TOTAL SHEETS	SHEET NO.
	PLOT SCALE = 58.0000' / IN.	DRAWN -	REVISED - A. ABBAS 03-21-97				•	08-00008-00-RS	MCHENRY	15	11
PLOT DATE = 1/4/2008	CHECKED -	DATE - 06-13-90	REVISED - M. GOMEZ 04-06-01	SCALE: NONE	SHEET NO. 1 OF 1 SHEETS	STA.	TO STA.	CONTRACT NO. 63165			
								FED. ROAD DIST. NO. 1 [ILLINOIS] FED. AID PROJECT			



TRAFFIC CONTROL AND PROTECTION FOR SIDE ROADS, INTERSECTIONS, AND DRIVEWAYS

NOTES:

- A. FOR NO LANE RESTRICTION ON THE SIDE ROAD OR DRIVEWAYS
- SIDE ROAD WITH A SPEED LIMIT OF 40 MPH (60 km/h) OR LESS AS SHOWN ON THE DRAWING AND AS DIRECTED BY THE ENGINEER:
    - ONE **ROAD CONSTRUCTION AHEAD** SIGN 36 x 36 (900x900) WITH A FLASHER AND FLAG MOUNTED ON IT APPROXIMATELY 200' (60 m) IN ADVANCE OF THE MAIN ROUTE.
    - THE CLOSED PORTION OF THE MAIN ROUTE SHALL BE PROTECTED BY BLOCKING WITH TYPE I, TYPE II OR TYPE III BARRICADES, 1/3 OF THE CROSS SECTION OF THE CLOSED PORTION.
  - SIDE ROAD WITH A SPEED LIMIT GREATER THAN 40 MPH (60 km/h) AS SHOWN ON THE DRAWING AND AS DIRECTED BY THE ENGINEER:
    - ONE **ROAD CONSTRUCTION AHEAD** SIGN 48 x 48 (1.2 m x 1.2 m) WITH A FLASHER MOUNTED ON IT APPROXIMATELY 500' (150 m) IN ADVANCE OF THE MAIN ROUTE.
    - THE CLOSED PORTION OF THE MAIN ROUTE SHALL BE PROTECTED BY BLOCKING WITH TYPE III BARRICADES, 1/2 OF THE CROSS SECTION OF THE CLOSED PORTION.
  - WHEN THE SIDE ROAD LIES BETWEEN THE BEGINNING OF THE MAINLINE SIGNING AND THE WORK ZONE, A SINGLE HEADED ARROW (M6-1) SHALL BE USED IN LIEU OF THE DOUBLE HEADED ARROW (M6-4).
- B. FOR A LANE CLOSURE ON A SIDE ROAD OR DRIVEWAY:
- USE APPLICABLE PORTIONS OF THE TYPICAL APPLICATION OF TRAFFIC CONTROL DEVICES (STD. 701501, STD. 701606 OR THE APPROPRIATE STANDARD). THE SPACING OF SIGNS AND BARRICADES SHALL BE ADJUSTED FOR FIELD CONDITIONS AS DIRECTED BY THE ENGINEER. THE DIRECTIONAL ARROW SHALL BE COVERED OR REMOVED WHEN NO LONGER CONSISTENT WITH THE SIDE ROAD LANE CLOSURE.
- C. ADVANCE WARNING SIGNS ARE TO BE OMITTED ON DRIVEWAY UNLESS OTHERWISE NOTED.
- D. THE TRAFFIC CONTROL AND PROTECTION FOR SIDE ROADS, INTERSECTIONS, AND DRIVEWAYS SHALL BE INCIDENTAL TO THE COST OF SPECIFIED TRAFFIC CONTROL STANDARDS OR ITEMS.

\*F.A.U. 0012 WEST WEGNER ROAD/SOUTH DRIVE  
All dimensions are in millimeters (inches) unless otherwise shown.

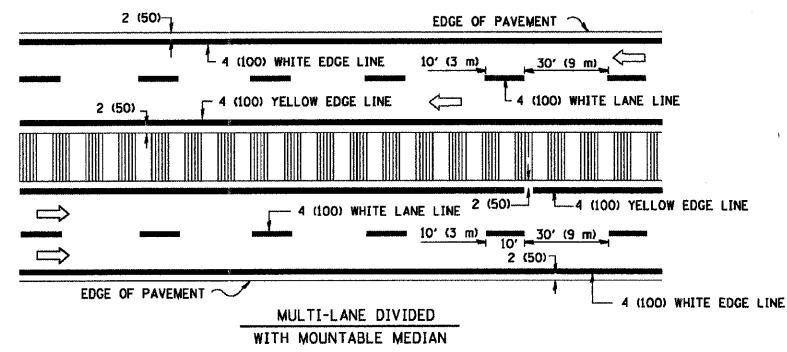
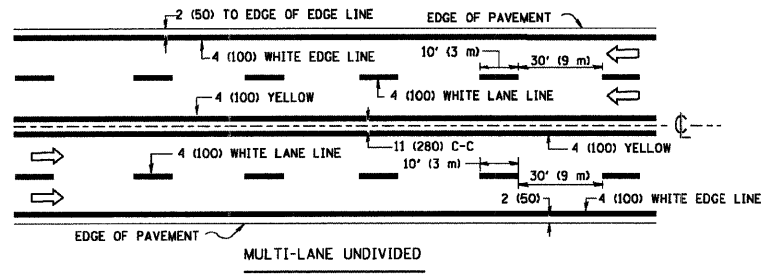
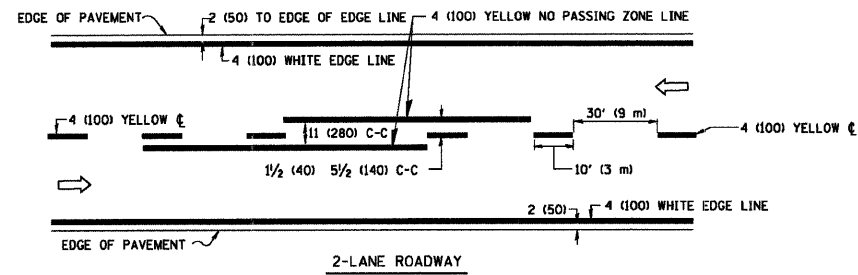
FILE NAME = W:\data\22x34\col8.dgn	USER NAME = geglienobt	DESIGNED - LHA	REVISED - J. OBERLE 10-18-95
		DRAWN -	REVISED - A. HOUSEH 03-06-96
	PLOT SCALE = 58.000' / IN.	CHECKED -	REVISED - A. HOUSEH 10-15-96
	PLOT DATE = 1/4/2000	DATE - 06-89	REVISED - T. RAMMACHER 01-06-00

STATE OF ILLINOIS  
DEPARTMENT OF TRANSPORTATION

TRAFFIC CONTROL AND PROTECTION FOR  
SIDE ROADS, INTERSECTIONS, AND DRIVEWAYS

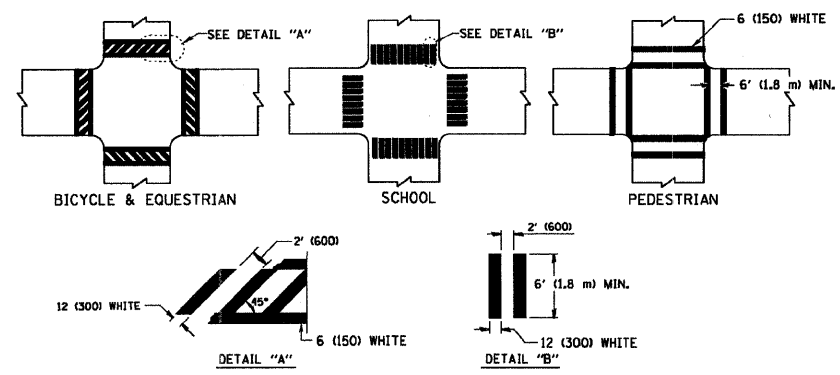
SCALE: NONE SHEET NO. 1 OF 1 SHEETS STA. TO STA.

F.A.U. RTE.	SECTION	COUNTY	TOTAL SHEETS	SHEET NO.
*	08-00008-00-RS	MCHENRY	15	12
TC-10			CONTRACT NO. 63165	
FED. ROAD DIST. NO. 1 ILLINOIS FED. AID PROJECT				

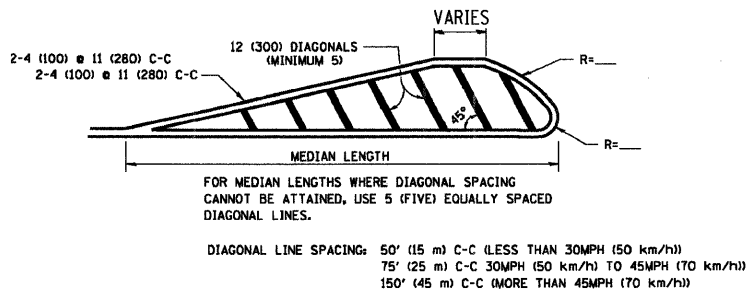
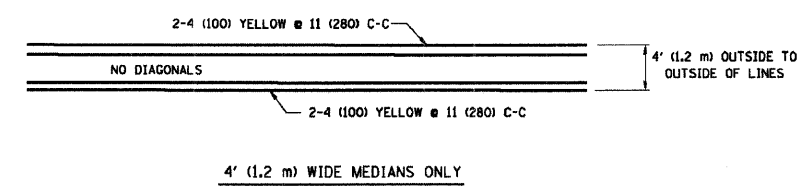


NOTE: MEDIANS WITH BARRIER CURB DO NOT REQUIRE AN EDGE LINE

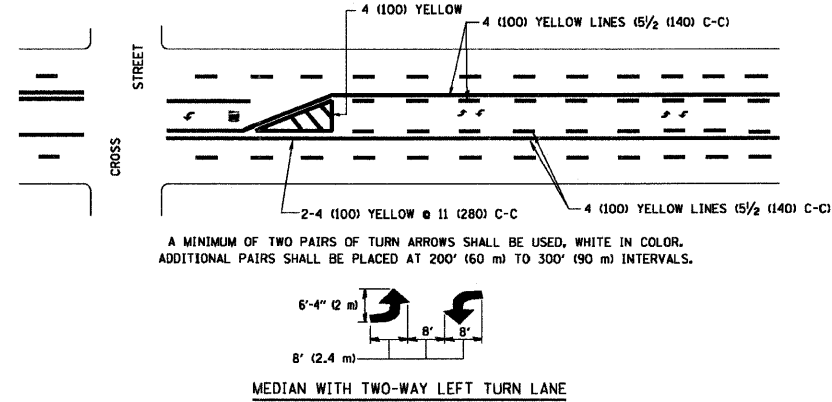
**TYPICAL LANE AND EDGE LINE MARKING**



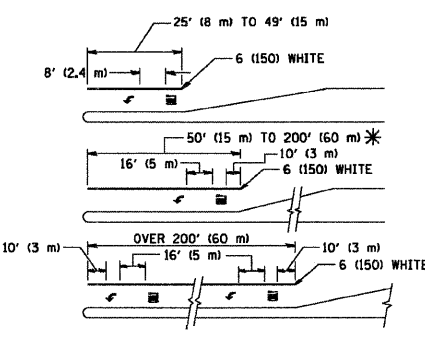
**TYPICAL CROSSWALK MARKING**



**MEDIANS OVER 4' (1.2 m) WIDE**



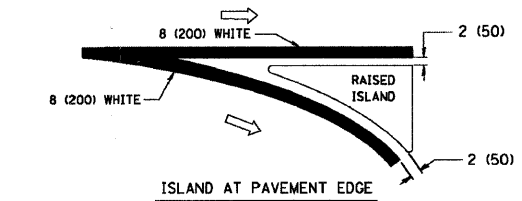
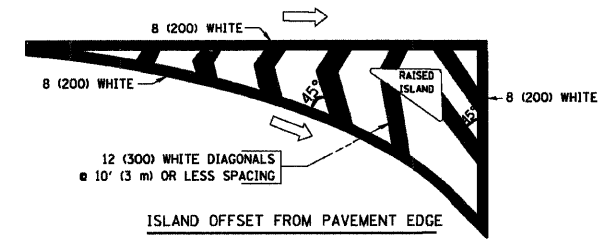
**TYPICAL PAINTED MEDIAN MARKING**



**TYPICAL LEFT (OR RIGHT) TURN LANE**

FULL SIZE LETTERS 8' (2.4 m) AND ARROWS SHALL BE USED.  
 \* TURN LANES IN EXCESS OF 400' (120 m) IN LENGTH MAY HAVE AN ADDITIONAL SET OF ARROW - "ONLY" INSTALLED MIDWAY BETWEEN THE OTHER TWO SETS OF ARROW - "ONLY".

**TYPICAL TURN LANE MARKING**



**TYPICAL ISLAND MARKING**

TYPE OF MARKING	WIDTH OF LINE	PATTERN	COLOR	SPACING / REMARKS
CENTERLINE ON 2 LANE PAVEMENT	4 (100)	SKIP-DASH	YELLOW	10' (3 m) LINE WITH 30' (9 m) SPACE
CENTERLINE ON MULTI-LANE UNDIVIDED PAVEMENT	2 @ 4 (100)	SOLID	YELLOW	11 (280) C-C
NO PASSING ZONE LINES FOR ONE DIRECTION FOR BOTH DIRECTIONS	4 (100) 2 @ 4 (100)	SOLID SOLID	YELLOW YELLOW	5 1/2 (140) C-C FROM SKIP-DASH CENTERLINE 11 (280) C-C OMIT SKIP-DASH CENTERLINE BETWEEN
LANE LINES	4 (100) 5 (125) ON FREEWAYS	SKIP-DASH SKIP-DASH	WHITE WHITE	10' (3 m) LINE WITH 30' (9 m) SPACE
DOTTED LINES (EXTENSIONS OF CENTER, LANE OR TURN LANE MARKINGS)	SAME AS LINE BEING EXTENDED	SKIP-DASH	SAME AS LINE BEING EXTENDED	2' (600) LINE WITH 6' (1.8 m) SPACE
EDGE LINES	4 (100)	SOLID	YELLOW-LEFT WHITE-RIGHT	OUTLINE MOUNTABLE MEDIANS IN YELLOW, EDGE LINES ARE NOT USED NEXT TO BARRIER CURB
TURN LANE MARKINGS	6 (150) LINE; FULL SIZE LETTERS & SYMBOLS (8' (2.4m))	SOLID	WHITE	SEE TYPICAL TURN LANE MARKING DETAIL
TWO WAY LEFT TURN MARKING	2 @ 4 (100) EACH DIRECTION 8' (2.4m) LEFT ARROW	SKIP-DASH AND SOLID IN PAIRS	YELLOW WHITE	10' (3 m) LINE WITH 30' (9 m) SPACE FOR SKIP-DASH; 5 1/2 (140) C-C BETWEEN SOLID LINE AND SKIP-DASH LINE SEE TYPICAL TWO-WAY LEFT TURN MARKING DETAIL
CROSSWALK LINES (PEDESTRIAN) A. DIAGONALS (BIKE & EQUESTRIAN) B. LONGITUDINAL BARS (SCHOOL)	2 @ 6 (150) 12 (300) @ 45° 12 (300) @ 90°	SOLID SOLID SOLID	WHITE WHITE WHITE	NOT LESS THAN 6' (1.8 m) APART 2' (600) APART 2' (600) APART SEE TYPICAL CROSSWALK MARKING DETAILS.
STOP LINES	24 (600)	SOLID	WHITE	PLACE 4' (1.2 m) IN ADVANCE OF AND PARALLEL TO CROSSWALK, IF PRESENT. OTHERWISE, PLACE AT DESIRED STOPPING POINT. PARALLEL TO CROSSROAD CENTERLINE, WHERE POSSIBLE
PAINTED MEDIANS	2 @ 4 (100) WITH 12 (300) DIAGONALS @ 45° NO DIAGONALS USED FOR 4' (1.2 m) WIDE MEDIANS	SOLID	YELLOW; TWO WAY TRAFFIC WHITE; ONE WAY TRAFFIC	11 (280) C-C FOR THE DOUBLE LINE SEE TYPICAL PAINTED MEDIAN MARKING.
GORE MARKING AND CHANNELIZING LINES	8 (200) WITH 12 (300) DIAGONALS @ 45°	SOLID	WHITE	DIAGONALS; 15' (4.5 m) C-C (LESS THAN 30MPH (50 km/h)) 20' (6 m) C-C 30MPH (50 km/h) TO 45MPH (70 km/h) 30' (9 m) C-C (OVER 45MPH (70 km/h))
RAILROAD CROSSING	24 (600) TRANSVERSE LINES; "RR" IS 6' (1.8 m) LETTERS; 16 (400) LINE FOR "X"	SOLID	WHITE	SEE STATE STANDARD 780001 AREA OF: "R"=3.6 SQ. FT. (0.33 m <sup>2</sup> ) EACH "X"=54.0 SQ. FT. (5.0 m <sup>2</sup> )
SHOULDER DIAGONALS	12 (300) @ 45°	SOLID	WHITE - RIGHT YELLOW - LEFT	50' (15 m) C-C (LESS THAN 30MPH (50 km/h)) 75' (25 m) C-C (30 MPH (50 km/h) TO 45MPH (70 km/h)) 150' (45 m) C-C (OVER 45MPH (70 km/h))

FOR FURTHER DETAILS ON PAVEMENT MARKING REFER TO STANDARD SPECIFICATIONS FOR ROAD AND BRIDGE CONSTRUCTION AND STATE STANDARD 780001.

All dimensions are in inches (millimeters) unless otherwise shown.

\*F.A.U. 0012 WEST WEGNER ROAD/SOUTH DRIVE

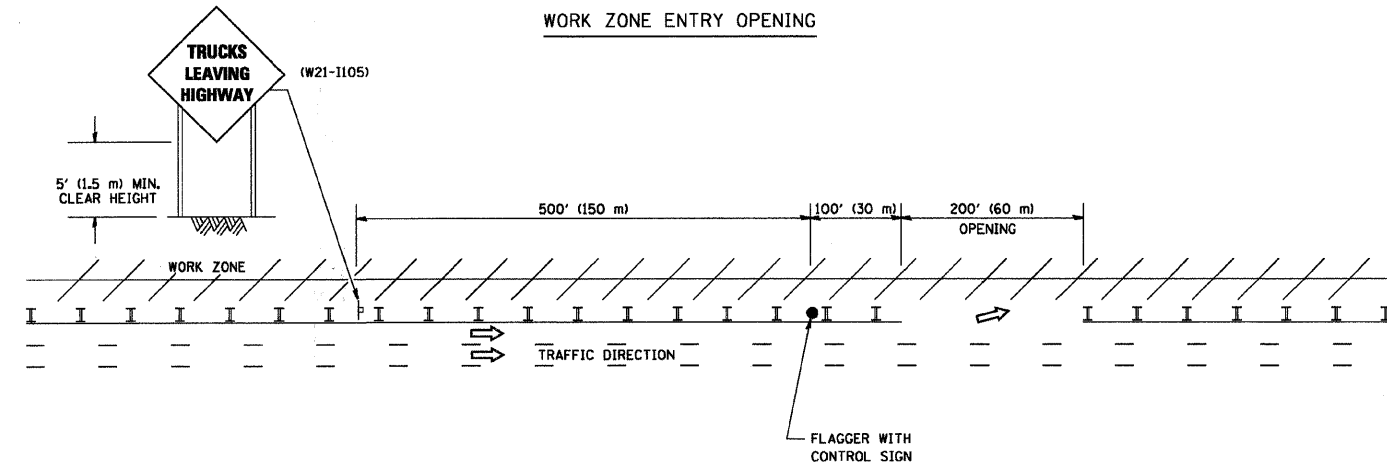
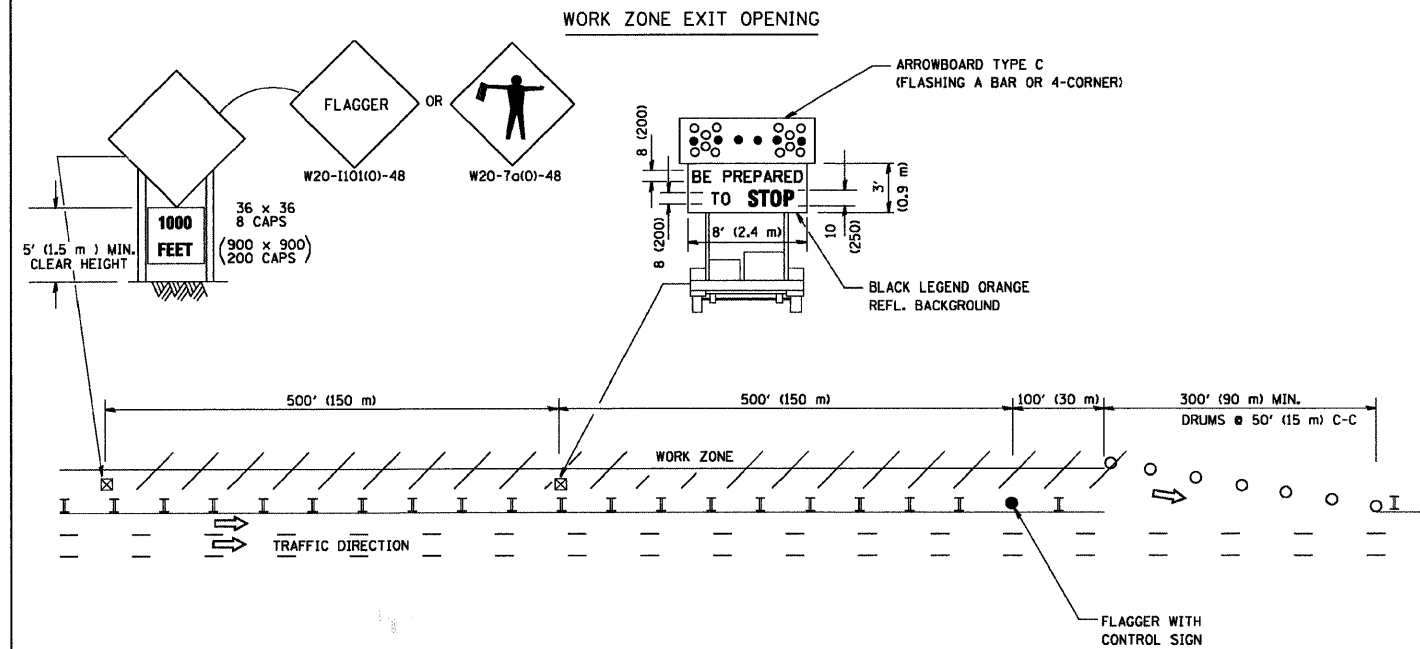
FILE NAME = W:\dist\td\22x34\vc13.dgn	USER NAME = goglianobt	DESIGNED - EVERS	REVISED - T. RAMMACHER 10-27-94
		DRAWN -	REVISED - A. HOUSEH 10-09-96
	PLOT SCALE = 50.000 / IN.	CHECKED -	REVISED - A. HOUSEH 10-17-96
	PLOT DATE = 1/4/2008	DATE - 03-19-90	REVISED - T. RAMMACHER 01-06-00

**STATE OF ILLINOIS  
DEPARTMENT OF TRANSPORTATION**

DISTRICT ONE			
TYPICAL PAVEMENT MARKINGS			
SCALE: NONE	SHEET NO. 1 OF 1 SHEETS	STA.	TO STA.

F.A. RTE.	SECTION	COUNTY	TOTAL SHEETS	SHEET NO.
08-0008-00-RS	TC-13	MCHENRY	15	13
FED. ROAD DIST. NO. 1 ILLINOIS FED. AID PROJECT			CONTRACT NO. 63165	

SIGNING FOR FLAGGING OPERATIONS AT WORK ZONE OPENINGS

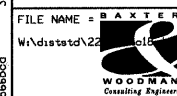


NOTES:

1. The Arrowboard, the Flagger Ahead trailer mounted sign, and the Trucks Leaving Highway sign shall be removed or turned away from traffic and the exit and entry openings shall be closed when the flagging operation ceases.
2. Work Zone Exit Openings should be a minimum of one half mile apart.
3. Exiting the work zone at any place other than at a Work Zone Exit Opening will be prohibited.
4. All vehicles shall enter the work zone at entry openings, using their turn signals to warn motorists

\*F.A.U. 0012 WEST WEGNER ROAD/SOUTH DRIVE  
ALL DIMENSIONS ARE IN INCHES (MILLIMETERS)  
UNLESS OTHERWISE SHOWN

COPYRIGHT © 2008 BY BAXTER & WOODMAN, INC.  
 STATE OF ILLINOIS - PROFESSIONAL DESIGN FIRM  
 5850 S. WILSON AVENUE, SUITE 100  
 CHICAGO, ILLINOIS 60638  
 TEL: 773.291.1000 FAX: 773.291.1001  
 WWW.BAXTERANDWOODMAN.COM



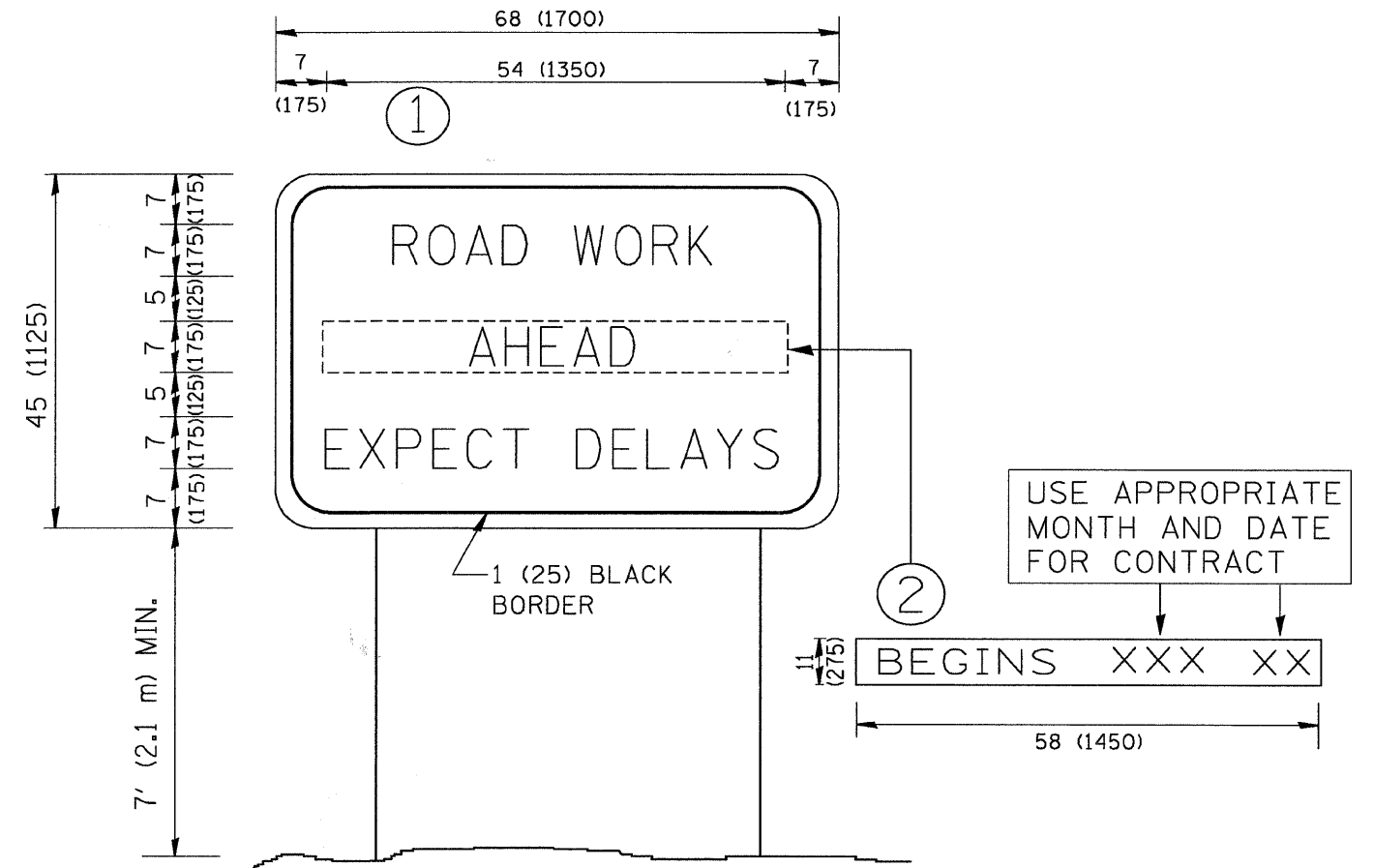
FILE NAME = BAXTER	USER NAME = gaglianobt	DESIGNED -	REVISED - D.W.S. 08-98
W:\dsistat\22		DRAWN -	REVISED - J.A.F. 04-03
		CHECKED -	REVISED - J.A.F. 02-06
		DATE -	REVISED - S.P.B. 01-07

STATE OF ILLINOIS  
DEPARTMENT OF TRANSPORTATION

SIGNING FOR FLAGGING OPERATIONS  
AT WORK ZONE OPENINGS

SCALE: NONE SHEET NO. 1 OF 1 SHEETS STA. TO STA.

F.A.U. RTE.	SECTION	COUNTY	TOTAL SHEETS	SHEET NO.
	08-0008-00-RS	MCHENRY	15	14
	TC-18	CONTRACT NO.	63165	
FED. ROAD DIST. NO. 1 ILLINOIS FED. AID PROJECT				



**NOTES:**

1. USE BLACK LETTERING ON ORANGE BACKGROUND.
2. ERECT SIGNS IN ADVANCE OF THE LOCATION FOR THE "ROAD CONSTRUCTION AHEAD" SIGN AT LOCATIONS AS DIRECTED BY THE ENGINEER.
3. ERECT SIGN ① WITH INSTALLED PANEL ② ONE WEEK PRIOR TO THE START OF CONSTRUCTION.
4. REMOVE PANEL ② SOON AFTER THE START OF CONSTRUCTION.
5. SEE SPECIAL PROVISION FOR "TEMPORARY INFORMATION SIGNING" FOR ADDITIONAL INFORMATION.
6. ONE SIGN ASSEMBLY EQUALS 25.70 SQ. FT. (2.3 SQ. M.)
7. SHALL BE PAID FOR AS TEMPORARY INFORMATION SIGNING.

ALL DIMENSIONS ARE IN INCHES (MILLIMETERS) UNLESS OTHERWISE SHOWN.

\*F.A.U. 0012 WEST WEGNER ROAD/SOUTH DRIVE

FILE NAME = W:\distatd\22x34\to22.dgn	USER NAME = gaglianobt	DESIGNED - -	REVISED - R. MIRS 09-15-97
		DRAWN - -	REVISED - R. MIRS 12-11-97
	PLOT SCALE = 50,000 / IN.	CHECKED - -	REVISED - T. RAMMACHER 02-02-99
	PLOT DATE = 1/4/2008	DATE - -	REVISED - C. JUCIUS 01-31-07

**STATE OF ILLINOIS  
DEPARTMENT OF TRANSPORTATION**

**ARTERIAL ROAD  
INFORMATION SIGN**

SCALE: NONE SHEET NO. 1 OF 1 SHEETS STA. TO STA.

F.A. RTE.	SECTION	COUNTY	TOTAL SHEETS	SHEET NO.
•	08-00008-00-RS	MCHENRY	15	15
TC-22			CONTRACT NO. 63165	
FED. ROAD DIST. NO. 1 ILLINOIS FED. AID PROJECT				