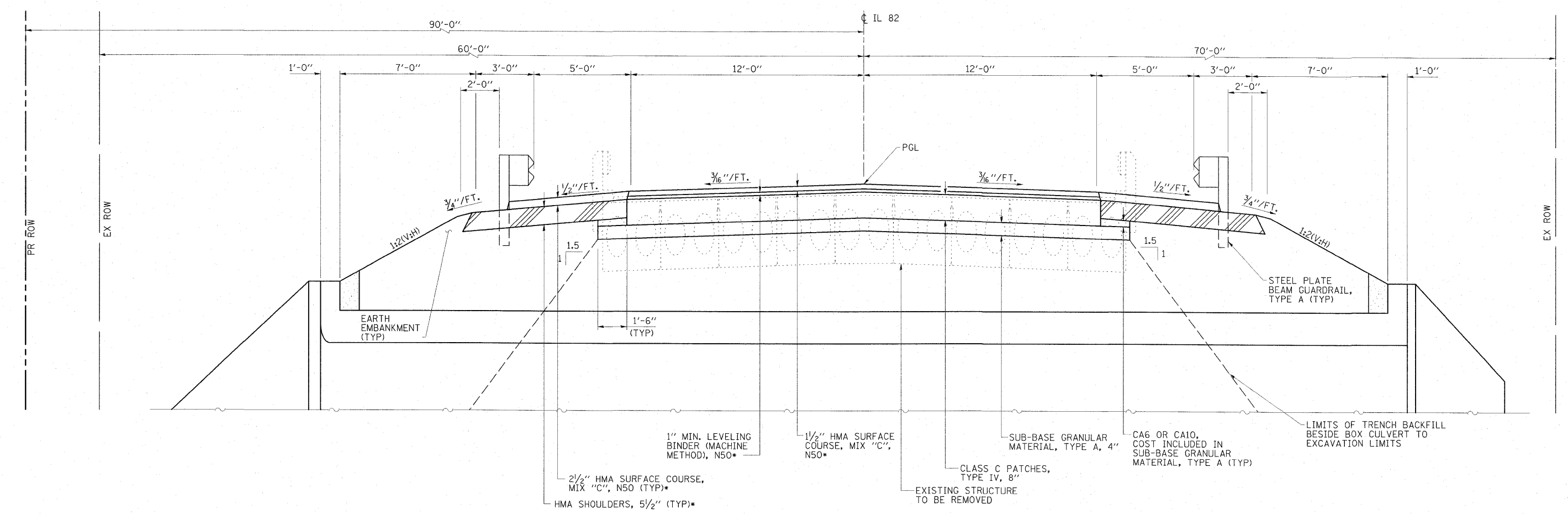


**PROPOSED TYPICAL ROADWAY SECTION**  
STATION 634+50 TO STATION 638+75  
(LOOKING NORTH)



**PROPOSED SECTION THRU BOX CULVERT**  
(LOOKING NORTH)

\*RATE= 112 LB/SQ YD/IN

FILE NAME = D264428-sh1-typical184.dgn	USER NAME = HAS	DESIGNED - JMS	REVISED -	<b>STATE OF ILLINOIS DEPARTMENT OF TRANSPORTATION</b>	<b>TYPICAL SECTIONS</b>		F.A.P. RTE. 638	SECTION 137-1BR	COUNTY HENRY	TOTAL SHEETS 67	SHEET NO. 5
PLOT SCALE = 0.0839 1/16 IN.	CHECKED - ELH	DATE - 3/13/09	REVISED -		SCALE: 3/8"=1'-0"	SHEET NO. 2 OF 2 SHEETS	STA.	TO STA.	CONTRACT NO. 64428		
PLOT DATE = 3/23/2009 9:39:22 AM							FED. ROAD DIST. NO.		ILLINOIS FED. AID PROJECT		