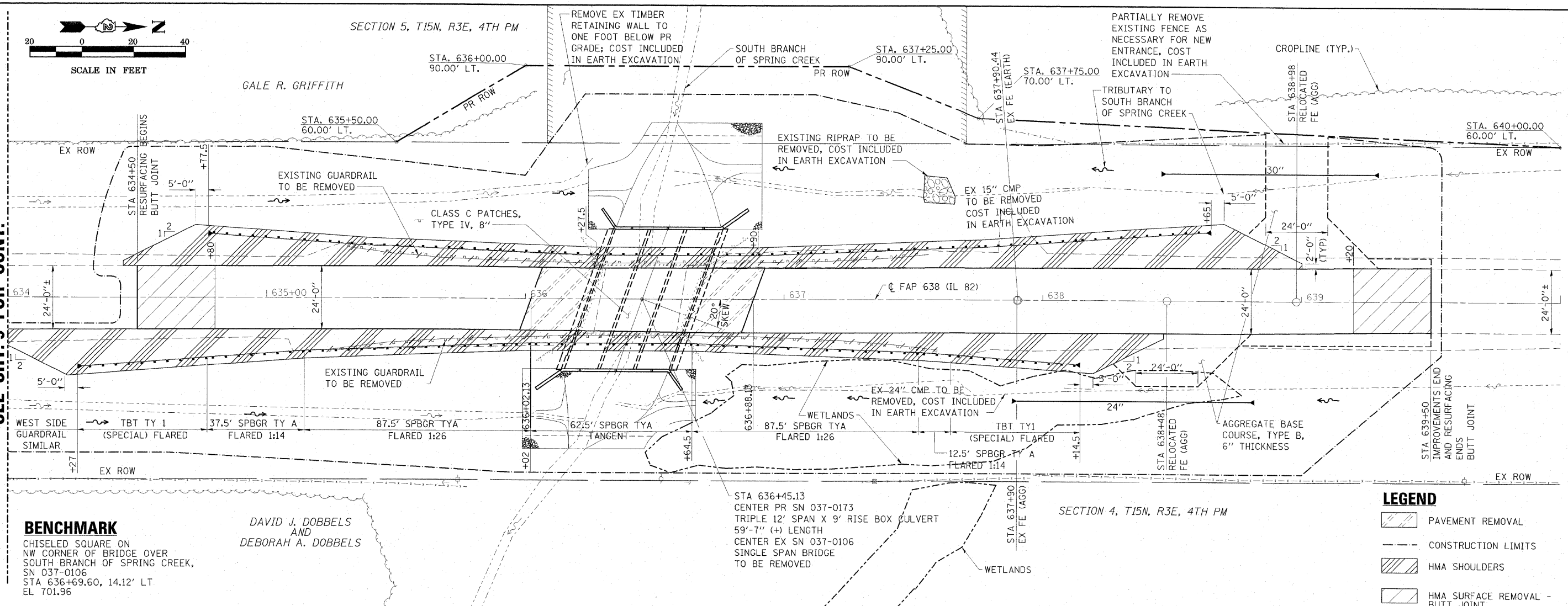


SECTION 5, T15N, R3E, 4TH PM

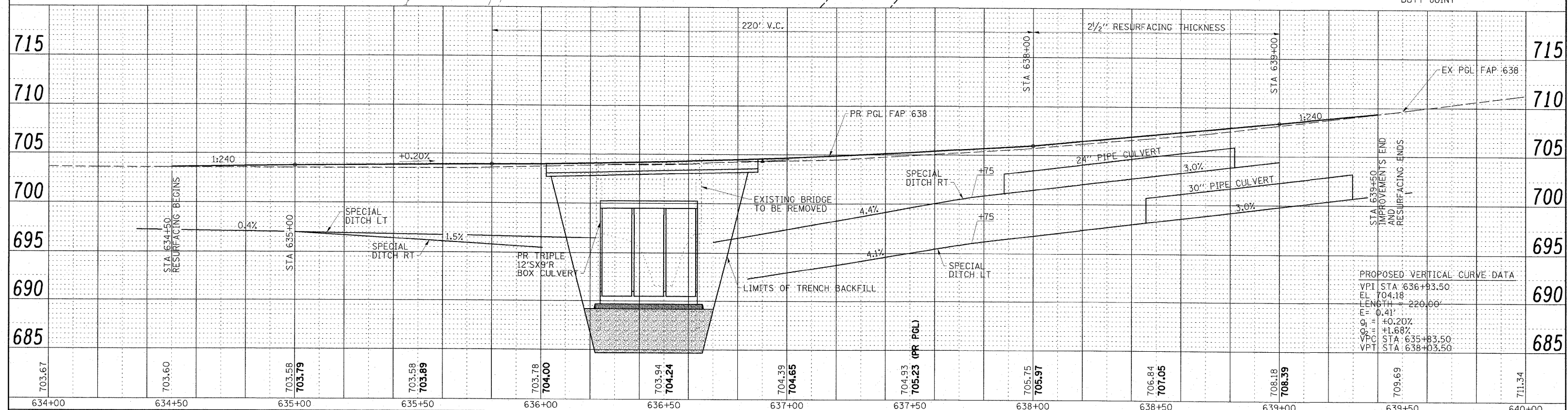
GALE R. GRIFFITH

MATCH LINE STA. 634+00
SEE SHT. 9 FOR CONT.



LEGEND

- PAVEMENT REMOVAL
- CONSTRUCTION LIMITS
- HMA SHOULDERS
- HMA SURFACE REMOVAL - BUTT JOINT



FILE NAME - D264428-sht-plnprf02.dgn	USER NAME - HAS	DESIGNED - JMS	REVISED -	STATE OF ILLINOIS DEPARTMENT OF TRANSPORTATION	FAP 638 (IL 82) PLAN AND PROFILE STA 634+00 TO STA 640+00	F.A.P. RTE. 638	SECTION 137-1BR	COUNTY HENRY	TOTAL SHEETS 67	SHEET NO. 10	
SCALES: (HORIZ) 1"=20'-0" (VERT) 1"=5'	PLOT SCALE = 28.1485' / IN.	DRAWN - JPC	REVISED -			SCALE: 1"=20'-0"	SHEET NO. 2 OF 2 SHEETS	STA. 634+00 TO STA. 640+00	FED. ROAD DIST. NO. ILLINOIS	FED. AID PROJECT	CONTRACT NO. 64428
	PLOT DATE = 3/23/2009 2:07:23 PM	CHECKED - ELH	REVISED -								
	DATE - 03/13/09		REVISED -								