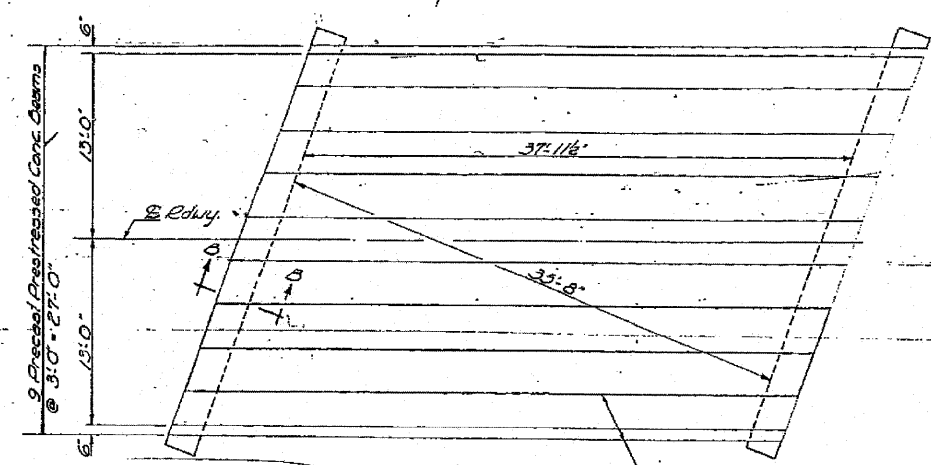


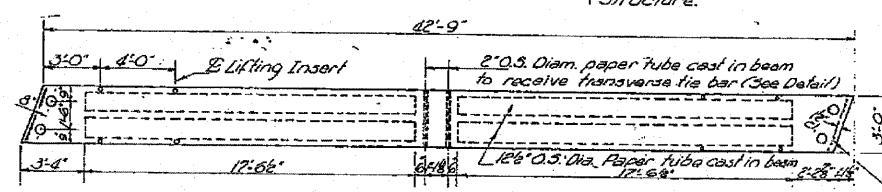
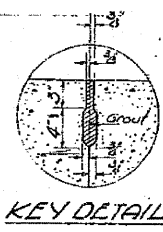
PROJECT NO.	SECTION	COUNTY	TOTAL SHEETS	SHEET NO.
137-1B	Henry	54	20	3

SHEET NO. 3 SHEETS

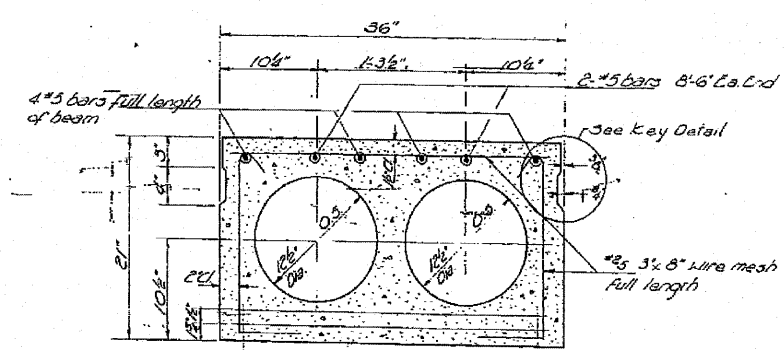


Note: Remove existing West Beam with curb & handrail & re-use as outside beam.

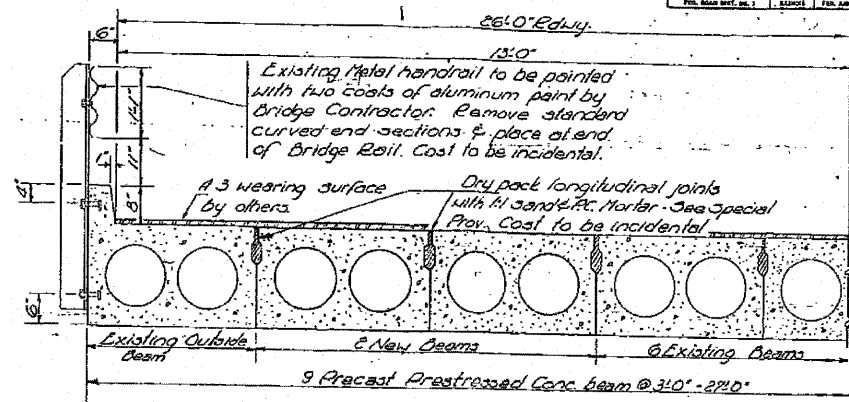
New position of exist. west curb beam. Cost of moving & resetting shall be included in unit price bid for raising existing superstructure.



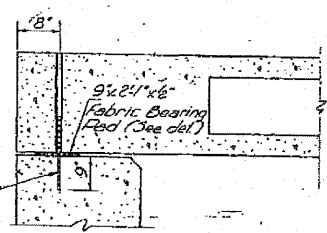
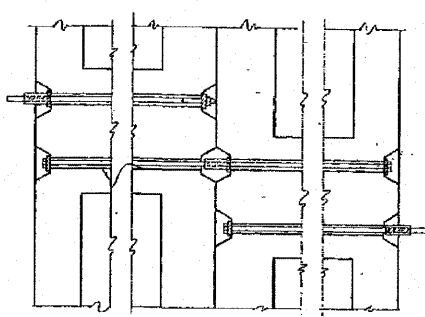
*2# 3"x8" wire mesh full depth of beam each end. *2 wires to be vertical



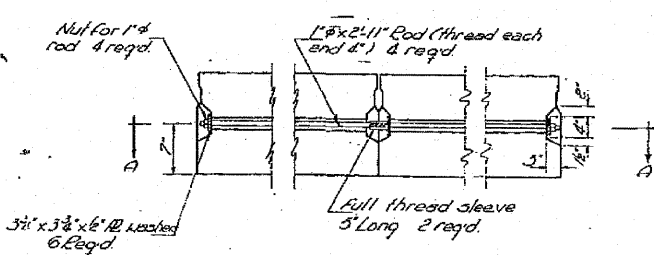
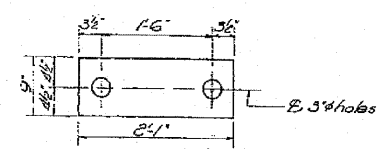
Note: Place strand symmetrically about E Beam



Symm about E Edwy.



4" # x 1-6" dowel bars after beams are in place the contractor shall drill holes into bridge seat & grout dowels into beam & cap. Cost to be incidental



The cost of furnishing & assembling transverse ties to be included in the unit price bid for Precast Prestressed Conc. Bridge Deck

BILL OF MATERIAL

ITEM	Qu.
Precast Prestressed Conc. Bridge Deck	391 257

DESIGNED: *AP Henderson*
CHECKED: *J. James J.*
DRAWN: *APR A. Baraza*
CHECKED: *J. A. P.*

EXAMINED: *W. B. ...*
PASSED: *...*
APPROVED: *R. K. ...*

SEPT. 9. 1960

SUPERSTRUCTURE
ALT. 381, RTE. 82 - SEC. 137-1B
HENRY COUNTY
STA. 434+88.3