



CHAIN IL82 DESCRIPTION

Chain IL82 contains:
310 CUR 200 210 CUR 220 230 CUR 240 250 CUR 260 CUR 270 280 CUR 290 10

Beginning chain IL82 description

Point 310 N 1,686,670.0404 E 2,296,953.0212 Sta 544+36.8000
Course from 310 to PC 200 0° 11' 52.9395" Dist 3,573.5528

Curve Data

Curve 200
P.I. Station 585+53.9859 N 1,690,787.2018 E 2,296,967.2519
Delta = 0° 21' 44.7179" (LT)
Degree = 0° 02' 00.0002"
Tangent = 543.6332
Length = 1,087.2628
Radius = 171,886.9999
External = 0.8597
Long Chord = 1,087.2609
Mid. Ord. = 0.8597
P.C. Station 580+10.3528 N 1,690,243.5718 E 2,296,965.3729
P.T. Station 590+97.6155 N 1,691,330.8327 E 2,296,965.6922
C.C. N 1,690,837.6858 E 2,125,079.3997
Back = 0° 11' 52.9395"
Ahead = 359° 50' 08.2217"
Chord Bear = 0° 01' 00.5806"

Course from PT 200 to 210 359° 50' 08.2217" Dist 2,097.1956

Point 210 N 1,693,428.0197 E 2,296,959.6753 Sta 611+94.8111
Course from 210 to PC 220 359° 43' 49.7963" Dist 4,047.8477

Curve Data

Curve 220
P.I. Station 656+39.6999 N 1,697,872.8594 E 2,296,938.7680
Delta = 0° 37' 51.6843" (RT)
Degree = 0° 04' 46.0796"
Tangent = 397.0411
Length = 794.0743
Radius = 72,100.4990
External = 1.0932
Long Chord = 794.0703
Mid. Ord. = 1.0932
P.C. Station 652+42.6588 N 1,697,475.8226 E 2,296,940.6356
P.T. Station 660+36.7331 N 1,698,269.8926 E 2,296,941.2733
C.C. N 1,697,814.9581 E 2,369,040.3370
Back = 359° 43' 49.7963"
Ahead = 0° 21' 41.4806"
Chord Bear = 0° 02' 45.6385"

Course from PT 220 to 230 0° 21' 41.4806" Dist 4,946.9845

Point 230 N 1,703,216.7786 E 2,296,972.4873 Sta 709+83.7176
Course from 230 to PC 240 0° 29' 46.3397" Dist 5,047.5240

Curve Data

Curve 240
P.I. Station 765+31.2415 N 1,708,764.0946 E 2,297,020.5306
Delta = 0° 17' 37.1732" (LT)
Degree = 0° 01' 45.7175"
Tangent = 500.0000
Length = 999.9978
Radius = 195,109.3373
External = 0.6407
Long Chord = 999.9967
Mid. Ord. = 0.6407
P.C. Station 760+31.2415 N 1,708,264.1133 E 2,297,016.2004
P.T. Station 770+31.2393 N 1,709,264.0914 E 2,297,022.2981
C.C. N 1,709,953.8209 E 2,101,914.1800
Back = 0° 29' 46.3397"
Ahead = 0° 12' 09.1666"
Chord Bear = 0° 20' 57.7531"

Course from PT 240 to 250 0° 12' 09.1666" Dist 9,713.4707

Point 250 N 1,718,977.5015 E 2,297,056.6362 Sta 867+44.7101
Course from 250 to PC 260 0° 20' 15.9982" Dist 5,457.6237

Curve Data

Curve 260
P.I. Station 924+00.3603 N 1,724,633.0535 E 2,297,089.9779
Delta = 11° 59' 46.4759" (RT)
Degree = 3° 02' 24.2203"
Tangent = 198.0266
Length = 394.6053
Radius = 1,884.6917
External = 10.3749
Long Chord = 393.8849
Mid. Ord. = 10.3181
P.C. Station 922+02.3337 N 1,724,435.0303 E 2,297,088.8104
P.T. Station 925+96.9391 N 1,724,826.5094 E 2,297,132.2784
C.C. N 1,724,423.9195 E 2,298,973.4693
Back = 0° 20' 15.9982"
Ahead = 12° 20' 02.4741"
Chord Bear = 6° 20' 09.2362"

Course from PT 260 to PC 270 12° 20' 02.4741" Dist 3,040.8219

HORIZONTAL AND VERTICAL CONTROL

Curve Data

Curve 270
P.I. Station 958+89.5426 N 1,728,043.1161 E 2,297,835.6131
Delta = 0° 37' 37.5029" (LT)
Degree = 0° 07' 28.3102"
Tangent = 251.7816
Length = 503.5582
Radius = 46,009.3944
External = 0.6889
Long Chord = 503.5557
Mid. Ord. = 0.6889
P.C. Station 956+37.7610 N 1,727,797.1459 E 2,297,781.8299
P.T. Station 961+41.3192 N 1,728,289.6602 E 2,297,886.7010
C.C. N 1,737,625.2352 E 2,252,834.3824
Back = 12° 20' 02.4741"
Ahead = 11° 42' 24.9713"
Chord Bear = 12° 01' 13.7227"

Course from PT 270 to 280 11° 42' 24.9713" Dist 1,877.4576

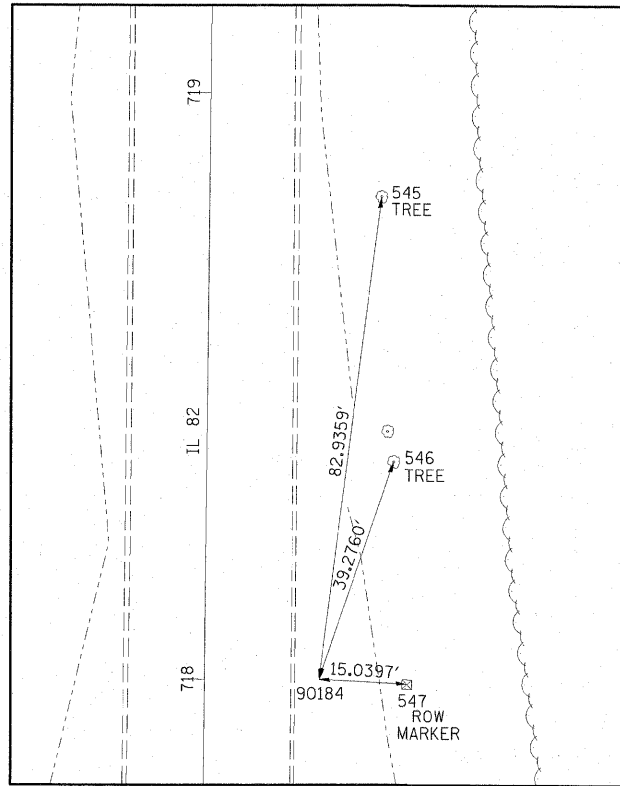
Point 280 N 1,730,128.0634 E 2,298,267.6482 Sta 980+18.7768
Course from 280 to PC 290 11° 44' 24.7293" Dist 3,762.5977

Curve Data

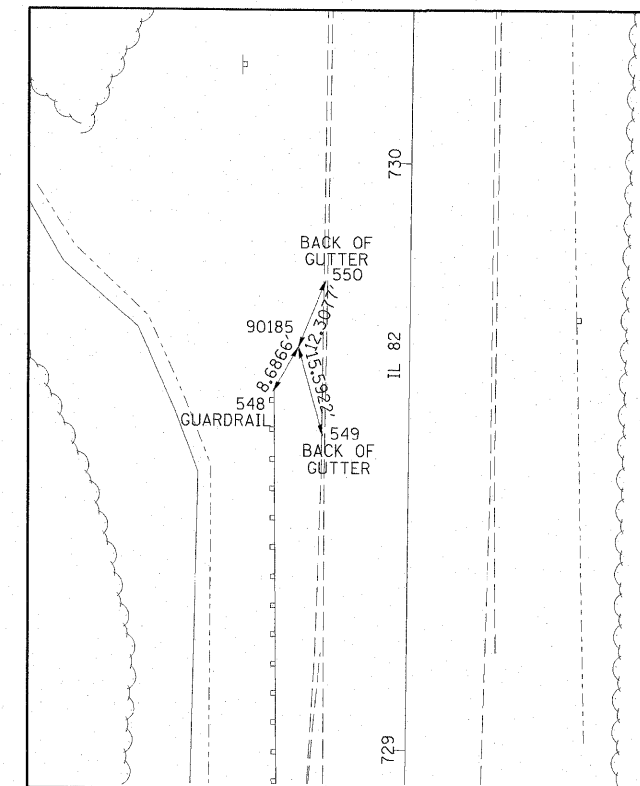
Curve 290
P.I. Station 1020+46.4385 N 1,734,071.4676 E 2,299,087.1740
Delta = 15° 39' 04.6343" (LT)
Degree = 2° 58' 15.0800"
Tangent = 265.0641
Length = 526.8276
Radius = 1,928.5953
External = 18.1299
Long Chord = 525.1911
Mid. Ord. = 17.9610
P.C. Station 1017+81.3744 N 1,733,811.9485 E 2,299,033.2402
P.T. Station 1023+08.2020 N 1,734,335.9144 E 2,299,069.0944
C.C. N 1,734,204.3682 E 2,297,144.9906
Back = 11° 44' 24.7293"
Ahead = 356° 05' 20.0949"
Chord Bear = 3° 54' 52.4121"

Course from PT 290 to 10 356° 05' 20.0949" Dist 1,628.2647

Point 10 N 1,735,960.3870 E 2,298,958.0332 Sta 1039+36.4667
Ending chain IL82 description



HORIZONTAL CONTROL POINT NO. 90184



HORIZONTAL CONTROL POINT NO. 90185

HORIZONTAL CONTROL POINTS							
POINT	NORTH	EAST	ELEVATION	CHAIN	STATION	OFFSET	DESCRIPTION
90184	1704033.0300	2296999.1110	717.2680	IL82	718+00.1689	19.5537 RT	PIN
90185	1705201.6500	2296970.6550	685.7700	IL82	729+68.4986	19.0219 LT	PIN

BENCH MARKS							
POINT	NORTH	EAST	ELEVATION	CHAIN	STATION	OFFSET	DESCRIPTION
484	1704027.1150	2296938.3420	721.5690	IL82	717+93.7278	41.1618 LT	RIGHT OF WAY MARKER
485	1705247.8410	2296958.7030	684.3210	IL82	730+14.5844	31.3734 LT	FENCE POST

REFERENCE TIES				
POINT	CHAIN	STATION	OFFSET	DESCRIPTION
545	IL82	718+82.5239	29.3528	DECIDUOUS TREE
546	IL82	718+37.4542	31.8993	DECIDUOUS TREE
547	IL82	717+99.4200	34.5747	RIGHT OF WAY MARKER
548	IL82	729+60.9029	-23.2362	STEEL PLATE BEAM GUARDRAIL
549	IL82	729+53.5185	-14.6960	BACK OF GUTTER
550	IL82	729+79.9315	-14.4647	BACK OF GUTTER