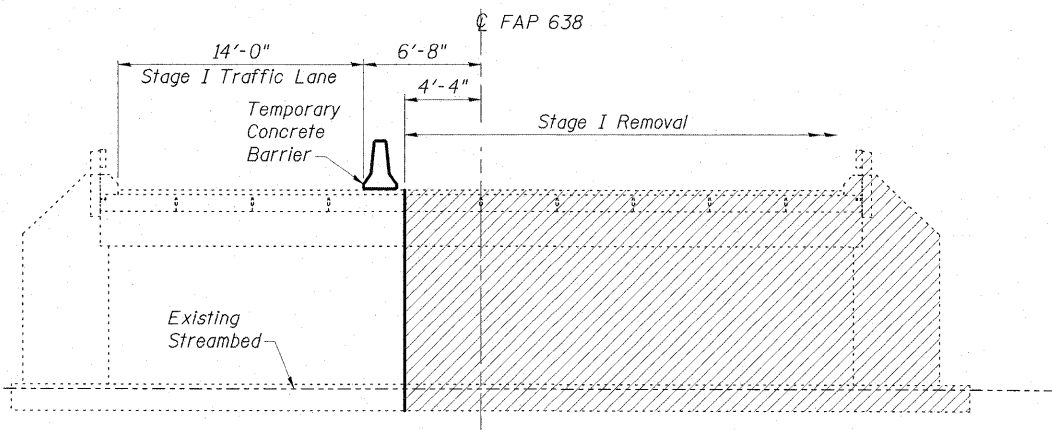
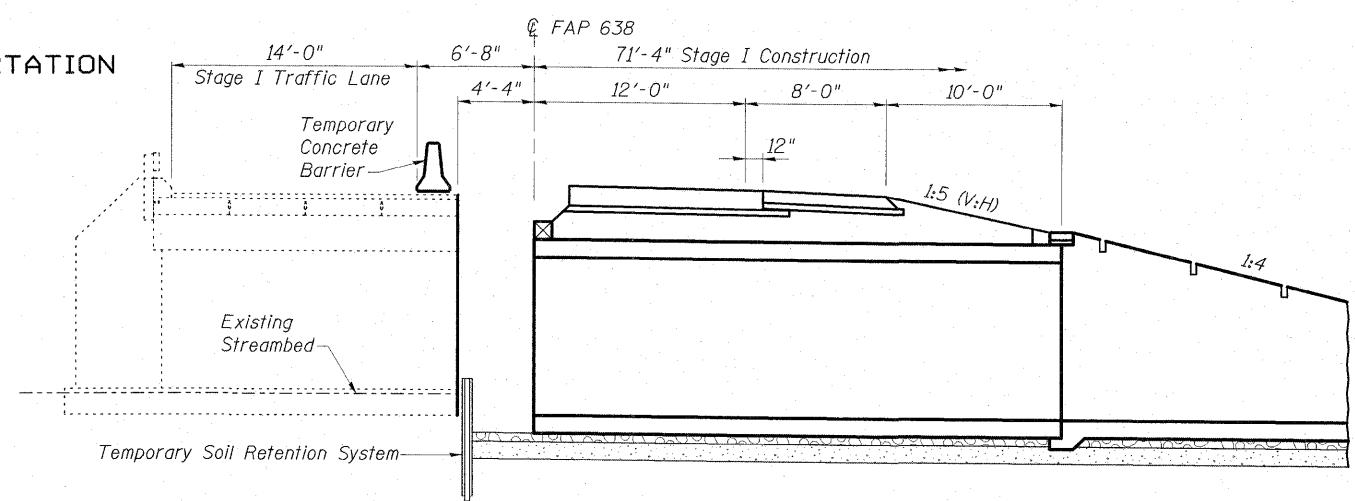


03/07/12 64428-03-5.dwg 3/23/2009 10:55:55 PM HRS

STATE OF ILLINOIS  
DEPARTMENT OF TRANSPORTATION



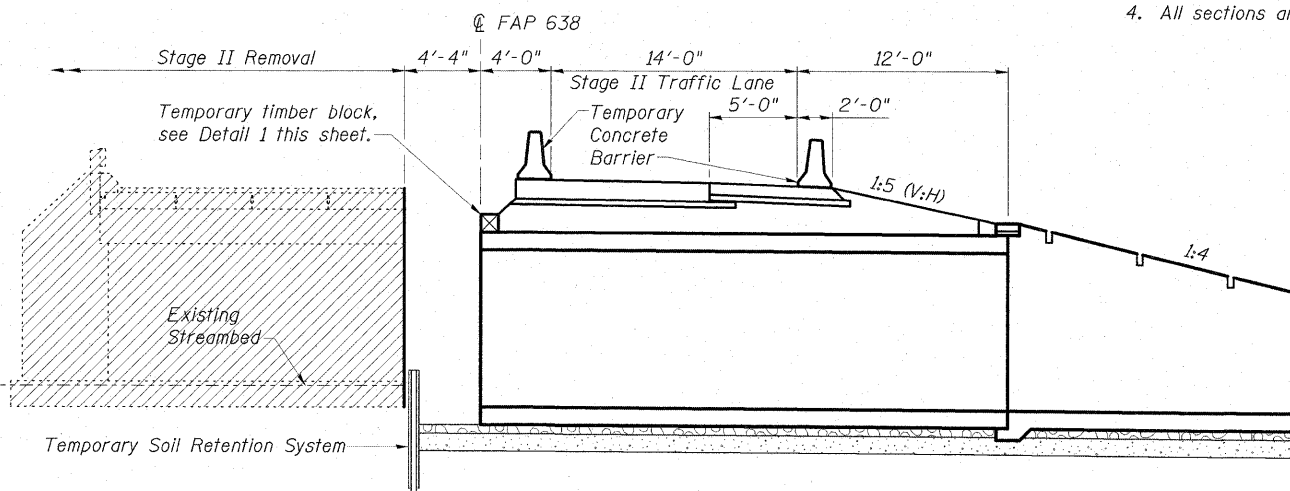
**STAGE I REMOVAL**



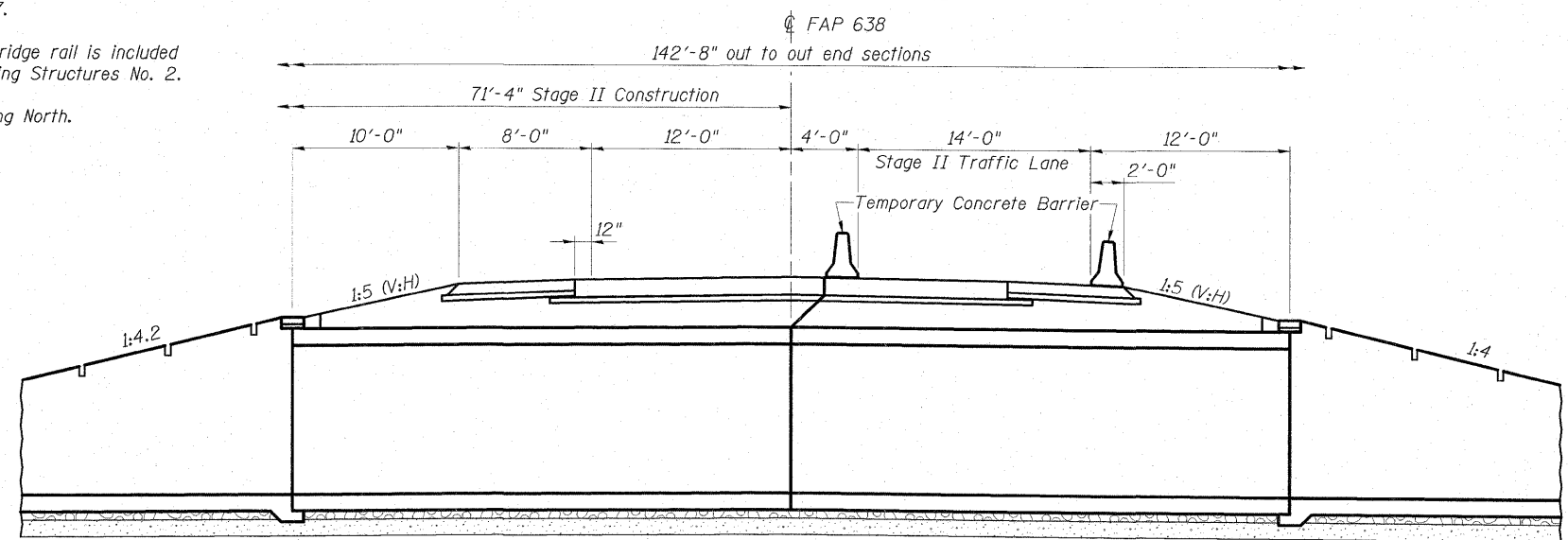
**STAGE I CONSTRUCTION**

**STAGE CONSTRUCTION NOTES**

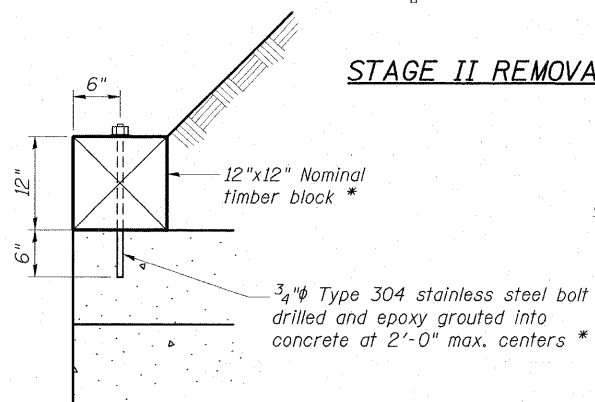
1. Hatched areas indicate Removal of Existing Structures.
2. For details of Temporary Concrete Barrier, see Sheet. No. 7 of 7.
3. Removal of existing bridge rail is included with Removal of Existing Structures No. 2.
4. All sections are looking North.



**STAGE II REMOVAL**

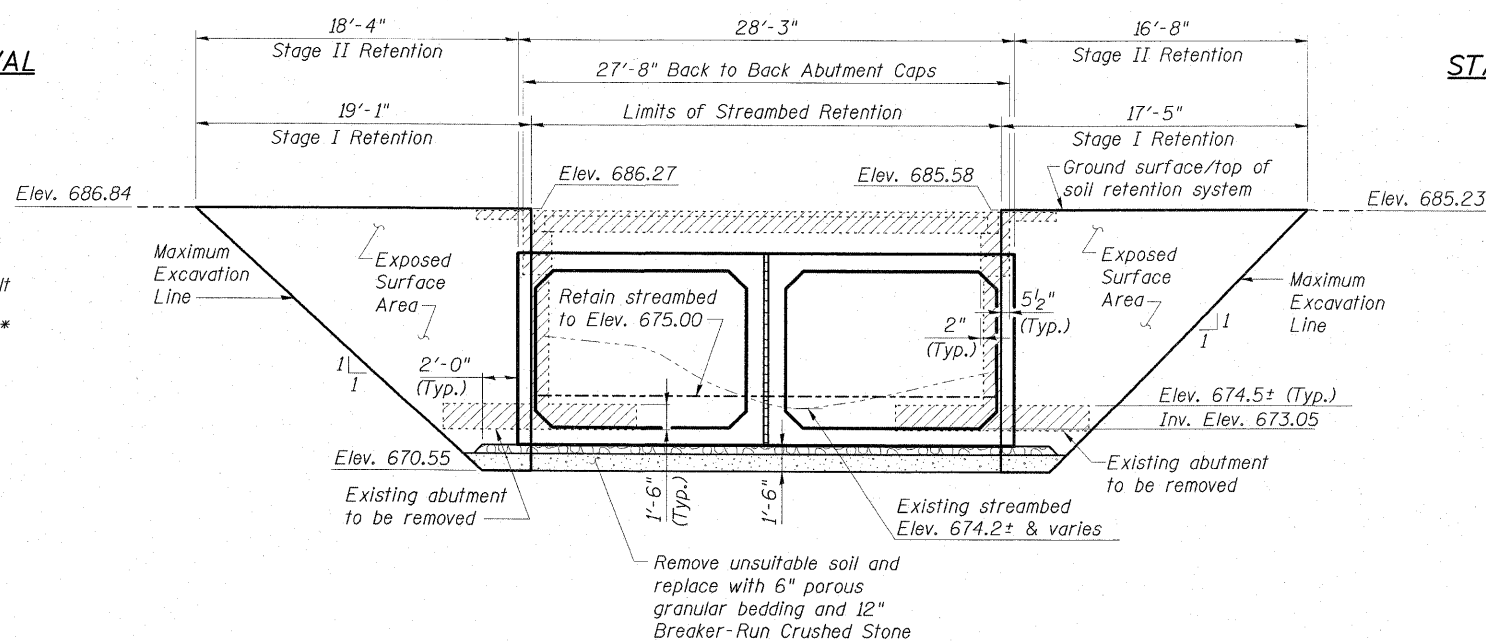


**STAGE II CONSTRUCTION**



\* Cost of installation and removal included in Precast Concrete Box Culverts.

**DETAIL 1**



**TEMPORARY SOIL RETENTION SYSTEM LIMITS**

(Looking West)

Note: Dimensions along  $\mathcal{C}$  of FAP 638

**TEMPORARY SOIL RETENTION SYSTEM NOTES**

1. Existing structure details are based on the best available information from existing bridge plans.
2. A cantilevered sheet piling design does not appear feasible and additional members or other retention systems may be necessary. The Contractor shall submit a Temporary Soil Retention System design including plan details and calculations for review and acceptance by the Engineer.
3. Adjust retention lengths as necessary for actual precast box culvert dimensions.

**STAGE CONSTRUCTION DETAILS  
STRUCTURE NO. 037-0172**

**ESCA**  
CONSULTANTS, INC.

DESIGNED BY:	DAJ	11/08
DRAWN BY:	cj	11/08
CHECKED BY:	ELH	03/09
APPROVED BY:	RDP	03/09

SHEET NO. 3 7 SHEETS	F.A.P. RTE.	SECTION	COUNTY	TOTAL SHEETS	SHEET NO.
	638	136BR-1	HENRY	67	42
CONTRACT NO. 64428					
FED. ROAD DIST. NO.		ILLINOIS	FED. AID PROJECT		